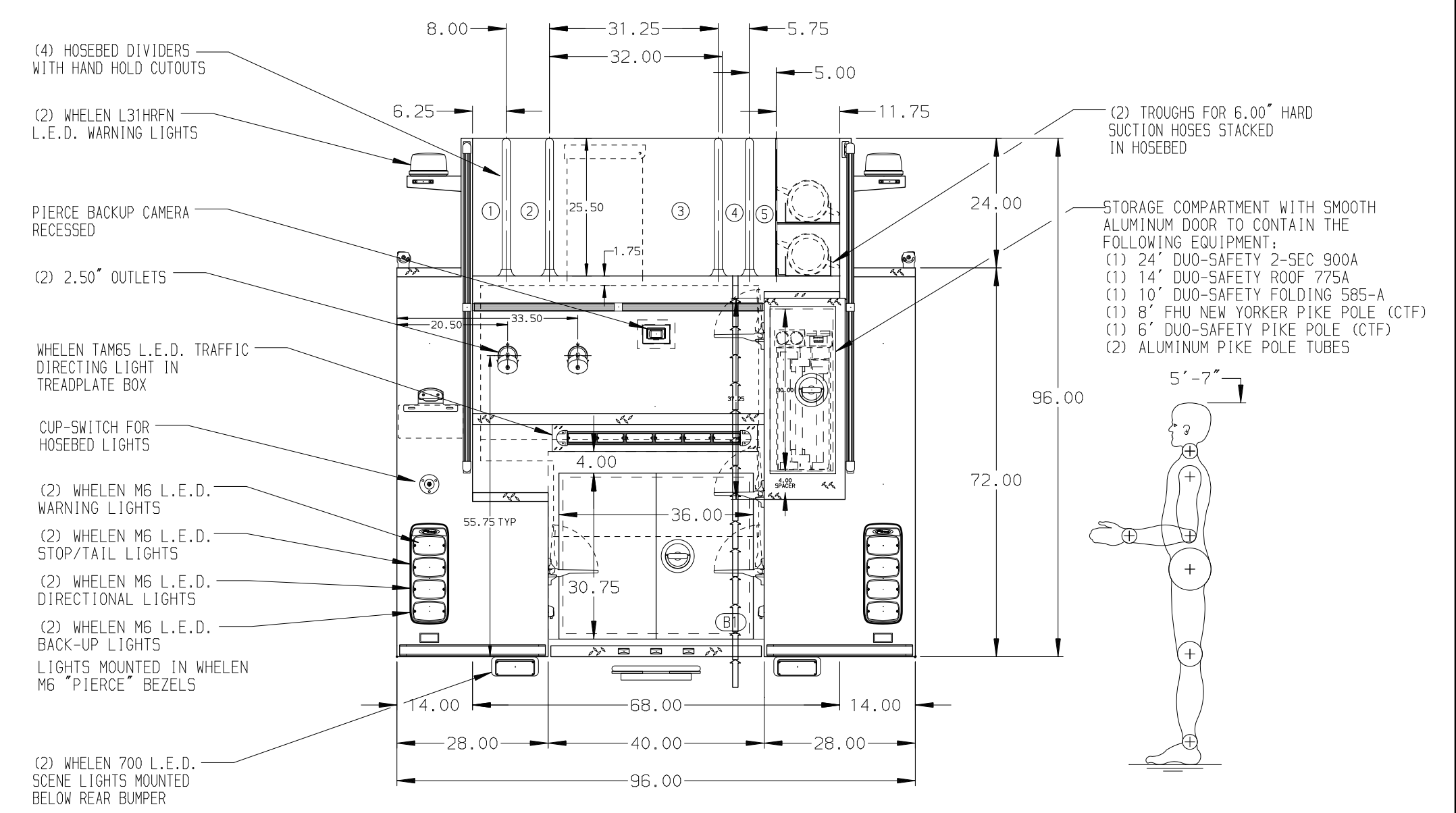


- HOSEBED CAPACITIES**
- ① 200' OF 2.50" D.J. POLY HOSE
 - ② 300' OF 3.00" D.J. POLY HOSE
 - ③ 1000' OF 4.00" D.J. POLY HOSE
 - ④ 200' OF 1.75" DEADLAY
 - ⑤ 200' OF 1.75" DEADLAY



ALUMINUM BODY

SIDE ROLL AND FRONTAL IMPACT PROTECTION

NOTE
DIMENSIONS SHOWN ARE APPROXIMATE AND ARE SUBJECT TO MINOR DEVIATIONS AS MAY OCCUR OR BE NECESSARY IN CONSTRUCTION. MINOR DETAILS NOT SHOWN.

1. BATTERY CHARGER LOCATED BEHIND DRIVER'S SEAT
2. DUAL L.E.D. LIGHT STRIPS LOCATED IN HOSE BED
3. DUAL L.E.D. LIGHT STRIPS LOCATED ON THE FRONT OF THE HOSEBED
4. REVERSED HINGED DOOR ON COMPARTMENTS L52, L53, R52 AND R53
5. ONE FULL WIDTH/DEPTH ADJUSTABLE SHELF IN COMPARTMENTS L52, L53, R52 AND R53; TWO IN L51
6. ROLL-OUT PROTECTIVE FLAP FOR BODY PANEL LOCATED L52 AND R52
7. AIR INLET WITH DISCONNECT COUPLING LOCATED IN DS PUMP PANEL
8. XANTREX PROSINE INVERTER BEHIND OFFICER'S SEAT
9. CIRCUIT BREAKER PANEL WITH INVERTER IN COMPARTMENT L53
10. ONE 120V DUPLEX RECEPTACLE IN COMPARTMENT L52, R52, R53 AND EMS

REV	DATE	BY	CH	ARROW	XT
▽	23JUN20	SHD	DTS		
▽	17JUN20	SHD	DTS		
▽	12MAY20	LME	DTS		
▽	17MAR20	LME	CDU		

		JOB NO.	34996
		SCALE	1:24
TITLE 2000-D-1000P, 152" BODY, FDLER, (4) CROSSSLAYS DELUGE, LADDERS THRU BODY	FOR GROVE CITY VOLUNTEER FIRE DEPARTMENT GROVE CITY, PENNSYLVANIA	DRAWN BY	LME
		CHECKED BY	CDU
DWG NO. 34996AD	REV	SHEET SIZE	D
		SHEET NO.	1 OF 1