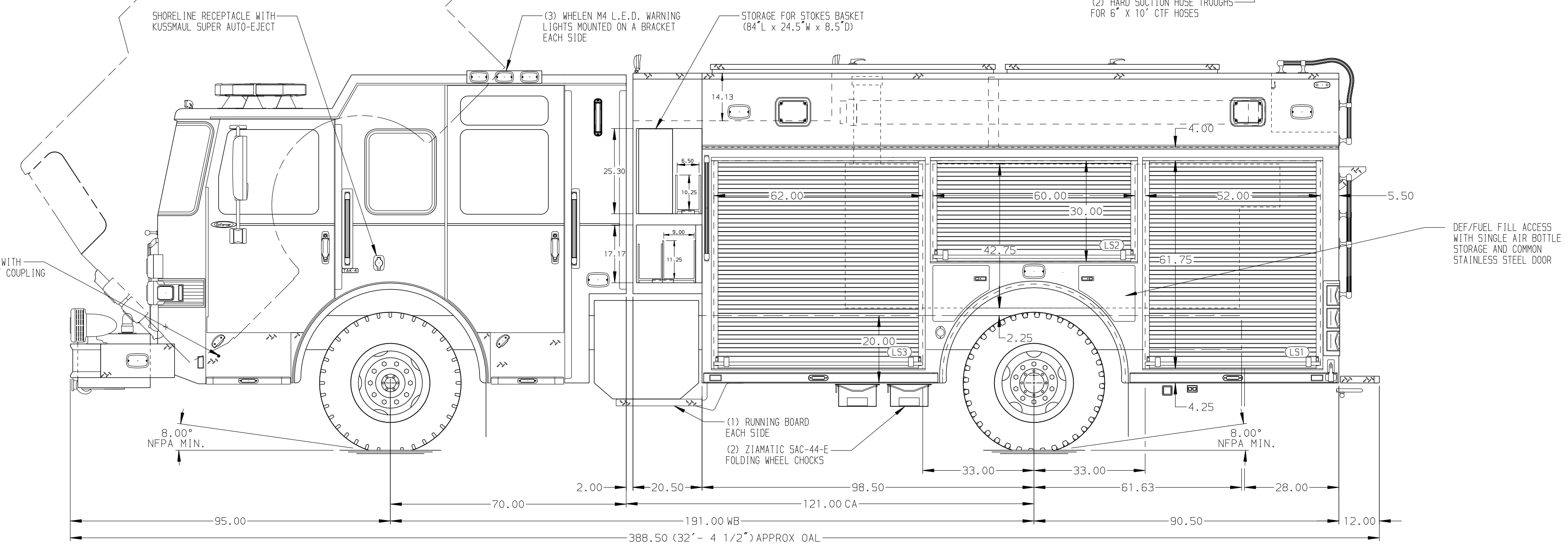
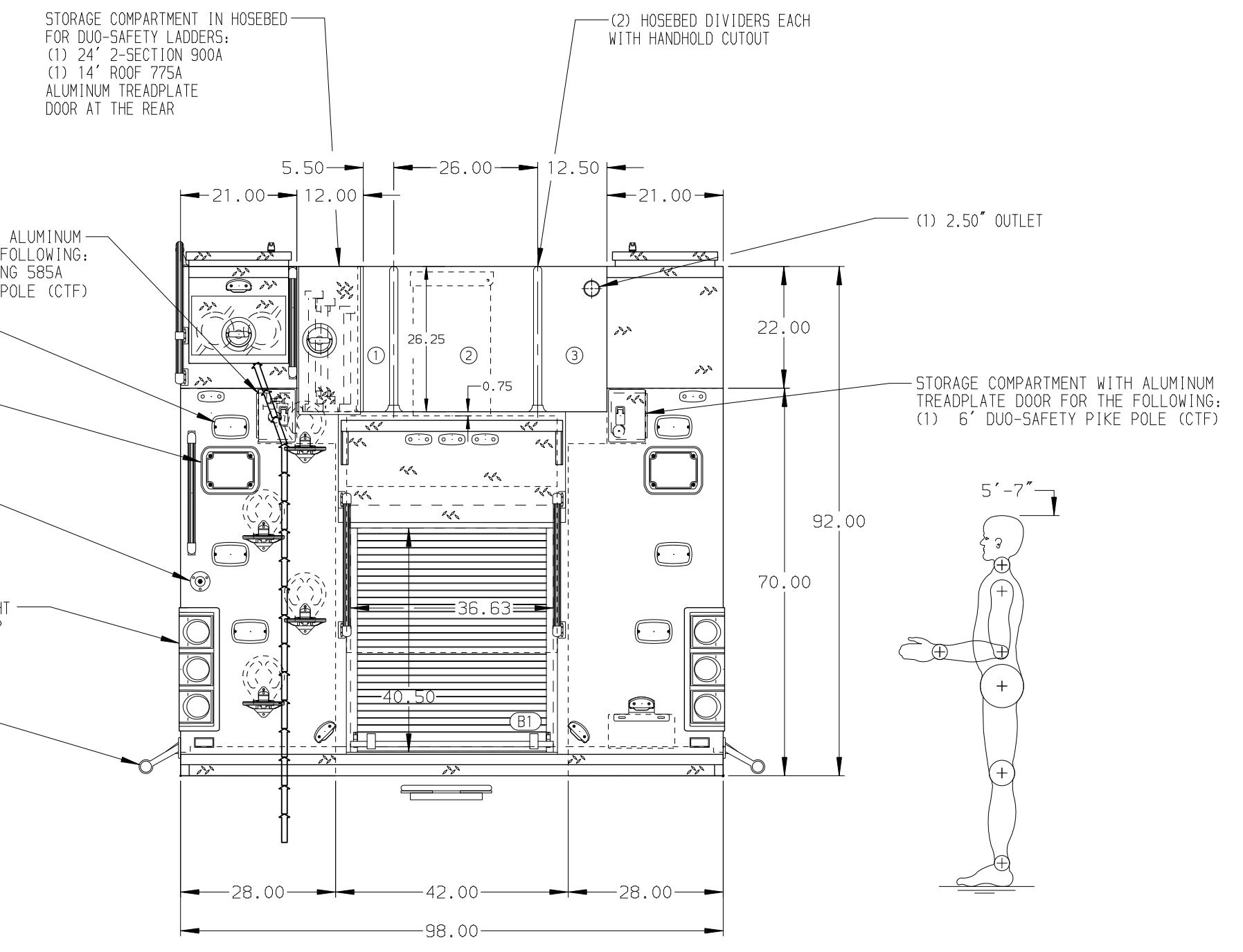


- HOSEBED CAPACITIES
- ① 200' OF 2.50" D.J. POLY HOSE
  - ② 1000' OF 5.00" D.J. POLY HOSE
  - ③ 500' OF 3.00" D.J. POLY HOSE



ALUMINUM BODY

NOTE  
DIMENSIONS SHOWN ARE APPROXIMATE AND ARE SUBJECT TO MINOR DEVIATIONS AS MAY OCCUR OR BE NECESSARY IN CONSTRUCTION. MINOR DETAILS NOT SHOWN.

1. ONE 9000# WARN PORTABLE RECEIVER TYPE WINCH
2. BATTERY CHARGER LOCATED BEHIND DRIVER'S SEAT
3. BATTERY CHARGE INDICATOR LOCATED ON DRIVER'S SEAT RISER
4. DUAL L.E.D. LIGHT STRIPS LOCATED IN HOSE BED
5. ONE FULL WIDTH/DEPTH ADJUSTABLE SHELF IN COMPARTMENTS RS2 AND RS3; TWO IN LS1, LS3, RS1 AND B1
6. ONE ADJUSTABLE SLIDE-OUT TRAY IN COMPARTMENT LS3
7. ONE SWING-OUT ALUMINUM TOOL BOARD IN COMPARTMENT LS2
8. ONE VERTICAL PARTITION IN COMPARTMENT RS1
9. VERTICAL PARTITION MOUNTED ON TRAYS IN COMPARTMENT LS3
10. STORAGE RACK FOR (3) AIR BAGS LOCATED IN COMPARTMENT RS3

11. HOSE STORAGE RACK WITH ADJUSTABLE DIVIDERS FOR ROLLED HOSE IN COMPARTMENT LS3
12. PERMANENTLY MOUNTED SHELF WITH INVERTED LIP IN COMPARTMENT RS3
13. ALL FOLDING STEPS TO BE TRIDENT WITH INTEGRATED L.E.D. LIGHT UNLESS SPECIFIED
14. CIRCUIT BREAKER PANEL IN COMPARTMENT LS3
15. MOUNTING PROVISIONS FOR FUTURE HYDRAULIC REEL INSTALLATION LOCATED IN RH2
16. MOUNTING PROVISIONS FOR CTF CORD REEL IN RH2
17. 120V NEMA DUXLEY RECEPTACLE IN THE CAB
18. 240V WATERPROOF RECEPTACLE IN COMPARTMENT RS3
19. ONE SLIDE-OUT ALUMINUM TOOL BOARD IN COMPARTMENT RS1
20. SLIDE-OUT TOOLBOARD WITH PEGBOARD PATTERN AND PAINTED FINISH IN COMPARTMENT

21. PARTITION BETWEEN COMPARTMENTS RS1/B1

REV	DATE	BY	CH	ENFORCER
▽	30JUN20	JCO	DTS	MAKE
▽	26MAY20	JRO	DTS	PIERCE
▽	27MAR20	CDU	NPE	MODEL

		JOB NO.	34993
		SCALE	DATE
TITLE	1500-D-750P, 189" PUC BODY, FH AND DEPTH FRT AND RR (3) CROSSLAYS, GENERATOR, LADDERS IN HOSE BED	DRAWN BY	LME 24MAR20
FOR	COLUMBIA FIRE COMPANY OSCEOLA MILLS, PENNSYLVANIA	CHECKED BY	CDU 24MAR20
DWG NO.	34993AD	SHEET SIZE	SHEET NO.
		D	1 OF 1