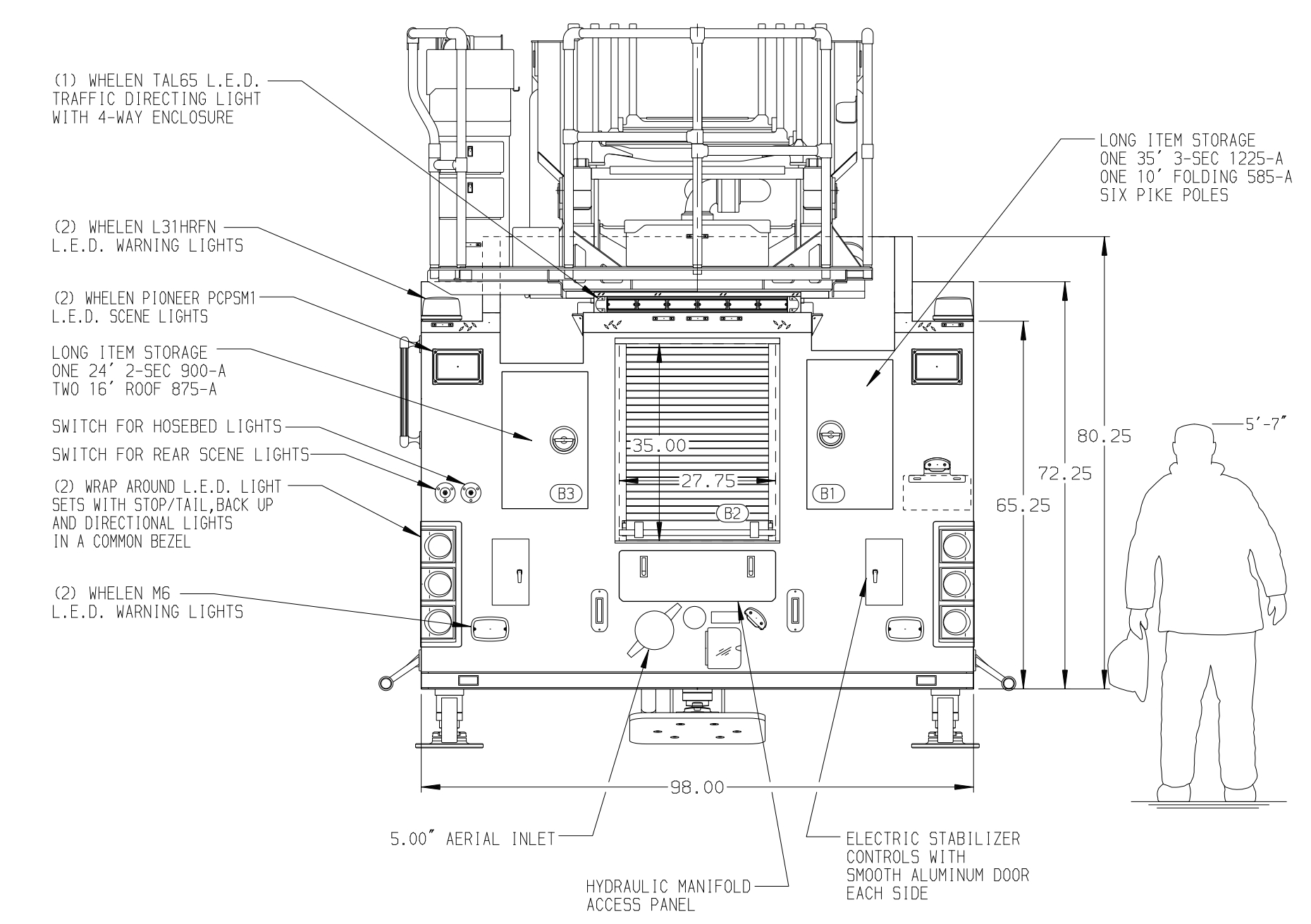
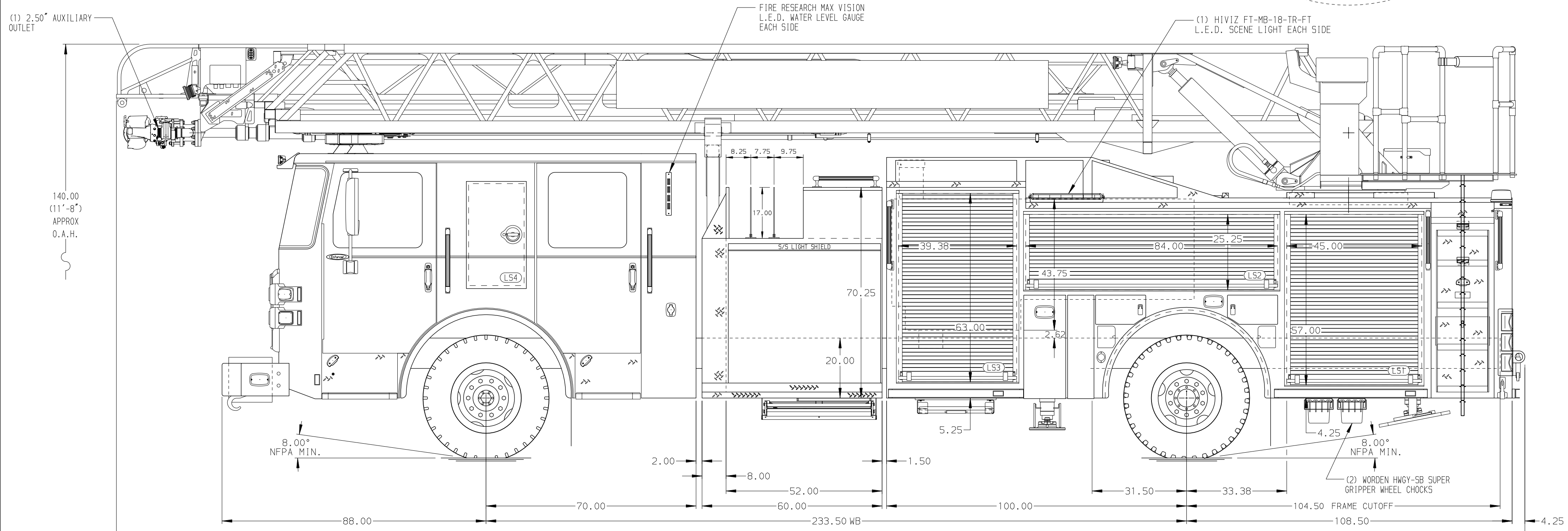


BODY 107' ASL Aluminum Body COMPT, LEFT SIDE FRONT Full Height RollUp Forward COMPT, LEFT SIDE REAR Full Height RollUp Rearward COMPT, RIGHT SIDE FRONT Full Height RollUp Forward COMPT, RIGHT SIDE REAR Full Height RollUp Rearward	WATER TANK 475 Gallon Poly Water Tank Foam System Foam System, External Foam Cell 25 Gallon Foam Cell, Reduced Water
---	--



CHASSIS Enforcer Chassis	CAB 7000 Enforcer Cab	AXLE, FRONT, CUSTOM 23,000 Lb Dana Axle	TRANSMISSION Allison 5th Gen, 3000 EVS P	PUMPHOUSE 52\" Control Zone Side Mount	CROSSLAYS, 1.50\" (2) 1.50\" Standard Capacity	SPEEDLAYS Speedlays Not Required
ENGINE 400 HP Cummins L9 Engine	BUMPER 19\" Extended Painted, Reinforced, Steel	AXLE, REAR 33,500 Lb Meritor Axle		PUMP 2000 GPM Waterous CSU	CROSSLAYS, 2.50\" (1) 2.50\" Standard Capacity	GENERATOR Generator Not Required

NOTE
DIMENSIONS SHOWN ARE APPROXIMATE AND ARE SUBJECT TO MINOR DEVIATIONS AS MAY OCCUR OR BE NECESSARY IN CONSTRUCTION. MINOR DETAILS NOT SHOWN.

- ONE 1.50\" OUTLET WITH 2.00\" PIPING AND SWIVEL LOCATED IN CENTER BUMPER TRAY
- SHORELINE RECEPTACLE WITH KUSSMAUL SUPER AUTO-EJECT LOCATED BEHIND THE DRIVER'S SIDE CREW CAB DOOR
- AIR INLET WITH DISCONNECT COUPLING IN THE DRIVER SIDE STEPWELL
- BATTERY CHARGER LOCATED IN COMPARTMENT PER SHOP ORDER
- BATTERY CHARGE INDICATOR LOCATED ON THE DRIVER SIDE SEAT RISER
- DUAL L.E.D. LIGHT STRIPS LOCATED IN HOSE BED
- FOUR ADJUSTABLE SHELVES IN COMPARTMENTS PER SHOP ORDER
- THREE FLOOR MOUNTED SLIDE-OUT TRAYS IN COMPARTMENTS PER SHOP ORDER
- ONE SWING-OUT ALUMINUM TOOL BOARD IN COMPARTMENT PER SHOP ORDER
- ONE VERTICAL PARTITION IN COMPARTMENT PER SHOP ORDER
- LIFTING EYE ROPE RESCUE ATTACHMENT AT AERIAL TIP
- NON-RAISED AERIAL PEDESTAL
- 1500 GPM HIGH FLOW WATERWAY
- NO LIMITED RETRACTION REQUIRED

		JOB NO.	34989
		SCALE	1:24
107' ASCENDANT AERIAL LADDER AND BODY ASSEMBLY		DRAWN BY	TKA
		CHECKED BY	CRI
FOR RICHMOND HILL FD RICHMOND HILL, GEORGIA		SHEET SIZE	SHEET NO.
		DWG NO.	34989AD

REV	DATE	BY	CH	ENFORCER
08JUN20	TKA	PPE		
07APR20	TKA	PPE		