

**PUMPER BODY**  
Medium Aluminum 2nd Gen Pumper

**CHASSIS**  
Saber FR Chassis

**CHASSIS AXLE, FRONT, CUSTOM**  
18,000 Lb Dana Axle

**AXLE, REAR**  
27,000 Lb Dana Axle

**ENGINE**  
450 HP Cummins L9 Engine

**TRANSMISSION**  
Allison 5th Gen, 3000 EVS P

**BUMPER**  
26" Extended Painted Steel

**CAB**  
7010 Saber FR Cab

**BODY WATER TANK**  
1000 Gallon Poly Water Tank

**COMPT, PUMPER, REAR**  
51.25" FF RollUp Rear Compt

**COMPT, PUMPER, LEFT SIDE**  
152" RollUp Full Height Front & Rear FDLR

**COMPT, PUMPER, RIGHT SIDE**  
152" RollUp Full Height Front & Rear FDLR

**FIRE SUPPRESSION PUMPHOUSE**  
42" Control Zone Side Mount

**PUMP**  
1500 GPM Waterous CX C20

**CROSSLAYS, 1.50"**  
(2) 1.50" Standard Capacity

**CROSSLAYS, 2.50"**  
CrossLays Not Required

**SPEEDLAYS**  
SpeedLays Not Required

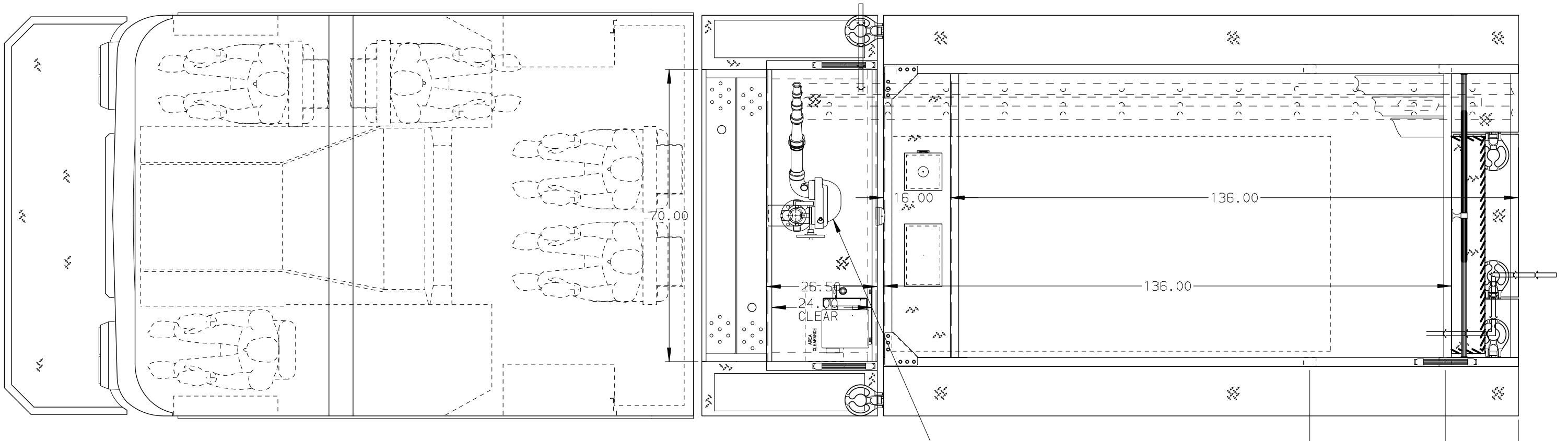
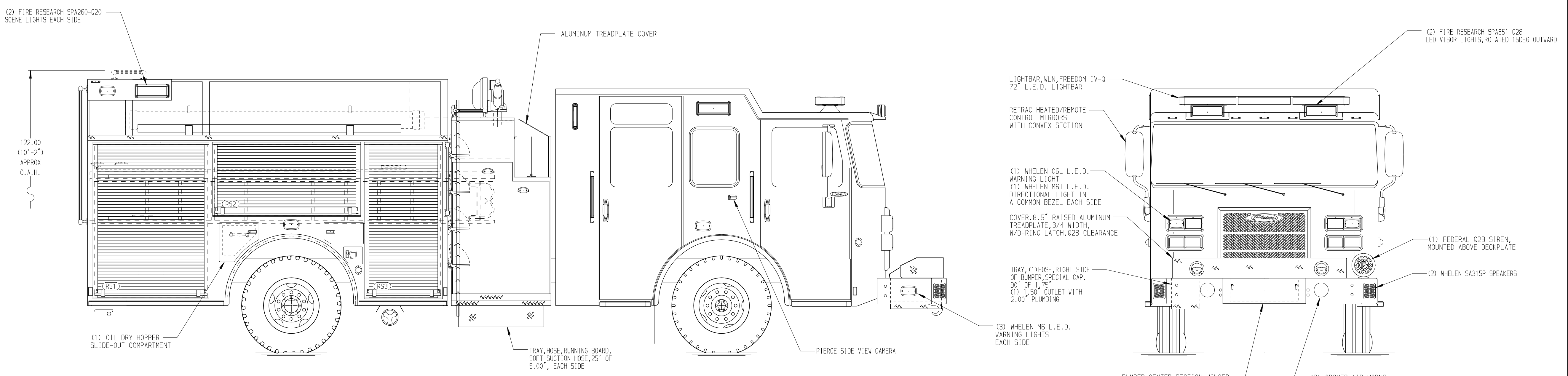
**GENERATOR**  
Generator Not Required

**Foam System**  
Husky 3 Single Agent Foam System

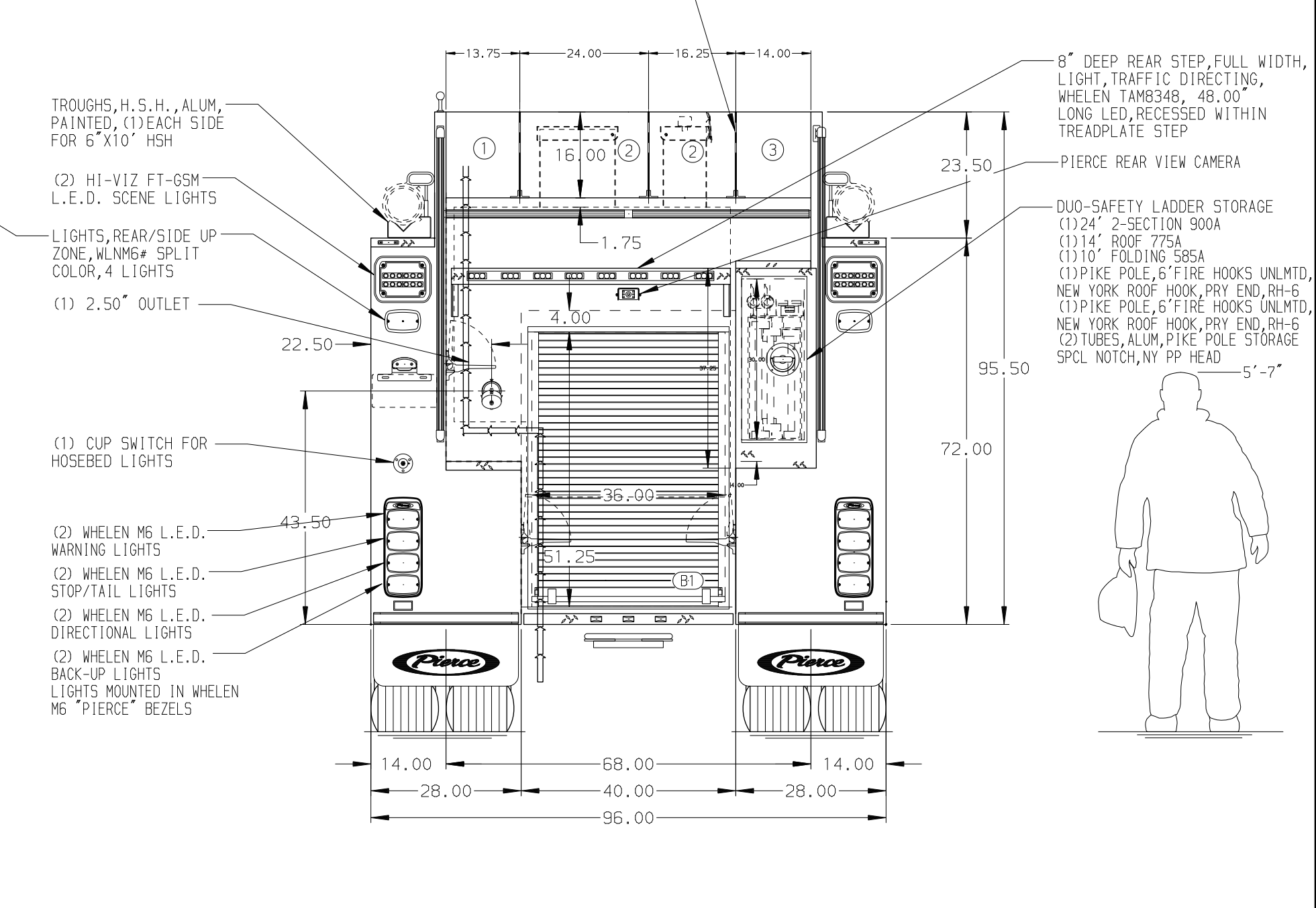
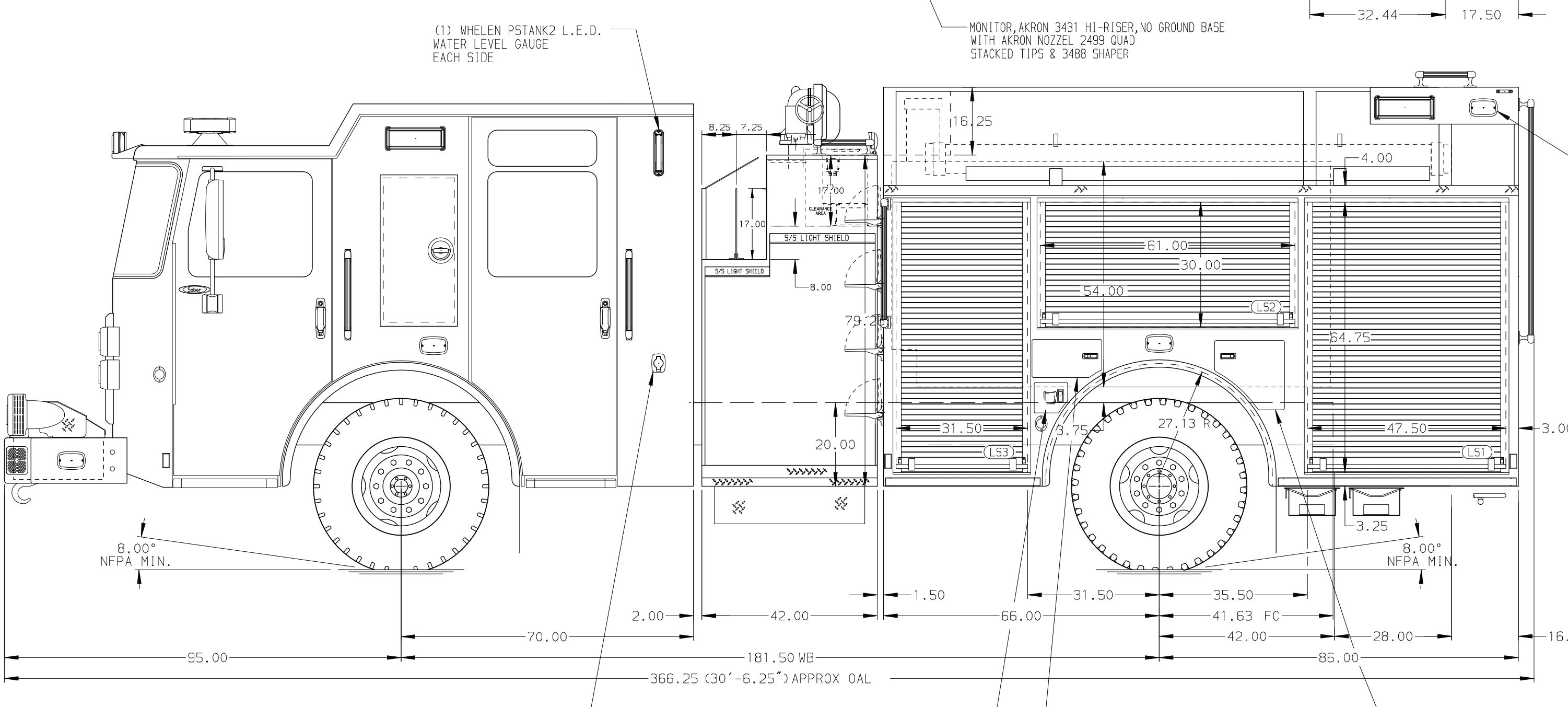
**Foam Cell**  
25 Gallon Foam Cell, Not Reduced Water

Side Roll and Frontal Impact Protection

**NOTE**  
DIMENSIONS SHOWN ARE APPROXIMATE AND ARE SUBJECT TO MINOR DEVIATIONS AS MAY OCCUR OR BE NECESSARY IN CONSTRUCTION. MINOR DETAILS NOT SHOWN.



HOSEBED CAPACITY	
<b>BED 1</b>	500' OF 2.50" D.J. POLY HOSE
<b>BED 2</b>	1000' OF 5.00" D.J. POLY HOSE
<b>BED 3</b>	500' OF 2.50" D.J. POLY HOSE



<b>Pierce MANUFACTURING INC.</b>		JOB NO.	34980
		SCALE	DATE
		1:24	
TITLE		Pierce Pumper Approval Drawing	
MAKE			
FOR		Brazoria County ESD 3	
DRAWN BY		MMF	03FEB20
CHECKED BY		NPE	06FEB20
SHEET SIZE			SHEET NO.
D			1 OF 1

REV	DATE	BY	CH	SABER FR
15APR20	RHU	DDR		
09MAR20	CRH	DDR		

34980AD