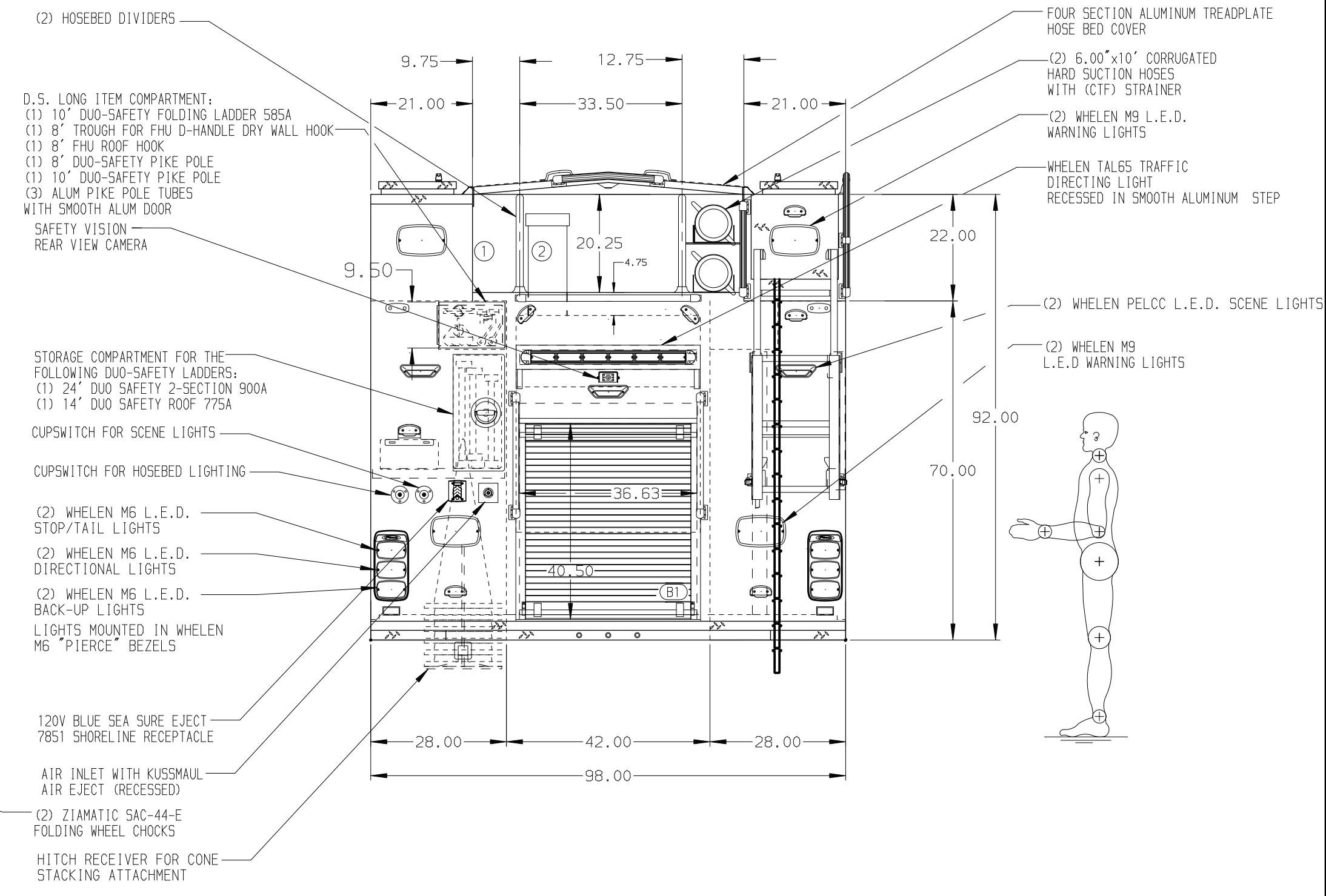
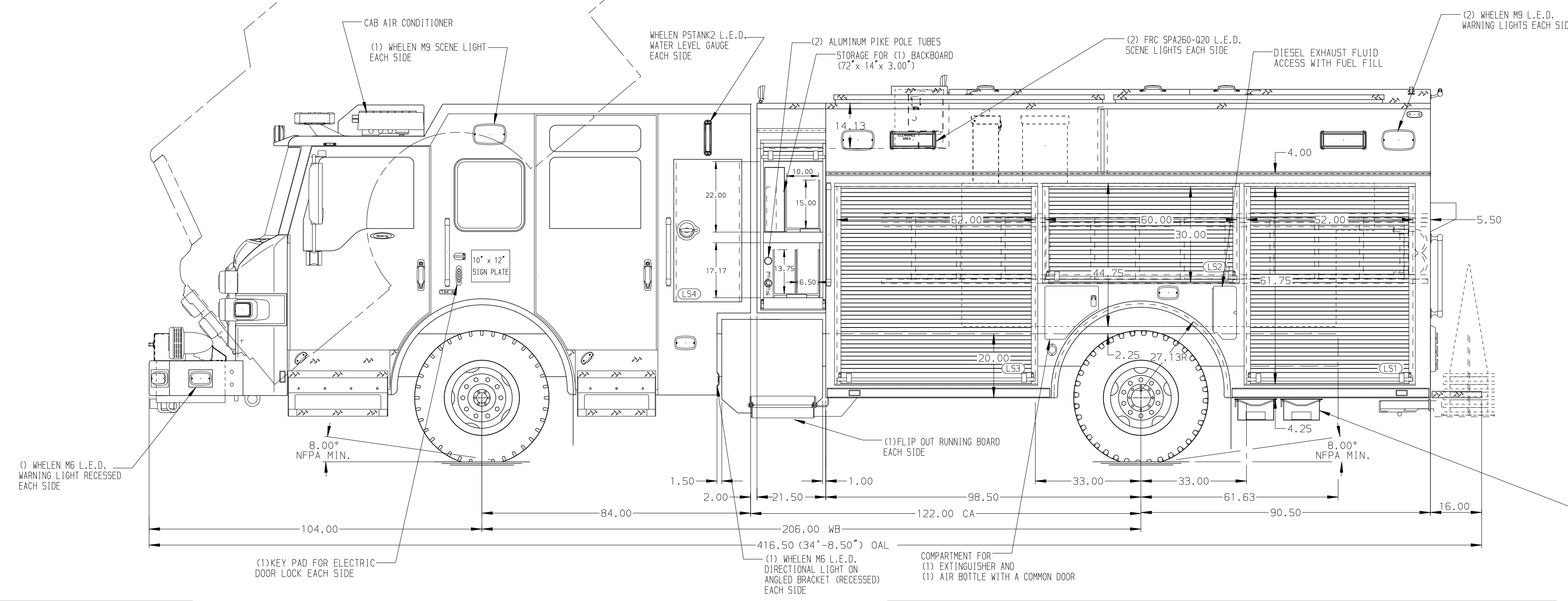


SURFACE DESIGNATION AND PATHWAY MARKINGS  
HITCH RECEIVER WITH POWER FOR PORTABLE WINCH

HOSEBED CAPACITIES  
① 400' OF 2.50\"/>



ALUMINUM BODY

SIDE ROLL AND FRONTAL IMPACT PROTECTION

**NOTE**  
DIMENSIONS SHOWN ARE APPROXIMATE AND ARE SUBJECT TO MINOR DEVIATIONS AS MAY OCCUR OR BE NECESSARY IN CONSTRUCTION. MINOR DETAILS NOT SHOWN.

- BATTERY CHARGER LOCATED IN COMPARTMENT LS3 MOUNTED TO CEILING
- BATTERY CHARGER INDICATOR LOCATED NEAR D.S. SEAT RISER WITH BRACKET
- DUAL L.E.D. LIGHT STRIPS LOCATED IN HOSE BED
- TWO FULL WIDTH/DEPTH ADJUSTABLE SHELVES IN RS3
- ONE 750LB FLOOR MOUNTED SLIDE-OUT TRAY IN LS1
- ONE ADJUSTABLE SLIDE-OUT TRAY IN B1
- ONE ADJUSTABLE TILTY SLIDE-OUT MAX WIDTH/DEPTH TRAY IN RS2
- TWO SLIDE-OUT ALUMINUM TOOLBOARDS WITH PEGBOARD IN RS3
- ONE 500LB FLOOR MOUNTED TOOLBOARDS WITH PEGBOARD IN RS3 AND B1
- ONE TOOLBOARD WITH PEG BOARD ADDED TO SLIDE-OUT TRAY IN COMPARTMENT RS1

- ONE SWING-OUT ALUMINUM TOOLBOARDS IN LS1 AND LS2
- PARTITION BETWEEN COMPARTMENTS LS1/B1 AND RS1/B1
- PAC TRAC INSTALLED IN LS3
- AIR OUTLET WITH SHUT OFF VALVE ON D.S. LOWER PUMP PANEL IN LS3
- VERTICAL PARTITION IN COMPARTMENT RS3
- AIR BAG RACK FOR 2 AIR BAGS IN RS3
- ONE HORIZONTAL PARTITION IN LS3
- PULL STRAP FOR EACH CROSSLAY DOOR
- ONE DRAWER CTECH CABINET IN COMPARTMENT LS3
- PEGBOARD ON SIDE WALLS OF COMPARTMENT RS1

21. PEGBOARD W/TRACK ON BACK WALL OF COMPARTMENT LS2 AND RS1

REV	DATE	BY	CH	VELOCITY
1	19AUG20	LME	JJR	MAKE
2	26JUN20	JCO	JJR	PIERCE
3	21MAY20	LME	JJR	MODEL

		JOB NO.	34951	
		SCALE	DATE	
TITLE	1500-D-775P 750 GAL OF WATER W/ 25 GAL FOAM CELL 189\"/>			
FOR	DEERFIELD BEACH DEERFIELD BEACH, FLORIDA	DRAWN BY	LME	23MAR20
		CHECKED BY	JJR	24MAR20
DWG NO.	34951AD	SHEET SIZE	D	SHEET NO. 1 OF 1