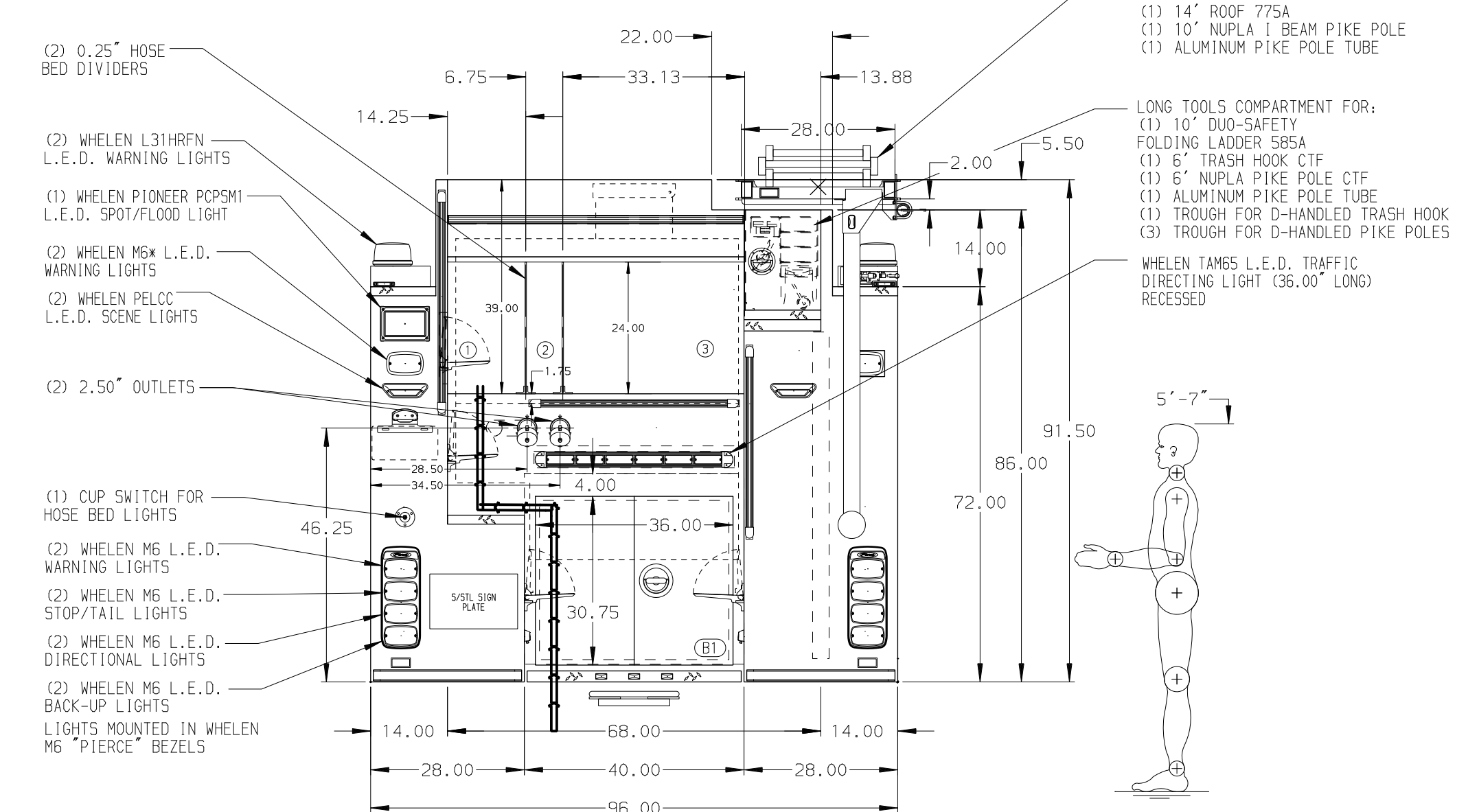
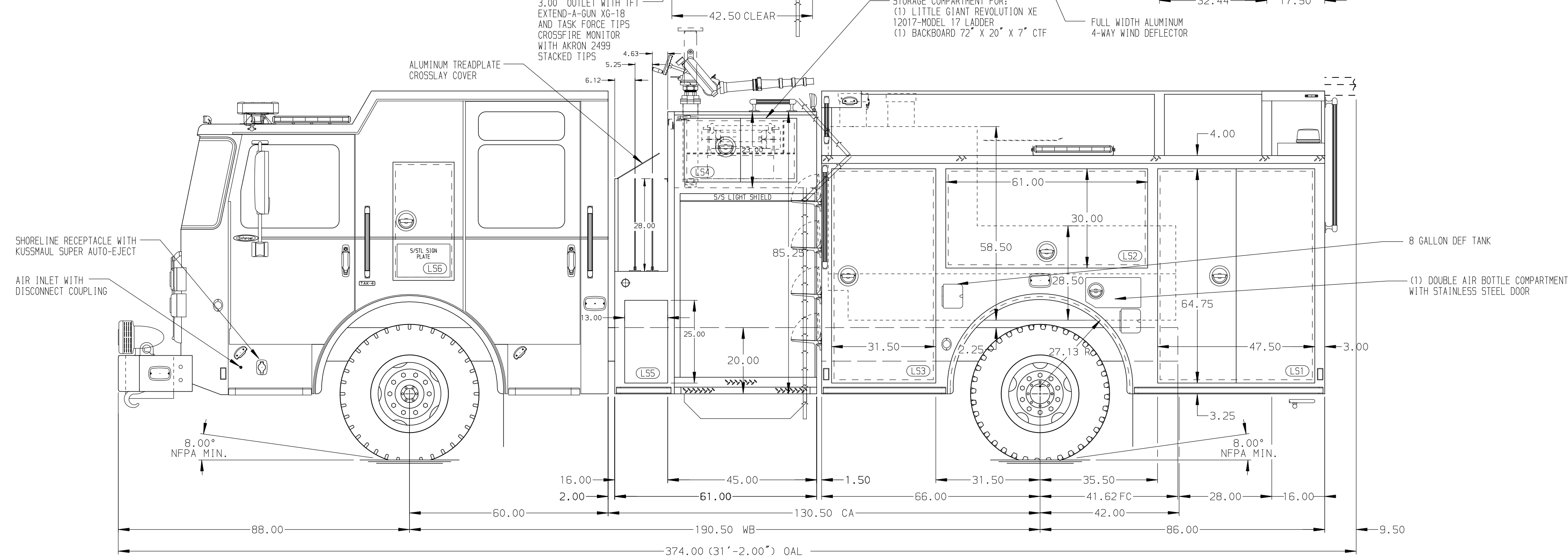
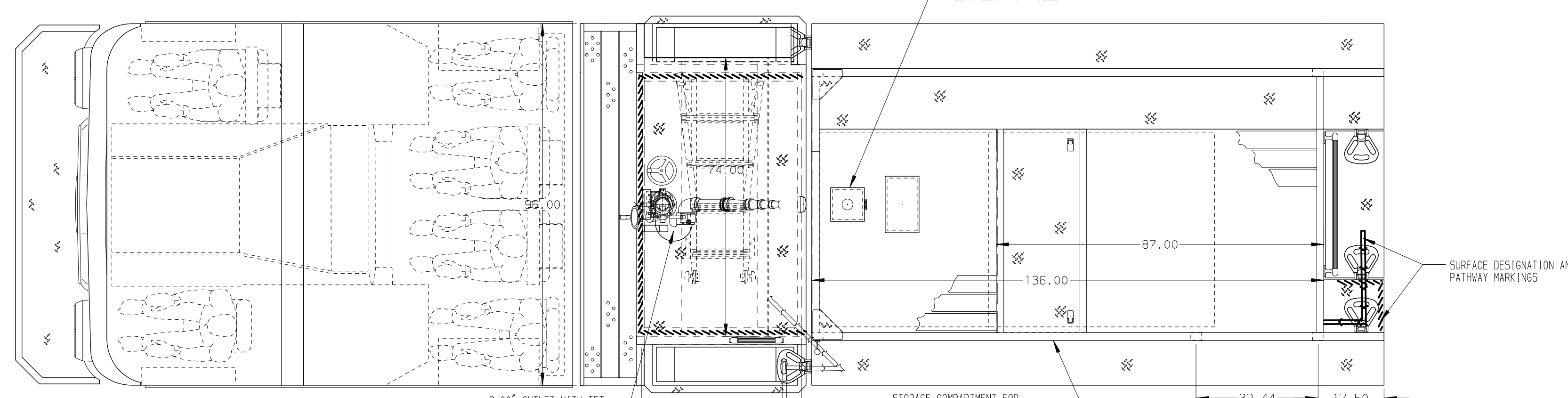


HOSEBED CAPACITIES

- 600' OF 2.50" D.J. POLY HOSE
- 200' OF 3.00" D.J. POLY HOSE
- 850' OF 5.00" D.J. POLY HOSE



ALUMINUM BODY

**NOTE**  
DIMENSIONS SHOWN ARE APPROXIMATE AND ARE SUBJECT TO MINOR DEVIATIONS AS MAY OCCUR OR BE NECESSARY IN CONSTRUCTION. MINOR DETAILS NOT SHOWN.

- BATTERY CHARGER LOCATED BEHIND THE DRIVER SEAT
- BATTERY CHARGE INDICATOR LOCATED ON DRIVER'S SEAT RISER
- DUAL L.E.D. LIGHT STRIPS LOCATED IN HOSE BED
- STAINLESS STEEL SCUFFPLATE ON BODY REAR CORNERS
- REVERSED HINGED DOOR ON COMPARTMENTS L53 AND R53
- ELEVEN FULL WIDTH/DEPTH ADJUSTABLE SHELF IN COMPARTMENT L51, TWO IN L53, THREE IN R53, & 5 IN R51
- ONE ADJUSTABLE SLIDE-OUT TRAY IN COMPARTMENT L53
- ONE FLOOR MOUNTED SLIDE-OUT TRAY WITH SIDE SLIDES IN COMPARTMENTS L51, R52, & R5
- ONE SKING-OUT ALUMINUM TOOL BOARD IN COMPARTMENT L52
- ONE SLIDE-OUT ALUMINUM TOOL BOARD IN COMPARTMENT R51
- ONE VERTICAL PARTITION IN COMPARTMENTS R51 & R52
- STORAGE RACK FOR (3) AIR BOTTLES LOCATED IN COMPARTMENT L53
- ONE FIXED SHELF IN COMPARTMENT L53
- ONE TILTING/SLIDE-OUT TRAY IN COMPARTMENT R52
- ONE ADJUSTABLE SLIDE-OUT TRAY IN COMPARTMENT L53
- ONE FLOOR MOUNTED SLIDE-OUT TRAY IN COMPARTMENT R52
- 120V DUPLEX RECEPTACLE LOCATED (TBD)
- CTF CHUCK MOUNTING BRACKETS
- FOAM PRO 2002 FOAM SYSTEM

REV	DATE	BY	CH	ENFORCER
20AUG20	BKB	GKH		CHASSIS DATA
16JUL20	BKB	GKH		MAKE
16JUN20	COL	GKH		PIERCE
12JUN20	COL	GKH		MODEL
10APR20	LME	EGO		

		JOB NO.	34950
		SCALE	DATE
TITLE	1500-D-750P, 725G WATER W/25G FOAM CELL, 152" BODY (2) CROSSLAYS, (1) DEADLAY, DELUGE, HLR	DRAWN BY	LME
FOR	CLARK FIRE AND RESCUE RIDGEFIELD, WASHINGTON	CHECKED BY	EGO
DWG NO.	34950AD	SHEET SIZE	SHEET NO.
		D	1 OF 1