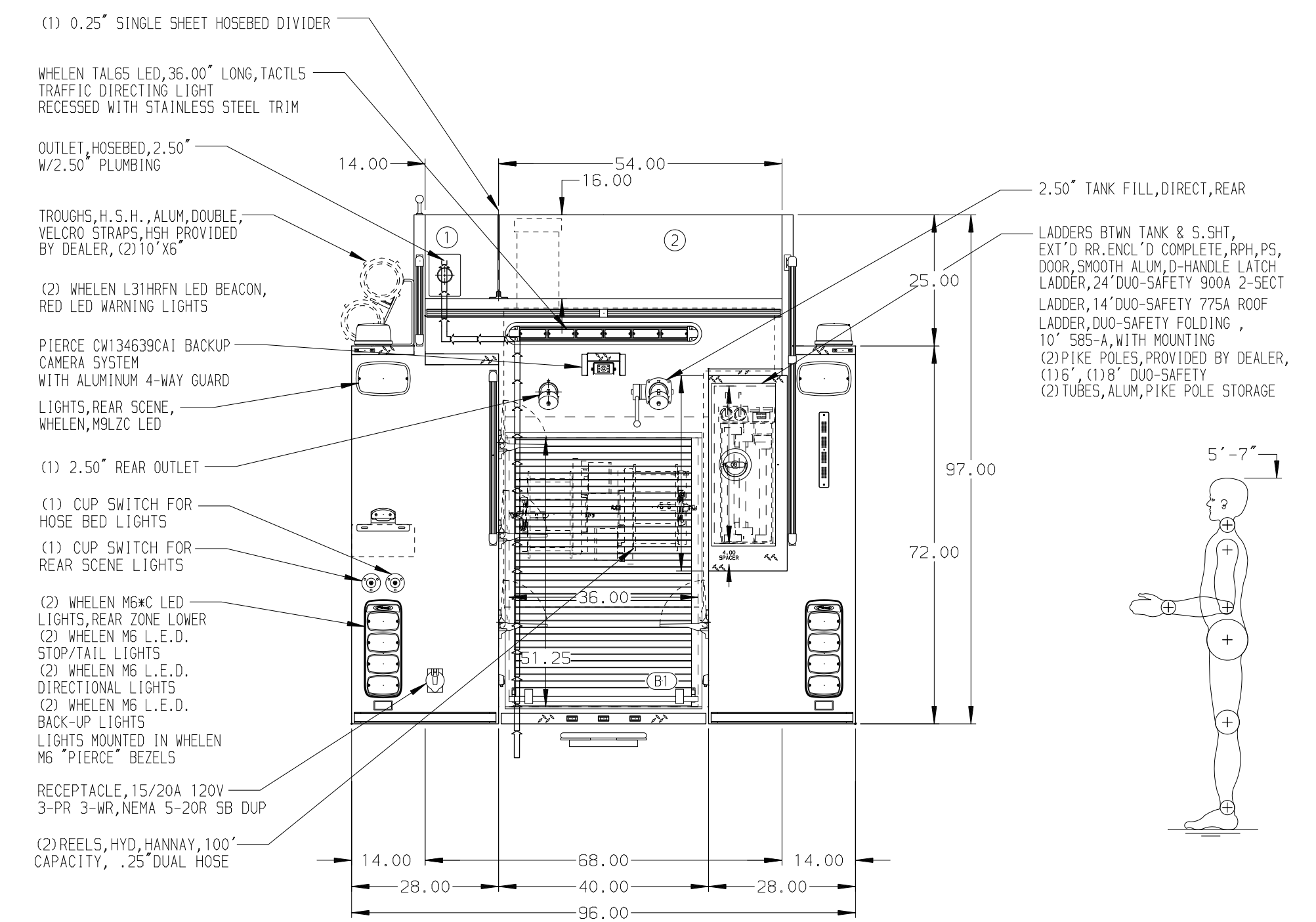
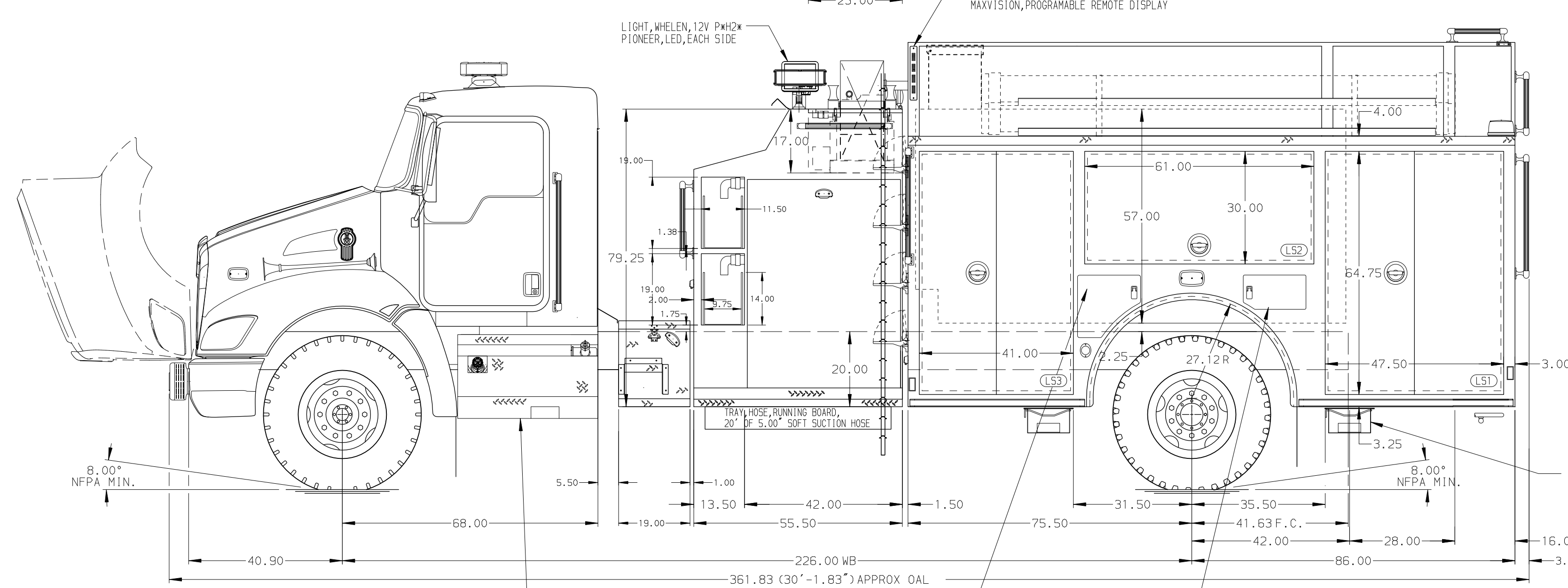


HOSEBED CAPACITIES

① 400' OF 2.50" D.J. POLY HOSE

② 1000' OF 5.00" D.J. POLY HOSE



NOTE
DIMENSIONS SHOWN ARE APPROXIMATE AND ARE SUBJECT TO MINOR DEVIATIONS AS MAY OCCUR OR BE NECESSARY IN CONSTRUCTION. MINOR DETAILS NOT SHOWN.

REV	DATE	BY	CH	T370
13OCT20	RHU	NAS	MAKE	
10SEP20	RHU	NAS	KENWORTH	
09JUL20	RWI	CRH	MODEL	

		JOB NO.	34947
		SCALE	1:24
TITLE 1250-D-1000P, 161" BODY, LS FULL HGHT&DPTH, RS FULL HGHT, FDLER, 42" TOP MOUNT, (2) 1.5" SPEEDLAYS		DATE	
		FOR	COFFEE COUNTY FIRE DEPARTMENT DOUGLAS, GEORGIA
DWG NO. 34947AD		CHECKED BY	RWI
		SHEET NO.	1 OF 1