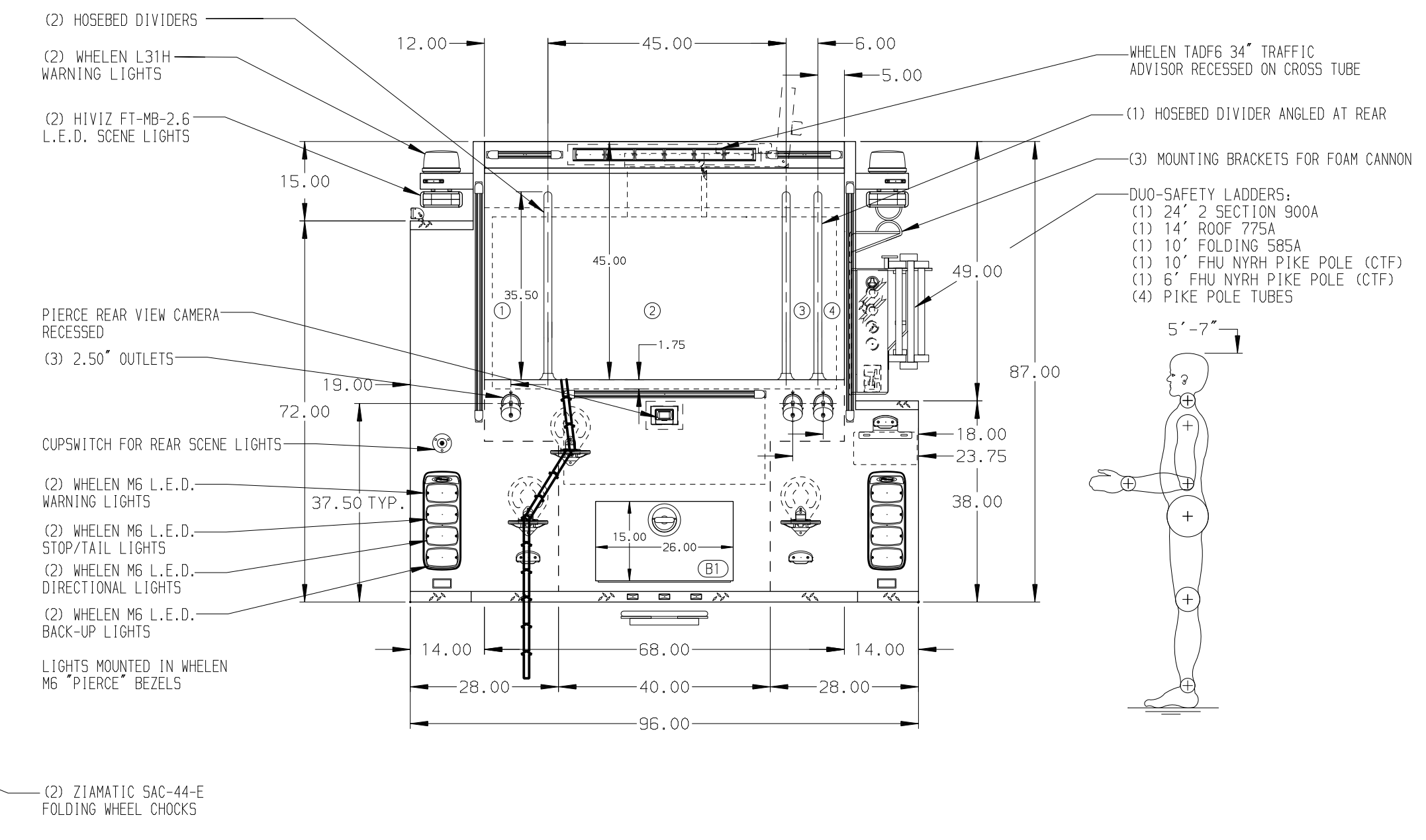


- HOSEBED CAPACITIES
- ① 300' OF 3.00\"/>



ALUMINUM BODY MAXIMUM O.A.H. 112.00" MAXIMUM O.A.L. 373.50 SIDE ROLL AND FRONTAL IMPACT PROTECTION

NOTE
DIMENSIONS SHOWN ARE APPROXIMATE AND ARE SUBJECT TO MINOR DEVIATIONS AS MAY OCCUR OR BE NECESSARY IN CONSTRUCTION. MINOR DETAILS NOT SHOWN.

1. ONSPOT AUTOMATIC TIRE CHAINS TO BE PROVIDED AT THE REAR
2. KUSSMAUL BATTERY CHARGER BEHIND THE DRIVER'S SEAT
3. BATTERY CHARGER INDICATOR LOCATED ON DRIVER'S SEAT RISER
4. DUAL L.E.D. LIGHT STRIPS LOCATED IN HOSE BED
5. REVERSED HINGED DOOR ON L53
6. ONE 120V NEMA DUPLEX RECEPTACLE ON THE ENGINE TUNNEL SLOPE BEHIND THE DRIVER, ON THE ENGINE TUNNEL SLOPE BEHIND THE OFFICER, IN L51, AND R51
7. ONE FULL WIDTH/DEPTH SHELF IN L51 AND L53
8. ONE ADJUSTABLE TRAY WITH SLIDE-OUT SLIDES IN R52

REV	DATE	BY	CH	ENFORCER
30NOV20	LST	DTS		MAKE
06AUG20	LST	DTS		PIERCE
02JUN20	LST	DTS		MODEL

		JOB NO.	34926
		SCALE	DATE
TITLE	1500-D-450 WATER/300 FOAM, 140" BODY, SIDE CONTROL CROSSLAYS, DELUGE, HUSKY 90 FOAM SYSTEM	DRAWN BY	LST
FOR	BROOKLINE FIRE COMPANY HAVERTOWN, PENNSYLVANIA	CHECKED BY	CDU
DWG NO.	34926AD	SHEET SIZE	SHEET NO.
		D	1 OF 1