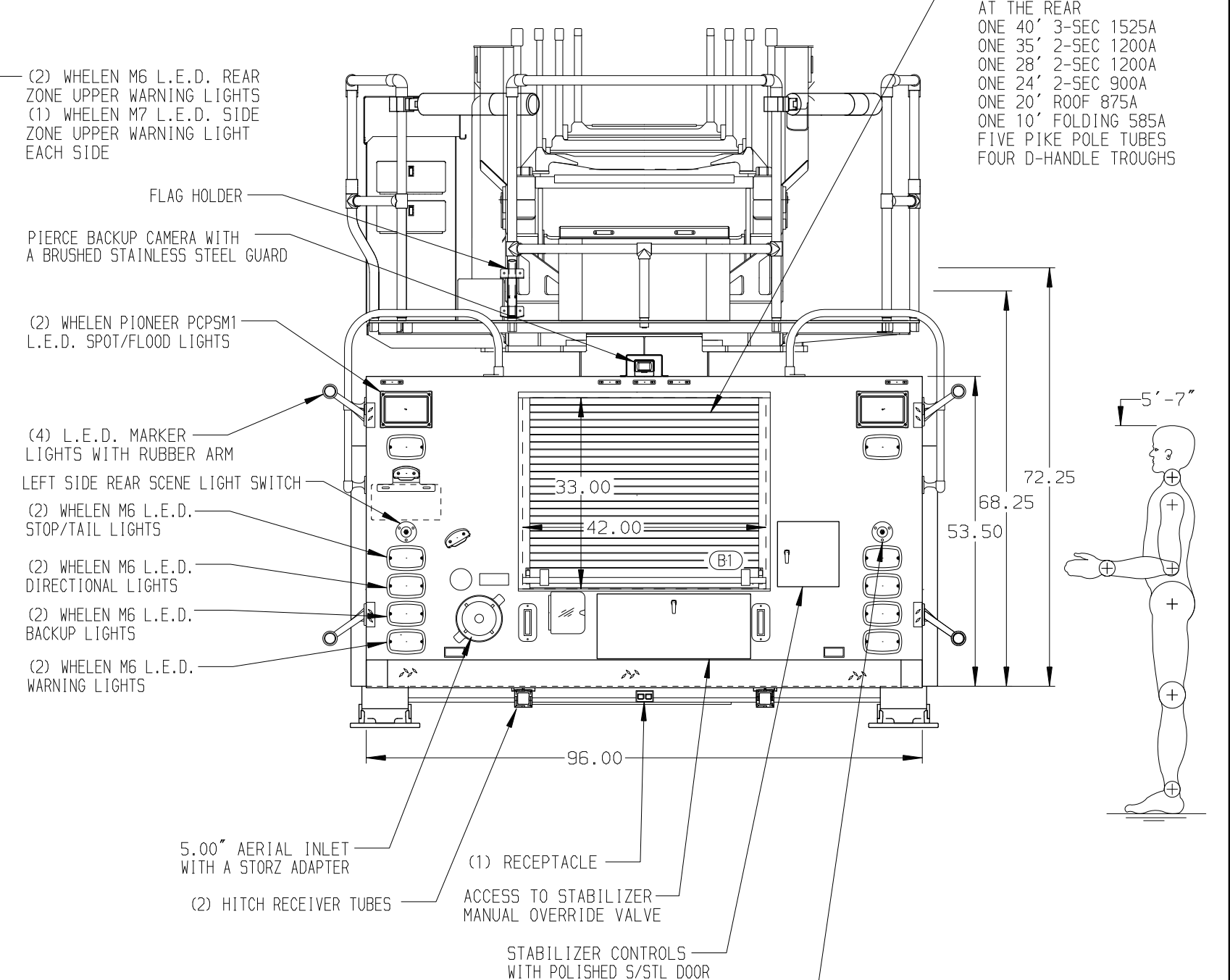
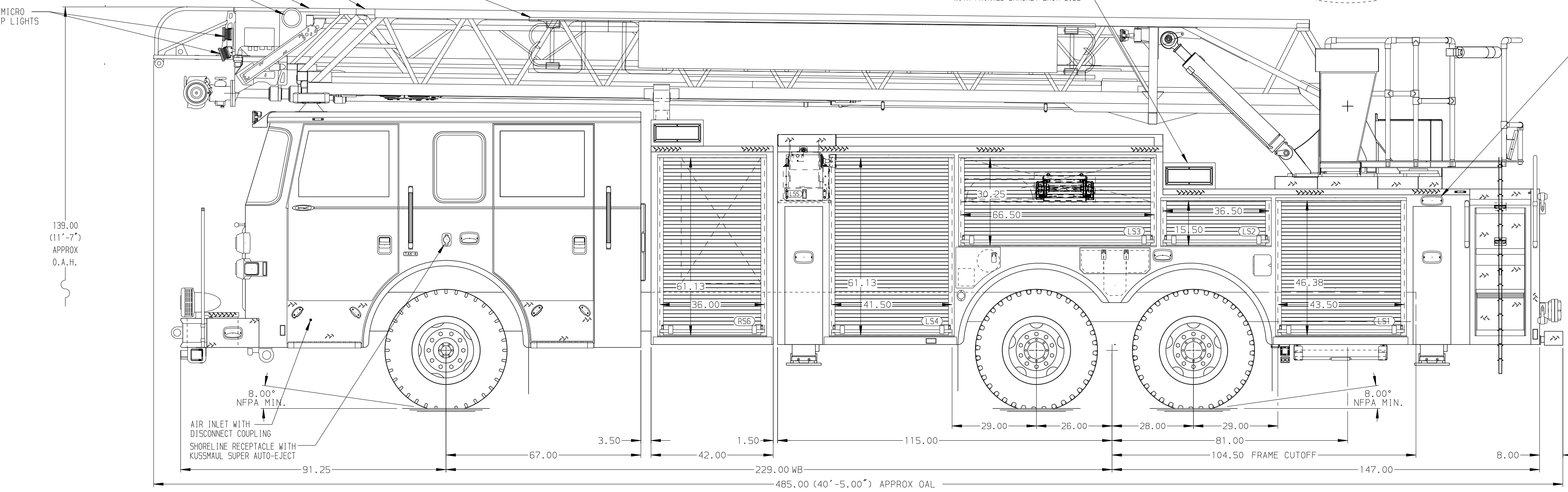
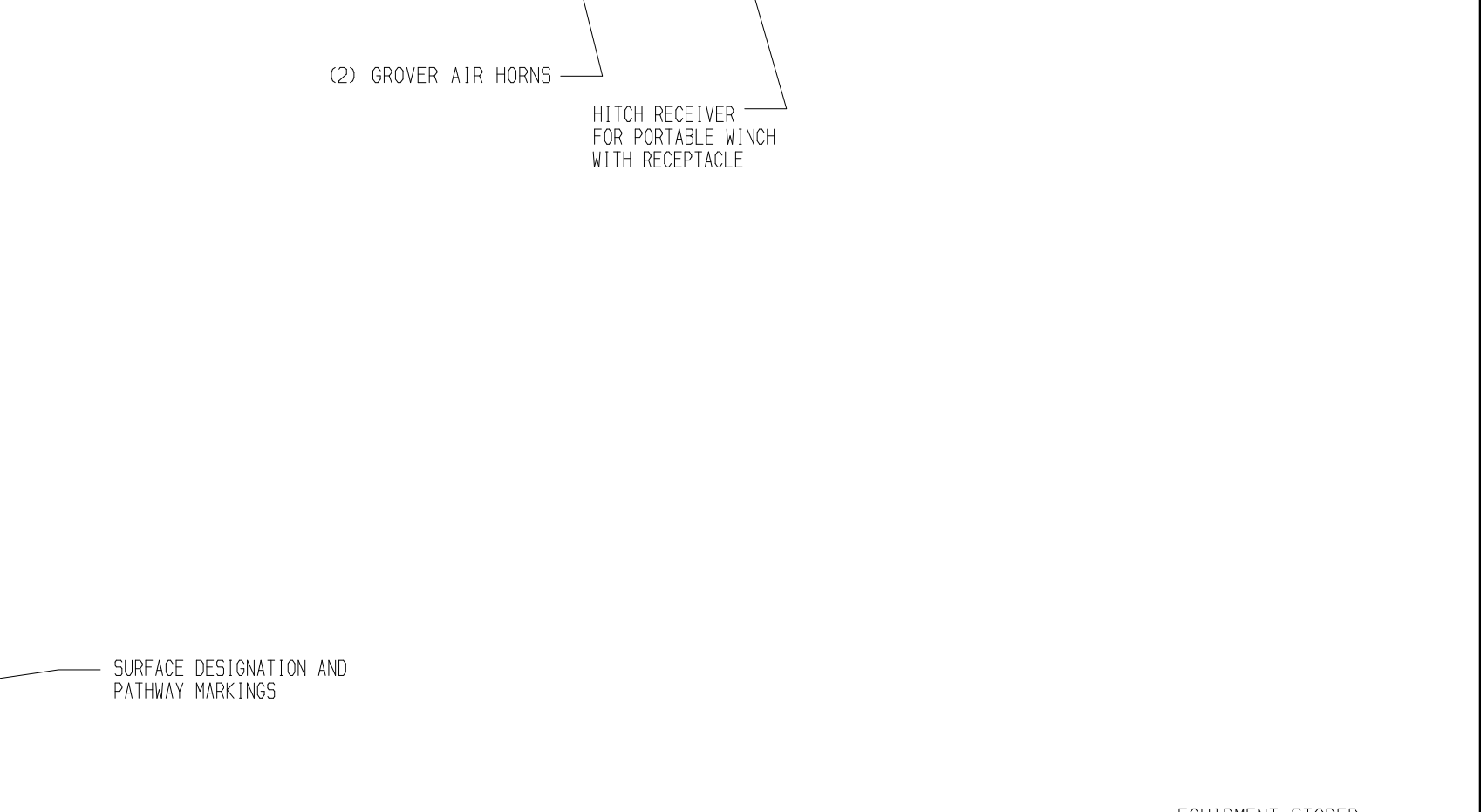
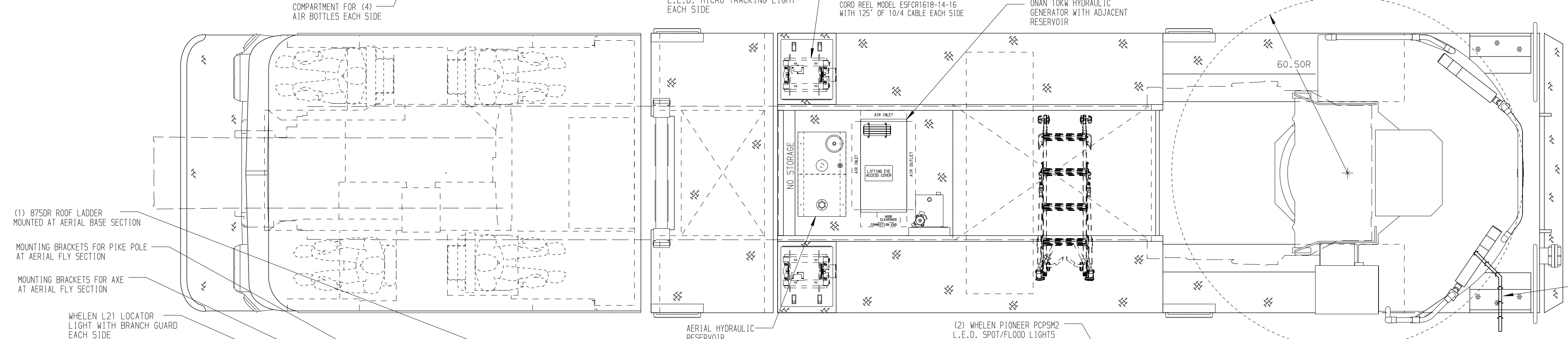
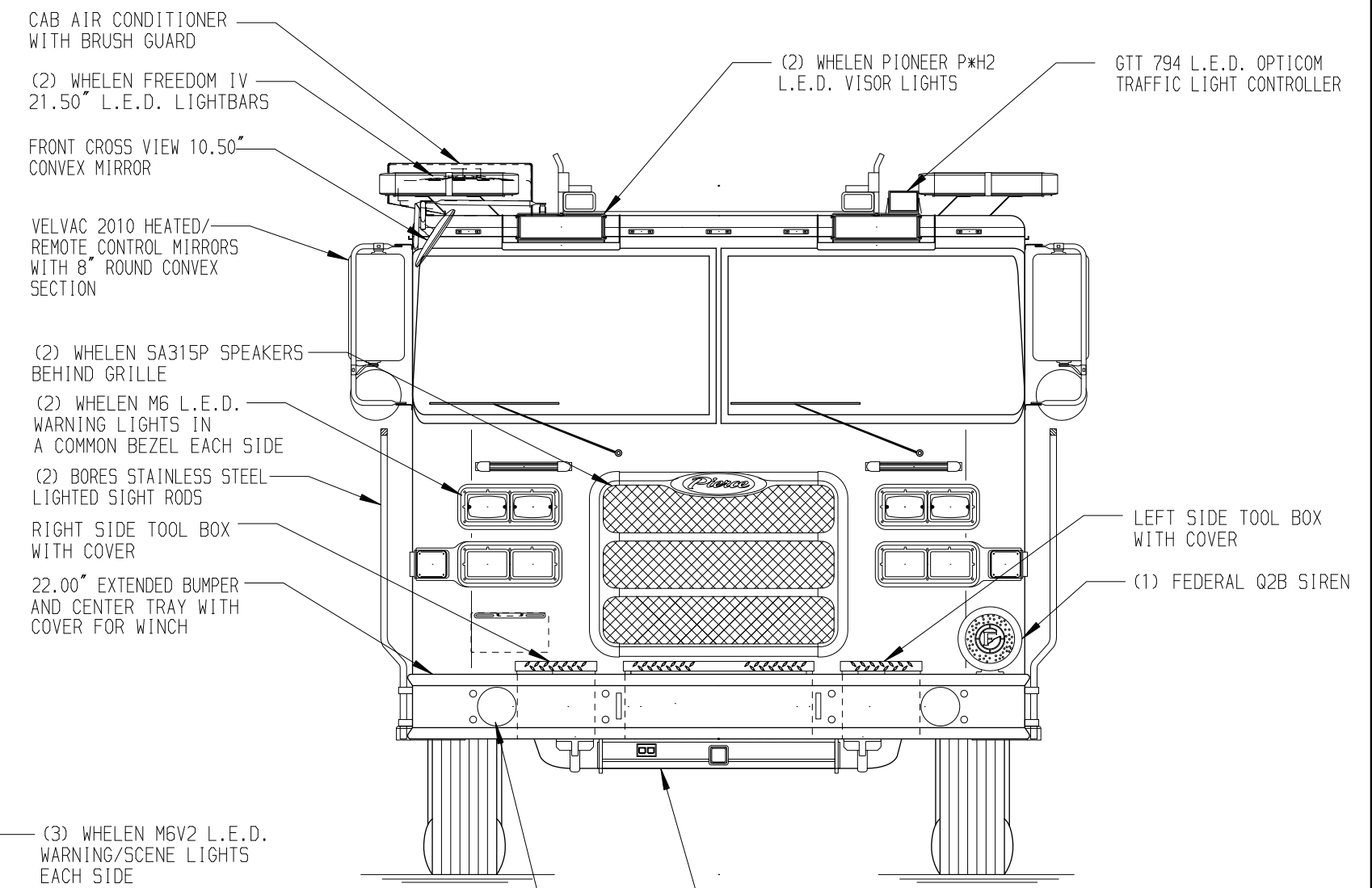
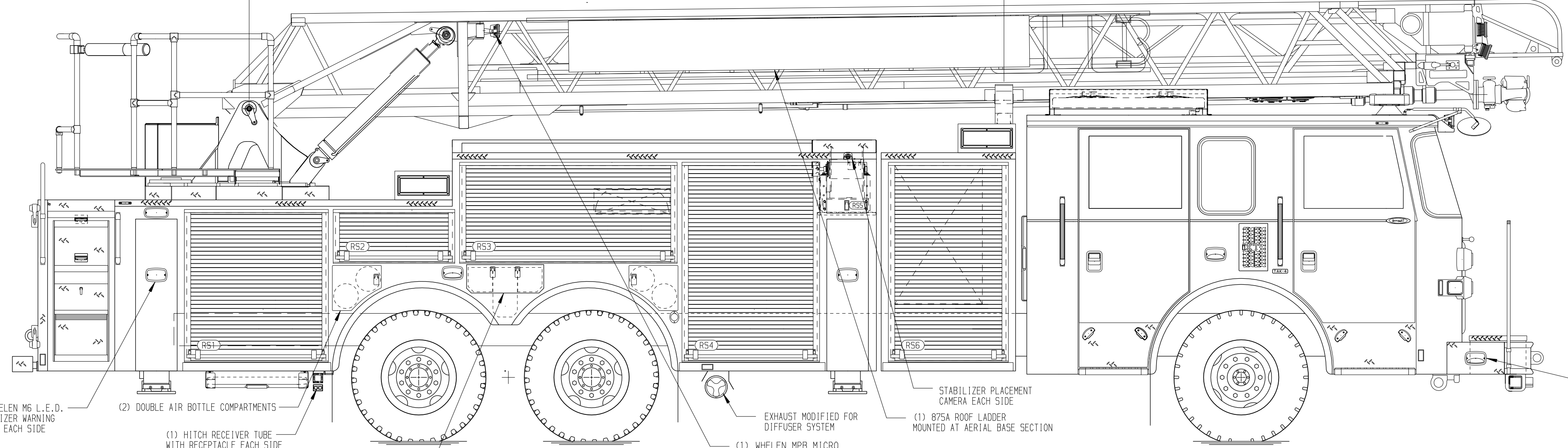


235.87



STAINLESS STEEL BODY SIDE ROLL AND FRONTAL IMPACT PROTECTION MAXIMUM O.A.H. 141"

**NOTE**  
DIMENSIONS SHOWN ARE APPROXIMATE AND ARE SUBJECT TO MINOR DEVIATIONS AS MAY OCCUR OR BE NECESSARY IN CONSTRUCTION. MINOR DETAILS NOT SHOWN.

- FRONT SUSPENSION WITH 3" JOUCE
- AIR OUTLET WITH SHUT-OFF VALVE LOCATED IN COMPARTMENT PER SHOP ORDER
- ALUMINUM TREADPLATE ON CAB ROOF
- BATTERY CHARGER/AIR COMPRESSOR LOCATED PER SHOP ORDER
- BATTERY CHARGE INDICATOR LOCATED NEAR DRIVER'S SEAT RISER WITH BRACKET
- STABILIZER COMPARTMENTS MODIFIED FOR 18" GROUND PENETRATION
- SIX 5/8" DRIP PAN GUARDS FOR ROLL-UP DOOR LOCATED PER SHOP ORDER
- SIX ADJUSTABLE SLIDE-OUT TRAYS IN COMPARTMENT LOCATED PER SHOP ORDER
- TWO ADJUSTABLE TILTING SLIDE-OUT TRAYS IN COMPARTMENT LOCATED PER SHOP ORDER
- FOUR FLOOR MOUNTED SLIDE-OUT TRAY IN COMPARTMENT LOCATED PER SHOP ORDER

- TWO ADJUSTABLE TOOLBOARDS WITH PEGBOARD PATTERN (1/2 TRANSVERSE DEPTH) MOUNTED TO 6" SLIDE-OUT TRAY IN COMPARTMENT PER SHOP ORDER
- TWO ADJUSTABLE TOOLBOARDS WITH PEGBOARD PATTERN MOUNTED TO 10" SLIDE-OUT TRAY IN COMPARTMENT PER SHOP ORDER
- PAC TRAC ON WALL OF COMPARTMENT PER SHOP ORDER
- PAC TRAC ON SHELF/TRAY IN COMPARTMENT LOCATED PER SHOP ORDER
- ONE FULL HEIGHT VERTICAL PARTITION IN TRANSVERSE COMPARTMENT LOCATED PER SHOP ORDER
- ONE RACK FOR (7) AIR BAGS IN COMPARTMENT LOCATED PER SHOP ORDER
- TWO FLOOR EXTENSIONS IN COMPARTMENT LOCATED PER SHOP ORDER
- STORAGE FOR LITTLE GIANT LADDER MODEL OVERHAUL 15197 IN COMPARTMENT LOCATED PER SHOP ORDER
- STORAGE FOR STOKES BASKET 683"X23"X7.25" IN COMPARTMENT LOCATED PER SHOP ORDER
- FOUR TREADPLATE BOXES FOR WHEEL CHOCKS IN COMPARTMENTS PER SHOP ORDER

- TRIDENT FOLDING STEPS ON AERIAL DEVICE
- SIX POLY TOOL BOXES IN COMPARTMENT PER SHOP ORDER
- CIRCUIT BREAKER LOCATED PER SHOP ORDER
- 1500 GPM HIGH FLOW WATERWAY
- 120V POWER TO AERIAL TIP
- 2-WAY INTERCOM SYSTEM BETWEEN AERIAL TIP AND TURNABLE
- AERIAL PEDESTAL LOWERED 1.00"
- LIFTING EYE ROPE RESCUE ATTACHMENT AT AERIAL TIP
- CAB LIFT MANUAL OVERRIDE IN COMPARTMENT LOCATED PER SHOP ORDER
- STORAGE TROUGH FOR SKED STRETCHER IN COMPARTMENT LOCATED PER SHOP ORDER

- TWO 120V 4-PLACE RECEPTACLES LOCATED PER SHOP ORDER
- FOUR 120V 5-PLACE RECEPTACLES LOCATED PER SHOP ORDER
- FOUR 120V RECEPTACLES LOCATED PER SHOP ORDER
- LIMITED RETRACTION NOT REQUIRED

REV	DATE	BY	CH	ARROW	XT
03SEP20	JGA	CW1			
20AUG20	JGA	CW1			
19JUN20	TKA	CW1			
02APR20	JGA	NDA			

		JOB NO.	34921
		SCALE	DATE
<b>TITLE</b> 107' ACENDANT AERIAL LADDER AND BODY ASSEMBLY NO PUMP / NO TANK.		DRAWN BY	JGA
<b>FOR</b> TOWN OF FALMOUTH FALMOUTH, MA		CHECKED BY	NDA
<b>DWG NO.</b> 34921AD-SH1		SHEET SIZE	SHEET NO.
		D	1 OF 1