

HOSEBED CAPACITIES	
①	500' OF 3.00" D.J. HOSE
②	200' OF 2.50" D.J. HOSE
③	1000' OF 4.00" D.J. HOSE
④	300' OF 1.75" D.J. HOSE

SURFACE DESIGNATION AND
PATHWAY MARKINGS

(3) HOSEBED DIVIDERS
0.25" SINGLE SHEET WITH
HAND HOLD CUTOUT

(1) 2.50" OUTLET
WITH 3.00" PIPING

(2) WHELEN M9 L.E.D.
WARNING LIGHTS
EACH SIDE

WHELEN TAL65 L.E.D. TRAFFIC
DIRECTING LIGHT RECESSED WITH STAINLESS
STEEL TRIM

PIERCE BACKUP CAMERA
RECESSED WITH
TRAFFIC DIRECTING LIGHT

(2) WHELEN M9 L.E.D.
WARNING LIGHTS RECESSED

(2) WHELEN 65COENZR
L.E.D. SCENE LIGHTS
RECESSED

CUPSWITCH FOR HOSEBED LIGHTING

(2) WHELEN M6 L.E.D.
WARNING LIGHTS

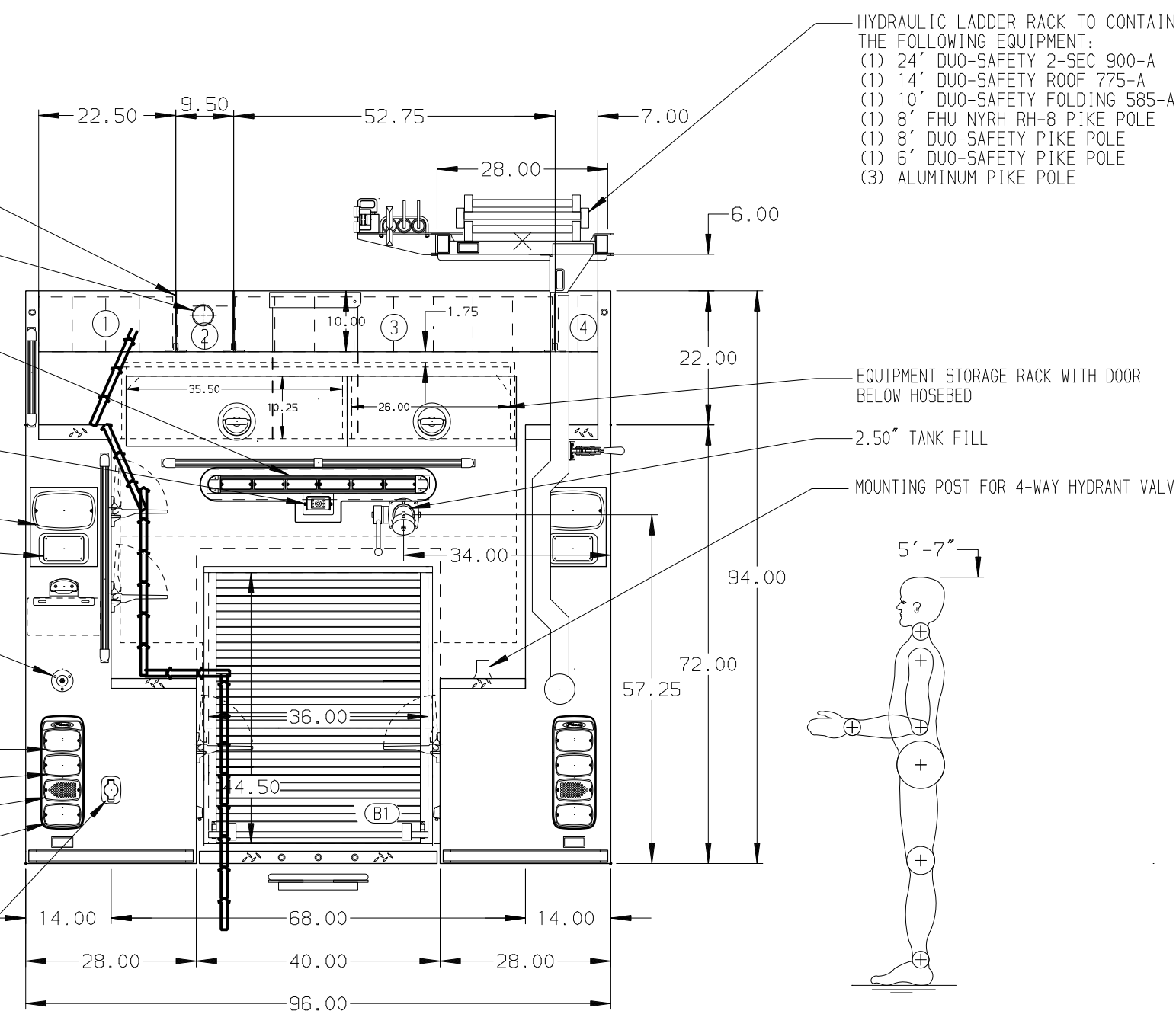
(2) WHELEN M6 L.E.D.
STOP/TAIL LIGHTS

(2) WHELEN M6 L.E.D.
DIRECTIONAL LIGHTS

(2) WHELEN M6 L.E.D.
BACK-UP LIGHTS

LIGHTS MOUNTED IN WHELEN
M6 "PIERCE" BEZELS

120V SHORELINE RECEPTACLE WITH
KUSSMAUL SUPER AUTO-EJECT



ALUMINUM BODY

NOTE

DIMENSIONS SHOWN ARE APPROXIMATE
AND ARE SUBJECT TO MINOR DEVIATIONS
AS MAY OCCUR OR BE NECESSARY IN
CONSTRUCTION.
MINOR DETAILS NOT SHOWN.

- AIR INLET WITH DISCONNECT COUPLING ON DRIVER'S SIDE STEP WELL
- BATTERY CHARGER BEHIND THE DRIVER'S SIDE CAB SEAT
- BATTERY CHARGER INDICATOR LOCATED ON DRIVER'S CAB STEP AREA
- MOUNTING FOR 4-WAY HYDRANT VALVE WITH 3" POST ON THE RIGHT SIDE OF THE TAILBOARD
- DUAL L.E.D. LIGHT STRIPS LOCATED IN HOSE BED
- PULL STRAP ON DOOR IN LS2 AND RS2
- DRIP PAN GUARD FOR ROLL-UP DOOR IN B1
- FULL WIDTH/DEPTH ADJUSTABLE SHELVES TWO IN RS2 AND ONE IN LS1, LS3, R1, AND RS3
- ONE FLOOR MOUNTED SLIDE-OUT TRAY IN LS1 AND B1
- SWING-OUT TOOL BOARD WITH PEGBOARD PATTERN IN LS2

- ROLL-OUT PROTECTIVE FLAP FOR BODY PANEL LS2 AND RS2
- PARTITION BETWEEN COMPARTMENTS LS1/B1 AND RS1/B1
- ONE 120V NEMA DUPLEX RECEPTACLE BEHIND THE OFFICER'S SEAT
- ONE 120V DUPLEX RECEPTACLE IN LS1, LS2, LS3, B1, R1, RS1, RS2, AND RS3
- COMPRESSOR BEHIND THE OFFICER'S SIDE CAB SEAT

REV	DATE	BY	CH	VELOCITY FR
27MAY20	LST	DTs	MAKE	PIERCE
20APR20	LST	DTs	MODEL	
14APR20	LST	DTs		

Pierce MANUFACTURING INC.		JOB NO.	34918
		SCALE	1:24
		DATE	
		DRAWN BY	LST
		CHECKED BY	WKL
		SHEET NO.	1 OF 1
		SHEET SIZE	D
		TITLE	1250-D-1250 GAL POLY, 161" FH FOLDR BODY
		FOR	(2) SPEEDLAYS, HYD EQUIP RACK, DELUGE
		DWG NO.	PATAGONIA VOLUNTEER FIRE DEPARTMENT
			HERMITAGE, PENNSYLVANIA
			34918AD