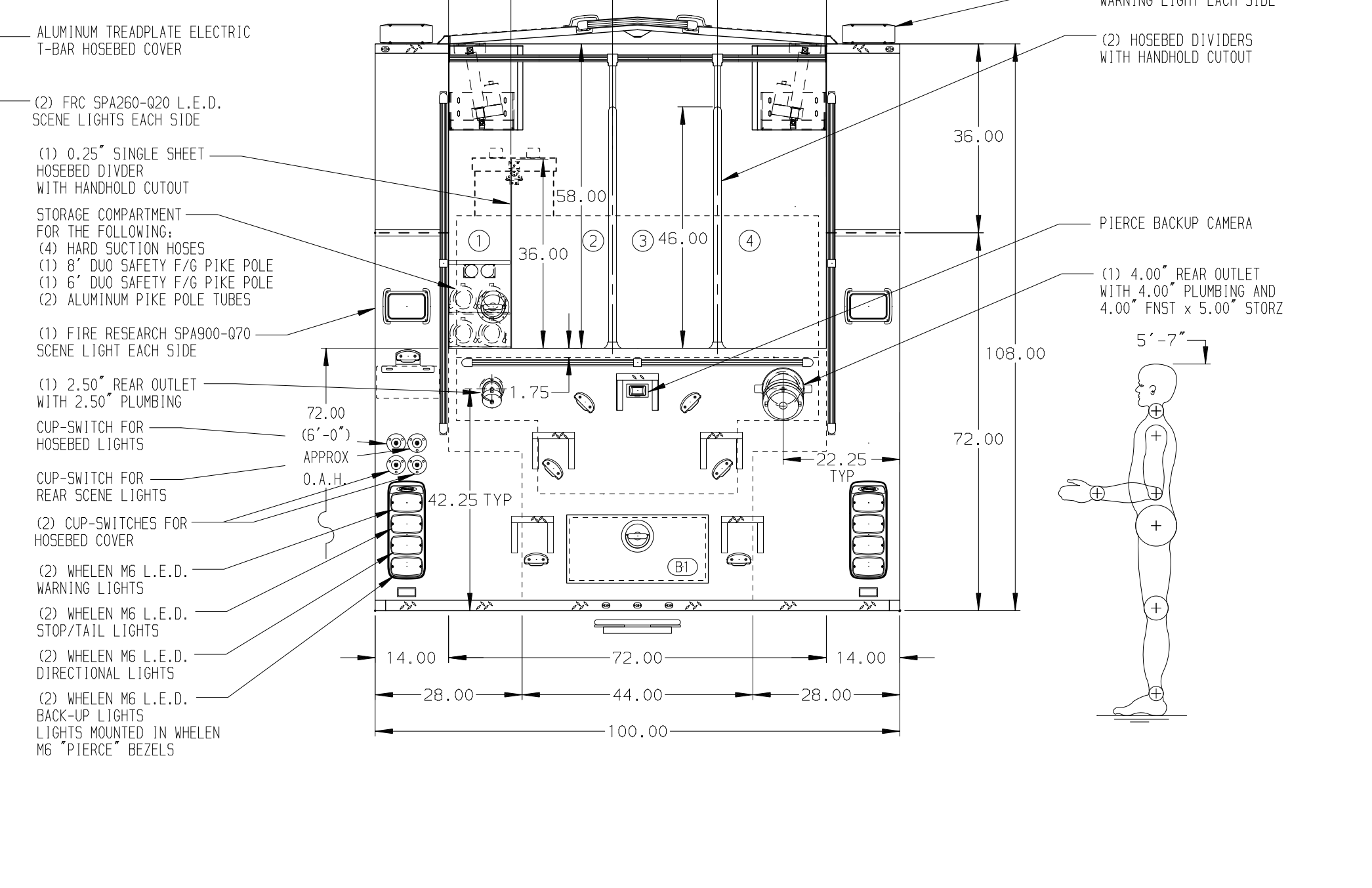
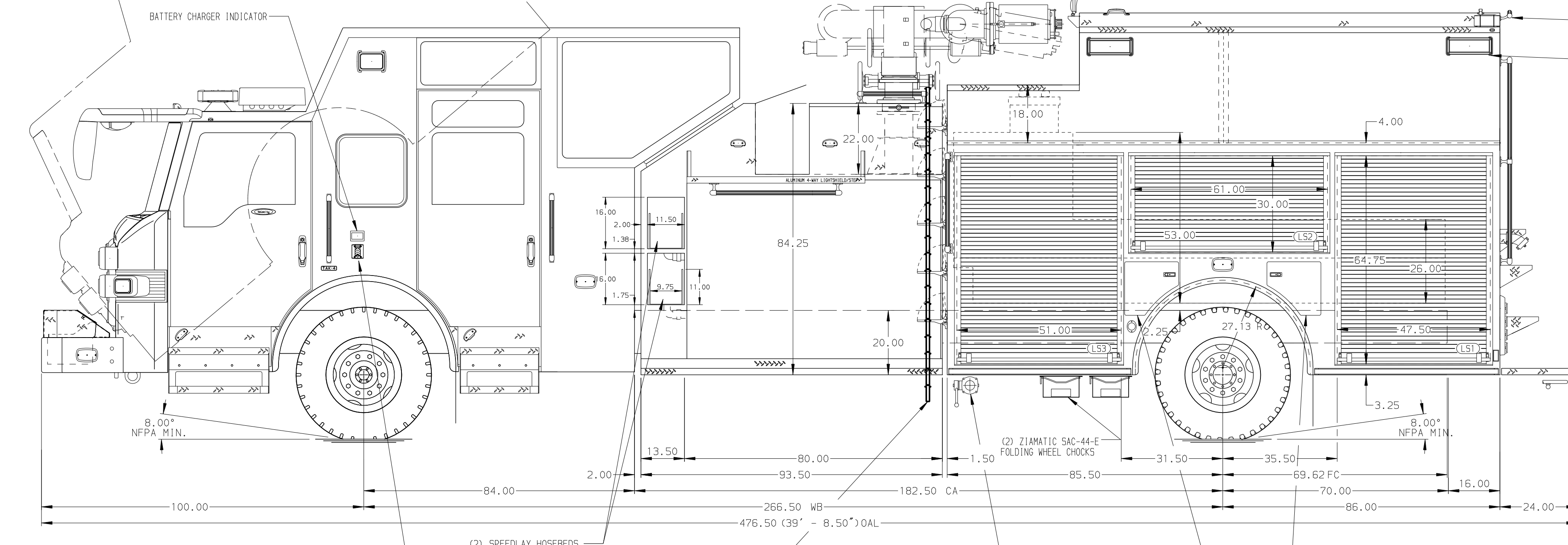


- HOSEBED CAPACITIES
- ① - 500' OF 3.00" HOSE
  - ② - 1000' OF 5.00" HOSE
  - ③ - 1000' OF 6.00" HOSE
  - ④ - 500' OF 5.00" HOSE



ALUMINUM BODY

MAXIMUM O.A.L. 476.50"

MAXIMUM O.A.H. 147"

NOTE  
DIMENSIONS SHOWN ARE APPROXIMATE AND ARE SUBJECT TO MINOR DEVIATIONS AS MAY OCCUR OR BE NECESSARY IN CONSTRUCTION. MINOR DETAILS NOT SHOWN.

1. AIR INLET/OUTLET WITH DISCONNECT FITTING LOCATED ON DRIVER'S SIDE PUMP PANEL
2. KUSSMAUL AIR COMPRESSOR LOCATED BEHIND DRIVER'S SEAT
3. BATTERY CHARGER LOCATED BEHIND DRIVER SEAT
4. ELASTIC PULL STRAP FOR DOOR ON COMPARTMENT LS1, LS2, LS3, RS1, RS2 & RS3
5. ONE FULL WIDTH/DEPTH ADJUSTABLE SHELF IN COMPARTMENT LS1, LS3, RS1 & RS3
6. ONE FLOOR MOUNTED SLIDE-OUT TRAY IN COMPARTMENT LS1, LS3, RS1 & RS3
7. ONE SWING-OUT ALUMINUM TOOL BOARD IN COMPARTMENT LS2

REV	DATE	BY	CH	VELOCITY
08JUL20	LST	AZA		MAKE
08MAY20	LST	CWI		PIERCE
28FEB20	AMI	AZA		MODEL

		JOB NO.	34885
		SCALE	1:24
TITLE 3000-D-1000P FOAM TANK, 171" INDUSTRIAL PUMPER BODY (1) DEADLAY, (2) SPEEDLAYS W/TRAYS, AMBASSADOR MONITOR FOR LYONDELLBASELL-LA PORTE LA PORTE, TEXAS		DRAWN BY	AMI
		CHECKED BY	AZA
DWG NO. 34885AD		SHEET SIZE	D
		SHEET NO.	1 OF 1