

# Pumper, PUC BODY

Pumper, PUC, Aluminum

## CHASSIS

Impel Chassis, PUC

## CHASSIS AXLE, FRONT, CUSTOM

18,000 Lb TAK-4 Axle

## AXLE, REAR

31,000 Lb Meritor Axle

## ENGINE

450 HP Cummins L9 Engine

## TRANSMISSION

Allison 5th Gen, 3000 EVS P

## BUMPER

16" Extended Stainless Steel

## CAB

7010 Impel FR Cab, PUC

## BODY

### WATER TANK

1000 Gallon Poly Water Tank

### COMPT, PUMPER, REAR

40.50" FF RollUp Rear Compt w/Tailboard, PUC

### COMPT, PUMPER, LEFT SIDE

189" RollUp Full Height & Depth Front & Rear, PUC

### COMPT, PUMPER, RIGHT SIDE

189" RollUp Full Height & Depth Front & Rear, PUC

## FIRE SUPPRESSION PUMPHOUSE

Control Zone, PUC

## PUMP

1500 GPM Pierce PUC

## CROSSLAYS, 1.50"

(2) 1.50", Poly Trays, 200"

## CROSSLAYS, 2.50"

2.50" Crosslay Not Required

## GENERATOR

Generator Not Required

## Foam System

Husky 3 Single Agent Foam System

## Foam Cell

20 Gallon Foam Cell, Not Reduced Water, PUC

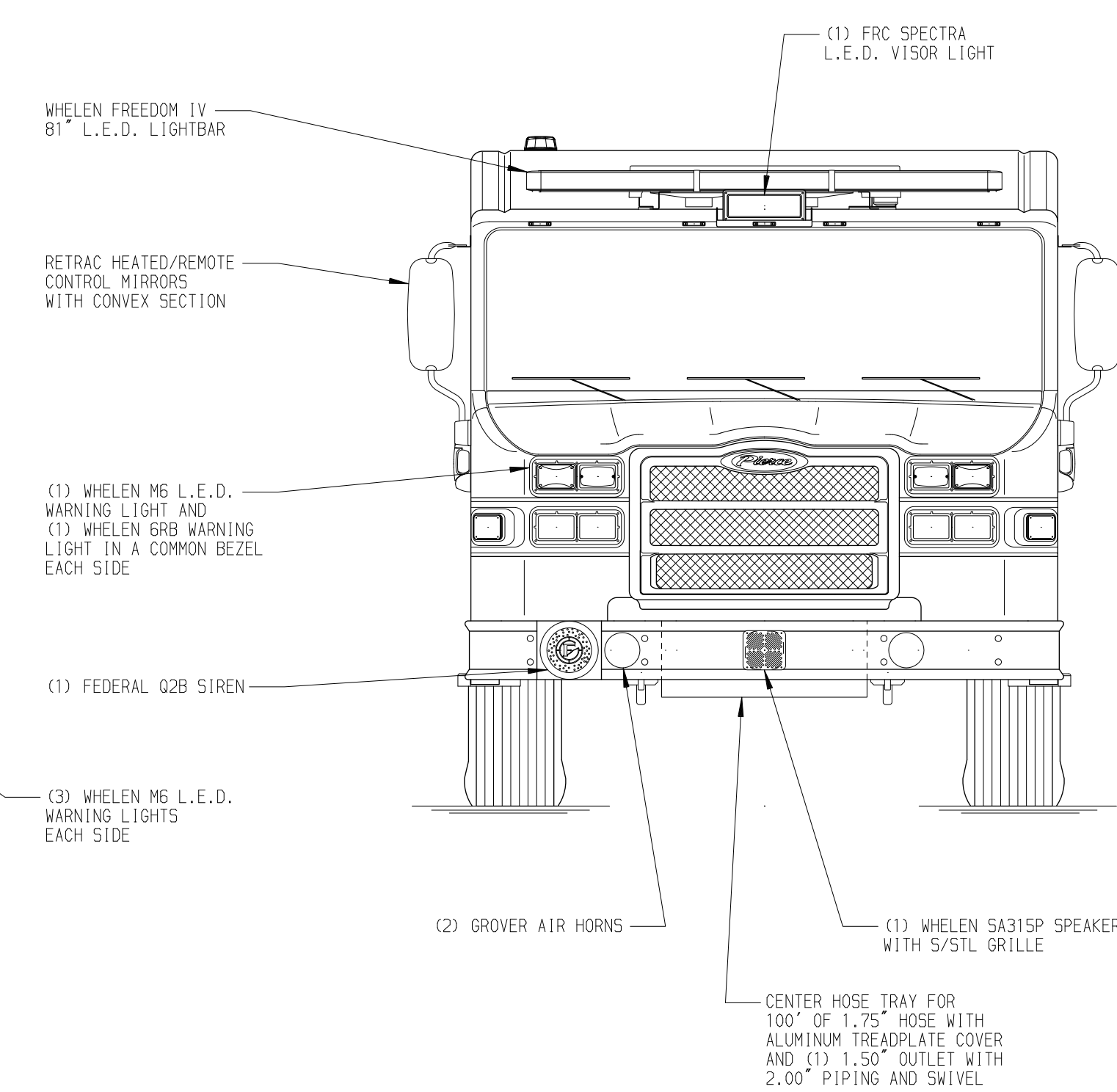
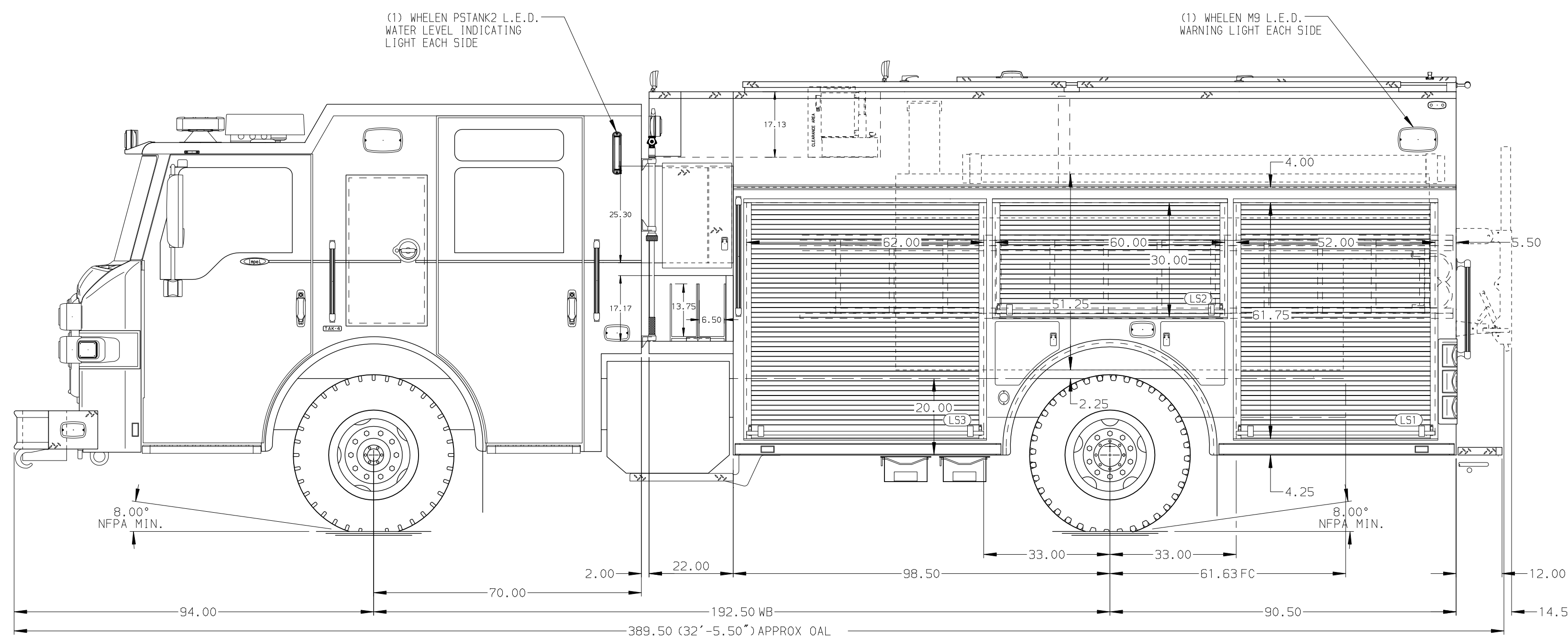
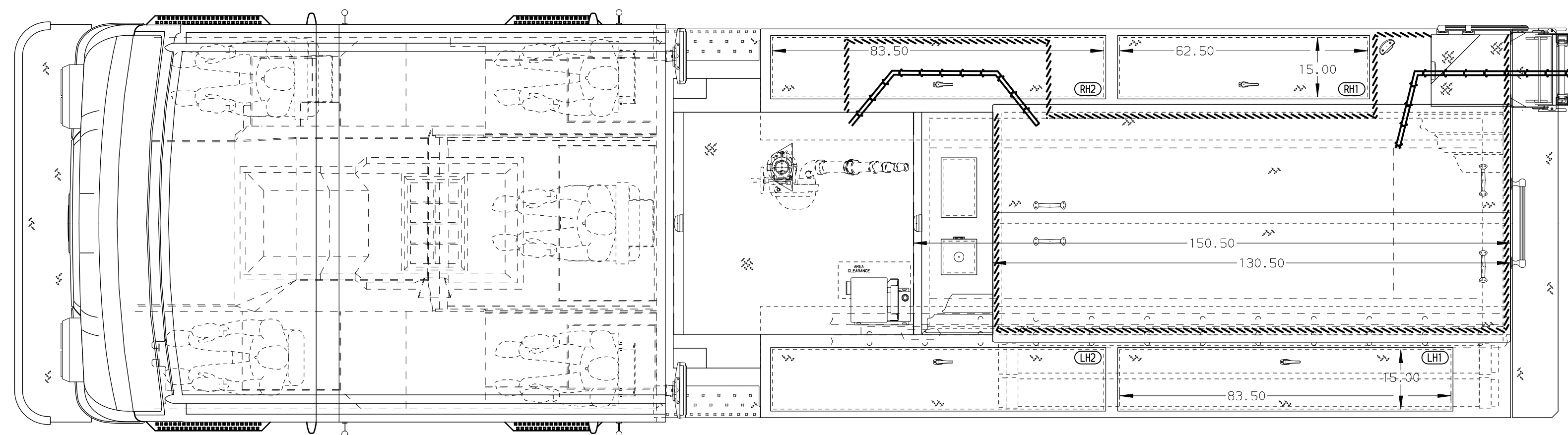
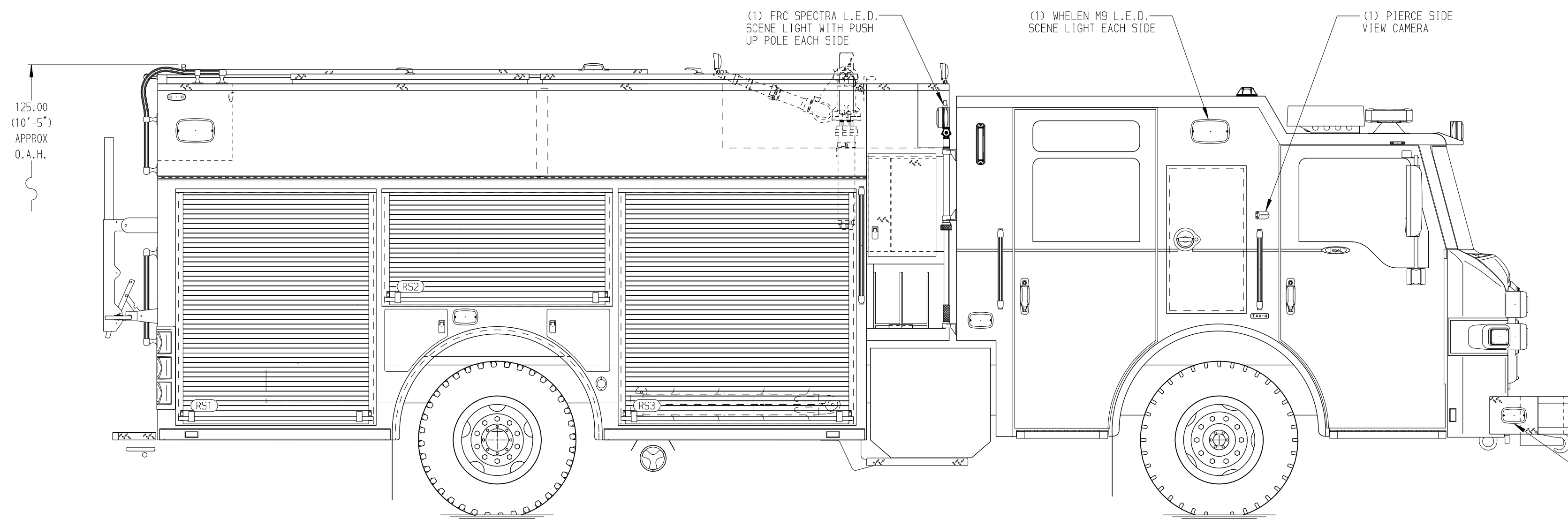
Side Roll and Frontal Impact Protection

### NOTE

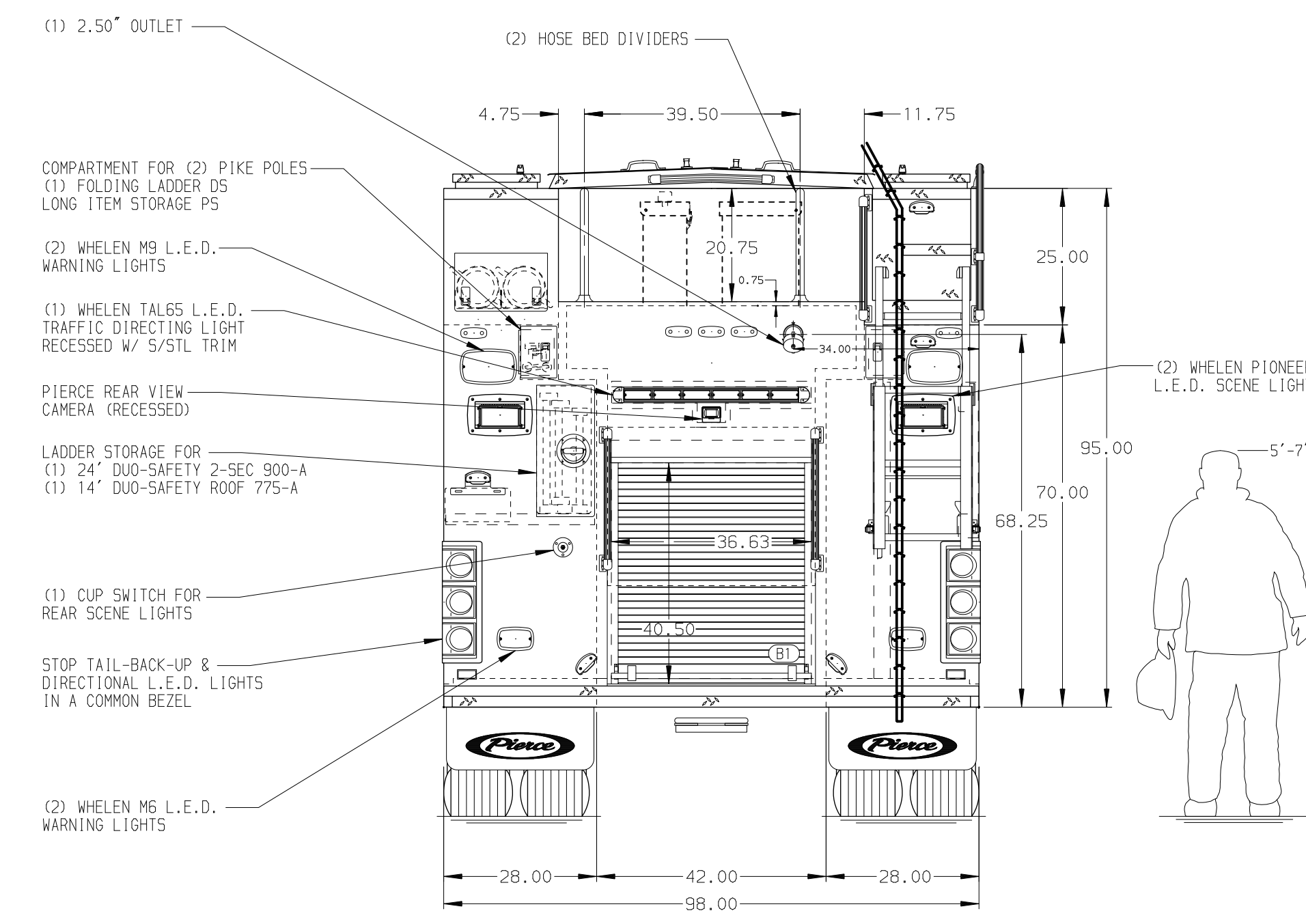
DIMENSIONS SHOWN ARE APPROXIMATE AND ARE SUBJECT TO MINOR DEVIATIONS AS MAY OCCUR OR BE NECESSARY IN CONSTRUCTION. MINOR DETAILS NOT SHOWN.

1. AUTOMATIC TIRE CHAINS
2. SHORELINE RECEPTACLE WITH LOCATED IN THE DRIVER SIDE STEPWELL
3. AIR INLET WITH DISCONNECT COUPLING IN THE DRIVER SIDE STEPWELL
4. BATTERY CHARGER LOCATED IN COMPARTMENT PER SHOP ORDER
5. BATTERY CHARGE INDICATOR LOCATED NEAR DRIVER SEAT RISER WITH BRACKET
6. SIX ADJUSTABLE SHELVES LOCATED PER SHOP ORDER
7. TWO FLOOR MOUNTED SLIDE-OUT TRAYS LOCATED PER SHOP ORDER
8. TWO TILTING/SLIDE-OUT TRAYS LOCATED PER SHOP ORDER
9. ONE SWING-OUT TOOLBOARD LOCATED PER SHOP ORDER
10. STORAGE FOR LITTLE GIANT LADDER MODEL 17 LOCATED PER SHOP ORDER

11. FOUR 120V DUPLEX RECEPTACLES LOCATED PER SHOP ORDER
12. ONE TOOLBOARD ADDED TO SLIDE OUT TRAY LOCATED PER SHOP ORDER



HOSEBED CAPACITY	
BED 1	200' OF 1.75" D.J. POLY HOSE
BED 2	1000' OF 5.00" D.J. POLY HOSE
BED 3	300' OF 3.00" D.J. POLY HOSE



		JOB NO.	34859
		SCALE	DATE
<b>Pierce MANUFACTURING INC.</b>		TITLE	Pierce PUC Pumper Approval Drawing
		MAKE	FOR
<b>PIERCE</b>		DRAWN BY	COL 04FEB20
		CHECKED BY	NPE 5FEB20
<b>IMPEL</b>		DWG NO.	34859AD
		SHEET NO.	1 OF 1

REV	DATE	BY	CH
20APR20	COL	CW1	
25MAR20	COL	CW1	