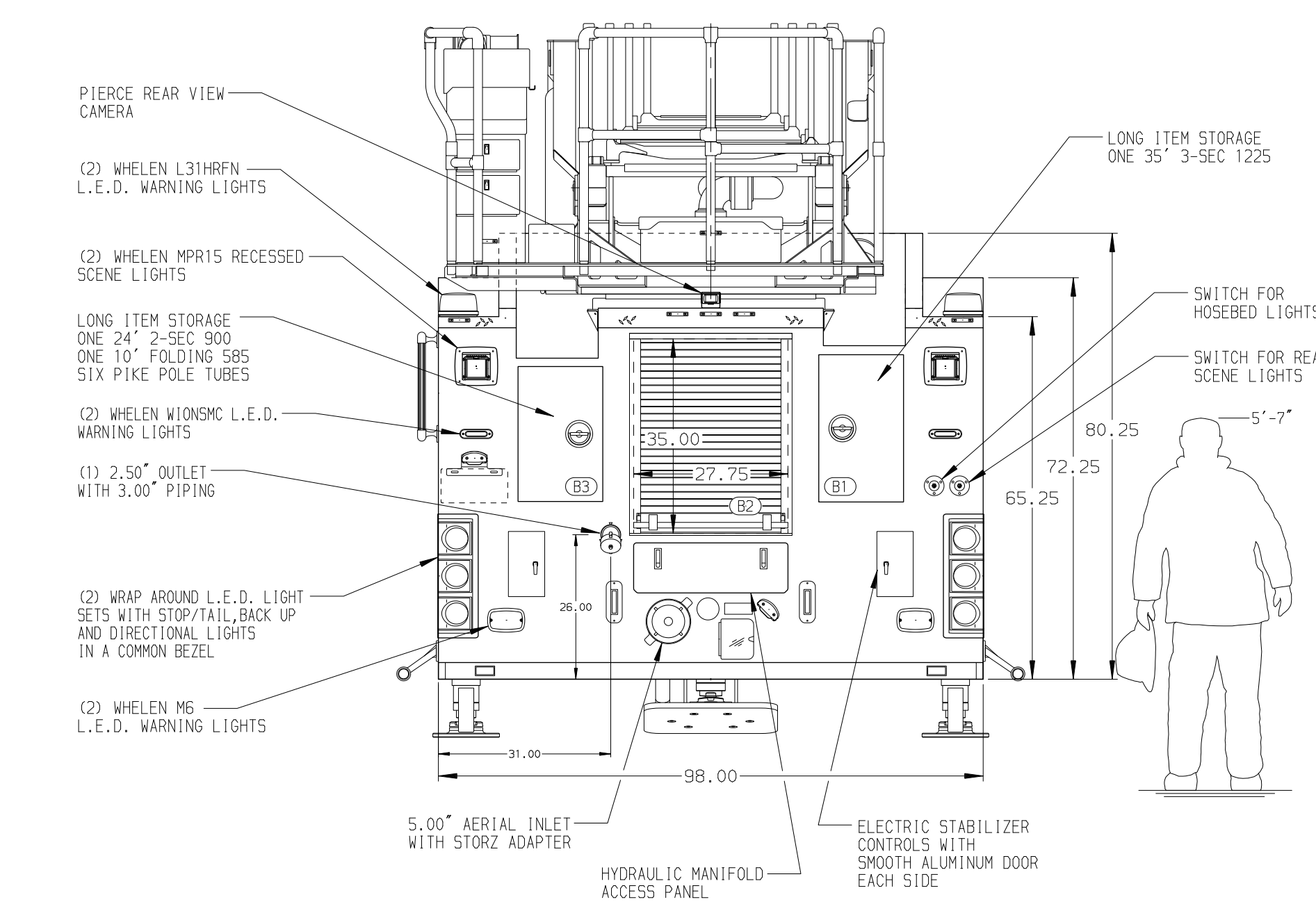


<b>BODY</b> 107' ASL Aluminum Body <b>COMPT, LEFT SIDE FRONT</b> Full Height Lap Forward <b>COMPT, LEFT SIDE REAR</b> Full Height Lap Rearward <b>COMPT, RIGHT SIDE FRONT</b> Full Height Lap Forward <b>COMPT, RIGHT SIDE REAR</b> Full Height Lap Rearward	<b>WATER TANK</b> 470 Gallon Poly Water Tank <b>Foam System</b> Foam Pro 2002 Foam System <b>Foam Cell</b> 30 Gallon Foam Cell, Reduced Water
---	--



<b>CHASSIS</b> Arrow XT Chassis 525 HP DD13 Engine	<b>CAB</b> 6700 Arrow XT Cab <b>BUMPER</b> 26\" Painted Underslung	<b>AXLE, FRONT, CUSTOM</b> 24,000 Lb TAK-4 Axle <b>AXLE, REAR</b> 33,500 Lb Meritor Axle	<b>TRANSMISSION</b> Allison 5th Gen, 4000 EV5 P	<b>PUMPHOUSE</b> 52\" Control Zone Side Mount <b>PUMP</b> 1500 GPM Waterous CSU	<b>CROSSLAYS, 1.50\"</b> 1.75\" CrossLay Not Required <b>CROSSLAYS, 2.50\"</b> (2) CrossLays-200' of 2.50\" Hose	<b>SPEEDLAYS</b> SpeedLays Not Required <b>GENERATOR</b> Generator Not Required
--	---	---	--	--	---	--

<b>NOTE</b> DIMENSIONS SHOWN ARE APPROXIMATE AND ARE SUBJECT TO MINOR DEVIATIONS AS MAY OCCUR OR BE NECESSARY IN CONSTRUCTION. MINOR DETAILS NOT SHOWN.	1. SHORELINE RECEPTACLE WITH KUSSMAUL SUPER AUTO-EJECT LOCATED ON DRIVER SIDE PUMP PANEL 2. BATTERY CHARGER LOCATED IN COMPARTMENT PER SHOP ORDER 3. BATTERY CHARGE INDICATOR LOCATED ON DRIVER SIDE PUMP PANEL 4. FIVE ADJUSTABLE SHELVES IN COMPARTMENTS PER SHOP ORDER 5. ONE ADJUSTABLE SLIDE-OUT TRAY IN COMPARTMENT PER SHOP ORDER 6. THREE FLOOR MOUNTED SLIDE-OUT TRAYS IN COMPARTMENTS PER SHOP ORDER 7. TWO SWING-OUT TOOLBOARDS WITH PEG BOARD IN COMPARTMENTS PER SHOP ORDER 8. TWO VERTICAL PARTITIONS IN COMPARTMENTS PER SHOP ORDER 9. SIX PEGBOARD ON BACK WALL OF COMPARTMENTS PER SHOP ORDER	10. DUAL L.E.D. LIGHT STRIPS LOCATED IN HOSE BED 11. ONE 6-PLACE RECEPTACLE STRIP IN CAB PER SHOP ORDER 12. TWO 120V DUPLEX RECEPTACLES IN COMPARTMENTS PER SHOP ORDER 13. NON-RAISED AERIAL PEDESTAL 14. 1500 GPM HIGH FLOW WATERWAY 15. LIMITED RETRACTION NOT REQUIRED
--	--	--

<b>Pierce MANUFACTURING INC.</b>	JOB NO. 34830
SCALE 1:24 DATE 28JAN20	DRAWN BY TKA DATE 28JAN20
CHECKED BY CRI DATE 03FEB20	SHEET NO. 1 OF 1
TITLE 107' ASCENDANT AERIAL LADDER AND BODY ASSEMBLY FOR FORT MITCHELL FIRE DEPARTMENT FORT MITCHELL, KENTUCKY	DWG NO. 34830AD