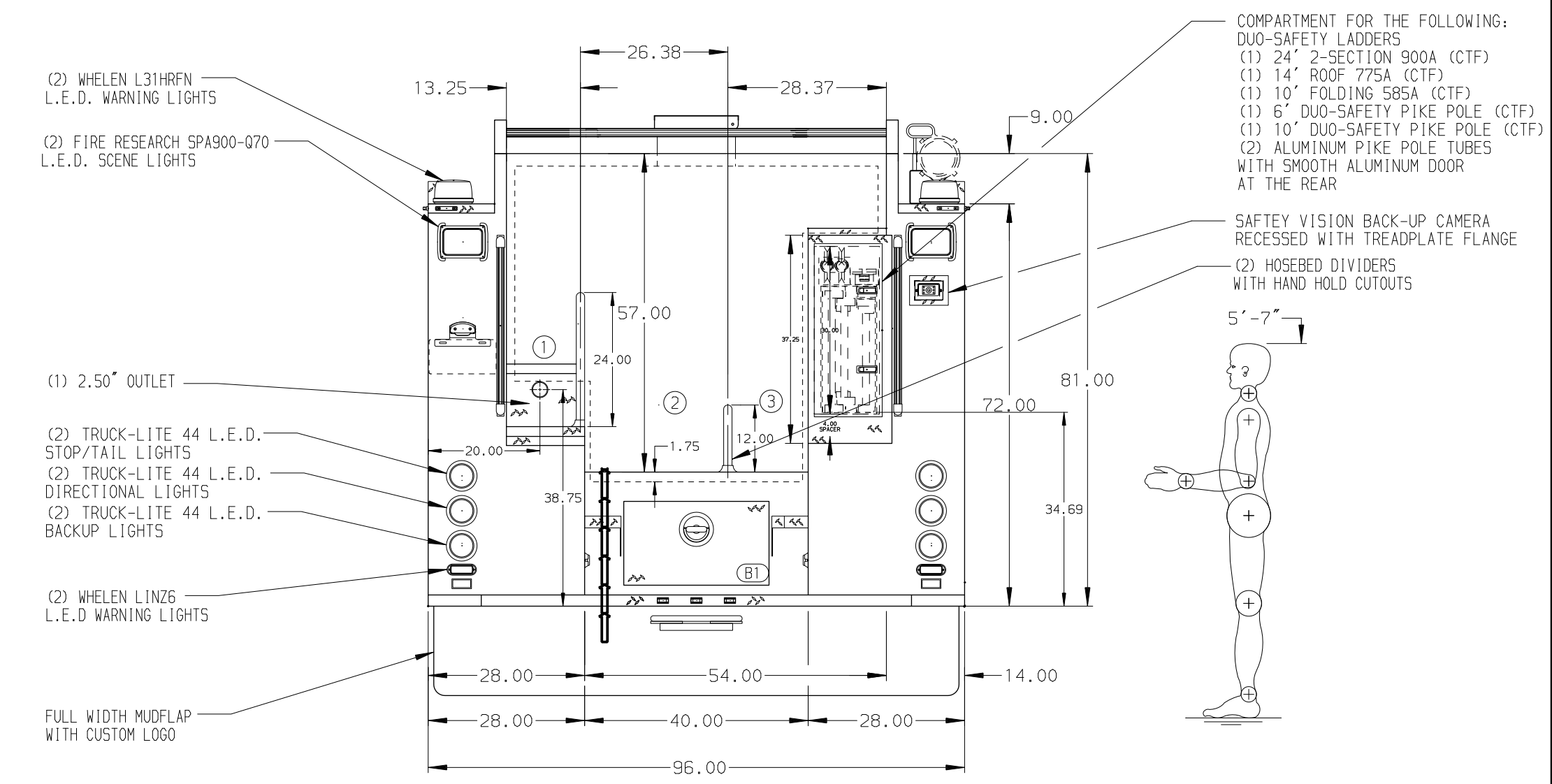
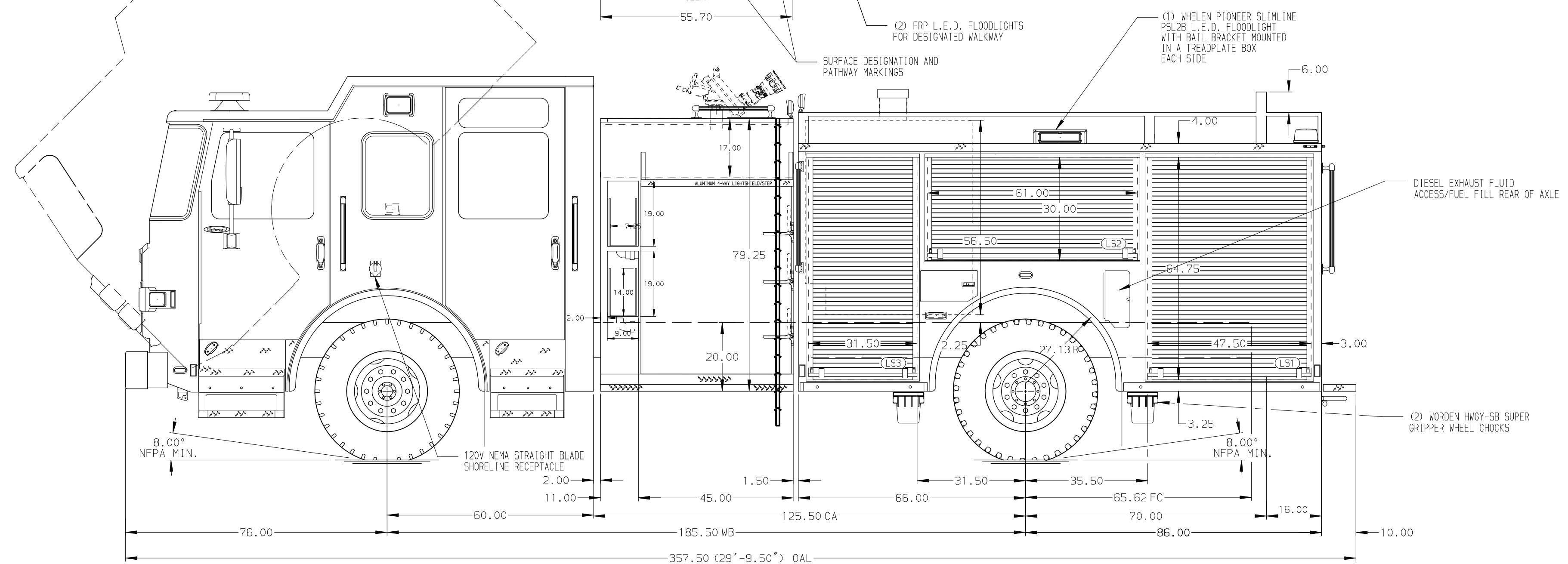


- HOSEBED CAPACITIES
- ① 200' OF 2.50" D.J. POLY HOSE
 - ② 300' OF 5.00" D.J. POLY HOSE
 - ③ 300' OF 2.50" D.J. POLY HOSE



ALUMINUM BODY

NOTE
DIMENSIONS SHOWN ARE APPROXIMATE AND ARE SUBJECT TO MINOR DEVIATIONS AS MAY OCCUR OR BE NECESSARY IN CONSTRUCTION. MINOR DETAILS NOT SHOWN.

- 1. BATTERY CHARGER/AIR COMPRESSOR LOCATED IN COMPARTMENT LS3
- 2. BATTERY CHARGER INDICATOR BEHIND DRIVER'S SEAT DISPLAYED THROUGH WINDOW
- 3. ONE FULL WIDTH/DEPTH ADJUSTABLE SHELF IN COMPARTMENT LS3, RS1 AND RS5; TWO IN LS1
- 4. ONE FLOOR MOUNTED SLIDE-OUT TRAY IN COMPARTMENT RS1
- 5. THREE AIR BOTTLE HOLDERS WITH TRACKS IN COMPARTMENTS LS1 AND RS1; FOUR IN LS2 AND RS2
- 6. TWO ADDITIONAL POLY TRAYS SHIPPED LOOSE
- 7. 120V 6-PLACE RECEPTACLE STRIP LOCATED BEHIND THE OFFICER'S SEAT
- 8. POLY MOUNTING BOARD IN COMPARTMENTS LS3 AND RS3

REV	DATE	BY	CH	ENFORCER
11MAY20	SHD	CW1		MAKE
10APR20	SAM	CW1		PIERCE
06MAR20	KLE	WKL		MODEL

		JOB NO.	34814
		SCALE	DATE
TITLE	1250-D-500, 152", FH FRONT & REAR, FDLER (2) XLYAS, DELUGE, LADDERS ASIDE TANK	DRAWN BY	LME 28FEB20
FOR	WCTC PEWAUKEE, WISCONSIN	CHECKED BY	CDU 28FEB20
DWG NO.	34814AD	SHEET SIZE	SHEET NO.
		D	1 OF 1