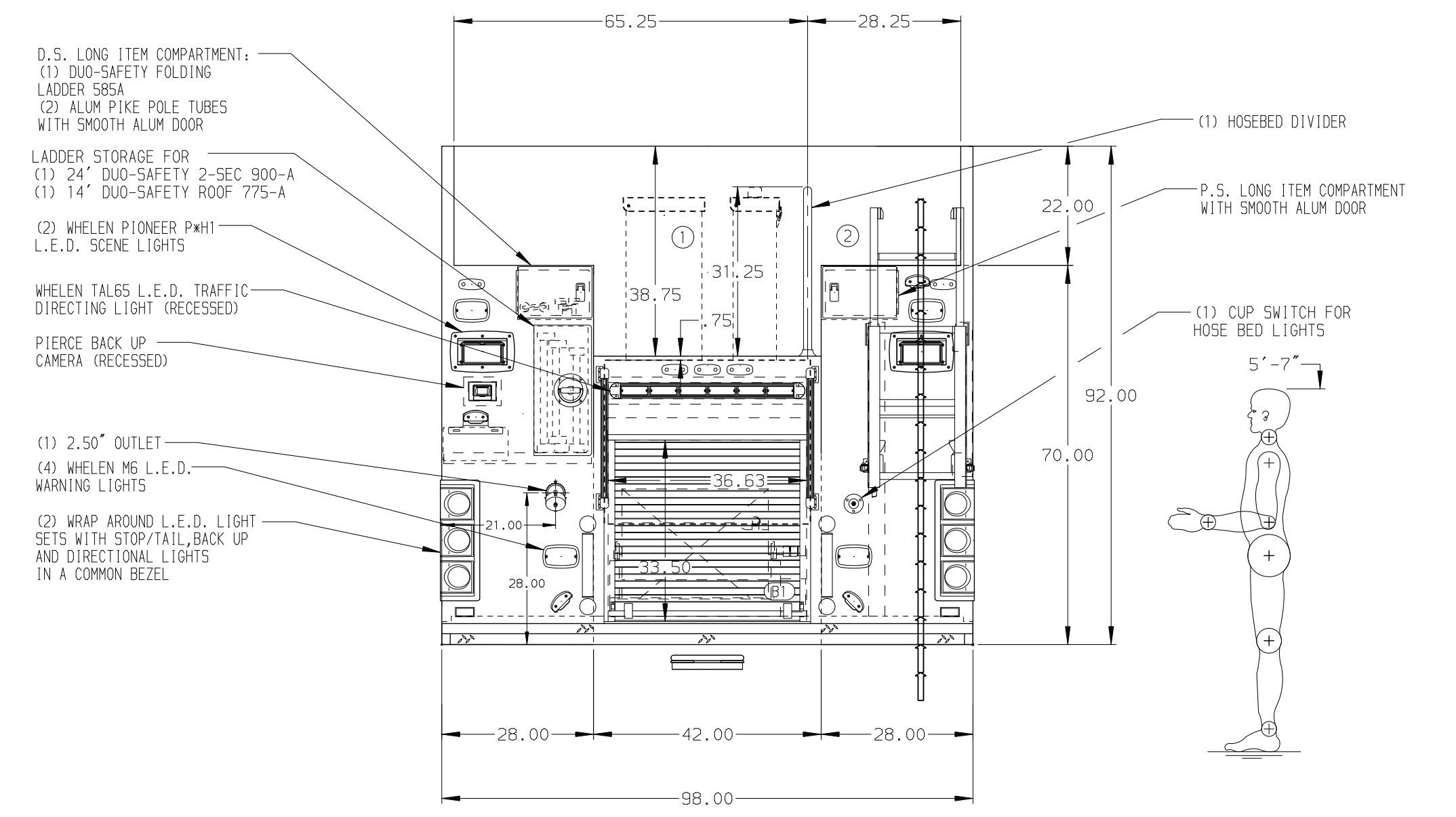
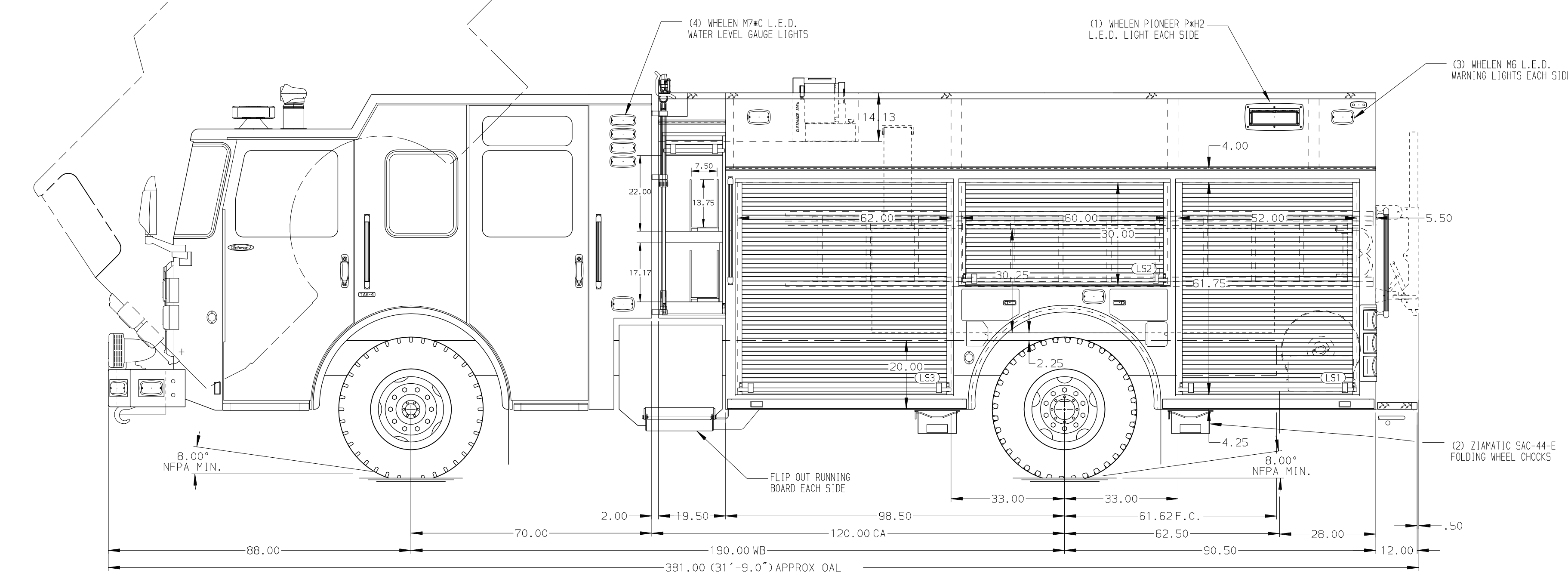


HOSEBED CAPACITIES

- ① 800' OF 5.00" L.D. HOSE
- ② 500' OF 3.00" D.J. POLY HOSE



ALUMINUM BODY

SIDE ROLL AND FRONTAL IMPACT PROTECTION

**NOTE**  
DIMENSIONS SHOWN ARE APPROXIMATE AND ARE SUBJECT TO MINOR DEVIATIONS AS MAY OCCUR OR BE NECESSARY IN CONSTRUCTION. MINOR DETAILS NOT SHOWN.

- BATTERY CHARGER/COMPRESSOR LOCATED IN COMPARTMENT LS3
- BATTERY CHARGE INDICATOR LOCATED ON DRIVER'S SEAT RISER
- DUAL L.E.D. LIGHT STRIPS LOCATED IN HOSE BED
- ONE FULL WIDTH/DEPTH ADJUSTABLE SHELF IN COMPARTMENTS LS1, LS3, RS1 AND RS3
- ONE FLOOR MOUNTED SLIDE-OUT TRAY IN COMPARTMENTS LS1 AND RS1
- ETCH DRUMMER ASSEMBLY IN COMPARTMENT LS3
- AIR OUTLET WITH SHUT OFF VALVE ON THE LS PUMP PANEL
- SHORELINE WITH DISCONNECT COUPLING LOCATED IN D5 STEP WELL
- AIR INLET WITH DISCONNECT COUPLING LOCATED IN D5 STEP WELL
- ONE HANNAY ELECTRIC REWIND BOOSTER REEL MODEL SBEF34-23-24 LOCATED IN COMPARTMENT B1 WITH CAPACITY FOR 150' OF 1.00" BOOSTER HOSE WITH A 1/3 HP MOTOR

REV	DATE	BY	CH	ENFORCER
24JUL20	LME	PPE	CHASSIS DATA	
03JUN20	LME	PPE	MAKE	
18MAY20	SHD	PPE	PIERCE	
16APR20	LME	PPE	MODEL	
11FEB20	LME	NPE		

		JOB NO.	34805
		SCALE	01-04
<b>TITLE</b> 1500-D-500P, 480G WATER W/20G FOAM CELL, 189" PUC (3) CROSSLAYS, LADDERS THRU BODY, HUSKY 3, DELUGE		DRAWN BY	LME
		CHECKED BY	NPE
<b>FOR</b> CITY OF JACKSON JACKSON, MISSISSIPPI		SHEET SIZE	D
		SHEET NO.	1 OF 1
<b>DWG NO.</b> 34805AD			