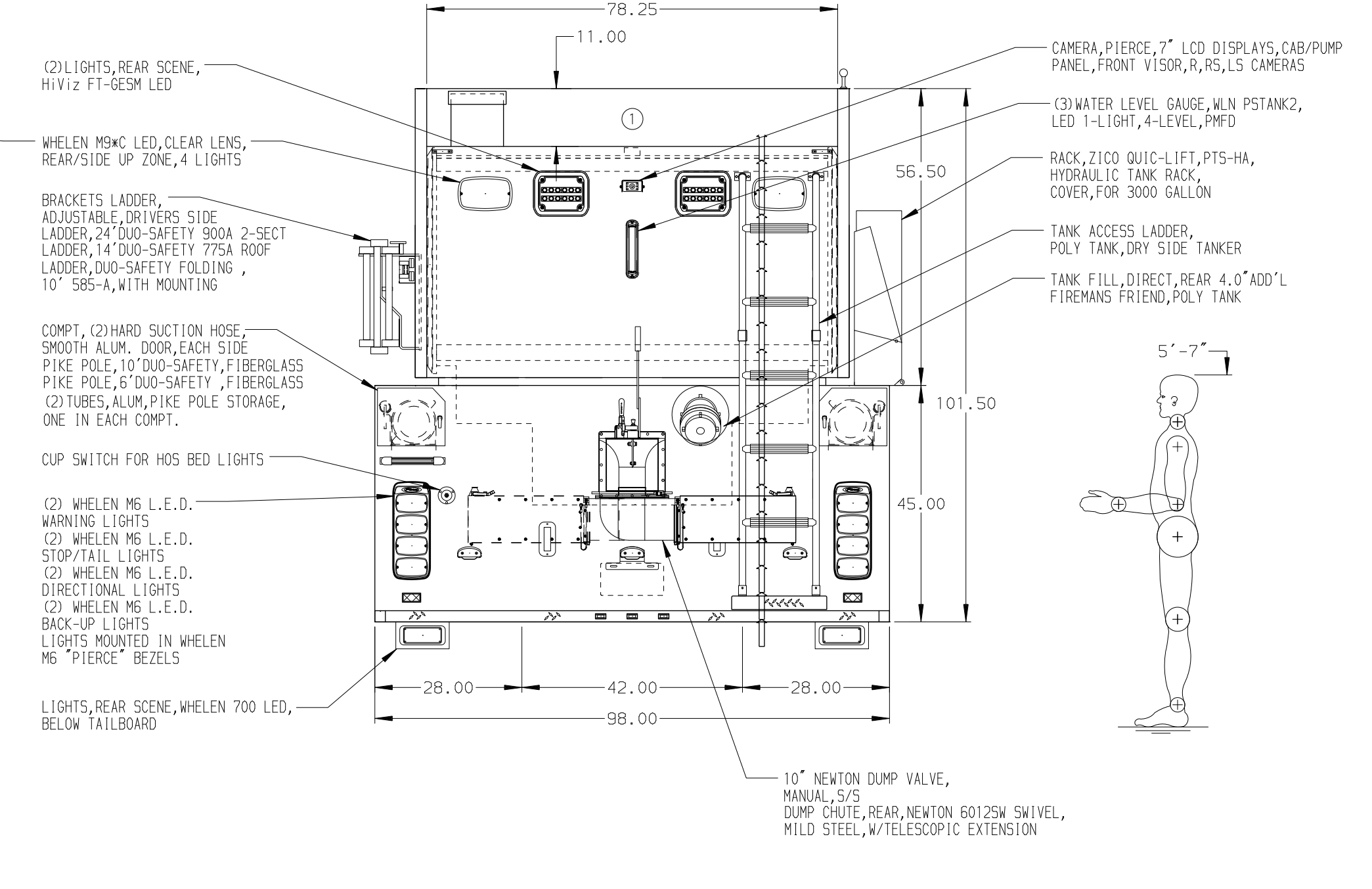
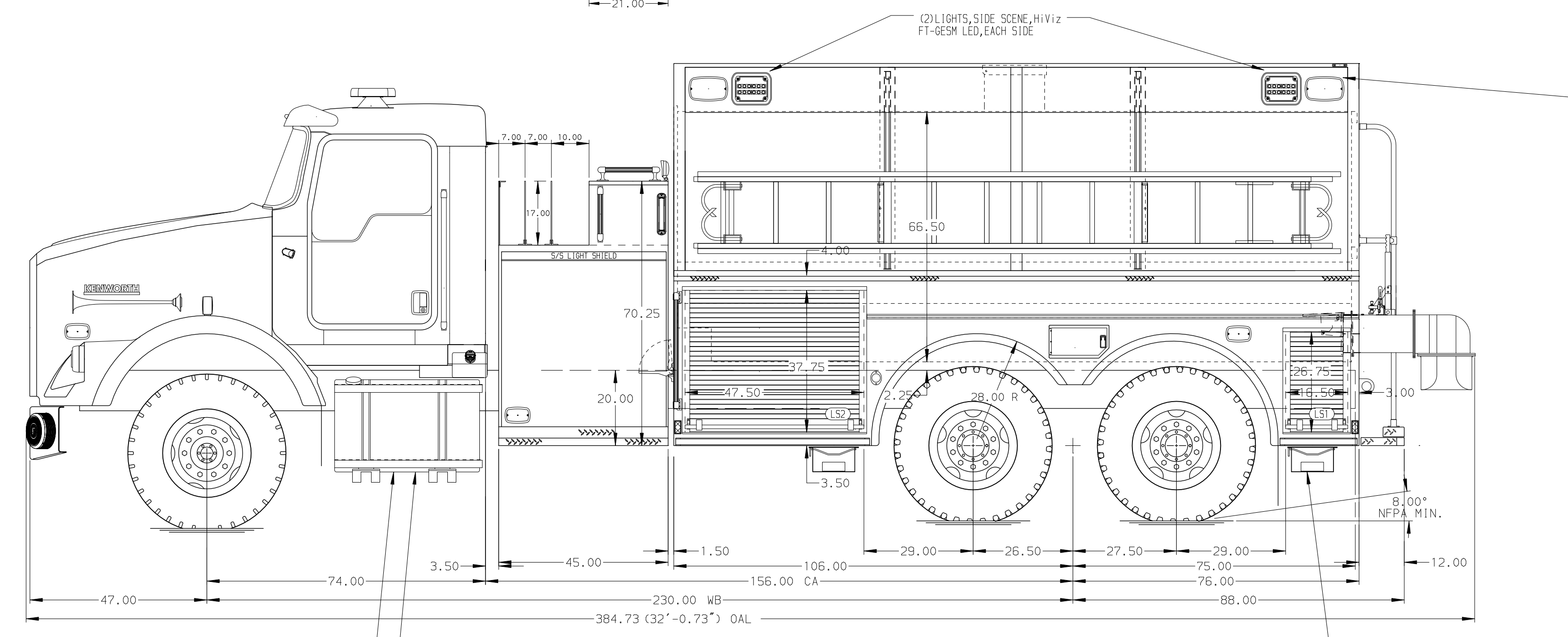


HOSEBED CAPACITIES
 ① 800' OF 2.50" D.J. POLY HOSE



ALUMINUM BODY

NOTE
 DIMENSIONS SHOWN ARE APPROXIMATE AND ARE SUBJECT TO MINOR DEVIATIONS AS MAY OCCUR OR BE NECESSARY IN CONSTRUCTION. MINOR DETAILS NOT SHOWN.

						JOB NO.	34794
						SCALE	1:24
						DATE	20MAR20
						DRAWN BY	CRH
						CHECKED BY	RWI
						SHEET SIZE	SHEET NO.
						DWG NO.	1 OF 1
REV	DATE	BY	CH	T800 6X4	TITLE	1250-D-3000 3000 GAL WATERTANK, 182" DRYSIDE, 45" SIDE CONTROL, (2) 1.50" CROSSLAYS, (1) 2.50" CROSSLAY	
21JUL20		RHU	AJA	KENWORTH	FOR	LEDBETTER FIRE DISTRICT	
15JUN20		CRH	AJA	MODEL		LEDBETTER, KENTUCKY	
						34794AD	