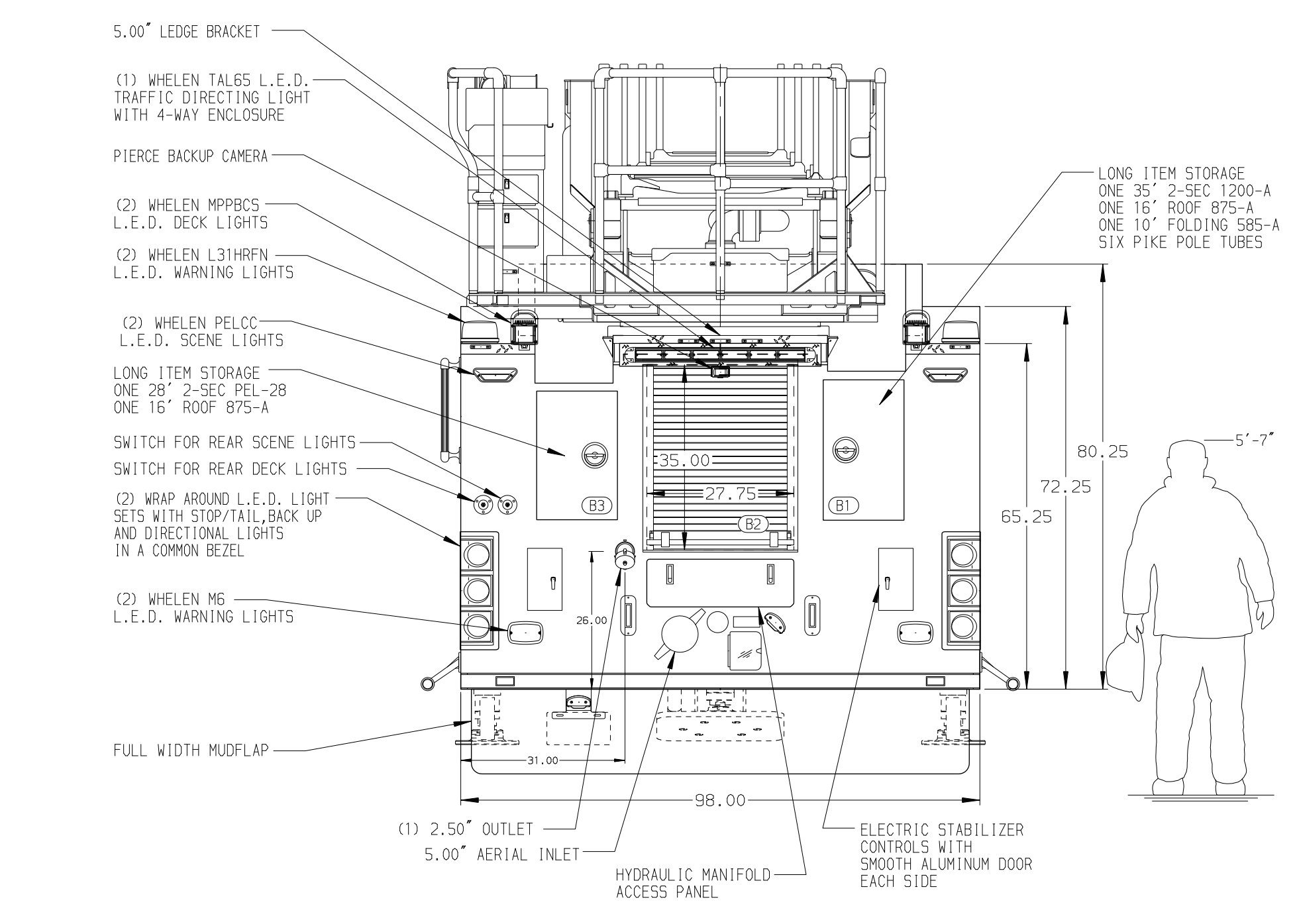


BODY	WATER TANK
107' ASL Aluminum Body PUC	500 Gallon Poly Water Tank
COMPT, LEFT SIDE FRONT	Foam System
Full Height RollUp Forward	Foam System Not Required
COMPT, LEFT SIDE REAR	Foam Cell
Full Height RollUp Rearward	Foam Cell Not Required
COMPT, RIGHT SIDE FRONT	
Full Height RollUp Forward	
COMPT, RIGHT SIDE REAR	
Full Height RollUp Rearward	



CHASSIS Enforcer Chassis, PUC 450 HP Cummins L9 Engine	CAB 7000 Enforcer Cab, PUC 22\"	AXLE, FRONT, CUSTOM 20,000 Lb Dana Axle AXLE, REAR 33,500 Lb Meritor Axle	TRANSMISSION Allison 5th Gen, 3000 EV5 P	PUMPHOUSE Control Zone, PAL/PAP PUC PUMP 1500 GPM Pierce PUC	CROSSLAYS, 1.50" (2) 1.50\", Full Width Trays, 200' CROSSLAYS, 2.50" (1) 2.50\", Full Width Tray, 200'	SPEEDLAYS Speedlays Not Required GENERATOR Generator Not Required	SAFETY Side Roll and Frontal Impact Protection
---	--	--	--	--	---	--	---

NOTE
DIMENSIONS SHOWN ARE APPROXIMATE AND ARE SUBJECT TO MINOR DEVIATIONS AS MAY OCCUR OR BE NECESSARY IN CONSTRUCTION. MINOR DETAILS NOT SHOWN.

- SHORELINE RECEPTACLE WITH KUSSMAUL SUPER AUTO-EJECT LOCATED ON THE DRIVER'S SIDE OF THE CREW CAB
- AIR INLET WITH DISCONNECT COUPLING IN THE DRIVER SIDE STEPWELL
- BATTERY CHARGER LOCATED IN COMPARTMENT PER SHOP ORDER
- BATTERY CHARGE INDICATOR LOCATED ON THE DRIVER SIDE SEAT RISER
- L.E.D. DUAL LIGHT STRIPS LOCATED IN HOSE BED PER SHOP ORDER
- EIGHT ADJUSTABLE SHELVES IN COMPARTMENTS PER SHOP ORDER
- ONE ADJUSTABLE SLIDE-OUT TRAY IN COMPARTMENT PER SHOP ORDER
- FIVE FLOOR MOUNTED SLIDE-OUT TRAYS IN COMPARTMENTS PER SHOP ORDER
- TWO SWING-OUT ALUMINUM TOOL BOARDS IN COMPARTMENTS PER SHOP ORDER
- FOUR PAC TRAC ON BACK WALL OF COMPARTMENTS PER SHOP ORDER
- STORAGE RACK FOR (6) AIR BOTTLES LOCATED IN COMPARTMENT PER SHOP ORDER
- NON-RAISED AERIAL PEDESTAL
- 1500 GPM HIGH FLOW WATERWAY
- TWO 120V DUPLEX RECEPTACLES LOCATED PER SHOP ORDER

				JOB NO.	34776
				SCALE	1:24
CHASSIS DATA TITLE 107' ASCENDANT AERIAL LADDER AND BODY ASSEMBLY MAKE PIERCE MODEL ENFORCER				DATE	24JAN20
				DRAWN BY	TKA
FOR ELMWOOD PARK FIRE DEPARTMENT ELMWOOD PARK, ILLINOIS				CHECKED BY	CRI
				SHEET SIZE	D
DWG NO. 34776AD				SHEET NO.	1 OF 1
				REV	DATE