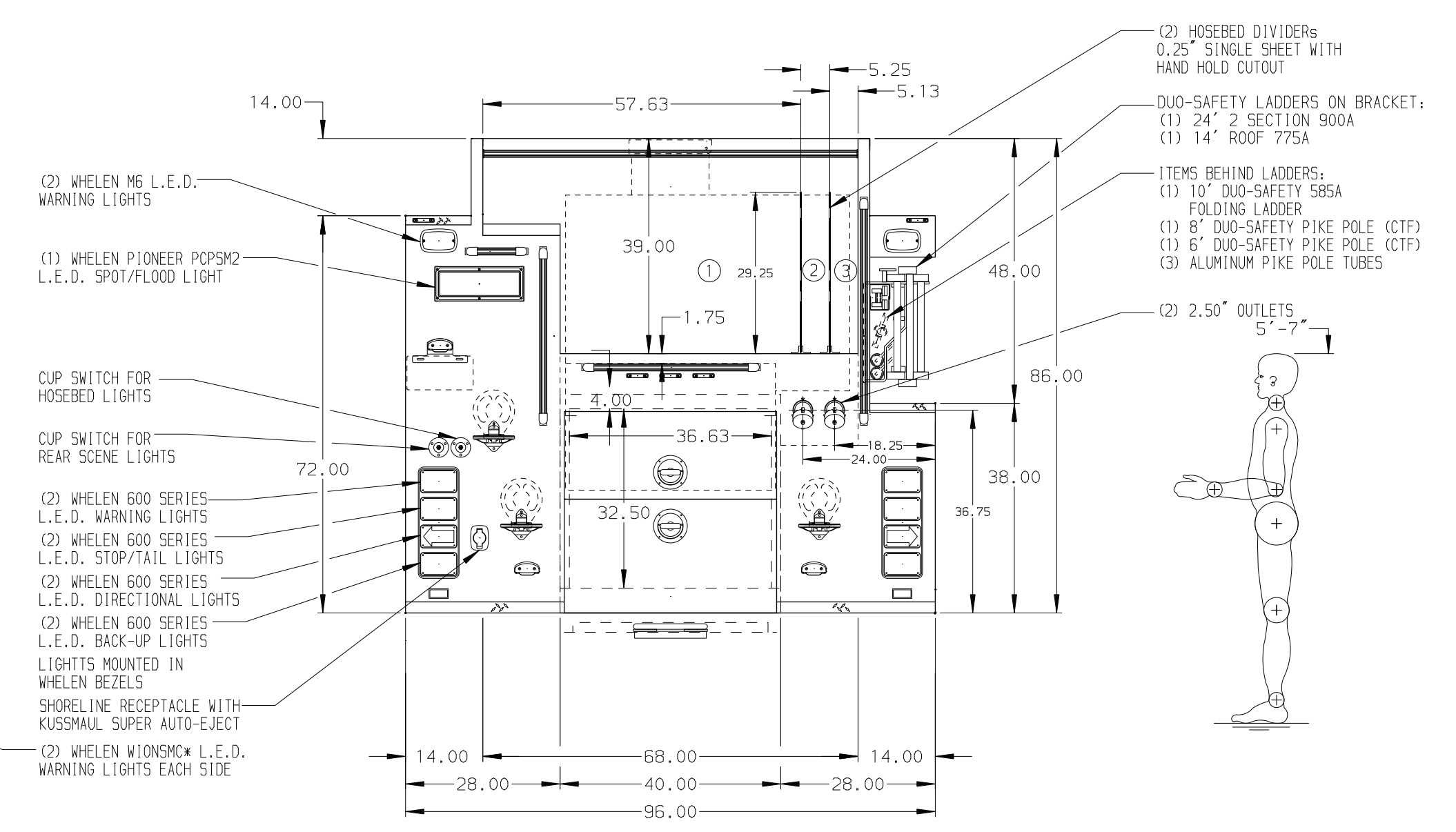
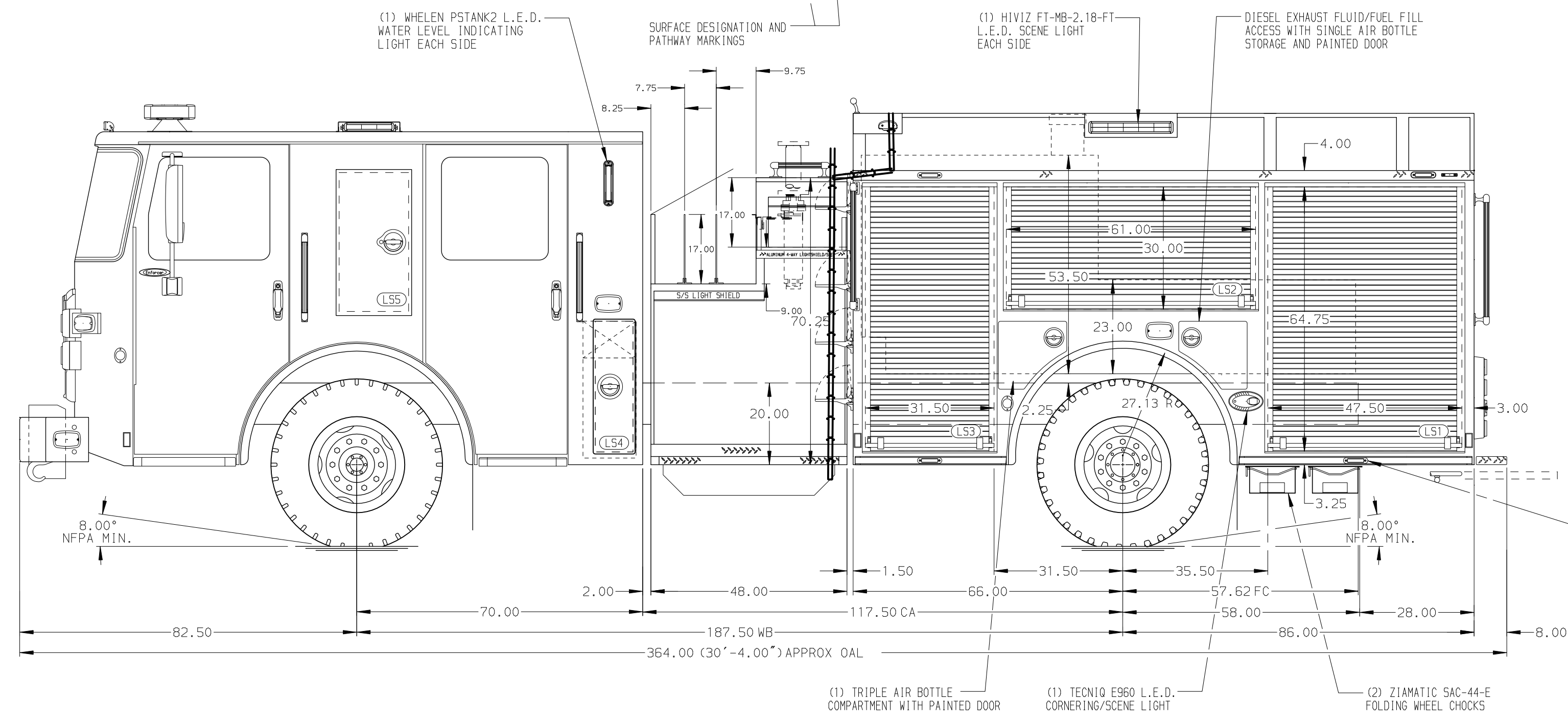


- HOSEBED CAPACITIES
- ① 1000' OF 5.00\"/>



**ALUMINUM BODY**

**NOTE**  
DIMENSIONS SHOWN ARE APPROXIMATE AND ARE SUBJECT TO MINOR DEVIATIONS AS MAY OCCUR OR BE NECESSARY IN CONSTRUCTION. MINOR DETAILS NOT SHOWN.

1. ONSPOT AUTOMATIC TIRE CHAINS TO BE PROVIDED AT REAR
2. VOBEL LUBE SYSTEM PUMP LOCATED PER SHOP ORDER
3. BATTERY CHARGER/COMPRESSOR LOCATED IN COMPARTMENT LS3
4. BATTERY CHARGE INDICATOR LOCATED ON DRIVER'S SEAT RISER
5. DUAL L.E.D. LIGHT STRIPS LOCATED IN HOSE BED
6. DRIP PAN GUARD FOR ROLL-UP DOOR LOCATED ON ALL ROLL-UP DOORS
7. ONE FULL WIDTH/DEPTH ADJUSTABLE SHELF IN COMPARTMENTS LS3, B1, AND RS2 AND THREE IN LS1
8. ONE ADJUSTABLE TILTING SLIDE-OUT TRAY 1/2 TRANSVERSE DEPTH IN COMPARTMENT LS2
9. ONE FLOOR MOUNTED SLIDE-OUT TRAY IN COMPARTMENT B1
10. SLIDE-OUT TOOL BOARD WITH PEGBOARD PATTERN IN COMPARTMENT LS1
11. CTECH DRAWER ASSEMBLY IN COMPARTMENT LS3
12. ONE VERTICAL PEGBOARD PARTITION IN COMPARTMENT LS1
13. AIR OUTLET WITH SHUT OFF VALVE LOCATED ON THE LS PUMP PANEL

REV	DATE	BY	CH	ENFORCER
1	10JUN20	LST	LPA	CHASSIS DATA
2	30MAR20	LST	LPA	MAKE
3	28FEB20	LST	LPA	PIERCE
4	23JAN20	KLE	CDU	MODEL

		JOB NO.	34727
		SCALE	DATE
TITLE	1500-D-750G TANK, 152\"/>	DRAWN BY	KLE
FOR	NEWPORT FIRE DEPT NEWPORT, KENTUCKY	CHECKED BY	CDU
DWG NO.	34727AD	SHEET SIZE	SHEET NO.
		D	1 OF 1