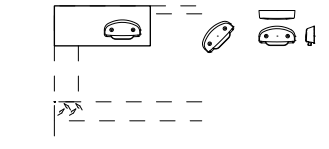
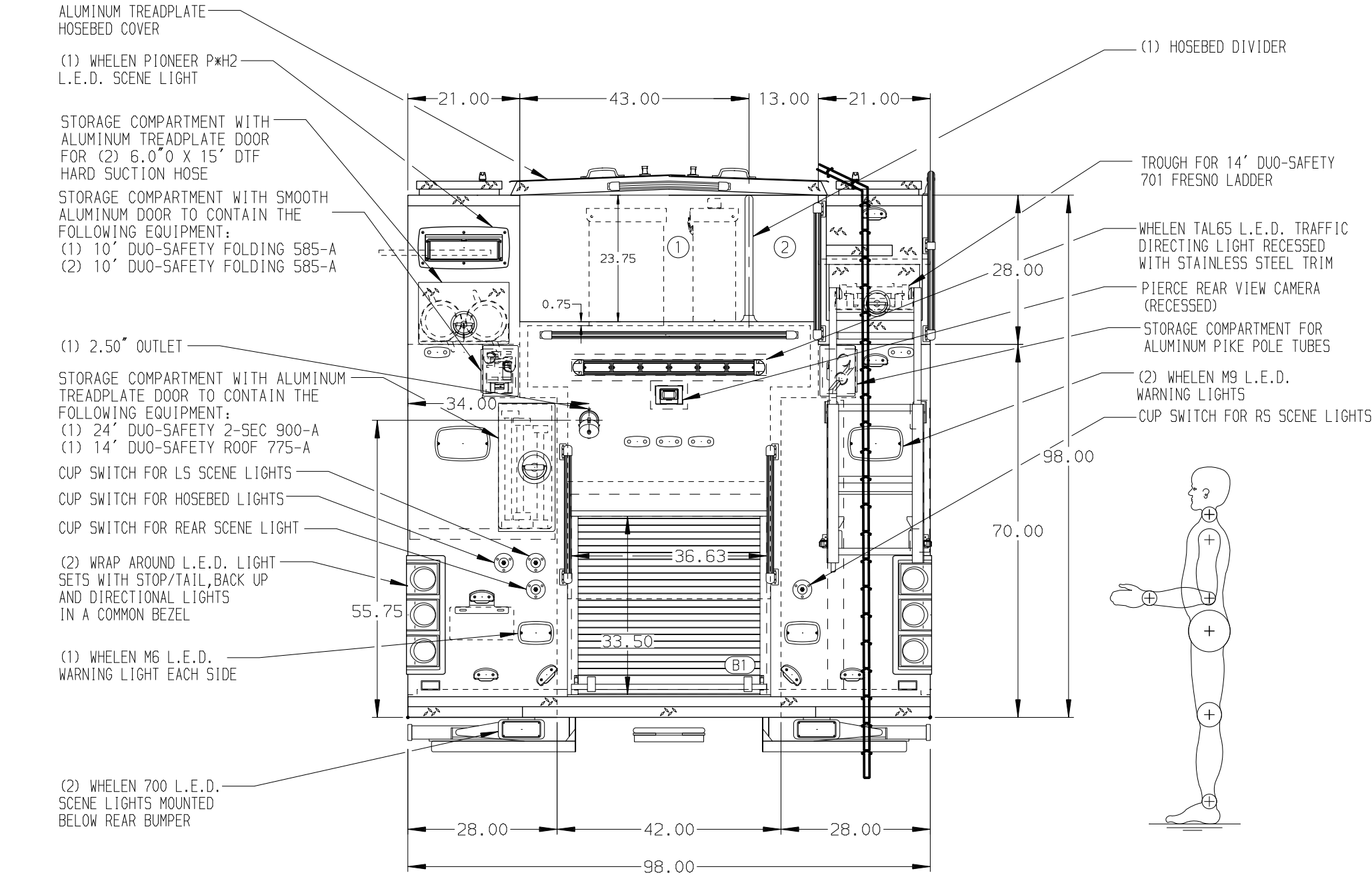
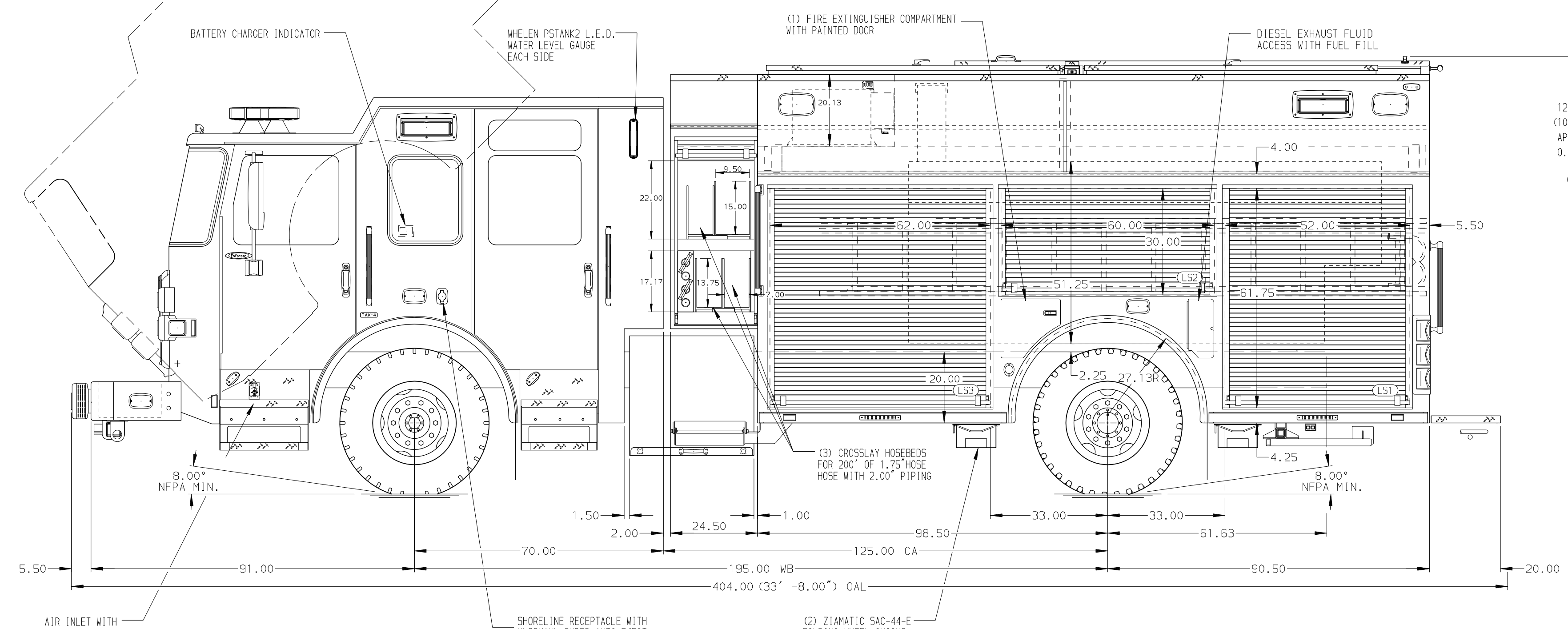
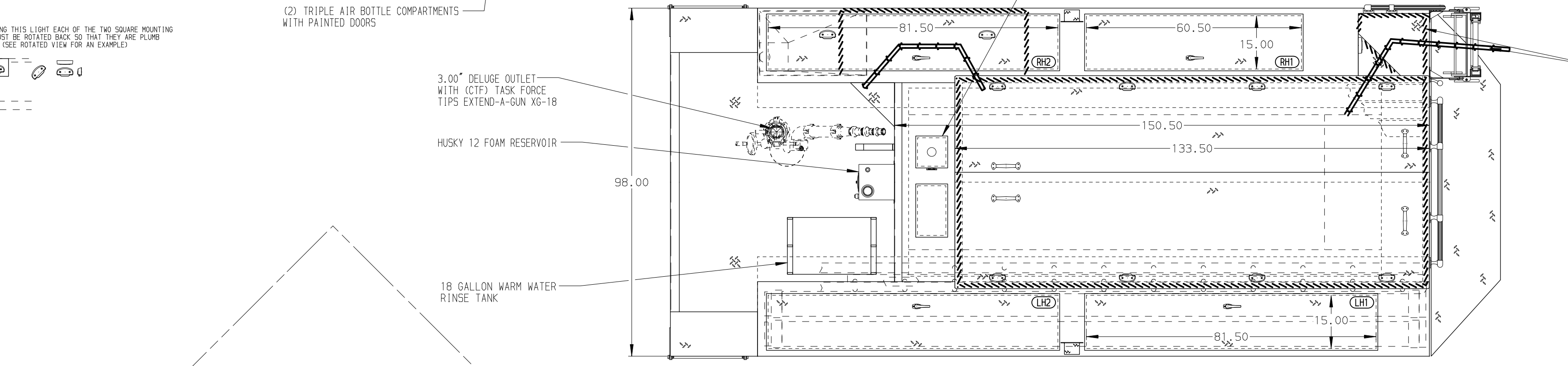


WHEN ROTATING THIS LIGHT EACH OF THE TWO SQUARE MOUNTING HOLES MUST BE ROTATED BACK SO THAT THEY ARE PLUMB (SEE ROTATED VIEW FOR AN EXAMPLE)



HOSEBED CAPACITIES
 ① 1200' OF 5.00" RUBBER HOSE
 ② 600' OF 3.00" D.J. POLY HOSE



ALUMINUM BODY O.A.H. TARGET 128.00" SIDE ROLL AND FRONTAL IMPACT PROTECTION

NOTE
 DIMENSIONS SHOWN ARE APPROXIMATE AND ARE SUBJECT TO MINOR DEVIATIONS AS MAY OCCUR OR BE NECESSARY IN CONSTRUCTION.
 MINOR DETAILS NOT SHOWN.

- BATTERY CHARGER/COMPRESSOR LOCATED BEHIND DRIVER'S SEAT
- DUAL L.E.D. LIGHT STRIPS LOCATED IN HOSE BED
- ONE FULL WIDTH/DEPTH ADJUSTABLE SHELF IN COMPARTMENTS LS3 AND B1; THREE IN LS1; FOUR IN RS3
- ONE ADJUSTABLE SLIDE-OUT TRAY IN COMPARTMENTS RS1 AND RS3
- ONE ADJUSTABLE TILTING SLIDE-OUT TRAY IN COMPARTMENTS RS1 AND RS3
- ONE FLOOR MOUNTED SLIDE-OUT TRAY IN COMPARTMENTS LS1, LS3, RS1, AND B1
- THREE SWING-OUT ALUMINUM TOOL BOARD IN COMPARTMENTS (1) IN THE RS2 AND (2) IN THE LS2
- CTECH DRAINER ASSEMBLY IN COMPARTMENT RS3
- (2) ADDITIONAL POLY TRAYS SHIPPED LOOSE
- AIR OUTLET WITH SHUT OFF VALVE ON THE LEFT SIDE PUMP PANEL
- PEGBORD SIDE WALLS OF COMPARTMENT LS3
- BACK WALL MOUNTED PEGBORD IN COMPARTMENT LS2 AND LS3

REV	DATE	BY	CH	ENFORCER
07APR20	JAJ	LPA		PIERCE
05MAR20	KLE	LPA		MODEL

		JOB NO.	34717
		SCALE	DATE
TITLE 1500-D-1000 WATER/30 FOAM, 189" BODY, CROSSLAYS LADDERS THRU BODY, DELUGE, FOAM SYSTEM MAKE PIERCE FOR CELINA FIRE DEPARTMENT CELINA, OHIO	DRAWN BY	KLE	14JAN20
	CHECKED BY	CDU	16JAN20
DWG NO.	34717AD		SHEET NO.
	D		1 OF 1