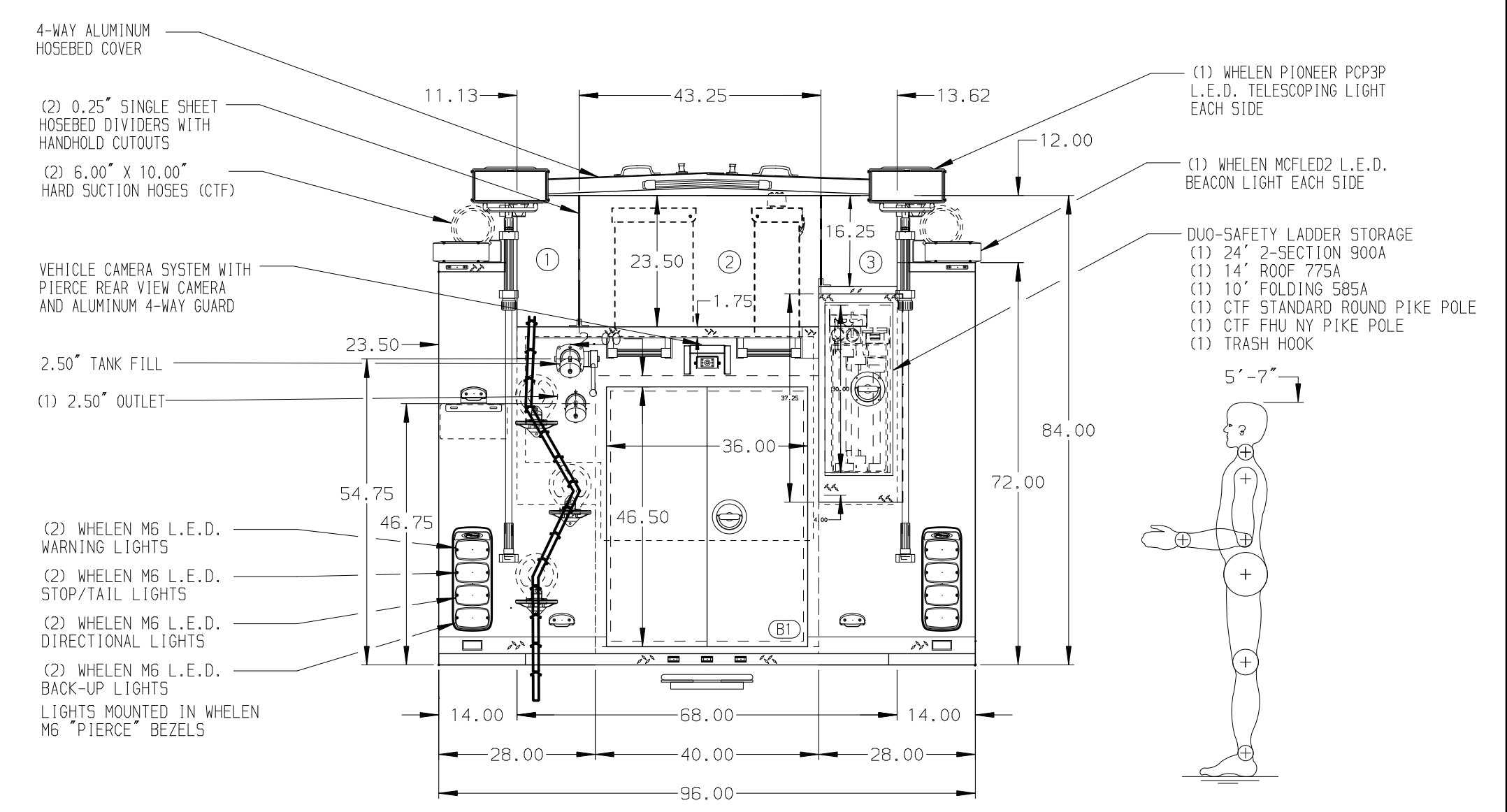


- HOSEBED CAPACITIES
- ① 400' OF 3.00" HOSE
 - ② 1000' OF 5.00" HOSE
 - ③ 400' OF 2.50" HOSE



ALUMINUM BODY

NOTE
DIMENSIONS SHOWN ARE APPROXIMATE AND ARE SUBJECT TO MINOR DEVIATIONS AS MAY OCCUR OR BE NECESSARY IN CONSTRUCTION. MINOR DETAILS NOT SHOWN.

1. AIR INLET/OUTLET LOCATED IN DS STEP WELL
2. SHORELINE RECEPTACLE WITH KUSMAUL SUPER AUTO-EJECT LOCATED IN DS STEP WELL
3. BATTERY CHARGER LOCATED IN COMPARTMENT L53
4. BATTERY CHARGE INDICATOR LOCATED ON DRIVER'S SEAT RISER
5. ONE ADJUSTABLE FULL WIDTH/DEPTH SHELF IN COMPARTMENT L53, R51, B1, TWO IN L51 & R51
6. ONE FLOOR MOUNTED SLIDE-OUT TRAY IN COMPARTMENT R51 & B1
7. FOAM PRO 1500 SINGLE AGENT FOAM SYSTEM LOCATED PER SHOP ORDER
8. ONE ALUMINUM SWING OUT TOOLBOARD WITH PEGBOARD IN COMPARTMENT R52
9. PEGBOARD WITH TRACK ON BACK WALL OF COMPARTMENT L52, L53 & R51
10. TWO NEMA DUPLEX RECEPTACLES IN CAB
11. 5/S1L SCUFFPLATES AT CAB DOOR JAMBS

REV	DATE	BY	CH	ENFORCER
13APR20	SHD	PJP		CHASSIS DATA
23MAR20	LME	LPA		MAKE
13MAR20	LME	WKL		PIERCE
13MAR20	LME	LPA		MODEL

		JOB NO.	34714
		SCALE	1:24
TITLE 1500-D-750P W/20 GALLON FOAM CELL, 152" PUMPER BODY (3) CROSSLAYS, DELUGE, LADDERS BTWN BODY & SS FOR IDAHO FALLS FIRE DEPARTMENT IDAHO FALLS, IDAHO	DRAWN BY	LME	08JAN20
	CHECKED BY	WKL	8JAN20
DWG NO.	34714AD		SHEET NO.
		D	1 OF 1