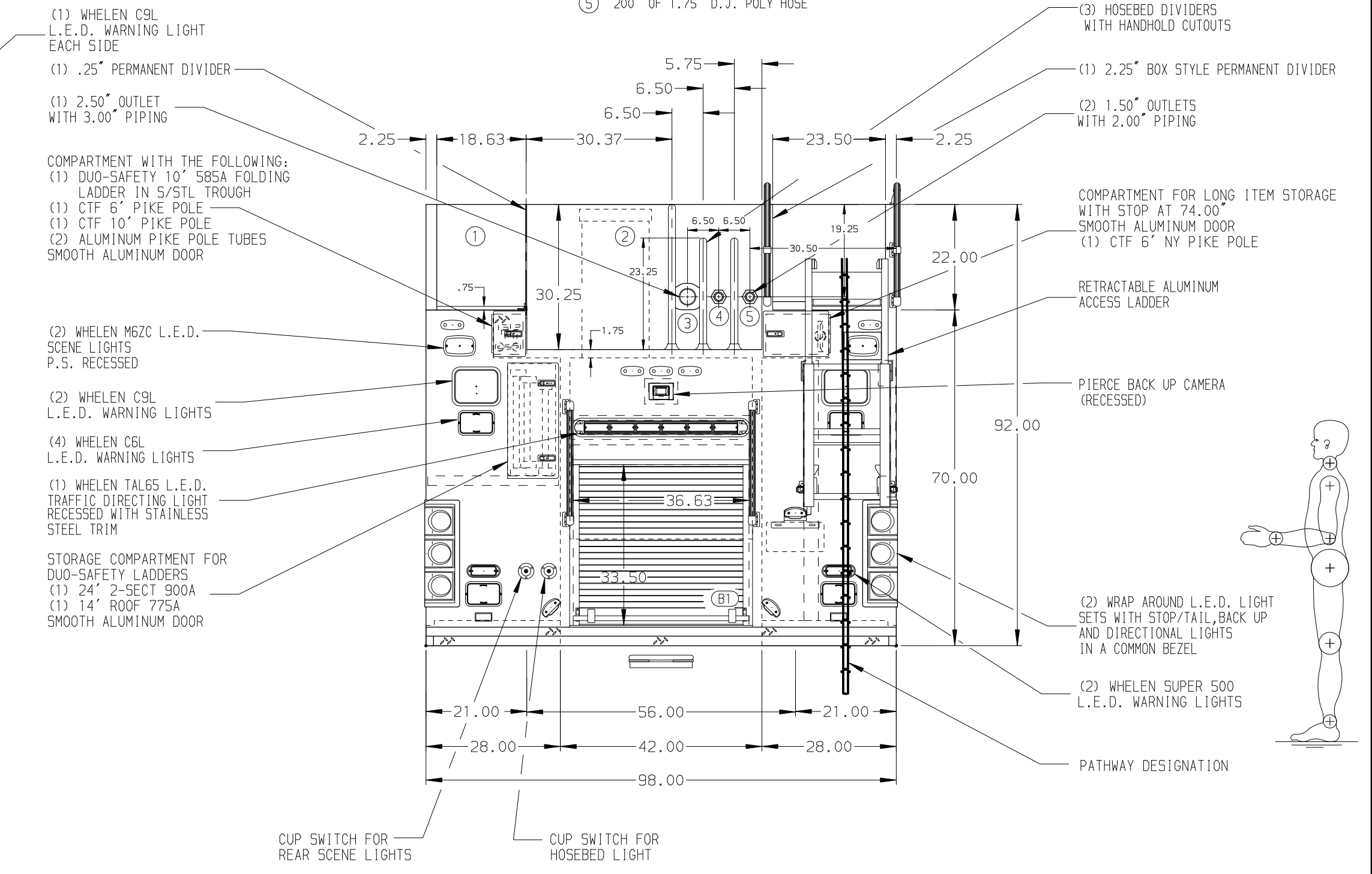
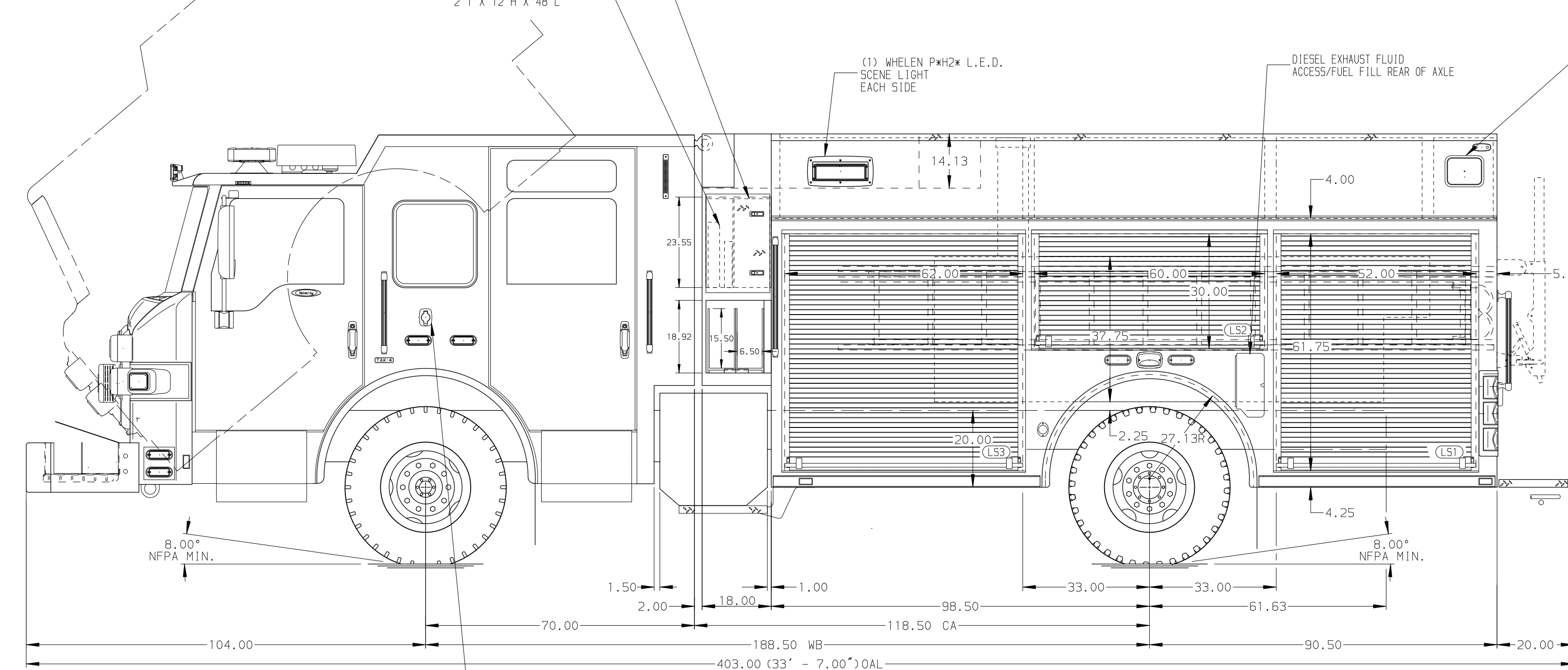


**HOSEBED CAPACITIES**

- 500' OF 3.00" D.J. POLY HOSE
- 1000' OF 5.00" D.J. POLY HOSE
- 200' OF 2.50" D.J. POLY HOSE
- 200' OF 1.75" D.J. POLY HOSE
- 200' OF 1.75" D.J. POLY HOSE



**ALUMINUM BODY**

**FRONTAL IMPACT PROTECTION**

**NOTE**  
 DIMENSIONS SHOWN ARE APPROXIMATE AND ARE SUBJECT TO MINOR DEVIATIONS AS MAY OCCUR OR BE NECESSARY IN CONSTRUCTION.  
 MINOR DETAILS NOT SHOWN.

- CTF WHEEL CHOCKS AND MOUNTING BRACKETS
- ALUMINUM TREADPLATE EXTERIOR REAR WALL OF CAB
- BATTERY CHARGER LOCATED IN RS2
- BATTERY CHARGER INDICATOR LOCATED ON DRIVER'S SIDE SEAT WITH BRACKET
- WHELEN 70COELZR L.E.D. LIGHT LOCATED AT THE FRONT OF THE HOSE BED & CROSS DIVIDER
- ONE ADJUSTABLE FULL WIDTH/FULL DEPTH SHELF IN COMPARTMENTS LS1, RS3 AND B1
- TWO ADJUSTABLE FULL WIDTH/FULL DEPTH SHELVES IN COMPARTMENT LS3
- ONE FIXED FULL WIDTH/DEPTH SHELF IN COMPARTMENT RS1
- ONE ADJUSTABLE TILTING SLIDE-OUT TRAY WITH CABLE RELEASE IATS IN COMPARTMENT RS2
- ONE SWING-OUT ALUMINUM TOOL BOARD IN COMPARTMENT LS2

- TWO FLOOR MOUNTED SLIDE-OUT TRAYS IN COMPARTMENT RS1
- ONE ADJUSTABLE FULL WIDTH/DEPTH 2.00" HIGH SHELF IN RS3
- ONE ALUMINUM PEG BOARD TOOLBOARD ADDED TO EACH SLIDE-OUT TRAY IN COMPARTMENT RS1
- (1) 120V DUPLEX RECEPTACLE LOCATED IN EMS CABINET AND ON THE REAR FACING WALL OF THE ENGINE TUNNEL
- AIR INLET/OUTLET WITH DISCONNECT COUPLING ON D.S. PUMP PANEL
- AMOR LUMBAR H20 L.E.D. LIGHT STRIPS IN HOSEBED WALKWAY
- FOUR SGBA Z100 BRACKETS LOCATED IN COMPARTMENT RS1

		JOB NO.	34689
		SCALE	DATE
TITLE	1500-D-650P, 189, FULL HEIGHT, FULL DEPTH D.S. & P.S. (2) BUMPER X-LAYS, NO HATCH COMPARTMENTS	DRAWN BY	AMI
FOR	CITY OF LARGO LARGO, FLORIDA	CHECKED BY	KOU
DWG NO.	34689AD	SHEET SIZE	SHEET NO.
REV	DATE	BY	CH

REV	DATE	BY	CH	VELOCITY
31AUG20	SAM	PPE		CHASSIS DATA
27APR20	SAM	PPE		MAKE
01APR20	AMI	PPE		PIERCE
17JAN20	AMI	NPE		MODEL