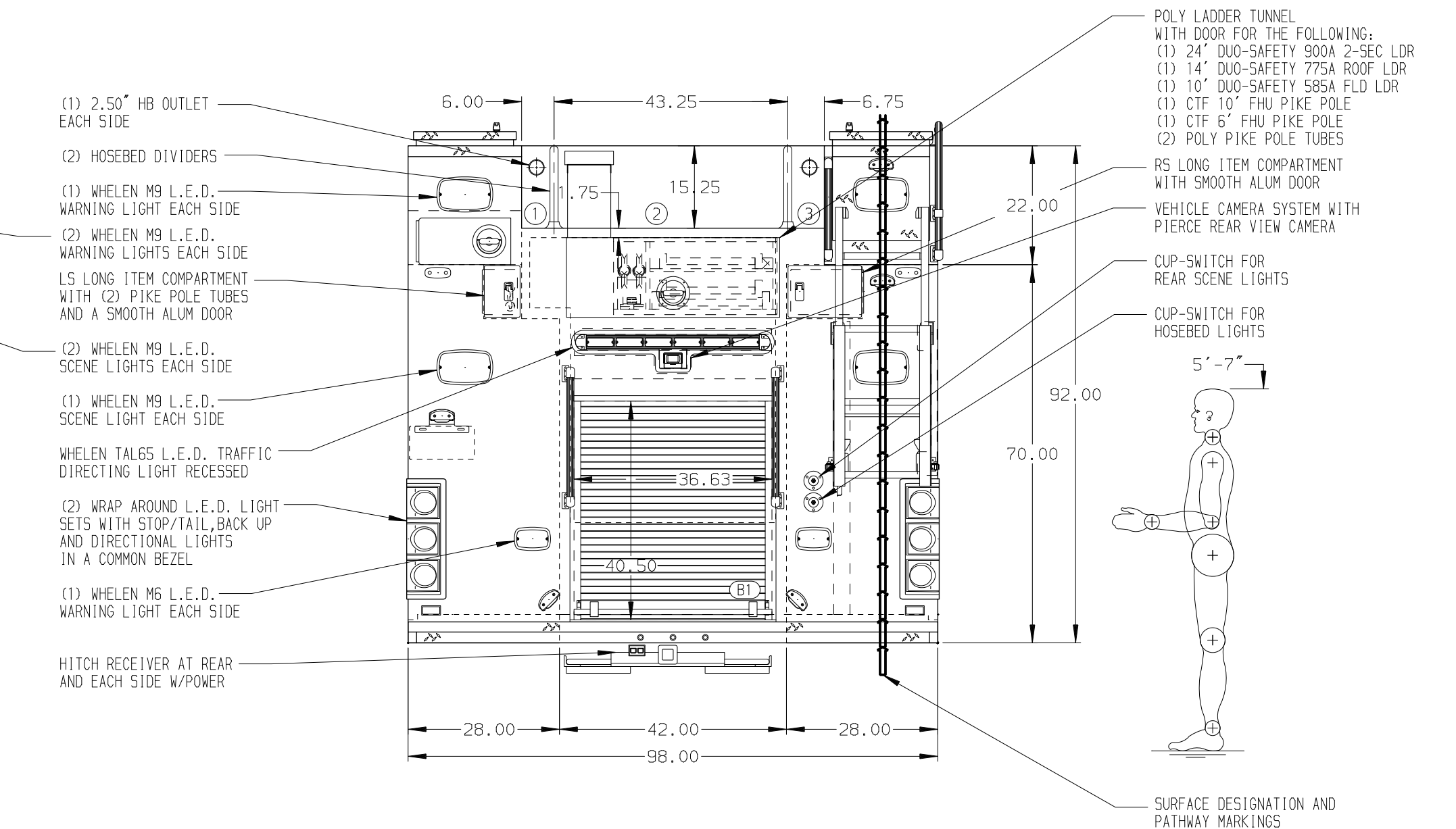


**HOSEBED CAPACITIES**

①	- 200' OF 2.50" D.J. POLY HOSE
②	- 1000' OF 5.00" D.J. POLY HOSE
③	- 200' OF 3.00" D.J. POLY HOSE



**ALUMINUM BODY**

**NOTE**  
DIMENSIONS SHOWN ARE APPROXIMATE AND ARE SUBJECT TO MINOR DEVIATIONS AS MAY OCCUR OR BE NECESSARY IN CONSTRUCTION. MINOR DETAILS NOT SHOWN.

- AIR INLET WITH DISCONNECT COUPLING LOCATED ON DRIVER'S SIDE STEP WELL
- VOGEL LUBE SYSTEM PUMP LOCATED IN PUMP/PLUMBING AREA UNDER THE CARGO FLOOR
- BATTERY CHARGER LOCATED IN PUMP/PLUMBING AREA
- BATTERY CHARGE INDICATOR LOCATED ON DRIVER'S SEAT RISER
- DUAL L.E.D. LIGHT STRIPS LOCATED IN HOSE BED
- ONE FULL WIDTH/DEPTH ADJUSTABLE SHELF IN COMPARTMENT B1, TWO IN R51
- TWO ADJUSTABLE SLIDE-OUT TRAYS IN COMPARTMENT L51 & R53
- ONE ADJUSTABLE TILTING SLIDE-OUT TRAY IN COMPARTMENT L51, L52, R52 & R53
- ONE FLOOR MOUNTED SLIDE-OUT TRAY IN COMPARTMENT B1
- ONE FLOOR MOUNTED FLAT TOP SLIDE-OUT TRAY IN COMPARTMENT R51
- TWO SLIDE-OUT TOOL BOARDS WITH PEGBOARD PATTERN IN COMPARTMENT L53
- ONE HORIZONTAL PARTITION IN COMPARTMENT R51
- 2.50" PUMP OPERATOR COMPARTMENT PARTITION
- PARTITION BETWEEN COMPARTMENTS L51/B1 AND R51/B1
- TWO VERTICAL PARTITION IN EACH HATCH COMPARTMENT
- ONE PERMANENTLY MOUNTED INVERTED SHELF IN COMPARTMENT R51
- ONE VERTICAL PARTITION IN COMPARTMENT R51
- CIRCUIT BREAKER PANEL IN COMPARTMENT L53

		JOB NO.	34675
		SCALE	DATE
<b>1500-D-750P 189" RESCUE PUC BODY, (2)CROSSLAYS DELUGE, LADDER TUNNEL, LIGHT TOWER, FRONT RECEIVER</b>		DRAWN BY	07JAN20
<b>ORANGE CITY FIRE DEPARTMENT</b>		CHECKED BY	8JAN20
<b>ORANGE CITY, FLORIDA</b>		SHEET SIZE	SHEET NO.
<b>DWG NO. 34675AD</b>		<b>1 OF 1</b>	

REV	DATE	BY	CH	ENFORCER
05JUN20		SAM	PPE	MAKE
09APR20		SAM	PPE	PIERCE
06MAR20		AMI	PPE	MODEL