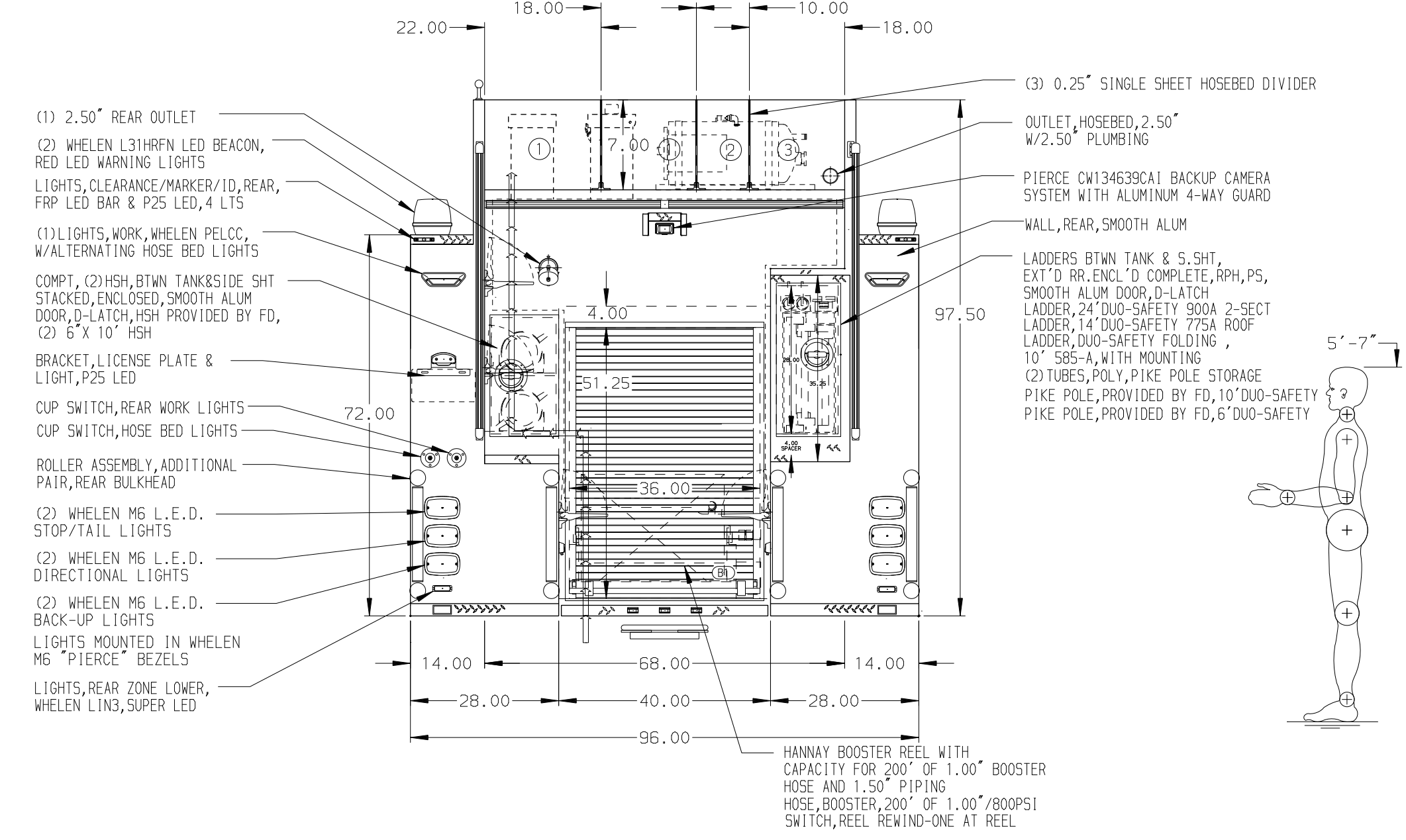
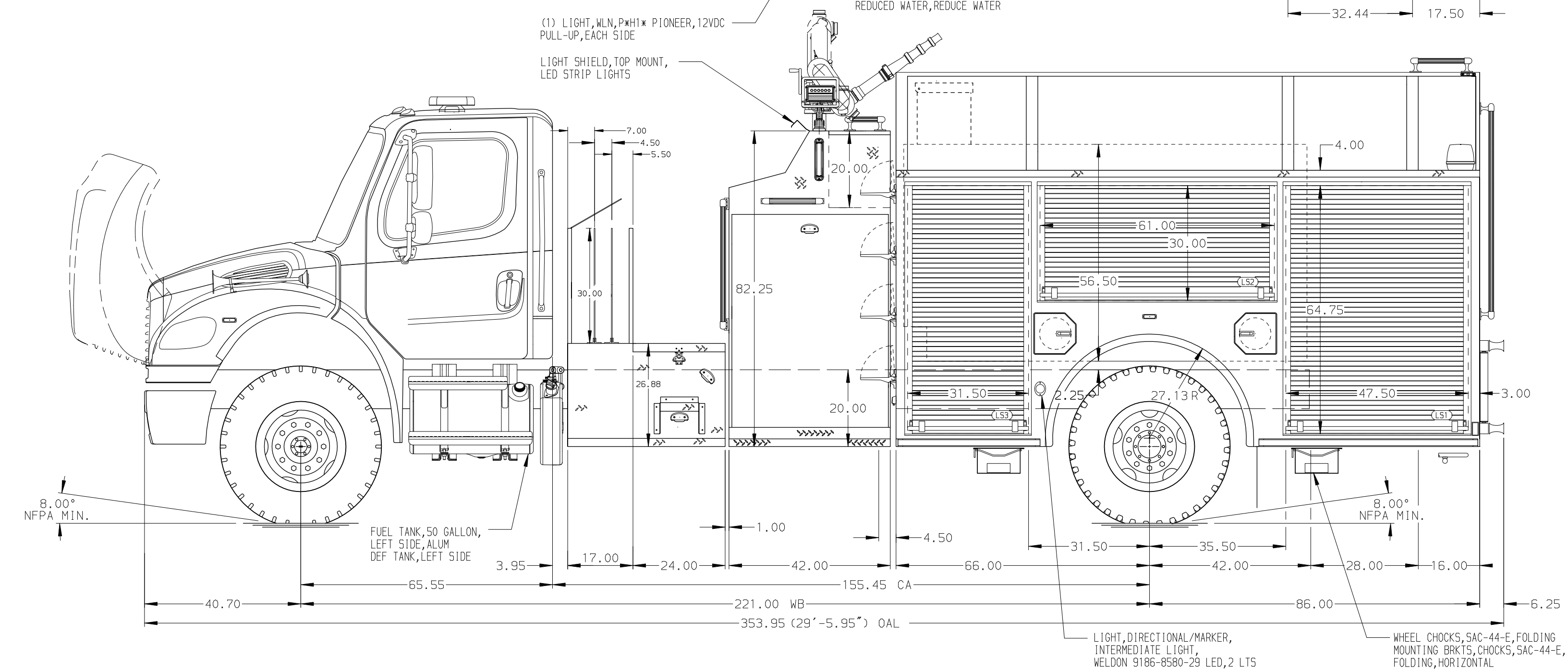


- HOSEBED CAPACITIES
- ① 1200' OF 3.00" D.J. POLY HOSE
  - ② 400' OF 1.50" D.J. POLY HOSE
  - ③ 400' OF 2.50" D.J. POLY HOSE



ALUMINUM BODY

NOTE  
DIMENSIONS SHOWN ARE APPROXIMATE AND ARE SUBJECT TO MINOR DEVIATIONS AS MAY OCCUR OR BE NECESSARY IN CONSTRUCTION. MINOR DETAILS NOT SHOWN.

REV	DATE	BY	CH	CHASSIS DATA
19JUN20	CRH	AJA	MAKE	M2-106
22MAY20	CRH	AJA	FL	
03APR20	JLA	RWI	MODEL	

		JOB NO.	34645
		SCALE	DATE
TITLE	1500-D-1000 POLY, 152" BODY, DS&PS FULL HGT FDLER 42" TOP MOUNT W/24" WALKWAY, (2) 1.5" & (1) 2.5" XLAY SS FRT	DRAWN BY	JLA
FOR	ONALASKA VOLUNTEER FIRE DEPARTMENT ONALASKA, TEXAS	CHECKED BY	RWI
DWG NO.	34645AD	SHEET SIZE	D
		SHEET NO.	1 OF 1