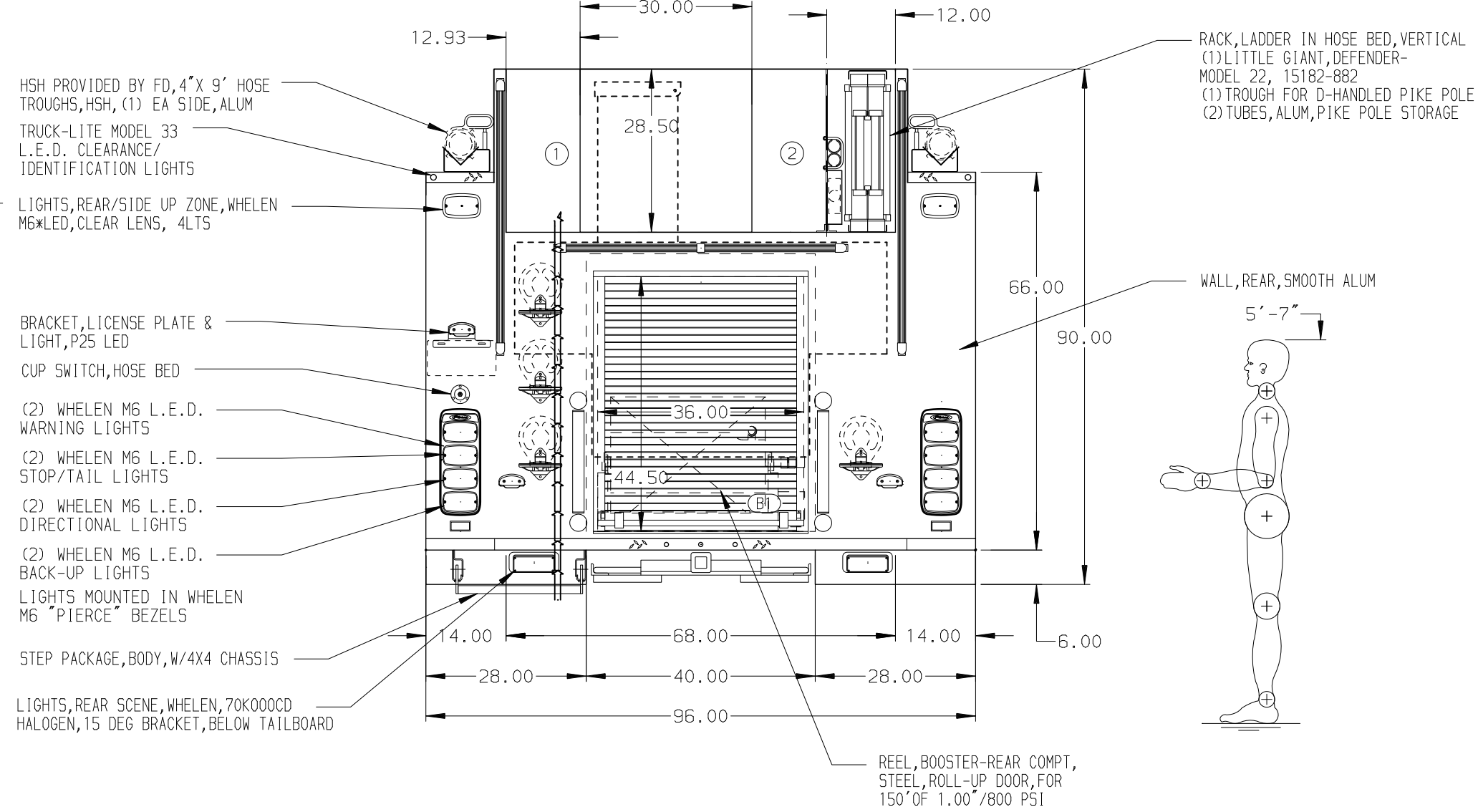
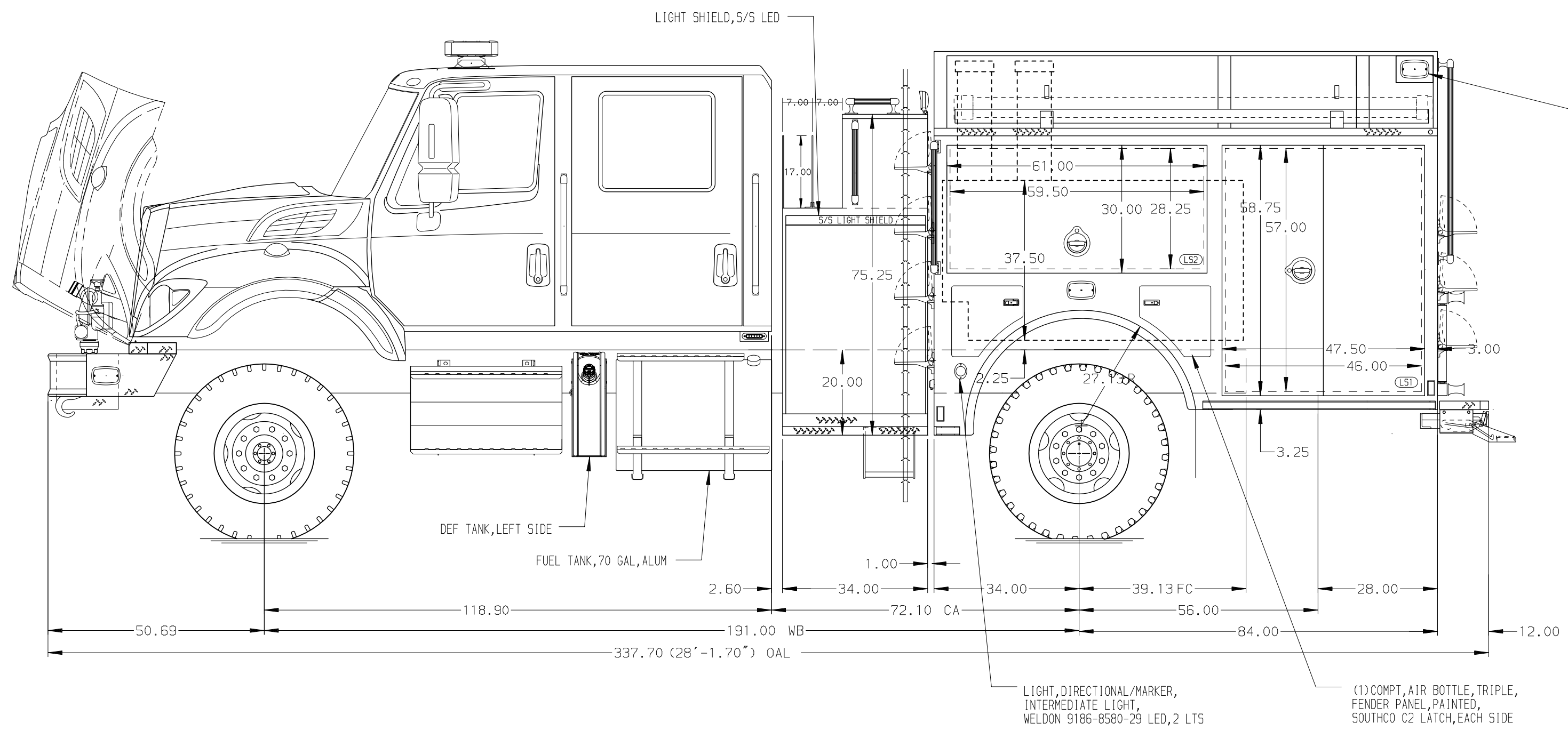


- HOSEBED CAPACITIES
- ① 600' OF 3.00" RUBBER HOSE
 - ② 600' OF 3.00" RUBBER HOSE



NOTE
DIMENSIONS SHOWN ARE APPROXIMATE AND ARE SUBJECT TO MINOR DEVIATIONS AS MAY OCCUR OR BE NECESSARY IN CONSTRUCTION.
MINOR DETAILS NOT SHOWN.

					Pierce MANUFACTURING INC.		JOB NO.	34588
							SCALE	DATE
							1:24	
							DRAWN BY	12FEB20
							JLA	
							CHECKED BY	18FEB20
							RWI	
							SHEET SIZE	SHEET NO.
							D	1 OF 1

TITLE	500-D-500P, 118" SHORT PUMPER, FH RR, FD LER, 6" RAISED RR
FOR	34" SIDE CONTROLS, (2) 1.5" CROSSLAYS
FOR	MISSOULA FIRE DEPARTMENT
FOR	MISSOULA, MONTANA
DWG NO.	34588AD