

PUMPER BODY

Long Aluminum 2nd Gen Pumper

CHASSIS

Enforcer Chassis

CHASSIS AXLE, FRONT, CUSTOM

20,000 Lb Dana Axle

AXLE, REAR

27,000 Lb Dana Axle

ENGINE

470 HP DD13 Engine

TRANSMISSION

Allison 5th Gen, 4000 EVS P

BUMPER

22" Extended Stainless Steel

CAB

7010 Enforcer Cab

BODY WATER TANK

750 Gallon New York Style Water Tank

COMPT, PUMPER, REAR

30.75" FF RollUp Rear Compt

COMPT, PUMPER, DRIVER SIDE

171" RollUp Full Height Front & Rear FDLR

COMPT, PUMPER PASS. SIDE

171" RollUp Full Height Front & Rear FDLR

FIRE SUPPRESSION PUMPHOUSE

45" Control Zone Top Mount

PUMP

1500 GPM Waterous CSU

CROSSLAYS, 1.50"

1.50" Crosslays Not Required

CROSSLAYS, 2.50"

2.50" Crosslays Not Required

SPEEDLAYS

(2) 1.50" Special Capacity

GENERATOR

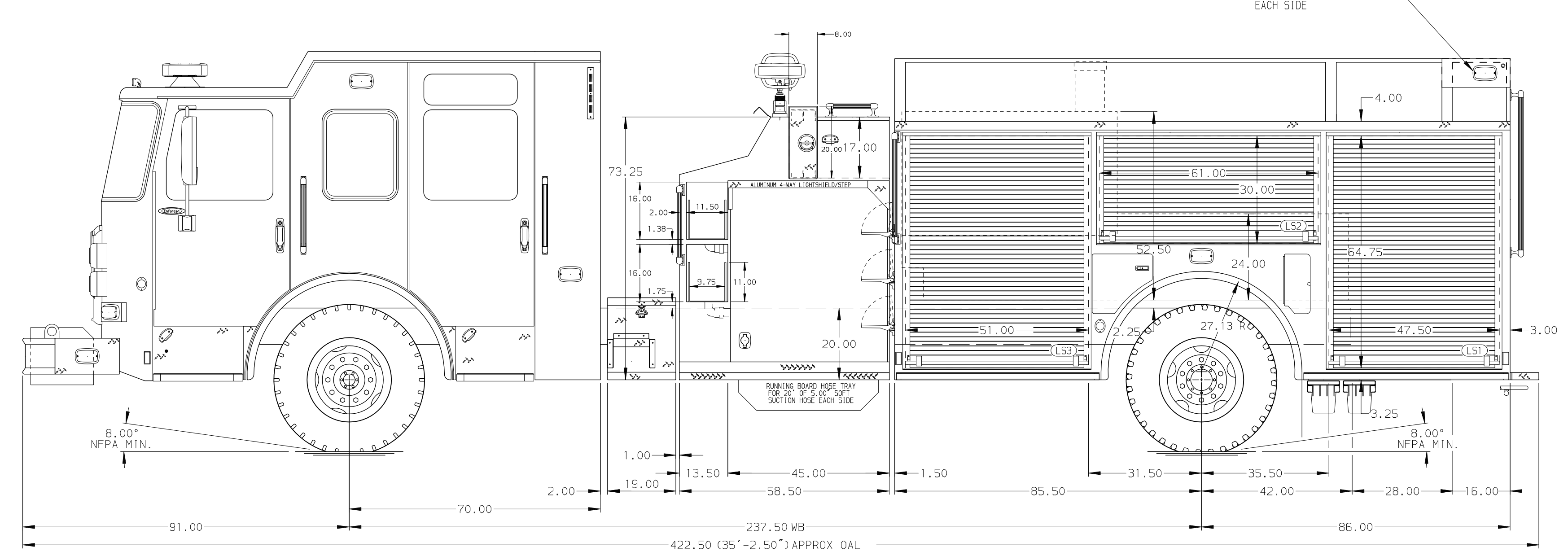
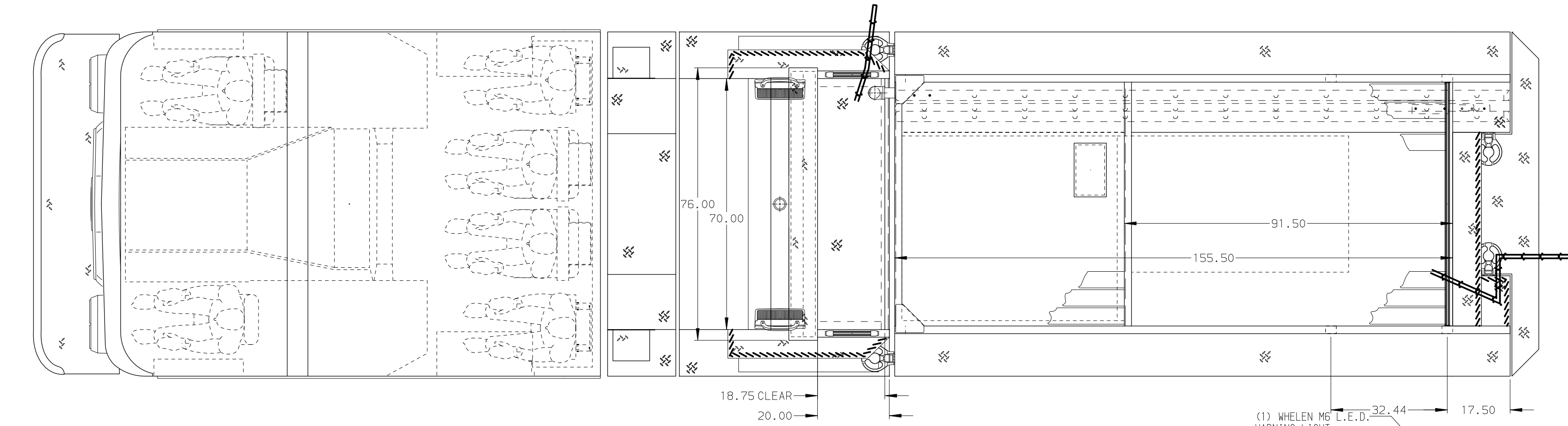
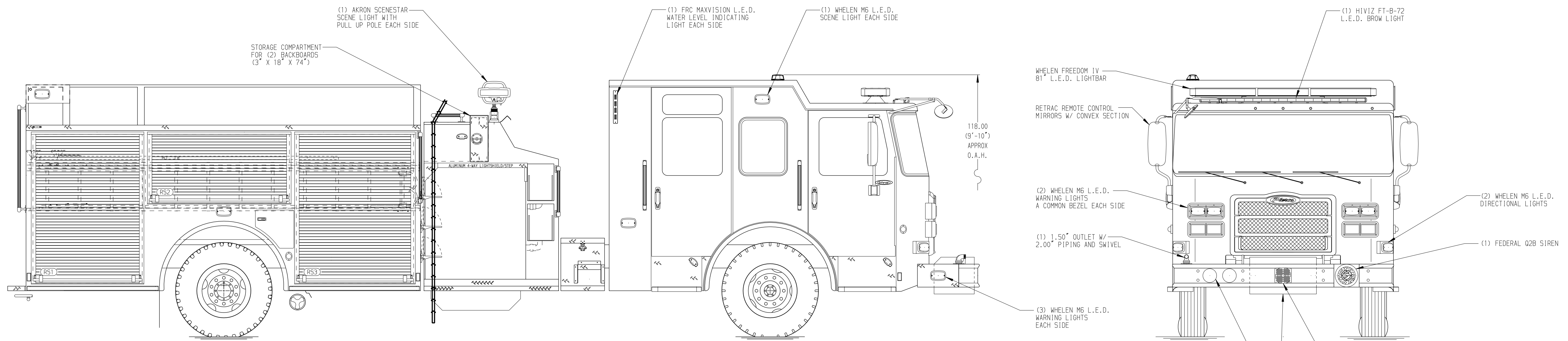
Generator Not Required

Foam System

Foam System Not Required

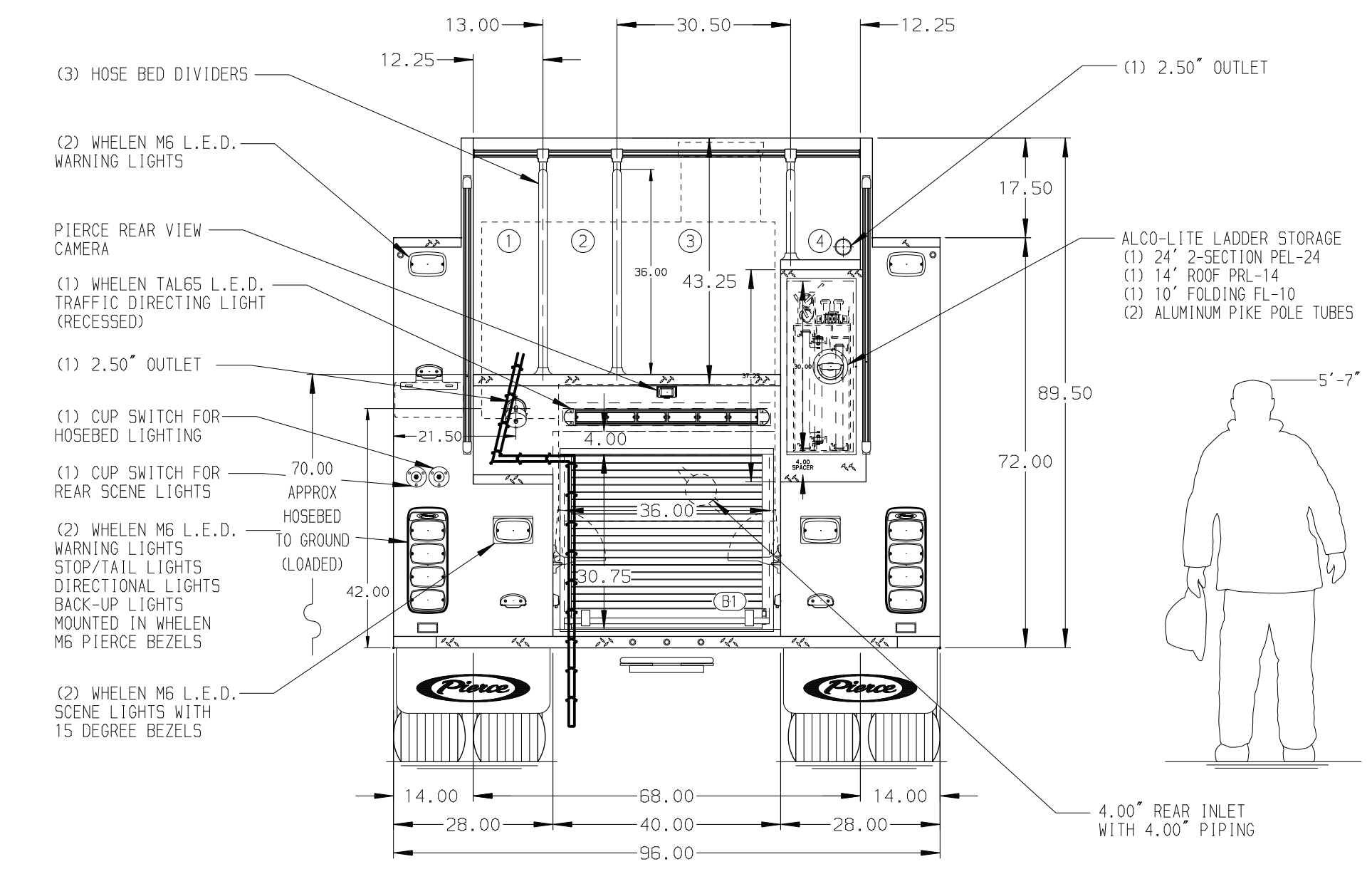
Foam Cell

Foam Cell Not Required



HOSEBED CAPACITY

BED 1	500' OF 3.00" D.J. POLY HOSE
BED 2	500' OF 3.00" D.J. POLY HOSE
BED 3	1000' OF 5.00" D.J. POLY HOSE
BED 4	250' OF 2.50" D.J. POLY HOSE



NOTE
DIMENSIONS SHOWN ARE APPROXIMATE AND ARE SUBJECT TO MINOR DEVIATIONS AS MAY OCCUR OR BE NECESSARY IN CONSTRUCTION. MINOR DETAILS NOT SHOWN.

1. SHORELINE RECEPTACLE WITH KUSSMAUL SUPER AUTO-EJECT LOCATED ON DRIVER SIDE PUMP PANEL
2. AIR INLET WITH DISCONNECT COUPLING IN THE DRIVER SIDE STEPWELL
3. BATTERY CHARGER LOCATED IN COMPARTMENT D3
4. BATTERY CHARGE INDICATOR LOCATED ON THE DRIVER SIDE SEAT RISER
5. SIX ADJUSTABLE SHELVES LOCATED PER SHOP ORDER
6. ONE FLOOR MOUNTED SLIDE-OUT TRAY LOCATED PER SHOP ORDER
7. DUST FILTERS IN COMPARTMENT LOCATED PER SHOP ORDER
8. ONE 120V 4-PLACE RECEPTACLE LOCATED PER SHOP ORDER

REV	DATE	BY	CH	ENFORCER
24	JAN20	COL	JJR	PIERCE
11	DEC19	COL	KBO	MODEL

		JOB NO.	34543
		SCALE	01-03
TITLE	Pierce Pumper Approval Drawing	DRAWN BY	COL
FOR	Augusta Fire Department	CHECKED BY	KBO
DWG NO.	34543AD	SHEET SIZE	D
		SHEET NO.	1 OF 1