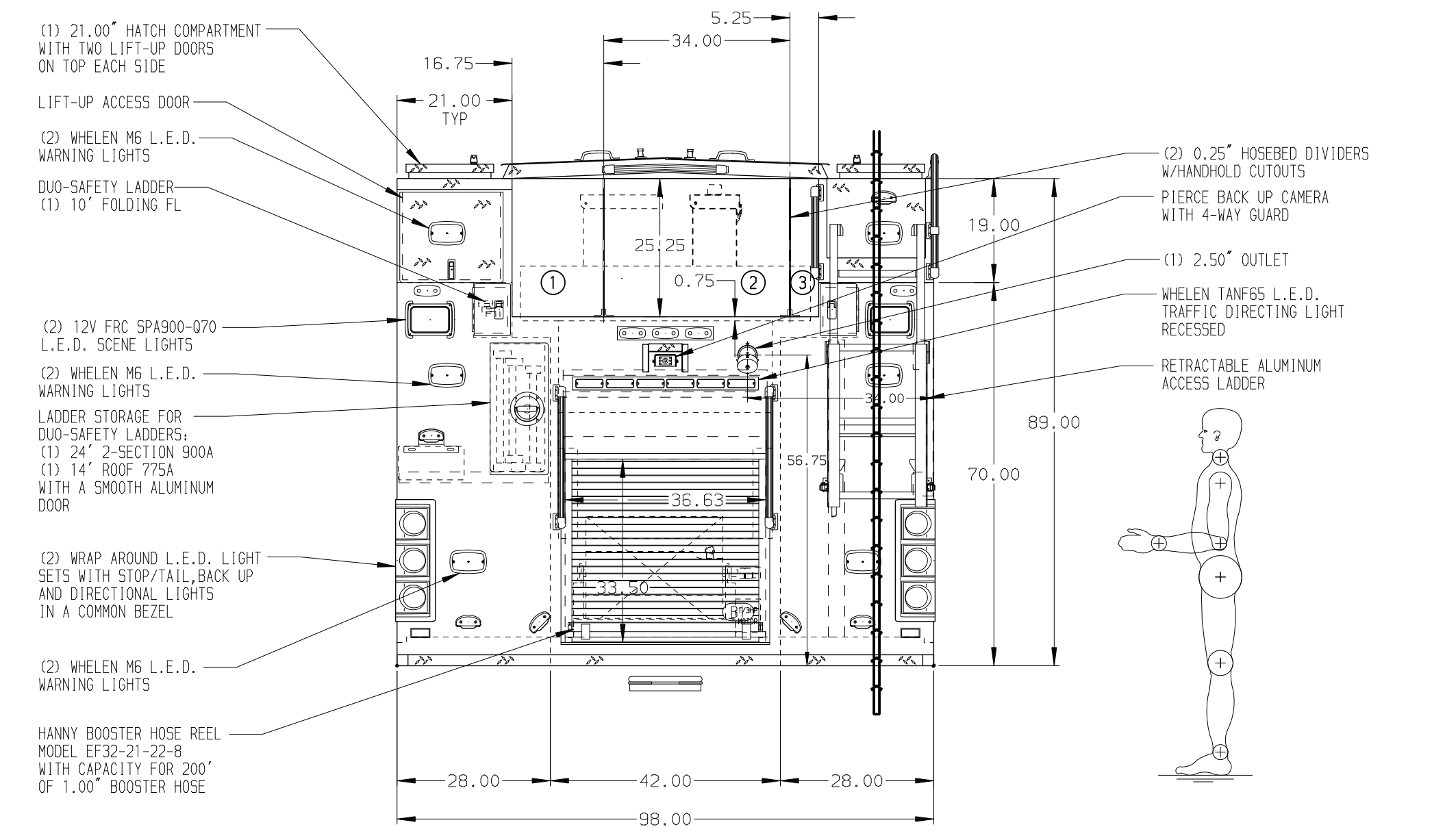
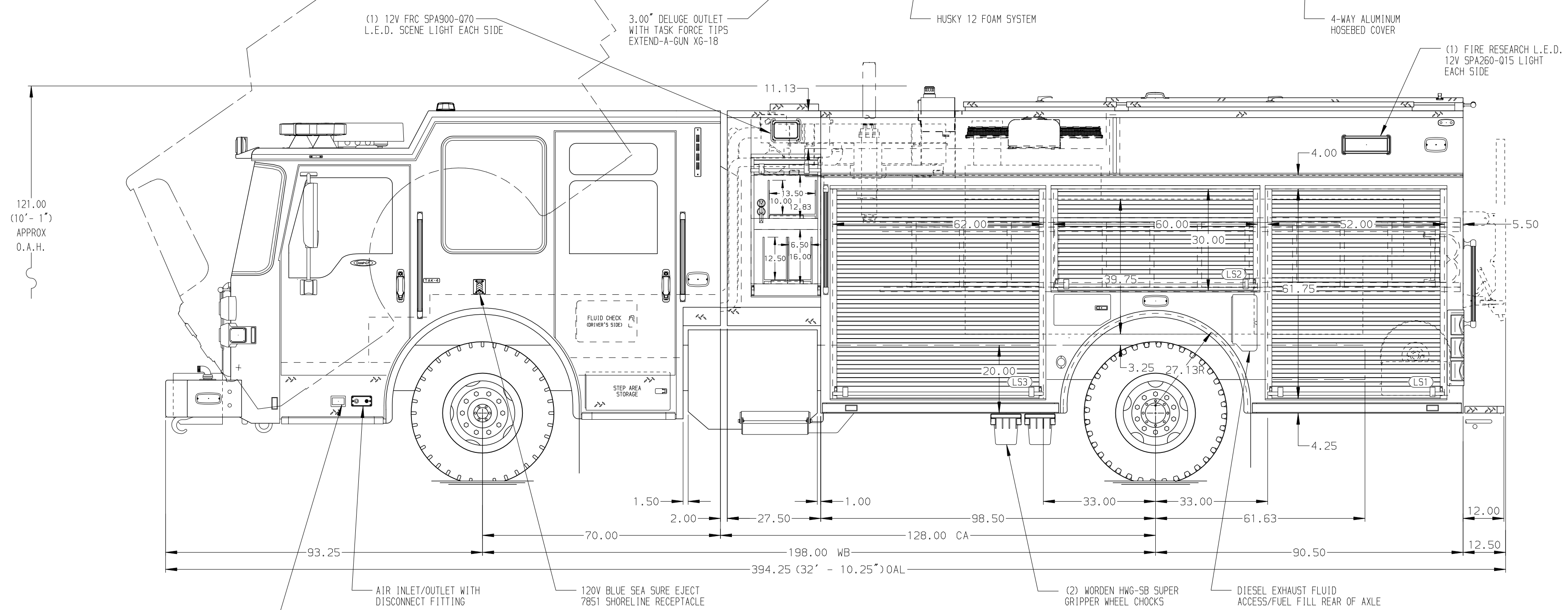


- HOSEBED CAPACITIES
- ① 800' OF 3.00" D.J. HOSE
  - ② 1000' OF 5.00" D.J. HOSE
  - ③ 200' OF 2.50" D.J. HOSE



ALUMINUM BODY

SIDE ROLL & FRONTAL IMPACT PROTECTION

NOTE  
 DIMENSIONS SHOWN ARE APPROXIMATE AND ARE SUBJECT TO MINOR DEVIATIONS AS MAY OCCUR OR BE NECESSARY IN CONSTRUCTION.  
 MINOR DETAILS NOT SHOWN.

1. KUSSMAUL AIR COMPRESSOR LOCATED BEHIND OFFICER'S SEAT
2. ONE FULL WIDTH/DEPTH ADJUSTABLE SHELF IN COMPARTMENT RS1, LS3 & RS3, TWO IN RS1
3. ONE ADJUSTABLE TILTING SLIDE-OUT TRAY IN COMPARTMENT RS3
4. ONE FULL WIDTH/DEPTH FLOOR MOUNTED SLIDE-OUT TRAY IN COMPARTMENT RS1 & RS3
5. ONE SWING-OUT ALUMINUM TOOL BOARD IN COMPARTMENT LS2 & RS2
6. STORAGE FOR LITTLE GIANT REVOLUTION XE 12017-MODEL 17 LADDER IN COMPARTMENT RS3
7. BOLT-IN PARTITION LOCATED BETWEEN COMPARTMENTS LS1/B1 & RS1/B1
8. RETENTION NETTING LOCATED IN COMPARTMENT RS1
9. DRAWER ASSEMBLY LOCATED IN COMPARTMENT LS3
10. ONE ALUMINUM STORAGE TUBE LOCATED IN COMPARTMENT B1

		JOB NO.	34468
		SCALE	DATE
TITLE	1500-D-750P W/20 GAL. FOAM CELL, 189" FH & FD PUC (3) CROSSLAYS, LADDERS THRU BODY, DELUGE	DRAWN BY	AMI
FOR	PARKER COUNTY ESD #3 HUDSON OAKS, TEXAS	CHECKED BY	WKL
DWG NO.	34468AD	SHEET SIZE	SHEET NO.
REV	DATE	BY	CH

REV	DATE	BY	CH	DASH CF
12FEB20	AMI	CW1	MAKE	
10JAN20	AMI	CW1	PIERCE	
06NOV19	AMI	WKL	MODEL	