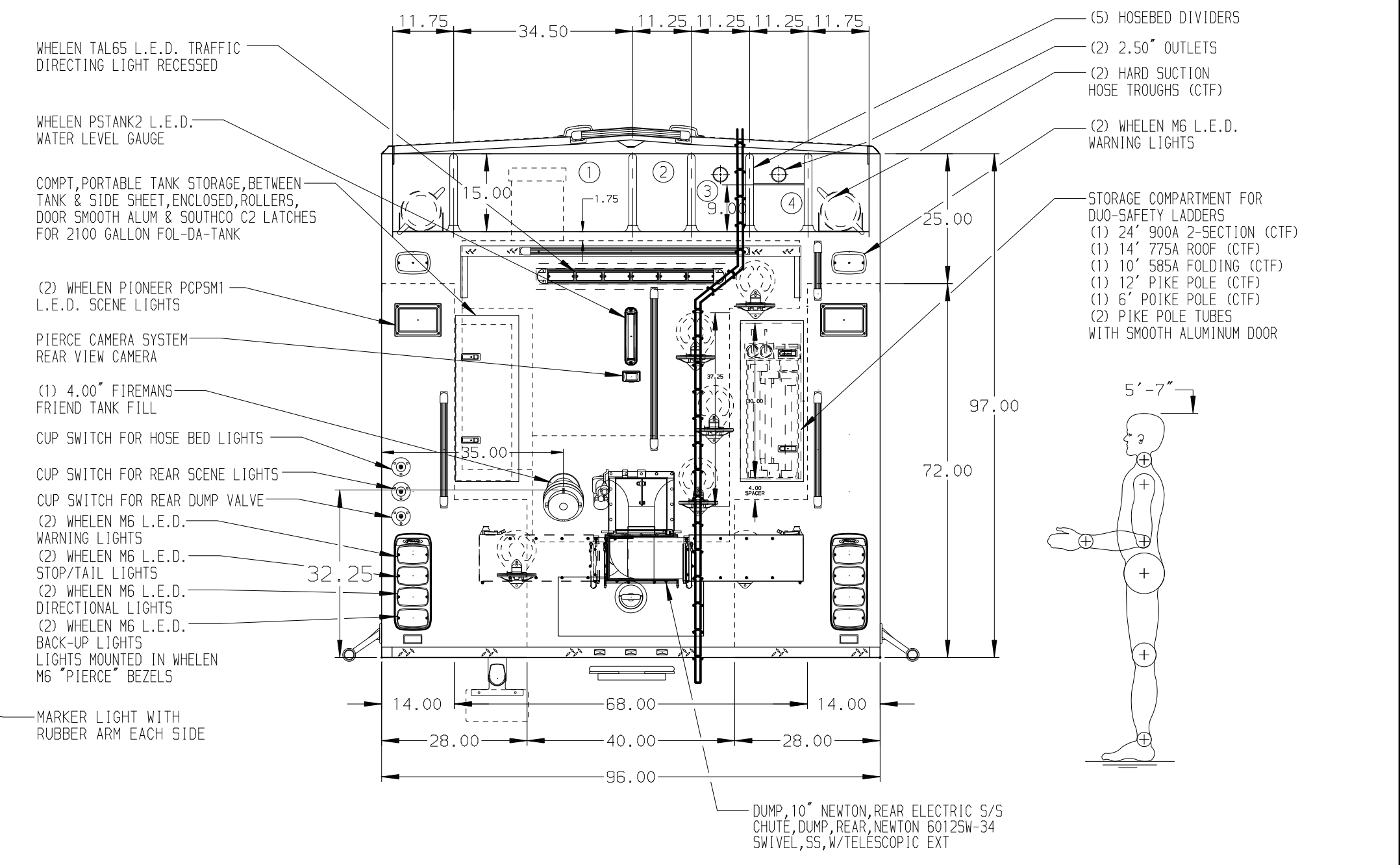
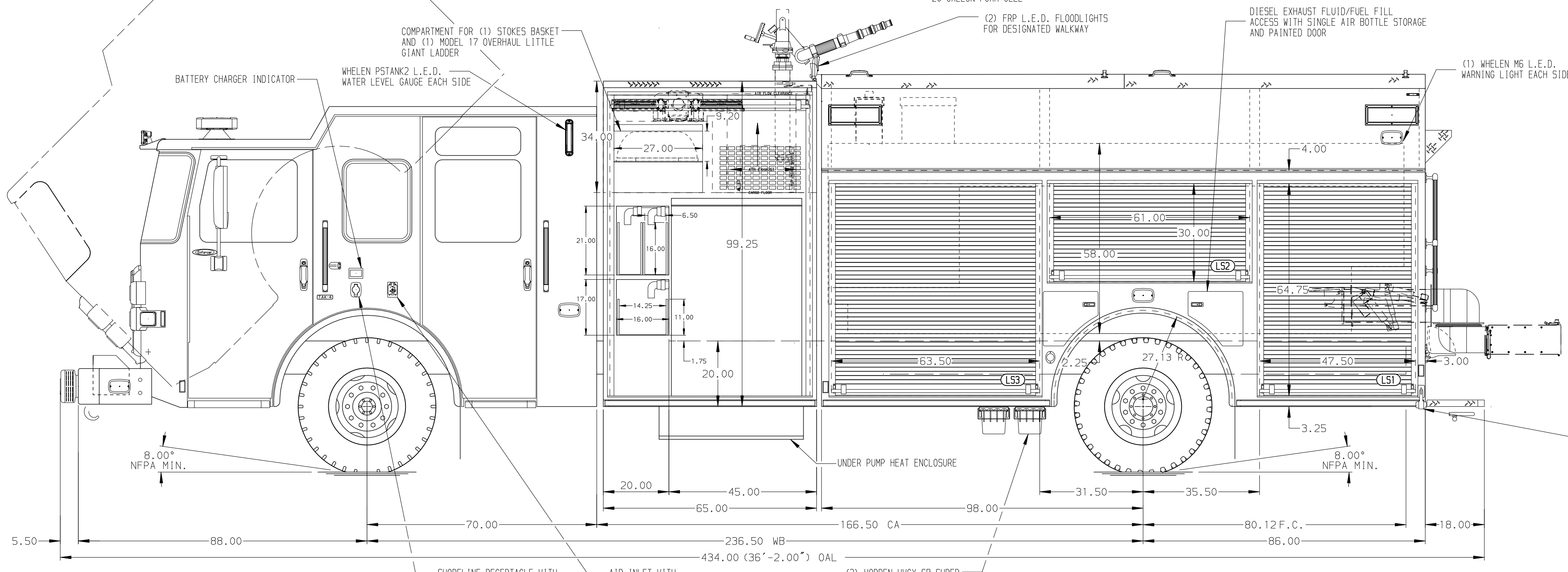


- HOSEBED CAPACITIES**
- ① 700' OF 5.00" D.J. POLY HOSE
  - ② 300' OF 2.50" D.J. POLY HOSE
  - ③ 300' OF 2.50" D.J. POLY HOSE
  - ④ 300' OF 2.50" D.J. POLY HOSE



**ALUMINUM BODY**

**SIDE ROLL PROTECTION**

**NOTE**  
DIMENSIONS SHOWN ARE APPROXIMATE AND ARE SUBJECT TO MINOR DEVIATIONS AS MAY OCCUR OR BE NECESSARY IN CONSTRUCTION. MINOR DETAILS NOT SHOWN.

1. KUSSMAUL BATTERY CHARGER LOCATED BEHIND THE DRIVER'S SEAT
2. ONE ADJUSTABLE SLIDE-OUT TRAY IN RS3
3. DUAL L.E.D. LIGHT STRIPS LOCATED IN HOSE BED
4. FULL WIDTH/DEPTH ADJUSTABLE SHELVES TWO IN LS1, RS1, AND RS3
5. ONE FLOOR MOUNTED SLIDE-OUT TRAY IN LS1, RS1, AND RS3
6. SWING-OUT TOOL BOARD WITH PEGBOARD PATTERN IN COMPARTMENTS RS2
7. CTECH DRAWER ASSEMBLY IN COMPARTMENT LS3
8. ALUMINUM PEGBOARD MOUNTED ON THE BACK WALL OF LS3, RS1, AND RS2
9. THREE ADDITIONAL POLY TRAYS SHIPPED LOOSE
10. CIRCUIT BREAKER PANEL IN COMPARTMENT LS3
11. 120V DUPLEX RECEPTACLE LOCATION TBD
12. STORAGE RACK FOR (3) EXTINGUISHERS IN LS3

		JOB NO.	34431
		SCALE	DATE
TITLE	1250-D-1750P, 1730 GAL OF WATER W/ 20 GAL FOAM CELL 184" FH FDLER, LDRS BTWN TANK & SS, (3) SPEEDLAYS	DRAWN BY	KLE
FOR	CARVER FIRE DEPARTMENT CARVER, MINNESOTA	CHECKED BY	KOU
DWG NO.	34431AD	SHEET SIZE	SHEET NO.
REV	DATE	BY	CH

REV	DATE	BY	CH	ENFORCER
1	19MAR20	KLE	PJP	CHASSIS DATA
2	19FEB20	KLE	PJP	MAKE
3	17JAN19	LST	PJP	PIERCE
4	01NOV19	KLE	KOU	MODEL