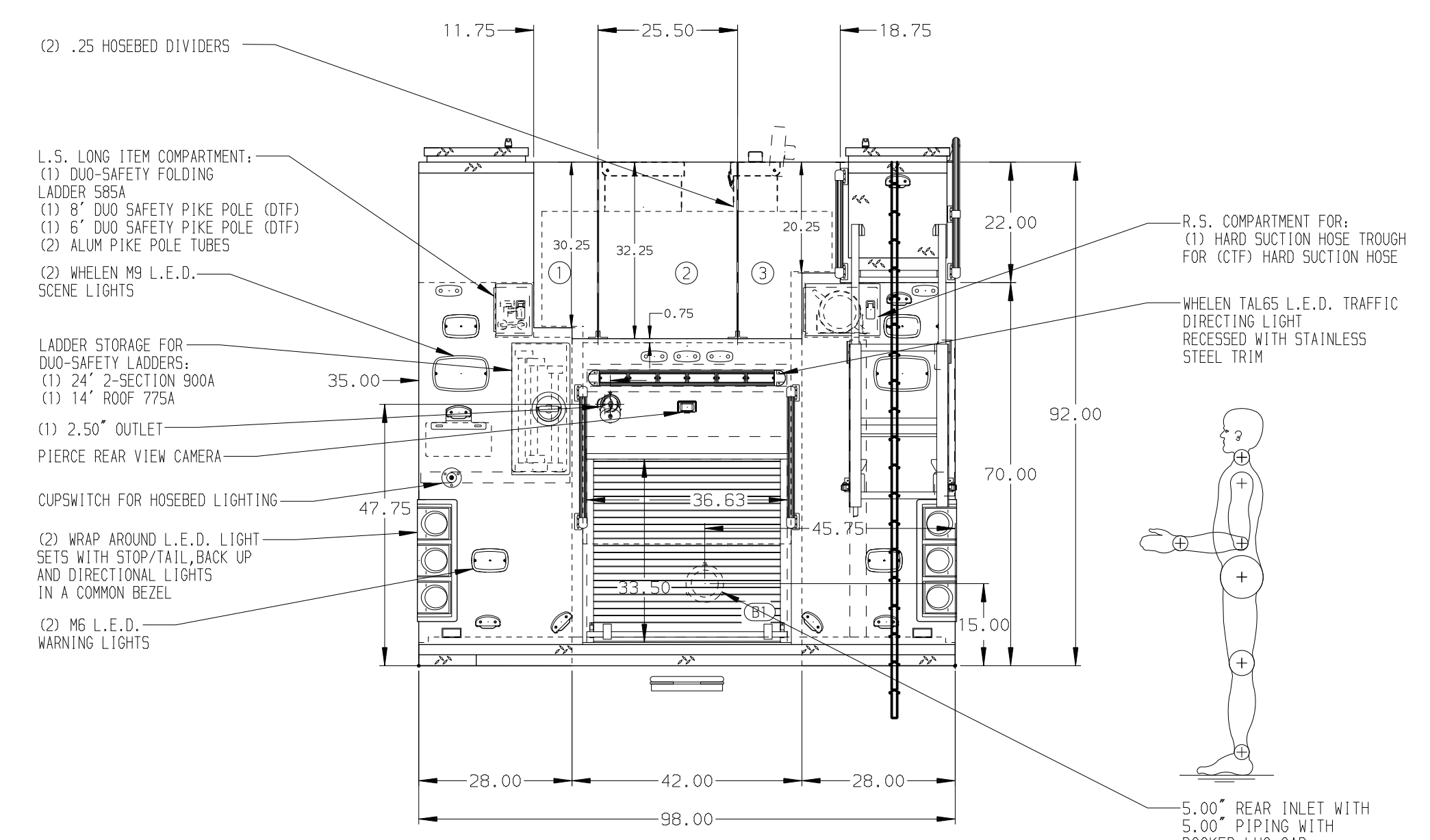
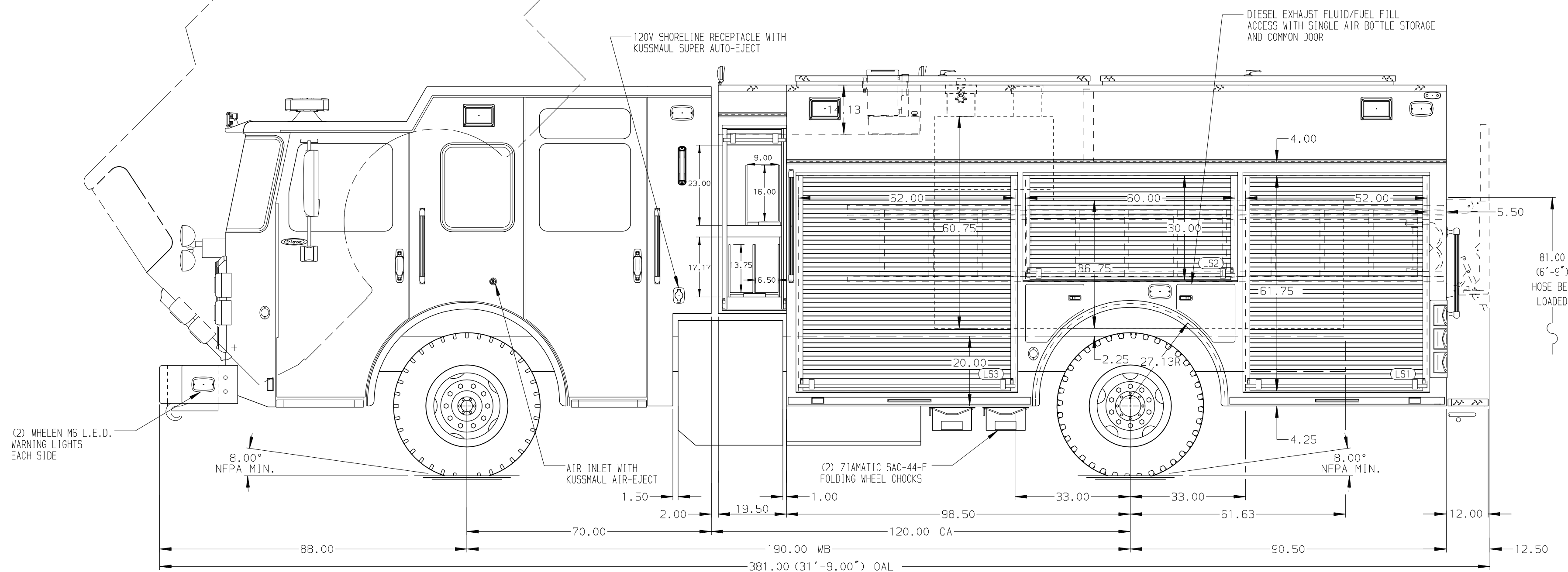


HOSEBED CAPACITIES

- ① 500' OF 3.00" HOSE
- ② 900' OF 5.00" HOSE
- ③ 500' OF 3.00" HOSE



ALUMINUM BODY

SIDE ROLL AND FRONTAL IMPACT PROTECTION

NOTE
DIMENSIONS SHOWN ARE APPROXIMATE AND ARE SUBJECT TO MINOR DEVIATIONS AS MAY OCCUR OR BE NECESSARY IN CONSTRUCTION. MINOR DETAILS NOT SHOWN.

1. ONSPOT AUTOMATIC TIRE CHAINS TO BE PROVIDED AT THE REAR
2. BATTERY CHARGER/COMPRESSOR IN COMPARTMENT L53
3. BATTERY CHARGER INDICATOR LOCATED ON DRIVER'S SEAT RISER
4. DUAL L.E.D. LIGHT STRIPS LOCATED IN HOSE BED
5. ONE FULL WIDTH/DEPTH ADJUSTABLE SHELVES IN COMPARTMENT RS2, B1; TWO IN L53
6. ONE ADJUSTABLE SLIDE-OUT TRAY IN COMPARTMENT L51; TWO IN RS3
7. ONE FLOOR MOUNTED SLIDE-OUT TRAY IN COMPARTMENT L51
8. ONE SWING-OUT ALUMINUM TOOL BOARD IN COMPARTMENT L52
9. CTECH DRAWER ASSEMBLY IN COMPARTMENT L53
10. XANTREX XPOWER 450 INVERTER BEHIND THE DRIVER'S SEAT
11. ONE SLIDE-OUT TOOLBOARD IN COMPARTMENT L51; TWO IN RS1
12. ONE VERTICAL PARTITION IN COMPARTMENT RS3

REV	DATE	BY	CH	ENFORCER
1	03FEB20	LST	PJP	PIERCE
2	10JAN20	LME	PJP	MODEL

		JOB NO.	34430
		SCALE	1:24
TITLE 1500-D-750P, 730 GAL OF WATER W/ 20 GAL FOAM CELL 189" PUC RESCUE, LADDERS THRU BODY, (3) CROSSLAYS	FOR PINE ISLAND FIRE DEPARTMENT PINE ISLAND, MINNESOTA	DRAWN BY	LST
		CHECKED BY	KOU
DWG NO. 34430AD	NO.	SHEET SIZE	D
		SHEET NO.	1 OF 1