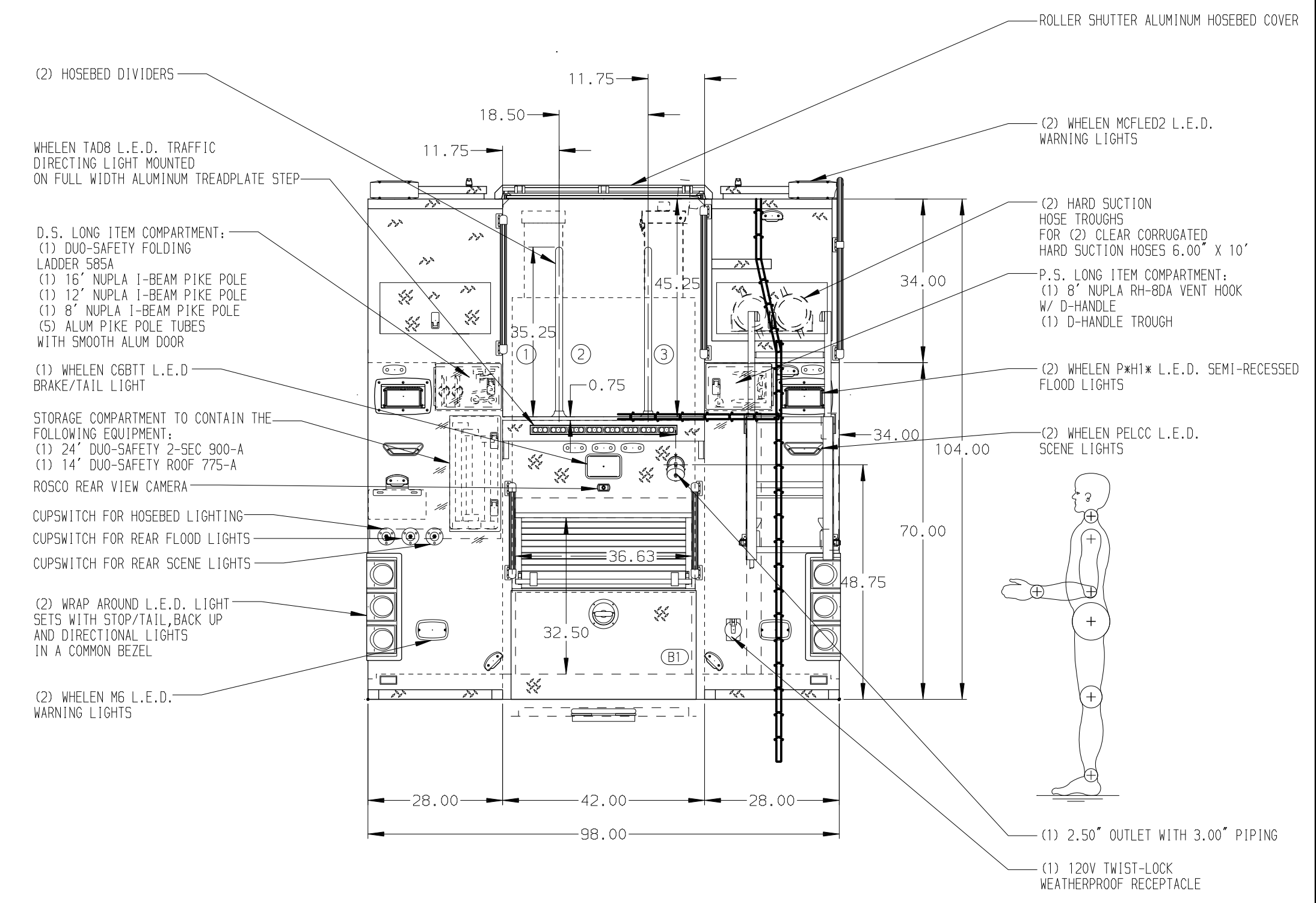
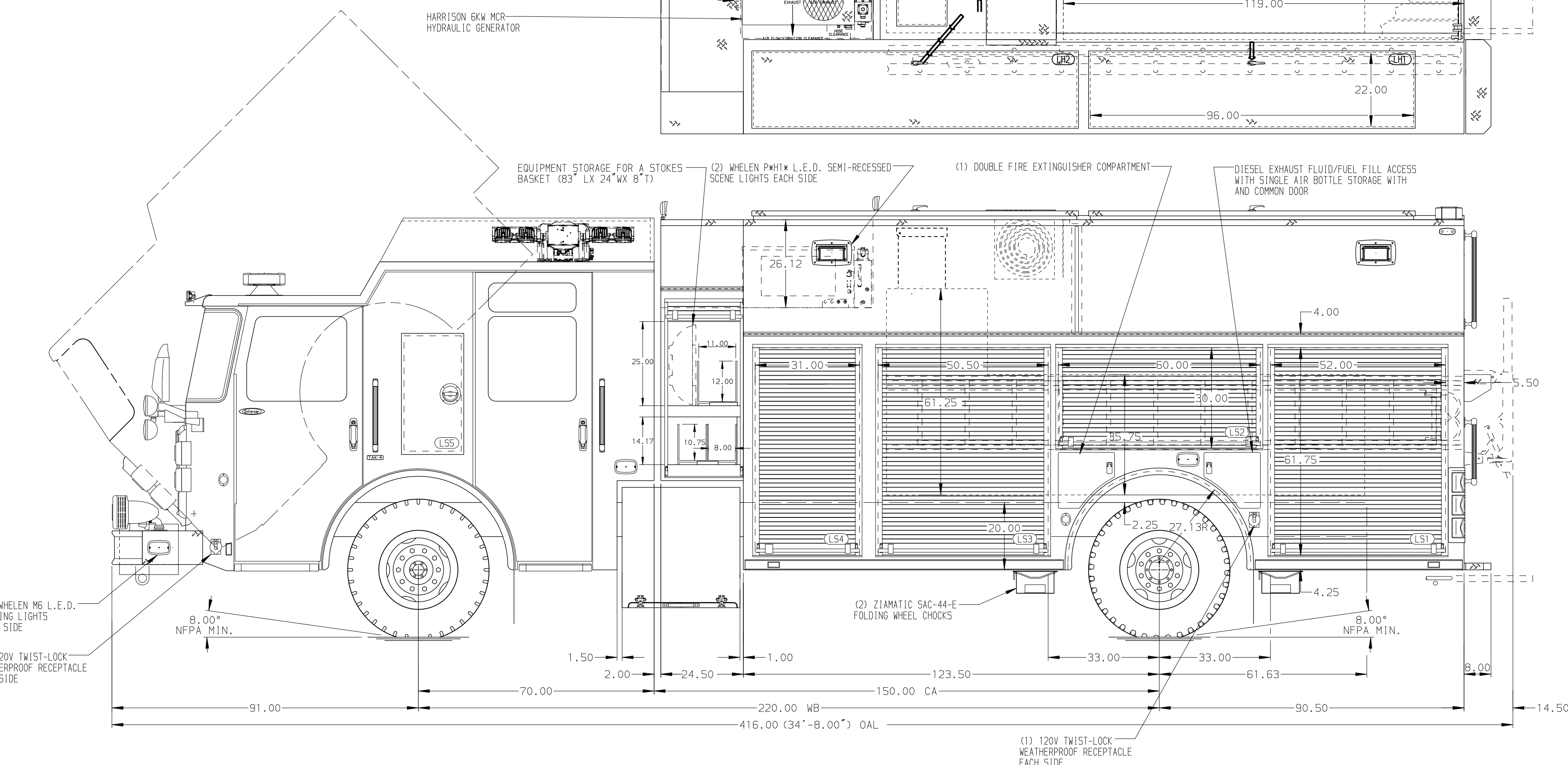


- HOSEBED CAPACITIES**
- ① 400' OF 3.00\"/>



ALUMINUM BODY

NOTE
DIMENSIONS SHOWN ARE APPROXIMATE AND ARE SUBJECT TO MINOR DEVIATIONS AS MAY OCCUR OR BE NECESSARY IN CONSTRUCTION. MINOR DETAILS NOT SHOWN.

1. ONSPOT AUTOMATIC TIRE CHAINS TO BE PROVIDED AT THE REAR
2. BATTERY CHARGER LOCATED IN L53
3. BATTERY CHARGER INDICATOR LOCATED ON DRIVER'S SEAT RISER
4. AIR INLET W/DISCONNECT COUPLING LOCATED DS STEP WELL FORWARD
5. DUAL L.E.D. LIGHT STRIPS LOCATED IN HOSE BED
6. FULL STRAP ON EACH ROLL UP CROSSLAY DOOR
7. ONE FULL WIDTH/DEPTH ADJUSTABLE SHELVES IN COMPARTMENTS RS1, LS1, & B1 TWO IN RS3 & RS4
8. ONE ADJUSTABLE TILTING SLIDE-OUT TRAY IN RS3, LS1, & LS3 TWO IN RS1 & RS2
9. ONE FLOOR MOUNTED SLIDE-OUT TRAY IN LS1, RS1, RS3, RS4, & B1
10. ONE SLIDE-OUT ALUMINUM TOOL BOARD WITH SLIDES TOP AND BOTTOM IN L53
11. TWO SWING-OUT ALUMINUM TOOL BOARDS IN L52
12. TOOL DRAWER WITH SET OF TWO SLIDE-OUT DRAWERS IN L53
13. VERTICAL PARTITION BETWEEN LS1/B1 AND RS1/B1
14. ONE VERTICAL PARTITION IN L53
15. ONE AIR BAG BACK FOR HOLDING (3) AIR BAGS IN RS1
16. TRIDENT FOAMATE 2.1 FOAM SYSTEM
17. NATHAN AIRCHIME KSLA AIR HORN CLUSTER BEHIND THE BUMPER
18. CIRCUIT BREAKER PANEL IN L53
19. ONE HANNAY ELECTRIC REWIND CORD REEL MODEL 1618-17-18 WITH 200' OF 10/3 CABLE IN HATCH ABOVE RS4
20. 120V 6-PLACE RECEPTACLE STRIP IN EACH EMS COMPARTMENT

		JOB NO.	34322
		SCALE	DATE
CHASSIS DATA		TITLE	1500-D-830P, 750 GAL OF WATER W/ 80 GAL FOAM CELL 214\"/>
FOR		DRAWN BY	LST
MODEL		CHECKED BY	NPE
ENFORCER		SHEET SIZE	SHEET NO.
REV DATE BY CH		DWG NO.	34322AD
02MAR20 LST PJP MAKE 08JAN20 MMF PJP PIERCE 25OCT19 LST NPE MODEL		DATE	140CT19
25OCT19 LST NPE MODEL		SHEET NO.	1 OF 1