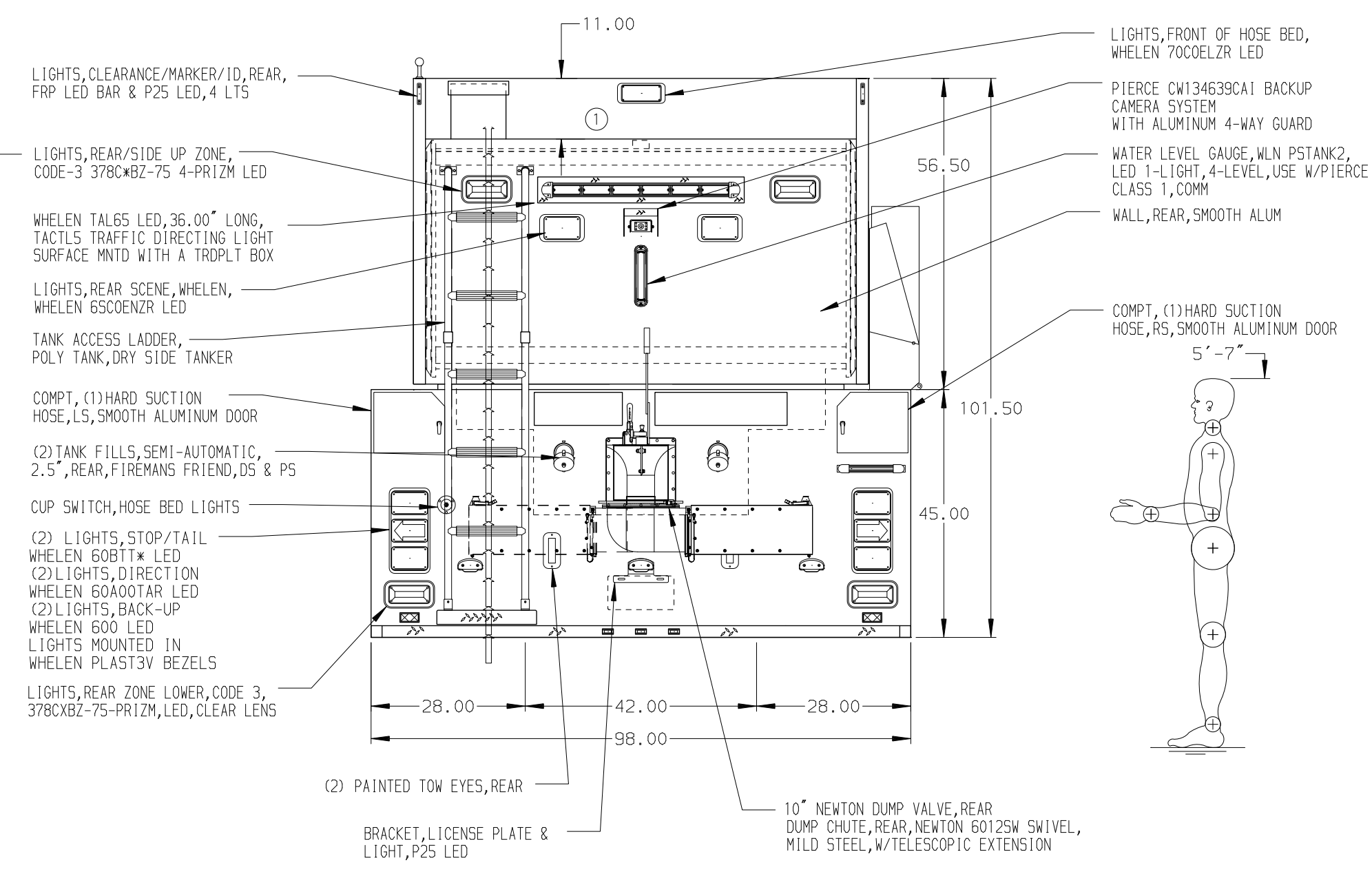
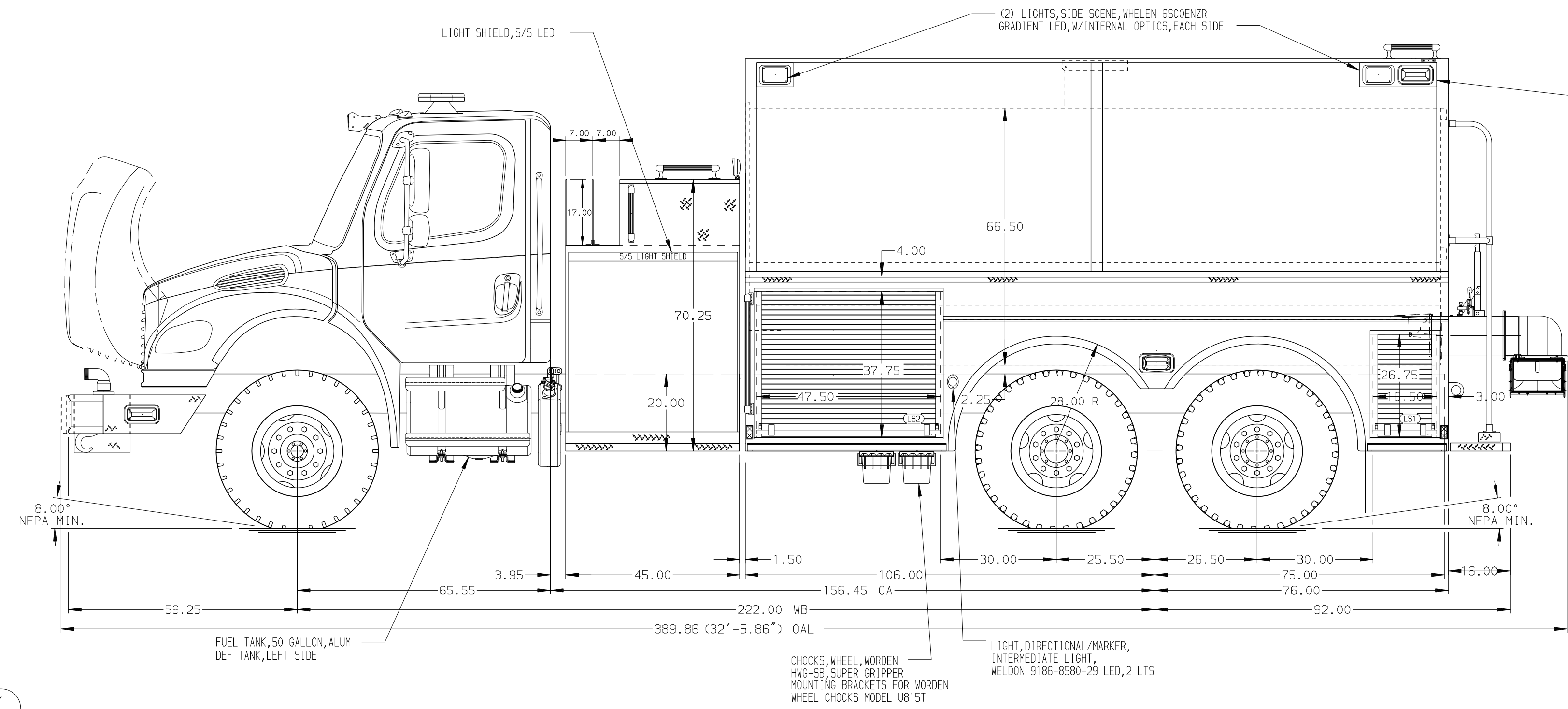


HOSEBED CAPACITIES
 ① 200' OF 2.50" D.J. POLY HOSE



ALUMINUM BODY

NOTE
 DIMENSIONS SHOWN ARE APPROXIMATE AND ARE SUBJECT TO MINOR DEVIATIONS AS MAY OCCUR OR BE NECESSARY IN CONSTRUCTION. MINOR DETAILS NOT SHOWN.

REV	DATE	BY	CH	CHASSIS DATA
07APR20	RHU	AJA	FL	MAKE
09MAR20	JLA	AJA	MODEL	M2-106

		JOB NO.	34290
		SCALE	DATE
TITLE	1000-D-3000P TANK, 182" DRYSIDE 45" SIDE CONTROL, (2) 1.5" CROSSLAYS	DRAWN BY	JLA
FOR	NEW HAMPTON NEW HAMPTON, IOWA	CHECKED BY	RWI
DWG NO.	34290AD	SHEET SIZE	SHEET NO.
		D	1 OF 1