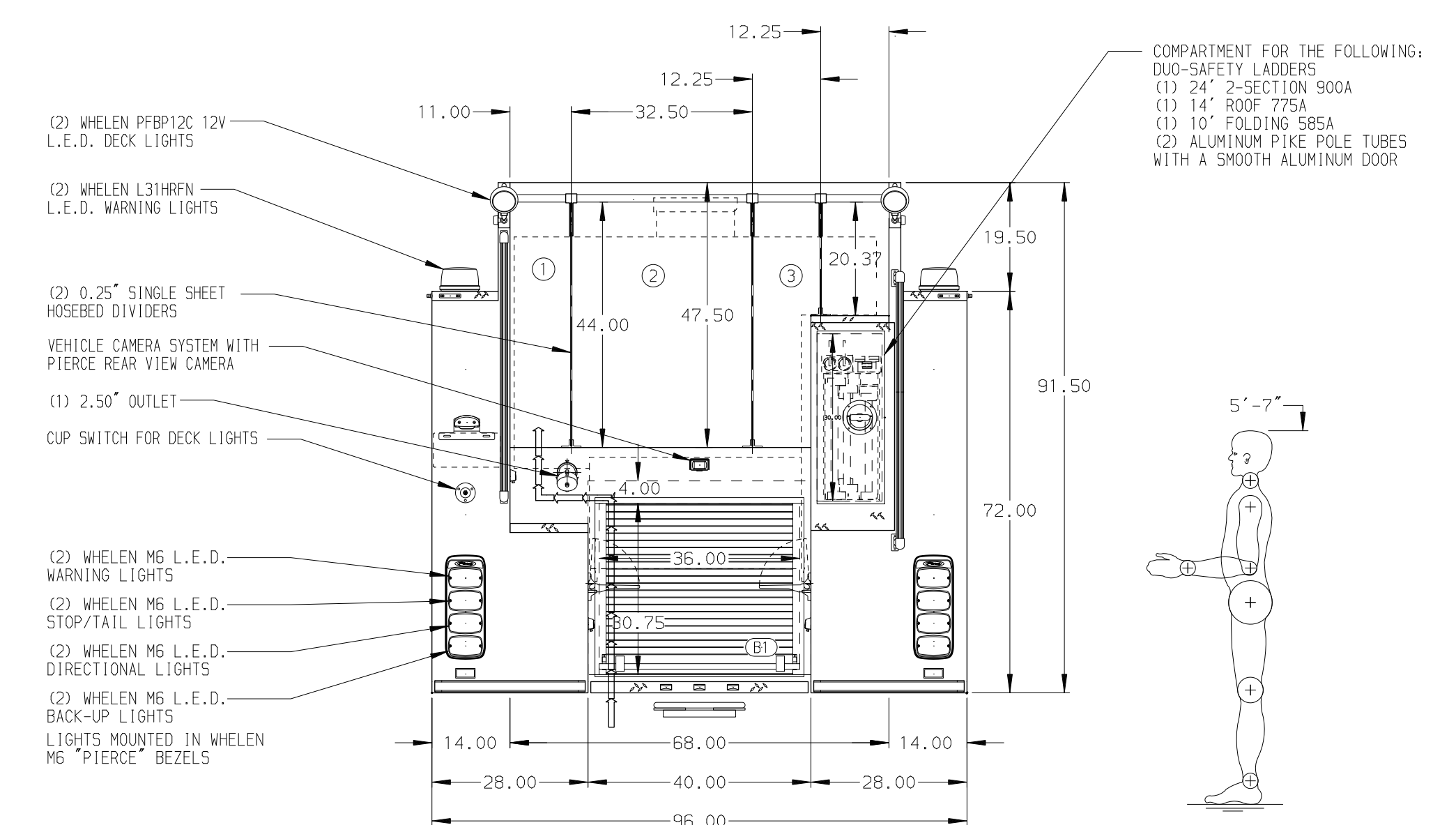


- HOSEBED CAPACITIES
- ① 500' OF 2.50" D.J. POLY HOSE
 - ② 1000' OF 5.00" D.J. POLY HOSE
 - ③ 500' OF 2.50" D.J. POLY HOSE



ALUMINUM BODY

NOTE
DIMENSIONS SHOWN ARE APPROXIMATE AND ARE SUBJECT TO MINOR DEVIATIONS AS MAY OCCUR OR BE NECESSARY IN CONSTRUCTION. MINOR DETAILS NOT SHOWN.

		JOB NO.	34287		
		SCALE	DATE		
CHASSIS DATA MAKE MODEL SABER FR	TITLE	1500-D-720P, W/30 GAL FOAM, 152" NEW YORK STYLE PUMPER 45" SIDE CONTROL, (2) 1.5" & (1) 2.5" CROSSLAYS	DRAWN BY	JLA	04SEP19
	FOR	PIERCE FIELD UNIT BRADENTON, FLORIDA	CHECKED BY	CAG	05SEP19
REV	DATE	BY	CH	SHEET SIZE	SHEET NO.
				D	1 OF 1

34287AD