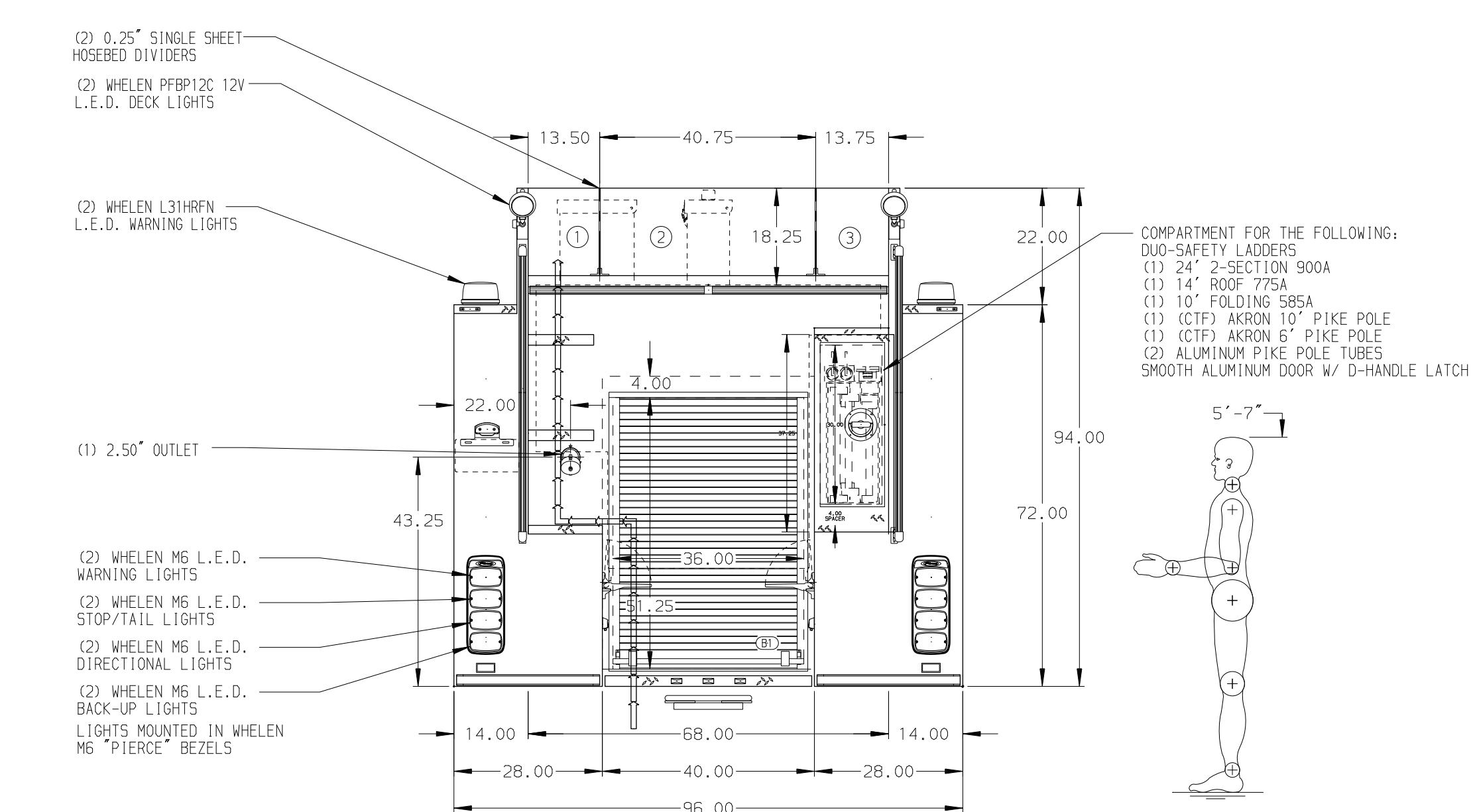


- HOSEBED CAPACITIES**
- ① 500' OF 2.50" D.J. HOSE
  - ② 1000' OF 5.00" D.J. HOSE
  - ③ 500' OF 2.50" D.J. HOSE



**ALUMINUM BODY**

**NOTE**  
DIMENSIONS SHOWN ARE APPROXIMATE AND ARE SUBJECT TO MINOR DEVIATIONS AS MAY OCCUR OR BE NECESSARY IN CONSTRUCTION. MINOR DETAILS NOT SHOWN.

				CHASSIS DATA	TITLE	1500-D-1020P, 1000 GAL WATER W/ 20 GAL FOAM, 152" PUMPER BODY, SIDE CONTROL, LADDERS BESIDE TANK.	JOB NO.	33918		
				MAKE	FOR	PIERCE FIELD UNIT BRADENTON, FLORIDA	SCALE	1:24	DATE	
12JUN19	KLE	KW1	PIERCE	MODEL	DWG NO.	33918AD	DRAWN BY	JLA	18APR19	
29MAY19	JLA	CAG	SABER FR				CHECKED BY	CAG	18APR19	
REV	DATE	BY	CH				SHEET SIZE	D	SHEET NO.	1 OF 1