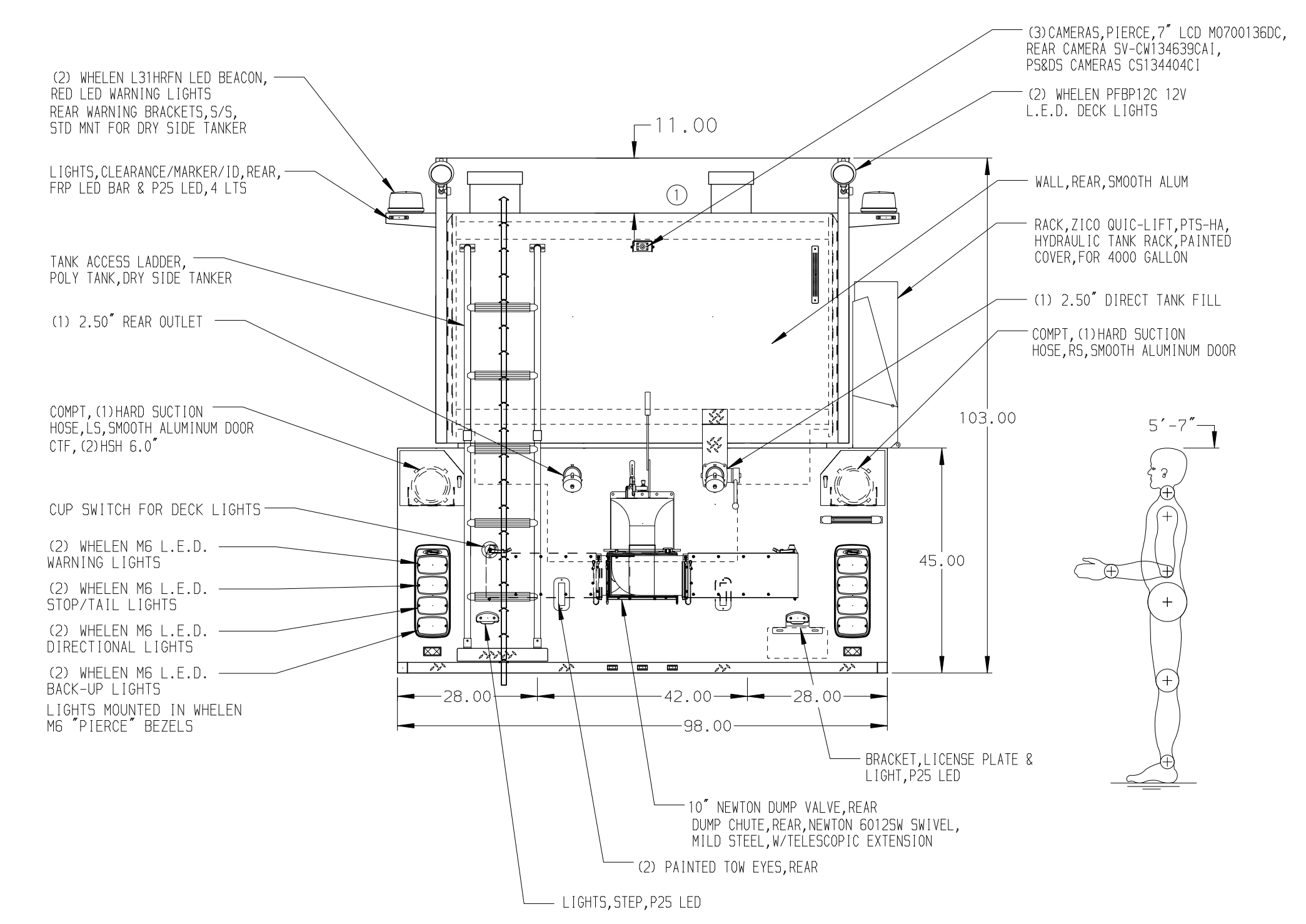
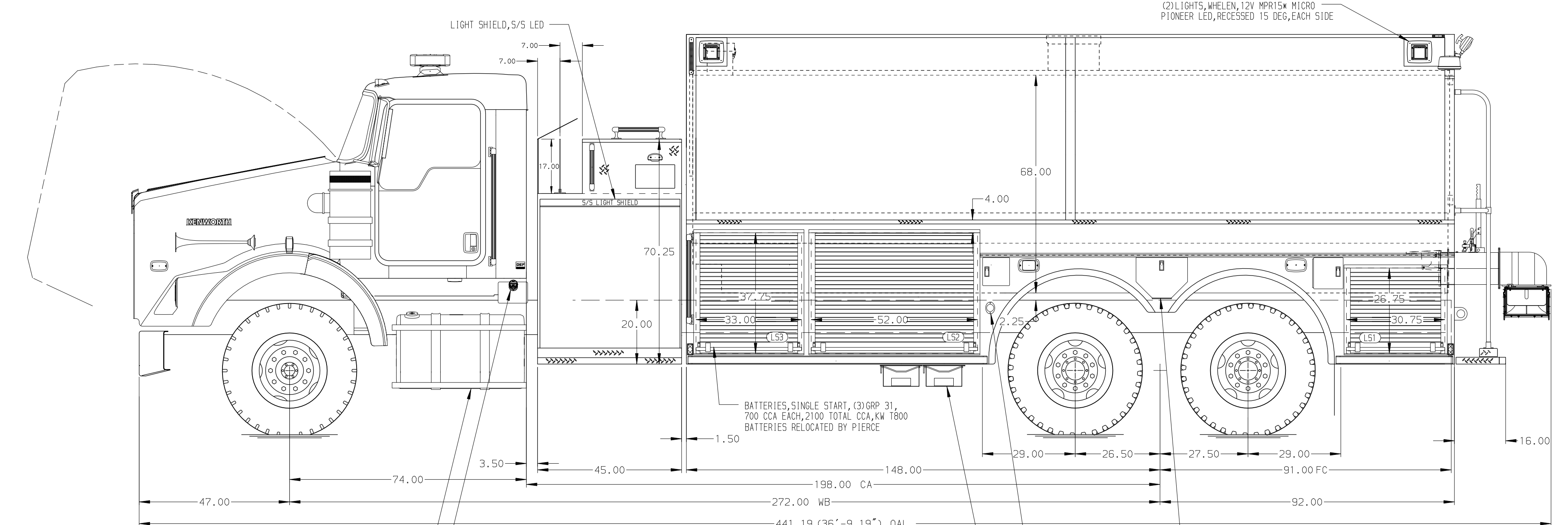


HOSEBED CAPACITIES

(1) 200' OF 2.50" D.J. POLY HOSE



ALUMINUM BODY

NOTE
DIMENSIONS SHOWN ARE APPROXIMATE AND ARE SUBJECT TO MINOR DEVIATIONS AS MAY OCCUR OR BE NECESSARY IN CONSTRUCTION. MINOR DETAILS NOT SHOWN.

		JOB NO.	33731
		SCALE	DATE
TITLE	1250-D-3900 POLY, 100 FOAM, 240" DRYSIDE BDY W/CATWALKS 45" SIDE CONTROL, (2) CROSSLAYS	DRAWN BY	JAF
FOR	EDDY COUNTY / RIVERSIDE CARLSBAD, NEW MEXICO	CHECKED BY	RWI
DWG NO.	33731AD	SHEET SIZE	SHEET NO.
		D	1 OF 1

REV	DATE	BY	CH	T800
03SEP19	JAF	AJA	MAKE	
13AUG19	JAF	AJA	KW	
14JUN19	CRH	RWI	MODEL	