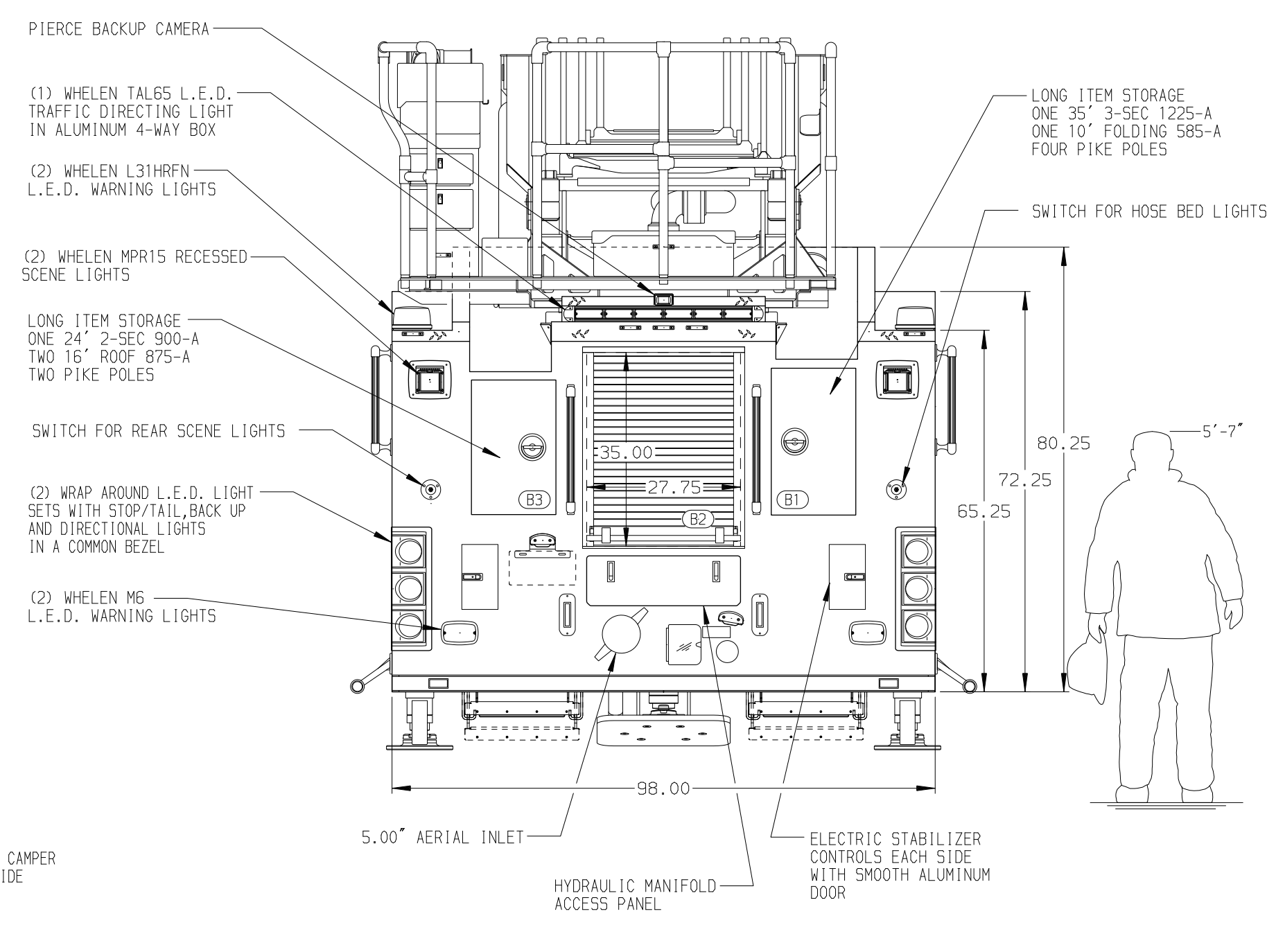
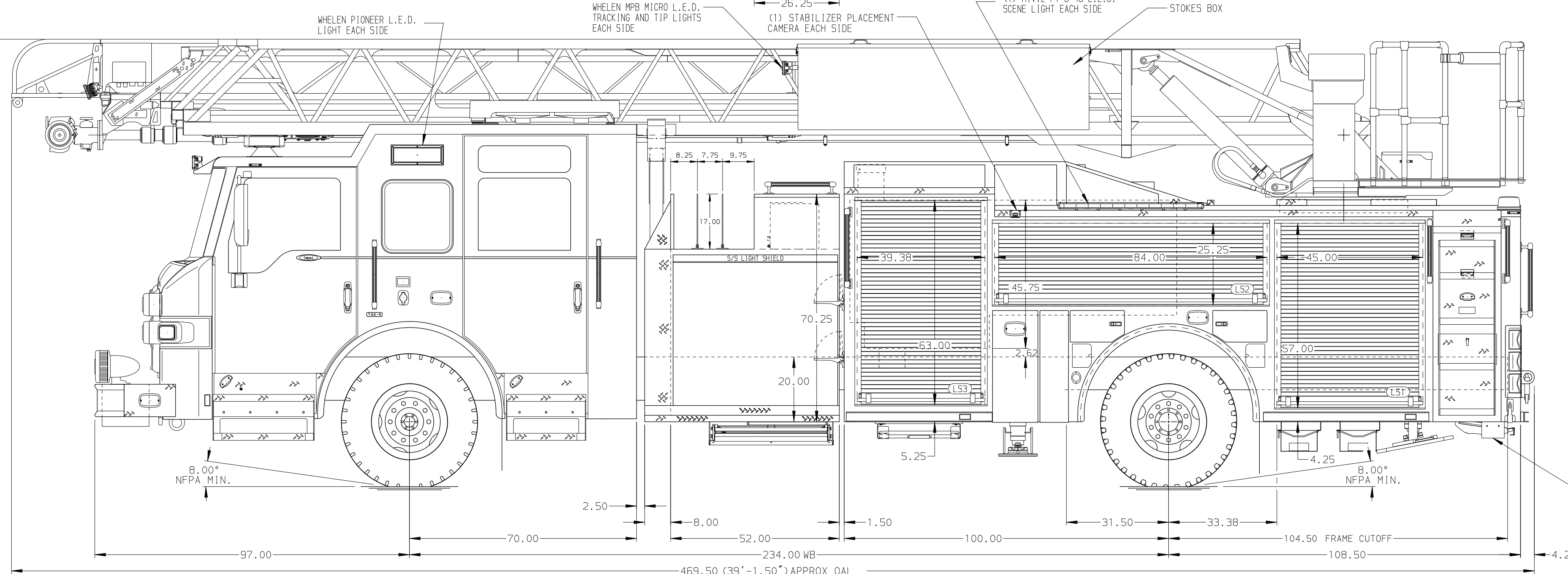
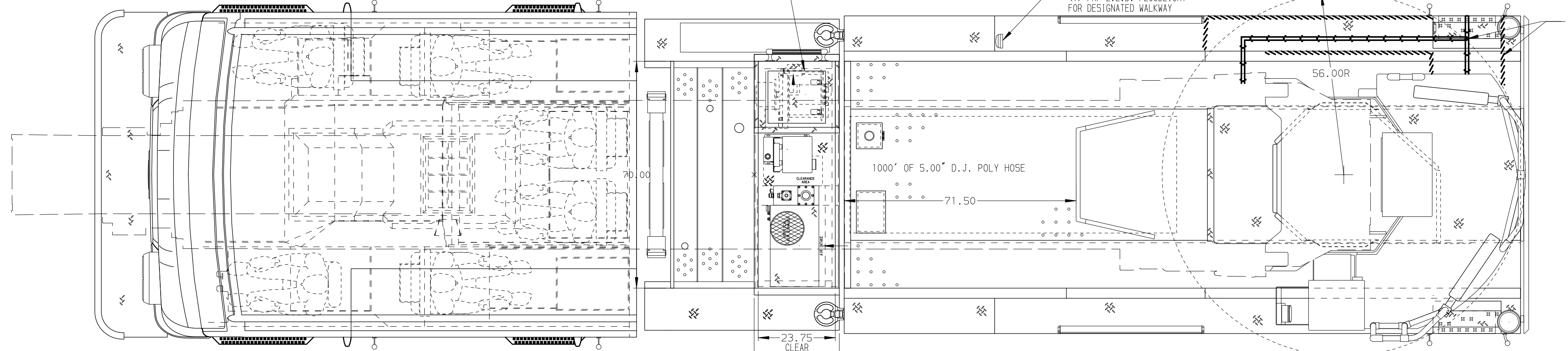


<p><b>BODY</b></p> <p>107' ASL Aluminum Body</p> <p>COMPT, LEFT SIDE FRONT</p> <p>Full Height RollUp Forward</p> <p>COMPT, LEFT SIDE REAR</p> <p>Full Height RollUp Rearward</p> <p>COMPT, RIGHT SIDE FRONT</p> <p>Full Height RollUp Forward</p> <p>COMPT, RIGHT SIDE REAR</p> <p>Full Height RollUp Rearward</p>	<p><b>WATER TANK</b></p> <p>500 Gallon Poly Water Tank</p> <p>Foam System</p> <p>Husky 3 Single Agent Foam System</p> <p>Foam Cell</p> <p>20 Gallon Foam Cell, Non-Reduced Water</p>
--	--



<p><b>CHASSIS</b></p> <p>Impel Chassis</p> <p><b>ENGINE</b></p> <p>450 HP Cummins L9 Engine</p>	<p><b>CAB</b></p> <p>7010 Notched Impel FR Cab</p> <p><b>BUMPER</b></p> <p>19" Extended Stainless Steel</p>	<p><b>AXLE, FRONT, CUSTOM</b></p> <p>22,800 Lb TAK-4 Axle</p> <p><b>AXLE, REAR</b></p> <p>33,500 Lb Meritor Axle</p>	<p><b>TRANSMISSION</b></p> <p>Allison 5th Gen, 3000 EV5 P</p>	<p><b>PUMPHOUSE</b></p> <p>52" Control Zone Side Mount PUMP</p> <p>2000 GPM Waterous CSU</p>	<p><b>CROSSLAYS, 1.50"</b></p> <p>(2) 1.50" Standard Capacity</p> <p><b>CROSSLAYS, 2.50"</b></p> <p>(1) 2.50" Standard Capacity</p>	<p><b>SPEEDLAYS</b></p> <p>Speedlays Not Required</p> <p><b>GENERATOR</b></p> <p>Harrison 6kW MSV Hydraulic</p>	<p><b>SAFETY</b></p> <p>Side Roll and Frontal Impact Protection</p>	<p><b>CUSTOMER APPROVAL</b></p> <p>APPROVED BY: _____</p> <p>DATE: _____</p>	<p><b>Pierce MANUFACTURING INC.</b></p>	<p>JOB NO. 33400</p> <p>SCALE 1:24</p> <p>DATE 20FEB19</p> <p>DRAWN BY LWE</p> <p>CHECKED BY NDA</p> <p>21FEB20</p> <p>SHEET SIZE D</p> <p>SHEET NO. 1 OF 1</p>
<p><b>NOTE</b></p> <p>DIMENSIONS SHOWN ARE APPROXIMATE AND ARE SUBJECT TO MINOR DEVIATIONS AS MAY OCCUR OR BE NECESSARY IN CONSTRUCTION. MINOR DETAILS NOT SHOWN.</p>										
<p>1. ONE 1.50 OUTLET WITH 2.00 PIPING AND SWIVEL LOCATED IN CENTER BUMPER TRAY</p> <p>2. SHORELINE RECEPTACLE WITH KUSSMAUL SUPER AUTO-EJECT LOCATED ON DRIVER SIDE OF THE CAB</p> <p>3. AIR INLET WITH DISCONNECT COUPLING IN THE DRIVER SIDE STEPWELL</p> <p>4. BATTERY CHARGER LOCATED BEHIND DRIVER'S SEAT</p> <p>5. BATTERY CHARGE INDICATOR LOCATED ON DRIVER SIDE OF THE CAB</p> <p>6. SIX ADJUSTABLE SHELVES IN COMPARTMENTS PER SHOP ORDER</p> <p>7. FOUR FLOOR MOUNTED SLIDE-OUT TRAYS IN COMPARTMENTS PER SHOP ORDER</p> <p>8. CIRCUIT BREAKER PANEL IN COMPARTMENT PER SHOP ORDER</p> <p>9. NON-RAISED AERIAL PEDESTAL</p> <p>10. 1500 GPM HIGH FLOW WATERWAY</p> <p>11. AC POWER TO AERIAL TIP</p>										
<p>01MAR19 LWE THS</p> <p>REV DATE BY CH</p> <p>IMPEL</p> <p>CHASSIS DATA</p> <p>MAKE</p> <p>PIERCE</p> <p>MODEL</p> <p>TITLE 107' ASCENDANT AERIAL LADDER AND BODY ASSEMBLY</p> <p>FOR PIERCE FIELD UNIT APPLETON, WISCONSIN</p> <p>DWG NO. 33400AD</p>										