

PASSENGER'S SIDE COMPARTMENTS  
CONTAIN THE FOLLOWING:

COMPARTMENT P1 CONTAINS:

- (1) TRAY, FLOOR MOUNTED, SLIDE-OUT,  
STD. DEPTH COMPT, 500LB, 2.00' SIDES
- (1) SHELF, ADJUSTABLE, 500 LB CAPACITY,  
STANDARD DEPTH

COMPARTMENT P2 CONTAINS:

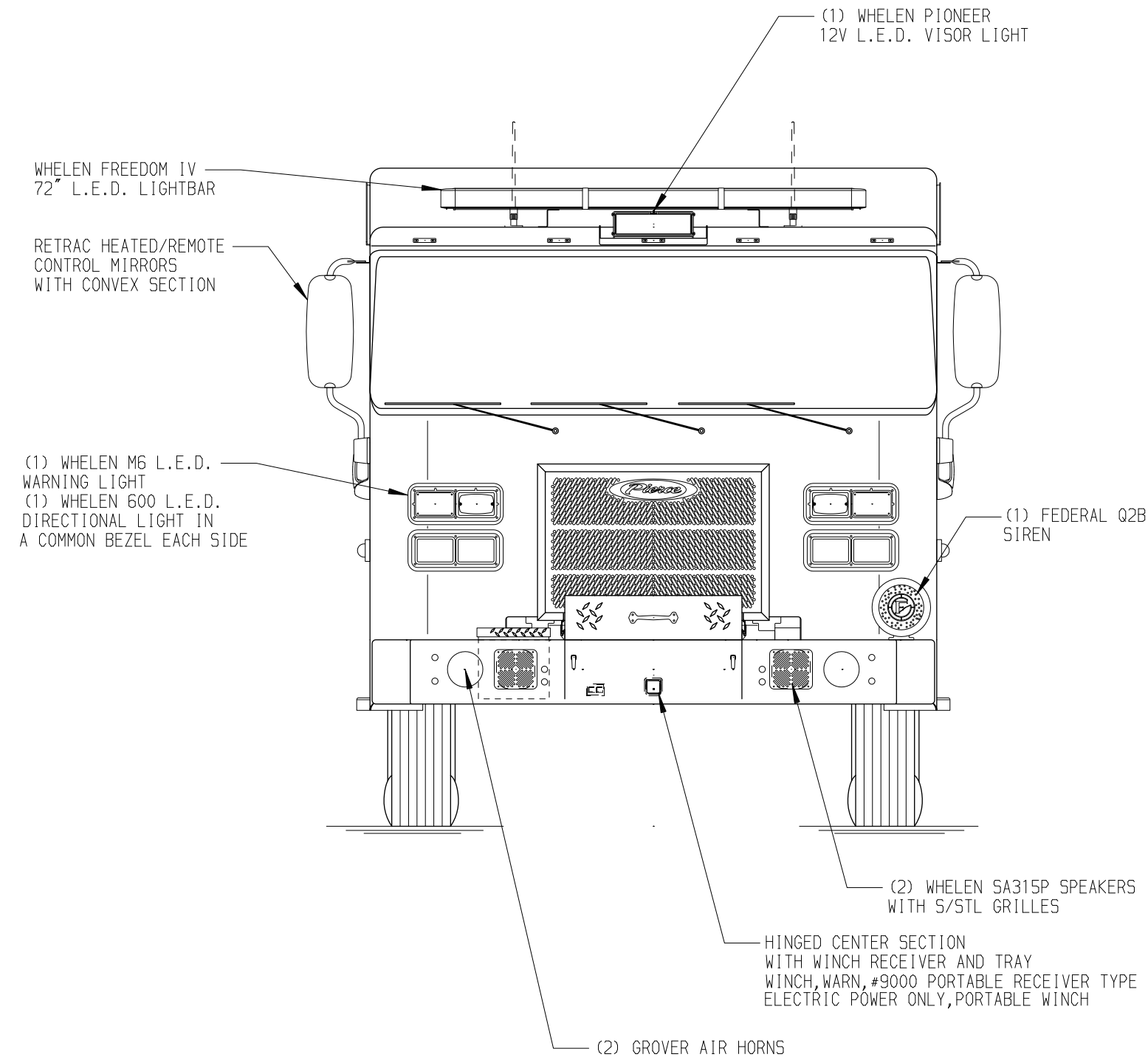
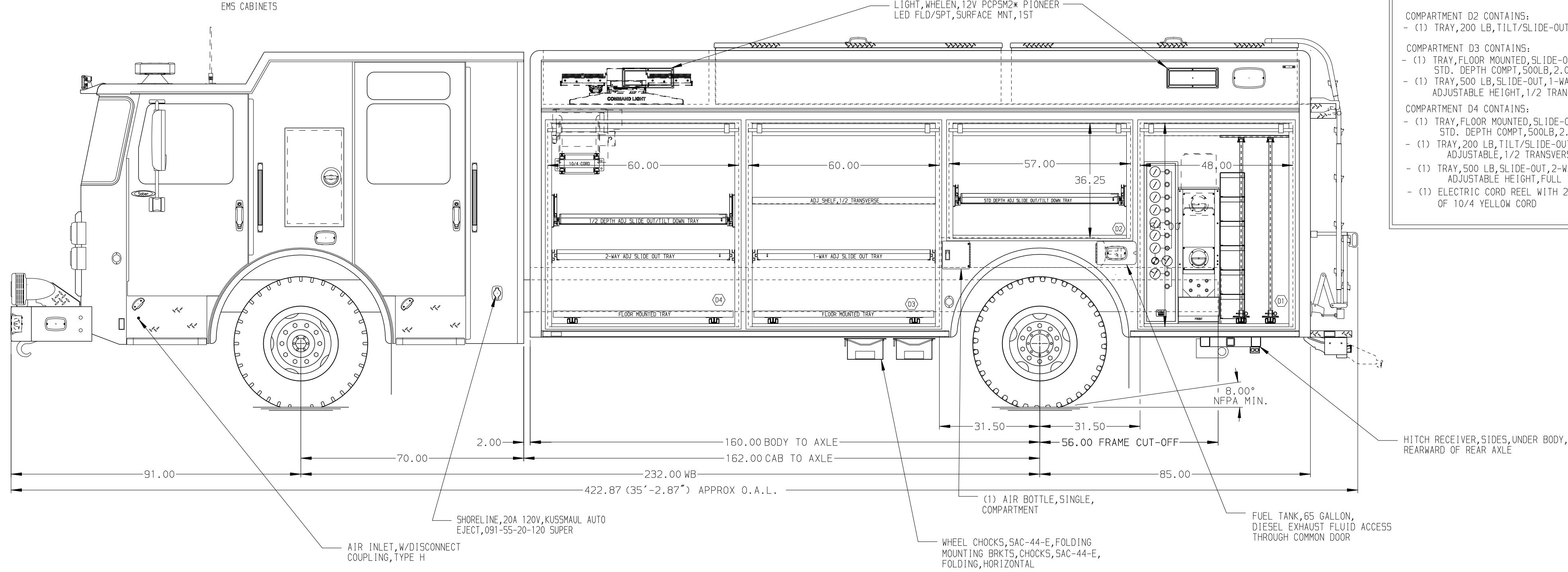
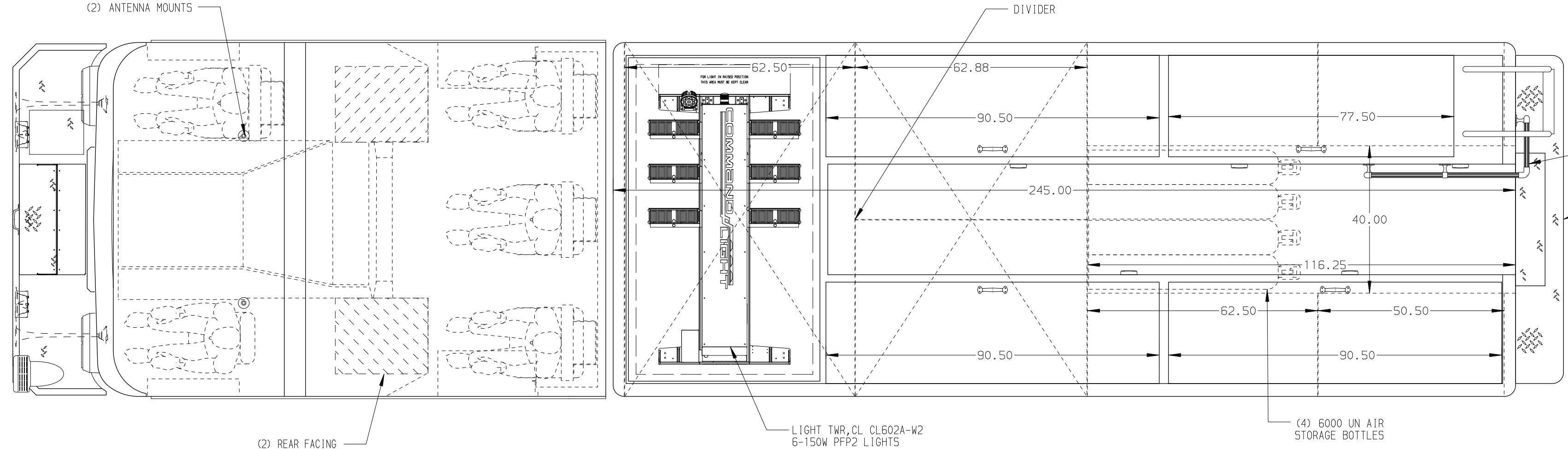
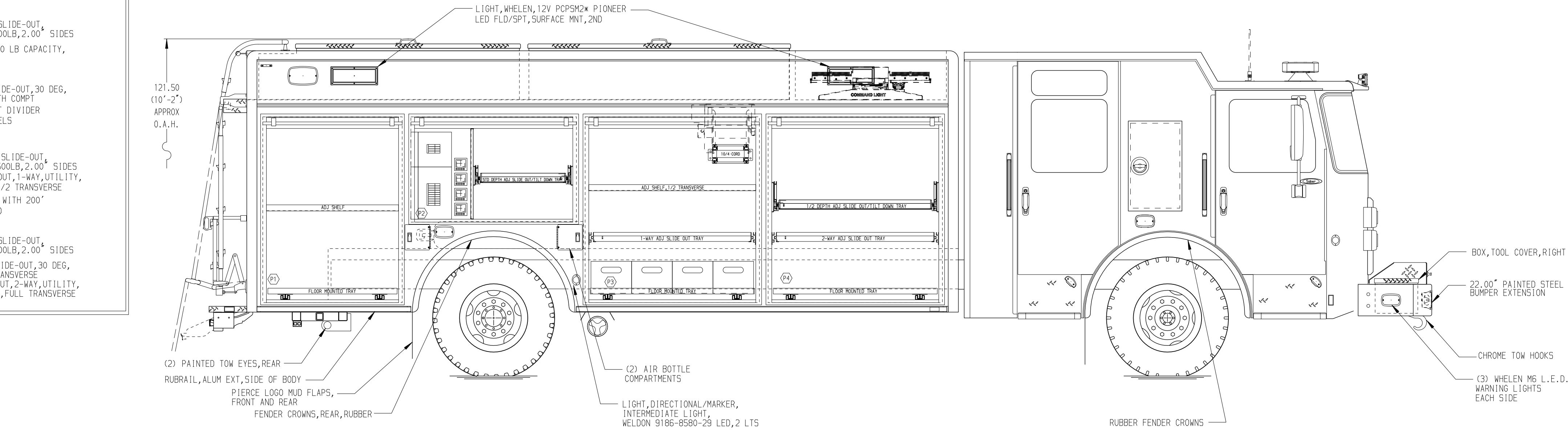
- (1) TRAY, 200 LB, TILT/SLIDE-OUT, 30 DEG,  
ADJUSTABLE, STD DEPTH COMPT
- (1) VERTICAL COMPARTMENT DIVIDER
- (2) CIRCUIT BREAKER PANELS

COMPARTMENT P3 CONTAINS:

- (1) TRAY, FLOOR MOUNTED, SLIDE-OUT,  
STD. DEPTH COMPT, 500LB, 2.00' SIDES
- (1) TRAY, 500 LB, SLIDE-OUT, 1-WAY, UTILITY,  
ADJUSTABLE HEIGHT, 1/2 TRANSVERSE
- (1) ELECTRIC CORD REEL WITH 200'  
OF 10/4 YELLOW CORD

COMPARTMENT P4 CONTAINS:

- (1) TRAY, FLOOR MOUNTED, SLIDE-OUT,  
STD. DEPTH COMPT, 500LB, 2.00' SIDES
- (1) TRAY, 200 LB, TILT/SLIDE-OUT, 30 DEG,  
ADJUSTABLE, 1/2 TRANSVERSE
- (1) TRAY, 500 LB, SLIDE-OUT, 2-WAY, UTILITY,  
ADJUSTABLE HEIGHT, FULL TRANSVERSE



REAR COMPARTMENT CONTAINS THE FOLLOWING:

COMPARTMENT R1 CONTAINS:

- (1) TRAY, FLOOR MOUNTED, SLIDE-OUT,  
STD. DEPTH COMPT, 500LB, 2.00' SIDES
- (1) TRAY, 500 LB, SLIDE-OUT, 1-WAY, UTILITY,  
ADJUSTABLE HEIGHT, 110" DEEP
- (1) RACK, STOKES/STRETCHER BASKET,  
HORIZONTAL TROUGH

DRIVER'S SIDE COMPARTMENTS  
CONTAIN THE FOLLOWING:

COMPARTMENT D1 CONTAINS:

- (2) TOOLBOARDS, SLIDE-OUT, ALUM, .188",  
PEG BOARD, STD. DEPTH
- (1) CASCADE SYSTEM CONTROL PANEL
- (1) SPACESAVER 2-BOTTLE FILL ENCLOSURE

COMPARTMENT D2 CONTAINS:

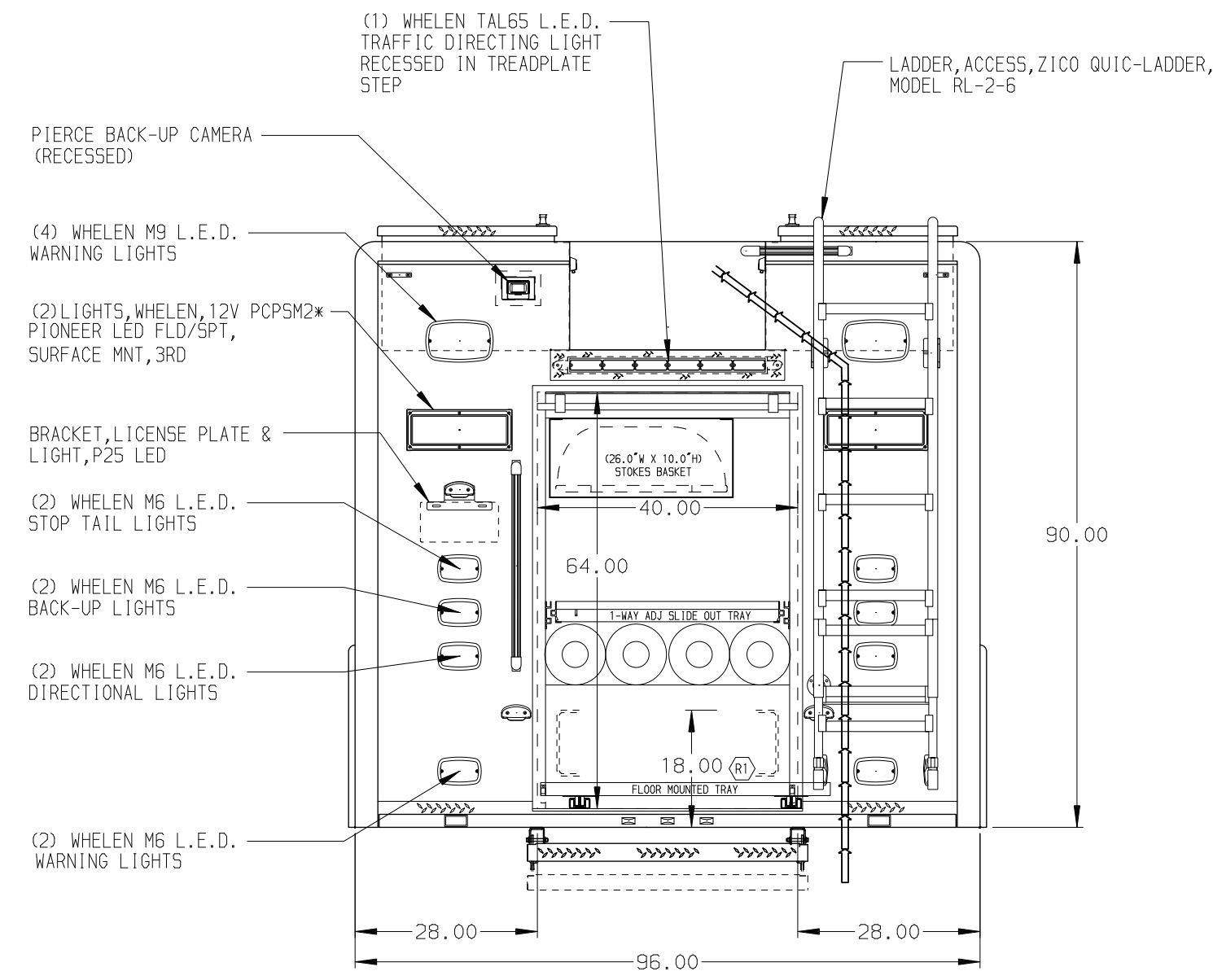
- (1) TRAY, 200 LB, TILT/SLIDE-OUT, 30 DEG,

COMPARTMENT D3 CONTAINS:

- (1) TRAY, FLOOR MOUNTED, SLIDE-OUT,  
STD. DEPTH COMPT, 500LB, 2.00' SIDES
- (1) TRAY, 500 LB, SLIDE-OUT, 1-WAY, UTILITY,  
ADJUSTABLE HEIGHT, 1/2 TRANSVERSE

COMPARTMENT D4 CONTAINS:

- (1) TRAY, FLOOR MOUNTED, SLIDE-OUT,  
STD. DEPTH COMPT, 500LB, 2.00' SIDES
- (1) TRAY, 200 LB, TILT/SLIDE-OUT, 30 DEG,  
ADJUSTABLE, 1/2 TRANSVERSE
- (1) TRAY, 500 LB, SLIDE-OUT, 2-WAY, UTILITY,  
ADJUSTABLE HEIGHT, FULL TRANSVERSE
- (1) ELECTRIC CORD REEL WITH 200'  
OF 10/4 YELLOW CORD



NOTE  
DIMENSIONS SHOWN ARE APPROXIMATE  
AND ARE SUBJECT TO MINOR DEVIATIONS  
AS MAY OCCUR OR BE NECESSARY IN  
CONSTRUCTION.  
MINOR DETAILS NOT SHOWN.

				CHASSIS DATA	TITLE	HEAVY DUTY RESCUE, 20.50' BODY NON-WALK-IN	JOB NO.	32057
				MAKE	FOR	HORRY COUNTY FIRE & RESCUE CONWAY, SC	SCALE	1:24
				MODEL	DWG NO.	32057AD	DRAWN BY	JAF
				REV	DATE	BY	CHECKED BY	RWI
				CH	SBFR7010	ALAN AXSON	SHEET SIZE	SHEET NO.
								1 OF 1