



PERFORM. LIKE NO OTHER.™

# Enforcer™ Heavy-Duty Rescue Pumper

*Featuring a Metal Dash and Integrated Speedlays*



## Chassis

Chassis	70" <b>Enforcer</b> cab with a 10" raised roof <b>**New on the Enforcer** Metal dash and HVAC cover</b>
Seating Capacity	6
Overall Height	9' 11.10"
Overall Length	34'
GVW Rating	46,500 lb
Safety	<b>Side Roll and Frontal Impact Protection</b> <b>HAAS Alert Collision Mitigation - R2V</b> <b>TAK-4® Independent Front Suspension</b> , 19,500 lb
Front Axle	Dana S26-190, 27,000 lb
Rear Axle	Cummins L9, 450 hp, 1,250 torque
Engine	
Electrical System	<b>Command Zone™ Advanced Electronics System</b>

## Body

Material	Aluminum
Shelving	Adjustable, up to 500 lb
Doors	Rollup
Pump	Waterous, 1,500 gpm
Tank	750 gallons, low hose bed
Storage	Thru-tunnel ladder storage
Pump Panel	<b>Pierce® Control Zone™</b> 34" pump panel with integrated speedlays
Foam System	<b>Husky™ 3 Foam System</b>
Foam Cell	20 gallons

Pierce Manufacturing, an Oshkosh Corporation Company  
2600 American Drive, Appleton, WI 54914

Contact your local Pierce dealer for more information

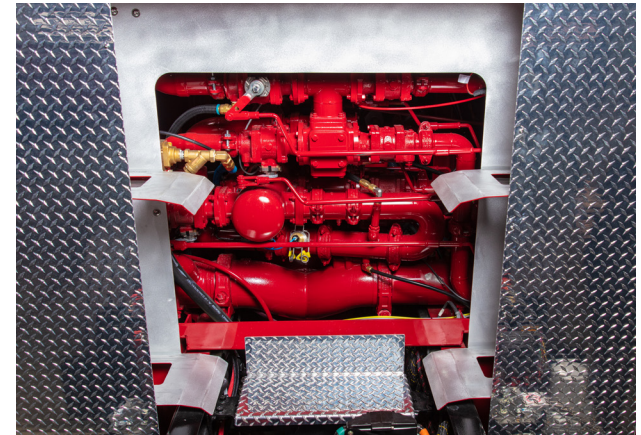




A metal HVAC cover is now available on the Enforcer cab.



A robust metal dash is now available on the Enforcer cab.



Complete access to the pump house for service through the front. Access is also provided on the left side, right side, and top.

On this HDRP, full depth body compartments and full length hatch compartments provide a total of 440 cubic feet of storage.



The low hose bed is provided with ladders stored in a tunnel to provide easy access on scene.

Long tool/suction hose storage is behind the door spool.

Full width tailboard with an easy access ladder for safe climbing.



The 34" wide Control Zone pump panel is organized with color coded controls. The speelayes are integrated, providing pre-connects that are 43" and 66" off the ground - all on a 45" pump house.