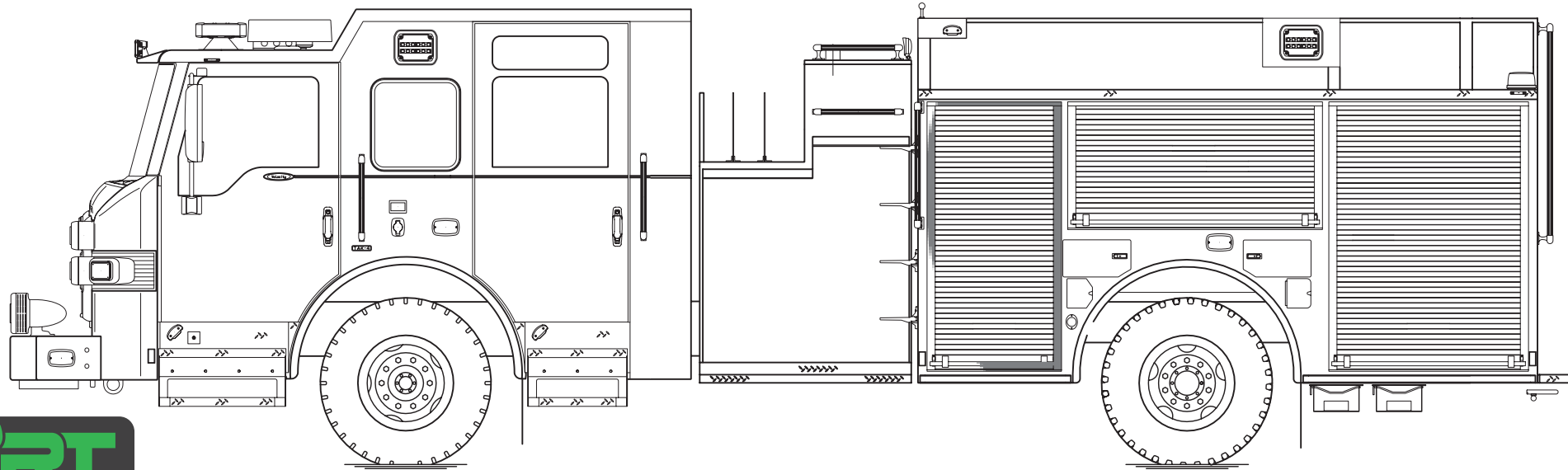




PERFORM. LIKE NO OTHER.™

Velocity® Pumper



PACCAR MX-13

Chassis

Chassis	70" <i>Velocity</i> cab with a 10" raised roof
Seating Capacity	6
Overall Height	9' 10"
Overall Length	31' 2.5"
GVW Rating	46,800 lb
Safety	<i>Side Roll and Frontal Impact Protection</i>
Front Axle	<i>TAK-4® Independent Front Suspension</i> , 22,800 lb
Rear Axle	Meritor RS24-160, 24,000 lb
Engine	<i>PACCAR MX-13</i> , 510 hp, 1850 torque
Electrical System	<i>Command Zone™ Advanced Electronics System</i> <i>Idle Reduction Technology</i>

Body

Material	Aluminum
Shelving	Adjustable, up to 500 lb
Doors	Rollup
Pump	Waterous, 2000 gpm
Tank	750 gallons
Pump Panel	<i>Pierce® Control Zone™</i> 52" pump panel
Foam System	<i>Husky™ 3 Foam System</i>
Foam Cell	20 gallons

Pierce Manufacturing, an Oshkosh Corporation Company
2600 American Drive, Appleton, WI 54914

Contact your local Pierce dealer for more information

PUMPER

BODY

Medium Aluminum 2nd Gen Pumper

CHASSIS

Velocity Chassis (Big Block)

CHASSIS

AXLE, FRONT, CUSTOM

22,800 lb TAK-4 Axle

AXLE, REAR

24,000 lb Meritor Axle

ENGINE

510 HP W/0BD EPA 2021 Test Engine

TRANSMISSION

Allison 5th Gen, 4000 EVS P

BUMPER

19" Extended Painted Steel

CAB

7010 Velocity FR Cab

BODY

WATER TANK

730 Gallon Poly Water Tank

COMPT, PUMPER, REAR

37.75" FF RollUp Rear Compt

COMPT, PUMPER, DRIVER SIDE

152" RollUp Full Height Front & Rear FDLER

COMPT, PUMPER PASS. SIDE

152" RollUp Full Height Front & Rear FDLER

FIRE SUPPRESSION

PUMPHOUSE

52" Control Zone Side Mount

PUMP

2000 GPM Waterous CSU

CROSSLAYS, 1.50"

(2) 1.50" Standard Capacity

CROSSLAYS, 2.50"

(1) 2.50" Standard Capacity

SPEEDLAYS

Speedlays Not Required

GENERATOR

Generator Not Required

Foam System

Husky 3 Single Agent Foam System

Foam Cell

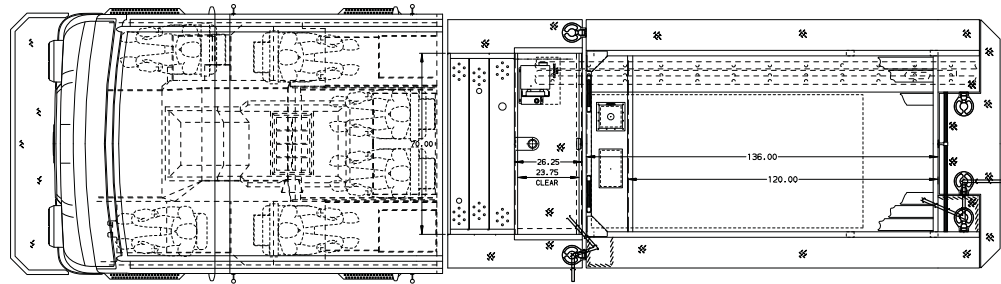
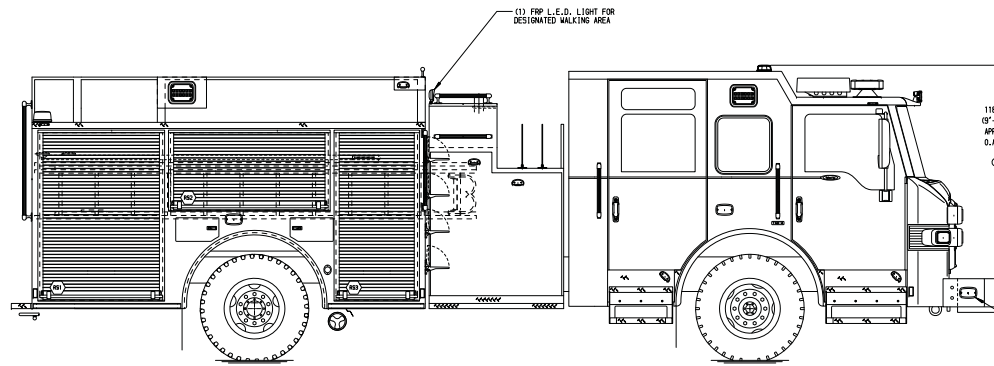
20 Gallon Foam Cell, Reduced Water

Side Roll and Frontal Impact Protection

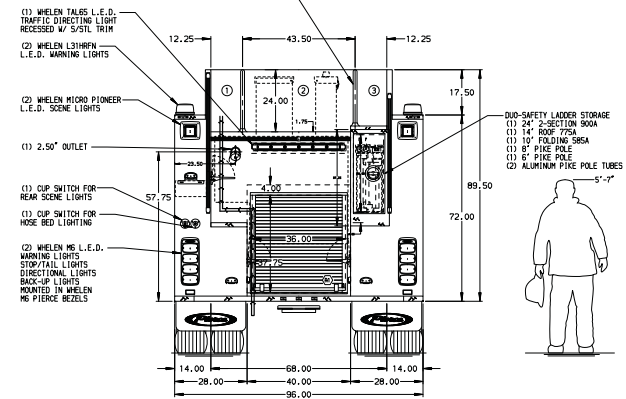
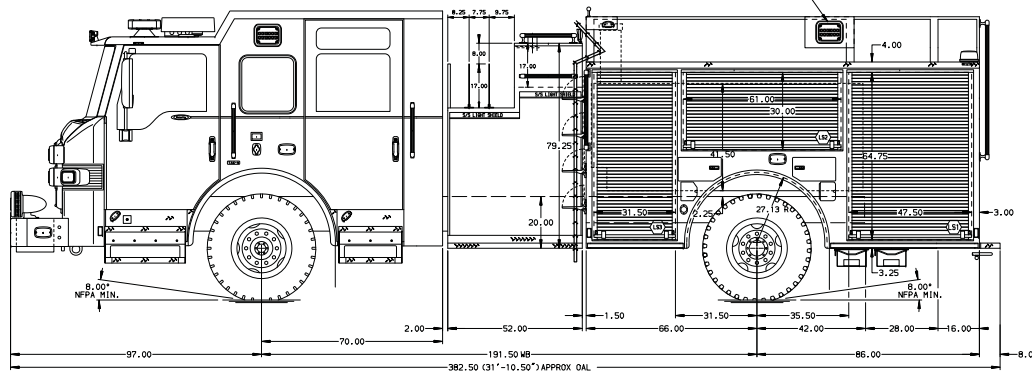
NOTE

DIMENSIONS SHOWN ARE APPROXIMATE AND ARE SUBJECT TO MINOR DEVIATIONS AS MAY OCCUR OR BE NECESSARY IN CONSTRUCTION.
MINOR DETAILS NOT SHOWN.

- ONE 1.50" OUTLET WITH 2.00" PIPING AND SKIVEL LOCATED IN CENTER BUMPER TRAY
- SHOULDER RECEPIABLE WITH HOSSMIAL SUPER AUTO-EJECT LOCATED ON DRIVER SIDE OF THE CAB
- AIR INLET WITH DISCONNECT COUPLING RECESSED IN THE DRIVER SIDE STEPPLEWELL
- BATTERY CHARGER LOCATED IN CUP SEAT SIDE
- BATTERY CHARGE INDICATOR LOCATED ON THE DRIVER SIDE SEAT RISER
- SEVEN ADJUSTABLE SHELVES IN COMPARTMENTS PER SHOP ORDER
- DOOT FLOOR MOUNTED SLIDE-OUT TRAYS IN COMPARTMENTS PER SHOP ORDER



HOSEBED CAPACITY	
BED 1	500' OF 3.00" D.J. POLY HOSE
BED 2	1000' OF 5.00" D.J. POLY HOSE
BED 3	500' OF 3.00" D.J. POLY HOSE



CUSTOMER APPROVAL

APPROVED BY:

DATE:

REV	DATE	BY	CH	VELOCITY
03JUN20	MMF	THS		
31MAR20	MMF	NPE		



JOB NO. 34964

SCALE 1:24

DATE

TITLE Pierce Pumper Approval Drawing

FOR Pierce Stock Unit

DWG NO.

NO.

34964AD

DRAWN BY MMF

18MAR20

CHECKED BY NPE

25MAR20

SHEET NO. D

SHEET 1 OF 1