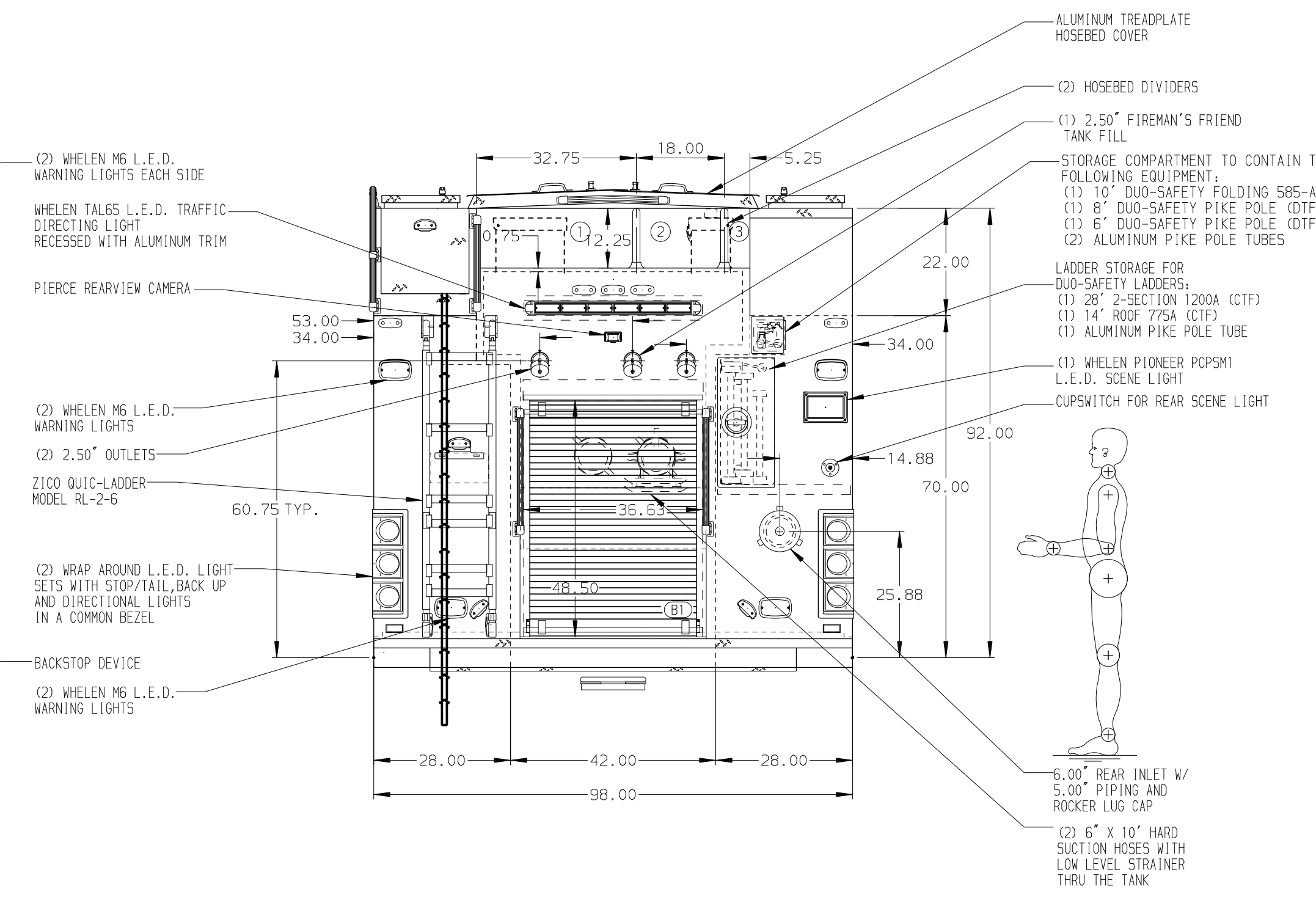
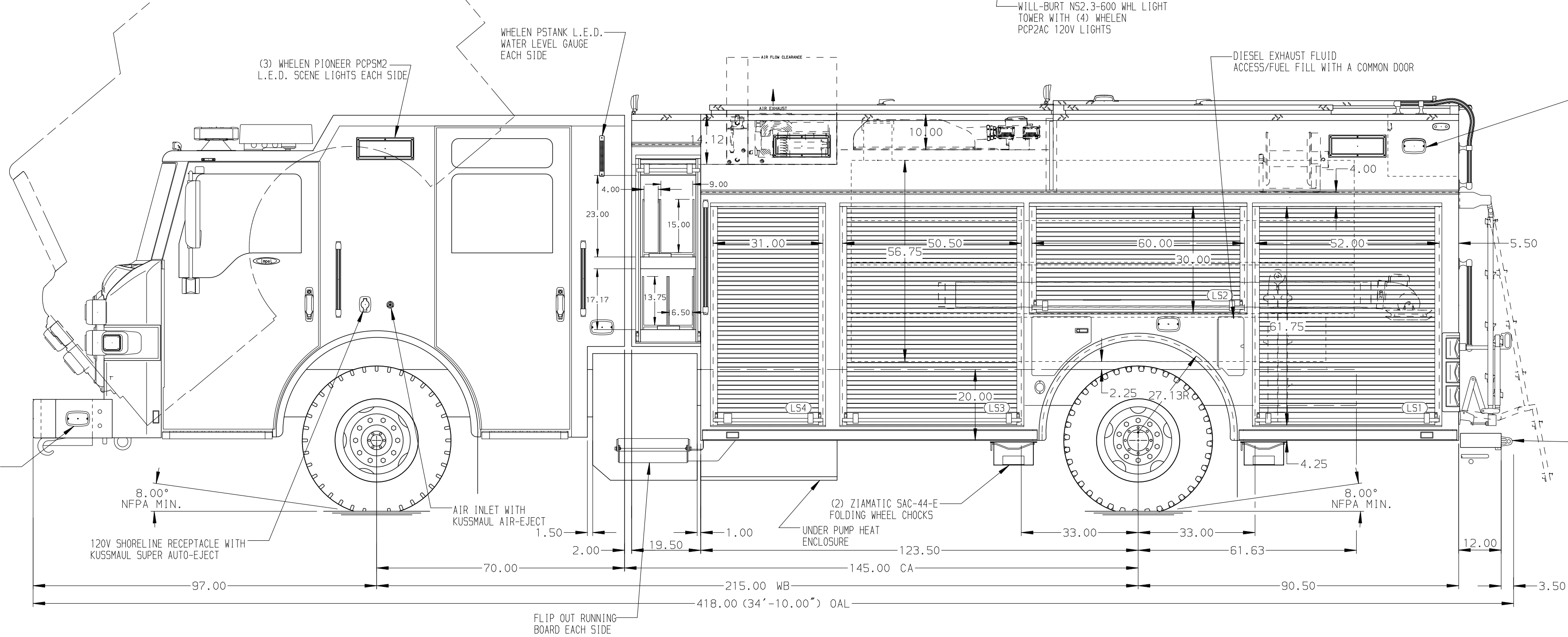


HOSEBED CAPACITIES

- ① 600' OF 5.00" HOSE
- ② 400' OF 3.00" HOSE
- ③ 150' OF 1.75" HOSE



ALUMINUM BODY

SIDE ROLL AND FRONTAL IMPACT PROTECTION

NOTE
DIMENSIONS SHOWN ARE APPROXIMATE AND ARE SUBJECT TO MINOR DEVIATIONS AS MAY OCCUR OR BE NECESSARY IN CONSTRUCTION. MINOR DETAILS NOT SHOWN.

1. BATTERY CHARGER LOCATED IN L53
2. BATTERY CHARGER INDICATOR LOCATED AT DRIVER'S SIDE STEP AREA
3. PULL STRAP ON DOOR IN L51, L52, L53, L54, R51, R52, R53, R54, AND ROLL UP DOOR EACH SIDE FOR CROSSLAYS
4. FULL WIDTH/DEPTH ADJUSTABLE SHELVES TWO IN L53 AND R51 AND ONE IN L51, R53, AND R54
5. ONE ADJUSTABLE TILTING SLIDE-OUT TRAY IN L53
6. ONE FLOOR MOUNTED SLIDE-OUT TRAY IN B1, R51, AND R54
7. ALUMINUM SWING-OUT TOOLBOARD WITH PAC TRAC IN L52
8. CTECH THREE DRAWER ASSEMBLY IN L53
9. LITTLE GIANT VELOCITY MODEL 13 LADDER STORED IN L51
10. ONE HORIZONTAL PARTITION IN B1

11. PAC TRAC ON THE REAR WALL OF L52 AND R52
12. ONE ADJUSTABLE VERTICAL PARTITION IN B1
13. ONE VERTICAL BOLT-IN PARTITION BETWEEN COMPARTMENTS L51-B1 & R51-B1
14. ONE VERTICAL PARTITION IN L51
15. ONE VERTICAL PARTITION (SPECIAL HEIGHT) IN L53
16. MIC AND SPEAKER COMPARTMENT IN THE PUMP OPERATORS PANEL
17. CIRCUIT BREAKER PANEL IN L53
18. ONE AKRON MODEL ERWC-15-10 ELECTRIC REWIND CORD REEL WITH 200' OF 10/4 CABLE IN LH1
19. 120V 6-PLACE RECEPTACLE STRIP IN EACH EMS CABINET

REV	DATE	BY	CH	IMPEL
12JUN19	KLE	KW1	MAKE	
24MAY19	LST	PJP	PIERCE	
26APR19	LST	RWA	MODEL	

		JOB NO.	33682
		SCALE	DATE
TITLE	1500-D-1025P, 1000 GAL OF WATER W/ 25 GAL FOAM CELL 214" PUC RESCUE, LADDERS THRU BODY, (3) X-LAYS	DRAWN BY	LST
FOR	WAUPACA AREA FIRE DISTRICT WAUPACA, WISCONSIN	CHECKED BY	AZA
DWG NO.	33682AD	SHEET SIZE	SHEET NO.
		D	1 OF 1