

## Panel Overlap Detail Snap Seam Option



- 1. Clip System:** Fixed or Floating clip systems available
- 2. Substrate:** Can be used over open framing with a max span width of 60". Plywood substrate material shown.
- 3. Underlayment:** High Temp Ice & Water
- 4. Clip Relief**

**Roof Coverage** 12", 16" & 17.5"

**Panel Gauges** 22\*, 24\*

**Fastener Options** Concealed Clip System

**Panel Length** Up To 40' Shop Production  
100'+ Run Onsite

**Rib Height** 2"

**Roof Slope** Minimum 3:12 in Snap Seam  
Minimum 1/2:12 in Mechanical Seam  
w/ Hot Melt Seam Mastic

**Wind Uplift Rating** ASTM E-1592 & UL580

**Air Leakage** ASTM E-1680

**Water Penetration** ASTM E-1646

**Water Penetration under Static Water Pressure Head** ASTM E-2140

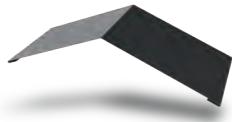
**Warranty** Based on Paint System

\* Grade 50

Version 1.1, 8/2020



Vented/Non-Vented Ridge Cap



Hip Ridge



W Valley



Transition - High to Low



Transition - Low to High



Open Prow Gable



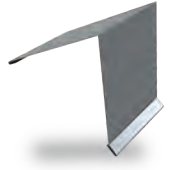
Mini Gable



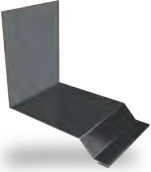
Eave



Style D Trim



Mini Top Cap



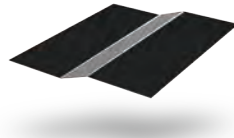
Sidewall



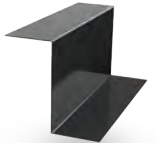
Endwall



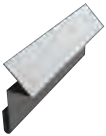
Fascia



Offset Cleat



Z Metal



Rake Slide



Vented Ridge Air Dam



Gutter Eave Trim



Gutter Strap

