

Inspiring Designs

A GUIDE TO INCORPORATING METAL



TABLE OF CONTENTS

About Us	1
Benefits of Metal & Purpose	2
About the Colors & Trends	3
Mountain Modern	4
Log Cabin	5
Contemporary	6
Farmhouse	7
Ranch	8
Craftsmen	9
Sustainable Building	10
Learn More	11





ABOUT US

Since 1996, Bridger Steel has been exceeding expectations and creating innovative uses for metal panels. When our owner and founder Dennis Johnson realized people need more access to the high-quality metal panels, Bridger Steel was born right outside of Bozeman, Montana.

Today, Bridger Steel is continually improving and working to change the way metal panels can be used — aiming to offer inspiration by creating long-lasting and beautiful metal projects! With unmatched customer service, nationwide shipping, and stores in eight different locations in the US, we've worked alongside builders, architects, and homeowners to create stunning projects with our metal panels.

With a wide variety of colors, styles, and panel profiles available, there's a metal panel to fit every project's unique needs. Each panel is made with the highest-quality, US-sourced steel so you never have to sacrifice strength for style.

Bridger Steel is a family full of problem-solvers, innovators, dreamers, and doers, and we never take "no" for an answer — just like our owner. Whether you need metal panels for an interior, exterior, roofing, or siding project, our team can help you reach your goal. We're there with you every step of the way to offer solutions, provide recommendations, and exceed your expectations.

METAL BENEFITS

The benefits of using metal panels on residential homes cannot be understated. Whether you're using metal panels for roofing or siding, you can expect the following benefits:

Durability — Metal is one of the toughest and strongest materials on the market. It's ability to withstand harsh environments and acclimate to any weather condition all while resisting cracking, corroding, and warping make it a top choice for homeowners. Whether you live in a heavy snowfall or high-speed wind area, metal will last.

Longevity — Metal's lifespan is almost too good to be true. Homeowners who install metal roofing or siding can expect it to last between 40 and 70 years, and we've even seen some last for over 100 years! The warranties are just a bonus.

Energy Efficiency — Homeowners with metal roofing and metal siding have seen up to 25% savings in energy costs. Metal's ability to reflect the sun's UV rays rather than absorbing them is just one reason they're an energy-efficient material choice.

Low Maintenance — Metal panels are low maintenance, it's as simple as that. Since they're high-quality and high-performance, monthly and even yearly maintenance isn't required. Homeowners can usually just do a routine check to ensure their roof or siding is able to perform to its best ability.





DESIGN & COLOR TRENDS

Each year, Bridger Steel analyzes rising trends in exterior and interior home design. One trend that looks to be continuously popular is highlighting natural light and adding texture to give a home depth. The use of dark, rich colors like Matte Black and Steel Gray Rawhide are continuing to remain popular because they easily give a modern look to both the interior and exterior of a home.

A newer, rising trend is the idea of mixing two design styles together to create one harmonious look. Craftsman style has become a blend of modern and contemporary, while log cabins have begun incorporating more modern elements as well.

Expect to continue seeing sustainable building practices remain popular through the future of building as energy efficiency and eco-friendly choices are prioritized. Cool roofing systems and solar panels are expected to increase in popularity as more and more homeowners make the move to sustainability.

THE PURPOSE OF THIS GUIDE

Bridger Steel has created a design and color trends guide based on the interior and exterior growing trends in the industry each year. Our goal is to inspire you to use metal panels in ways you never thought possible — and more specifically, use metal in design styles you never thought would work. We offer you realistic options that come together harmoniously and complement one another while providing you with the textures, styles, and tools you need to make your vision a reality.

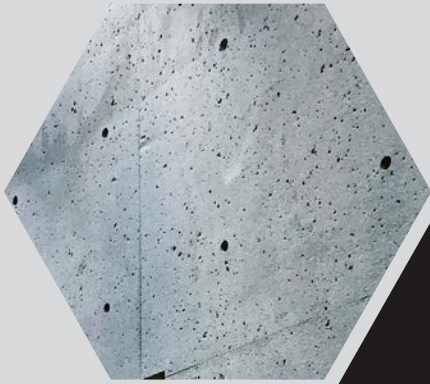
How to read the design guide — Each design trend is based around the color/finish in the center of the page. The surrounding images are examples of how to execute and achieve the style in a home. Each design trend isn't limited to the materials or colors listed, but are instead meant to serve as inspiration for you to recreate the style in your own home through your own unique taste.



MOUNTAIN MODERN

Finish: Matte Black

Incorporating open floor plans, raw materials, and dark, neutral tones, mountain modern design creates a timeless look that makes living in the mountains easy. Raw materials like stone and cement easily complement the surrounding environment, while using darker colors like Matte Black, make open floor plans and bright, open windows pop. Focus on highlighting natural light and mixing rustic with modern design elements.



LOG CABIN

Finish: A606 Truten™

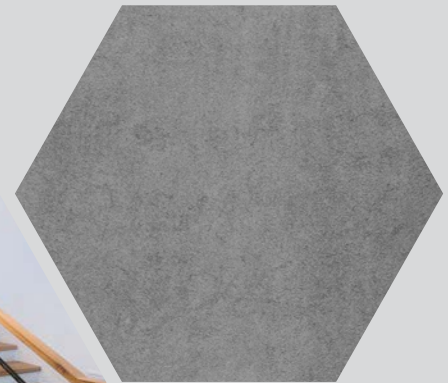
Classic charm, cozy woodwork, and earthy tones bring a log cabin design together. This design works well off its surrounding environment and nature to make the interior feel just like the exterior looks. Pairing the coziness of fireplaces and floor-to-ceiling wood, log cabins easily create that “tucked away in the woods” feeling. Colors like A606 Truten™ Weathering Steel harmonize with surrounding trees, and big pavers match perfectly with the homeiness of a front porch.



CONTEMPORARY

Finish: Vintage

Contemporary home design has made a splash over the past few years. The clean, bold lines, fun textures, and minimalist feels of siding, stucco, brick, and wood bring an old-fashioned home into the new decade. This design style focuses on monochromatic color schemes, like Vintage, and minimal ornamentation. Blending airy outdoor spaces with open windows emphasizes this style's focus on energy efficiency. Contemporary designs tend to blend a number of new trending styles together to create one simple, harmonious look.



FARMHOUSE

Finish: Old Zinc Gray

This design trend has swept the nation and is still climbing as one of the most popular trends. With a blend of country-chic and modern simplicity, farmhouse style is the perfect blend of clean and rustic. With features like eat-in kitchens and wrap around porches, these homes focus on light, neutral colors to accentuate small pops of color, like Old Zinc Gray, in order to draw attention to the charmingness of the home. Farmhouse style is the perfect balance between old and new.



RANCH

Finish: Dark Bronze

Ranch style homes radiate a classic, family feel. With asymmetrical designs and a focus on combining different textures like bricks and wood, this design style merges indoor-and-outdoor living with patios, open floor plans, and picture windows. You'll find wood beams, glass doors, and deep, saturated colors like Dark Bronze easily make a ranch house feel like a home. Ranch style homes are built to be convenient, and that's why this design trend has remained popular for years.



CRAFTSMAN

Finish: Steel Gray Rawhide

Craftsmen's rich, historical style is moving into a more modernized version with exposed beams, muted colors like Steel Gray Rawhide, and the utilization of a nice mixture of different elements such as wooden shakes and stones. Built-in furniture and light fixtures help economically utilize every inch of a home, while open floor plans and bright entryways give off a "welcome home" feel.

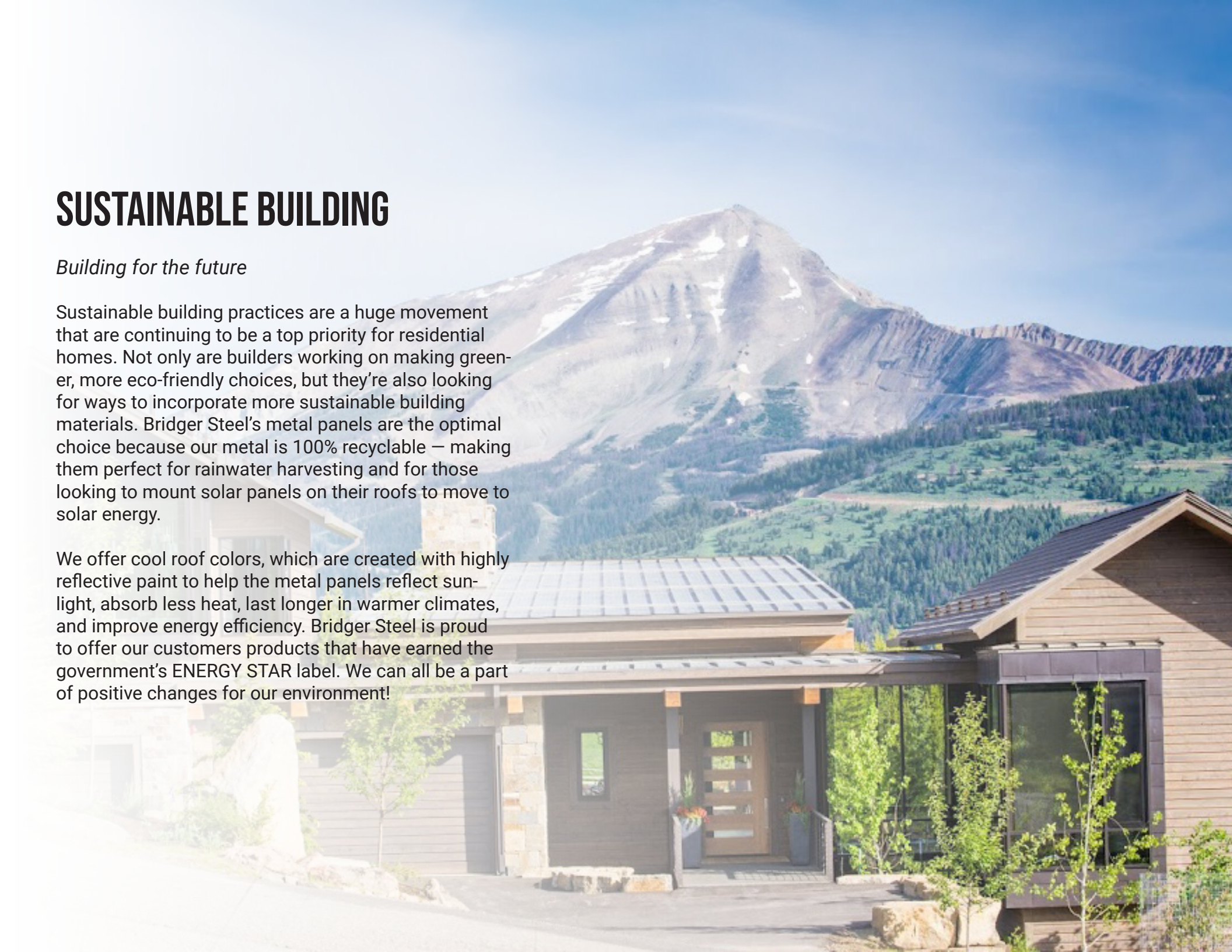


SUSTAINABLE BUILDING

Building for the future

Sustainable building practices are a huge movement that are continuing to be a top priority for residential homes. Not only are builders working on making greener, more eco-friendly choices, but they're also looking for ways to incorporate more sustainable building materials. Bridger Steel's metal panels are the optimal choice because our metal is 100% recyclable — making them perfect for rainwater harvesting and for those looking to mount solar panels on their roofs to move to solar energy.

We offer cool roof colors, which are created with highly reflective paint to help the metal panels reflect sunlight, absorb less heat, last longer in warmer climates, and improve energy efficiency. Bridger Steel is proud to offer our customers products that have earned the government's ENERGY STAR label. We can all be a part of positive changes for our environment!



LEARN MORE

Bridger Steel's team of experienced Product Specialists are ready to help you create your next project. We will work directly with you to bring your vision to life. From the beginning stages to the final touches, our team will be there every step of the way.

Get connected with your regional Specialist today by calling 1.833.STEEL.US or visiting www.bridgersteel.com.