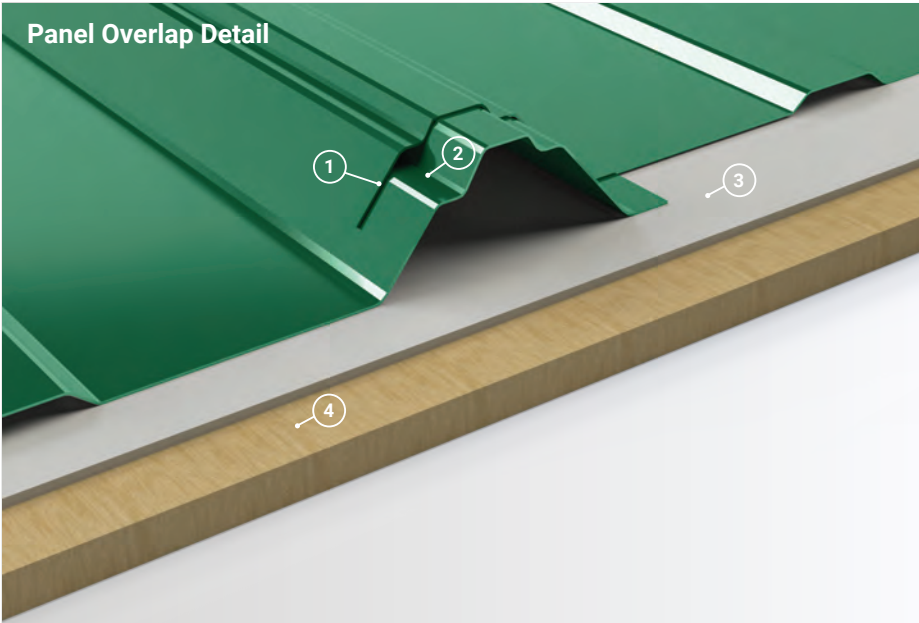


Panel Overlap Detail



- 1. 5 Degree Overbend:** Ensures tight overlap between panels.
- 2. Anti-Siphon Groove:** Creates an internal air gap at panel overlap to help prevent water intrusion.
- 3. Underlayment:** High Temp Ice & Water shown. For use at eaves and valleys.
- 4. Substrate:** Plywood substrate material shown. Can be used over open framing with max width span of 36".

Roof Coverage 36"

Wall Coverage 36"

Panel Gauges 26*, 29*

Fastener Options Exposed

Panel Length 3' to 40'

Rib Height 0.75" at 9" Centers

Roof Slope Minimum 3:12 or Greater with Mastic

Impact Rating UL 2218

Wind Uplift Rating ASTM 1592, UL 580

Warranty Based on Paint System

For more information 1.833.STEEL.US

* Grade 80

Version 5.1, 4/2021



Vented/Non-Vented Ridge Cap



Hip Ridge



W Valley



Transition - High to Low



Transition - Low to High



Open Prow Gable



Closed Prow Gable



4" Mini Gable



6" Gable



Snowbreak



4" Eave



6" Eave



Style D Eave - 2" & 4"



4" Mini Top Cap



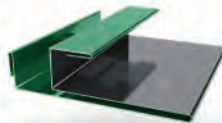
6" Top Cap



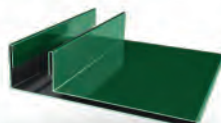
J Trim



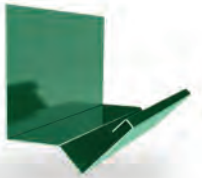
Double J Trim*



F & J Trim



F Trim



Head Trim



Side Wall



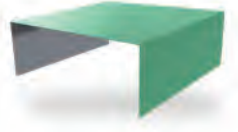
End Wall



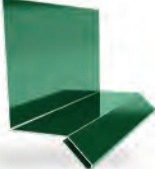
Outside Corner



Inside Corner



Door Cap



Base Drip



Double Base Drip*



Broom Base



Wainscot



Fascia
* Color On Both Sides

