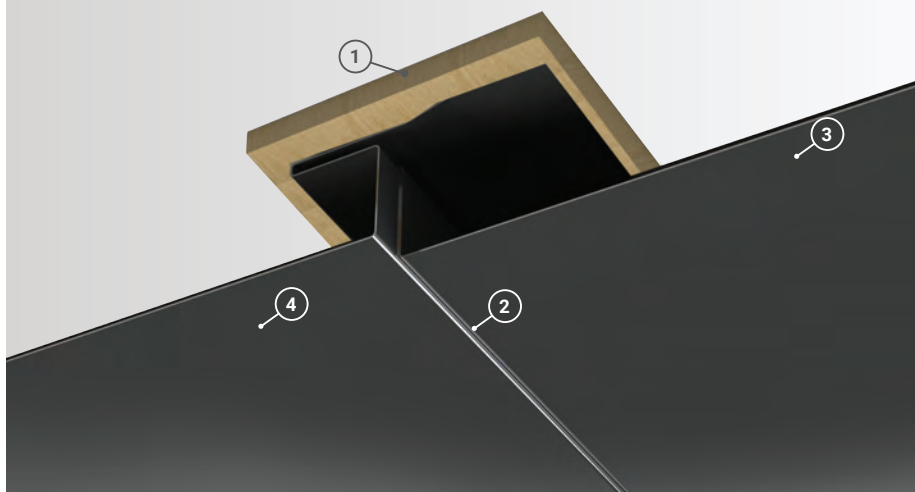


Panel Overlap Detail

- 1. Soffit Substrate:** Can be installed to wood framing, metal framing or plywood sheathing
- 2. Reveal Width:** No reveal shown, can be manufactured with up to 1" of reveal between panels in 1/4" increments.
- 3. Perforations:** Available in perforated version with air flow data available
- 4. Stiffeners:** Available in single v, double v, or no stiffener options



Soffit Coverage 12" or 16"

Reveal Widths Flush to 1"

Panel Gauges 22, 24*

Fastener Options Concealed Fastener

Panel Length 4' to 30'+

Relief Height 7/8"

Variegated Assembly Available

Air Flow Data Available Upon Request

Perforations Available in 24 Gauge

Warranty Based on Paint System

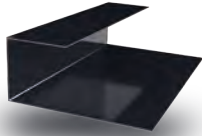
For more information 1.833.STEEL.US

* Grade 50

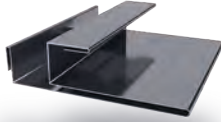
Version 5.2, 12/2021



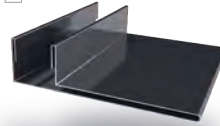
Double J Trim ***



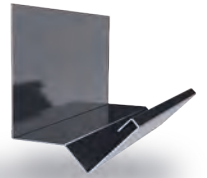
Reverse J Trim *



F & J Trim



F Trim



Head Trim



J Trim



Outside Corner



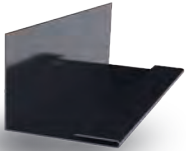
Outside Corner 2



Inside Corner



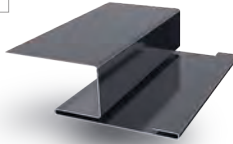
Inside Corner 2



Inside Corner Closure



Fascia



H Trim **

**Additional Trim
Profiles Available
By Request**

* Used with Outside & Inside Corner 2 and H Trim

** Used with Reverse J Trim

*** Color On Both Sides

