

STONE

BRICK



A **BORAL**® Brand



Where Believability Matters. There is a unique intersection that exists between nature and design, where the artists of our world engage in creating the spaces where we work, live and entertain. It is at this intersection where Eldorado Stone's undeniable passion lives. A commitment to authenticity...*where believability matters.* Every product hand-crafted by artisans to a level of precision, rarely seen. What memorable space will you create?



A **BORAL**® Brand

Silver Lining Stacked Stone



PRODUCTS

Share Your Project

Architectural Solutions

Stone & Brick Brochure

INSTALLATION

Installation Guidelines

Invite the Outdoors In

It's All About Curb Appeal

TECHNICAL

Online Directory

CEU-AIA Course Offerings

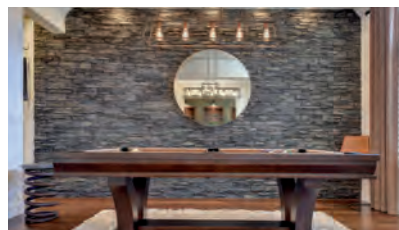
FAQs



A BORAL® Brand



SHARE YOUR PORTFOLIO



You Do Great Work and take pride in the quality of your projects!

We invite you to share your designs. Upload any Eldorado Stone or Brick project for a chance to be included in our Designer's Portfolio Gallery. Open to all Trade Professionals, this is a great way to reach hundreds of thousands of Eldorado website visitors each year.

- Be seen by industry leaders across the nation
- Connect with new customers
- Reach thousands of visitors each month
- Share your creativity with Eldorado Stone
- Let our visitors share your work across the web



A **BORAL**® Brand

Upload your project information at:
<https://www.eldoradostone.com/share-portfolio/>

Premium Architectural Solutions for Inspired Living

Explore a diverse range of industry-leading brands and high-performance manufactured products.

The Stone Division of Boral North America



The Boral Stone Division offers an extensive portfolio of architectural stone veneer to meet the needs of any project level, style and lifestyle.

No other material offers the depth, complexity of color, pattern, and tactile distinction as architectural stone veneer. Our product portfolio provides limitless design opportunities that suit a wide range of styles and budgets, making it easy to enhance your project's aesthetic using natural textures and authentic color palettes that are virtually indistinguishable from stone and other natural materials.

 CULTURED STONE®

culturedstone.com

 ELDORADO STONE®

eldoradostone.com

 DUTCH QUALITY STONE
CRAFTSMANSHIP BORN OF TRADITION

dutchqualitystone.com

VERSETTA
STONE®

versettastone.com

 STONECRAFT
INDUSTRIES

stonecraft.com

 KINDRED®
OUTDOORS + SURROUNDS

mykindredliving.com

For more information & design inspirations visit boralamerica.com/stone.



Our Added Value

Backed by decades of industry leadership and manufacturing expertise, Boral is committed to providing products that inspire, attract, and add value. With six diverse brands to choose from, no other manufacturer can match the range and selection of design solutions we offer.

Scale & Availability—We manufacture the products your customers demand in the regions where you build and have the capability to scale up as your business grows.

Brand Equity—As the original manufacturers of architectural stone veneer, we take pride in having built North America's most recognized brands and delivering high-quality architectural solutions through a breadth of combined portfolios.

Expertise—We are committed to being a driving force in the decorative stone industry. From increasing installation knowledge, to Warranty and Code Compliance training, to a leadership role with the National Concrete Masonry Association, our teams put an unmatched depth of technical and practical expertise in your hands.

Design Solutions—Through ongoing research and development, we not only design products that are innovative and beautiful but are engineered to solve design and installation challenges.



Additionally, our collections have expanded beyond stone to include modern profiles that resemble other popular materials such as tile, brick and wood. With numerous options to choose from, we have the perfect solution for achieving a sleek and modern look, quaint country feel, formal atmosphere or casually elegant ambiance.

Nationwide Distribution—Unlike most local and regional manufacturers, we have partnerships that span across the country, allowing for popular products to be stocked on the ground in each market. That means you can expect the product to be available where you build.

Dedicated Team—We take pride in not only working at the corporate level with our dedicated national team, but also bringing value at the local level with more than 90 sales and technical resources focused on supporting your projects. Whether you need technical knowledge, support with national purchasing optimization, or help improving project efficiencies, with Boral, you have a partner you can rely on.

About Boral North America

At Boral North America, a division of Boral Limited, we offer a diverse array of premium brands under one banner. Our innovative manufacturers and passionate teams help builders, specifiers and influencers grow their businesses with the highest quality architectural solutions and industry leadership in a variety of categories, including roofing, stone veneer, brick, siding, trim, shutters and windows.

For more information about Boral North America visit boralamerica.com.

About Boral Stone Division

The Boral Stone Division is the largest producer of architectural stone veneer in North America. With six unique brands featuring traditional and modern products, our natural textures and authentic color palettes offer an easy solution to enhance the aesthetic and tactile appeal of any project.

For more information about the Boral Stone Division visit boralamerica.com/stone.



A modern living room with a high ceiling featuring exposed wooden beams. The focal point is a large fireplace constructed from light-colored, rectangular stone veneer. To the right of the fireplace, a vertical column of stacked logs is visible. A round, dark-stained wooden coffee table sits in the foreground, holding a small potted plant, a candle, and a bowl of magazines. In the background, a kitchen area with light wood cabinets and a dining table with white chairs are visible through a large window that looks out onto a lush green landscape.

THE MOST BELIEVABLE
ARCHITECTURAL STONE VENEER
IN THE WORLD.™



A **BORAL**® Brand



THE MOST BELIEVABLE ARCHITECTURAL STONE VENEER IN THE WORLD



Believability is at the very core of our company philosophy. For over 50 years, Eldorado Stone has been refining the art of architectural stone veneer. When you set your eyes on Eldorado Stone, it looks authentic, natural and—most of all—believable. Take a closer look at Eldorado Stone and you'll see the difference: unmatched depth and variation of colors, crisp textural details and one of the most extensive selections of stone profiles and colors in the world.

Montecito Cliffstone (pg. 38) with a dry-stack grout technique.
Front Cover: Vantage30 White Elm (pg. 27) with a dry-stack grout technique.

Rustic...



to Refined

Experience the limitless design opportunities Eldorado Stone makes possible with over 150 highly authentic architectural stone and brick veneers.









TOP: Seashell Cut Coarse Stone (pg. 31), Ocean Floor LedgeCut33 (pg. 32) and Linen European Ledge (pg. 33) with a dry-stack grout technique.
 BOTTOM: Black River Stacked Stone (pg. 34) with a dry-stack grout technique.

Silver Lining Stacked Stone (pg. 35) with a dry-stack grout technique.
 © 2019 King's Court Builders











Whitebark Cliffstone (pg. 39) with a dry-stack grout technique.



Ironside TundraBrick (pg. 59) with a standard grout technique.



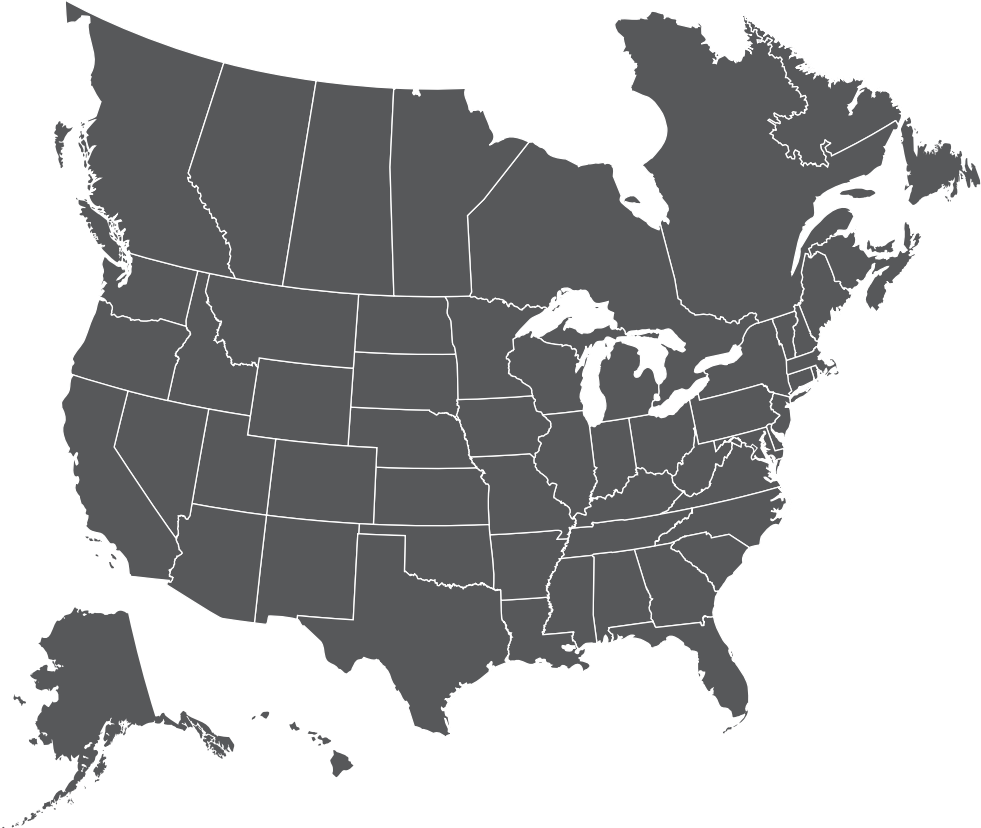
Monument SierraCut24 (pg. 30) with a dry-stack grout technique.



Oyster Cut Coarse Stone (pg. 31) with a dry-stack grout technique (6" h stones only/custom selection).
© 2016 Brett Beyer Photography



NATIONWIDE STONE VENEER



Nationwide profiles are among our most popular stones and are available coast to coast, transcending geography. Whether you’re remodeling a farmhouse in Pennsylvania, building a lodge in Colorado, restoring a ranch in Arizona or renovating a coastal home in California, there’s a Nationwide profile—or combination of Nationwide profiles—for the job.

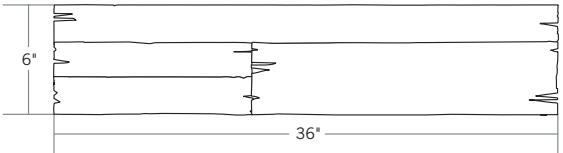
For product availability outside the Continental United States & Canada, visit www.eldoradostone.com to find your local distributor.

- NATIONWIDE Pg. 24-45
 - EASTERN Pg. 46-49
 - WESTERN Pg. 50-53



VINTAGE RANCH™
WOOD PLANK

Enjoy the warmth and inviting texture of **Vintage Ranch**, our authentic interpretation of reclaimed barn wood. This American classic is composed of hand-selected boards culled for their celebrated patina and timeless beauty.



Milled to 2", 4" and 6" heights with subtle depth variations, **Vintage Ranch** has been designed as a panelized system for a quick installation process.



Parchwood Vintage Ranch



Foxwood Vintage Ranch



Dawnwood™ Vintage Ranch



VANTAGE 30



Cumulus Vantage30 using a dry-stack grout technique.



Cumulus Vantage30



Stormcloud Vantage30



White Elm Vantage30



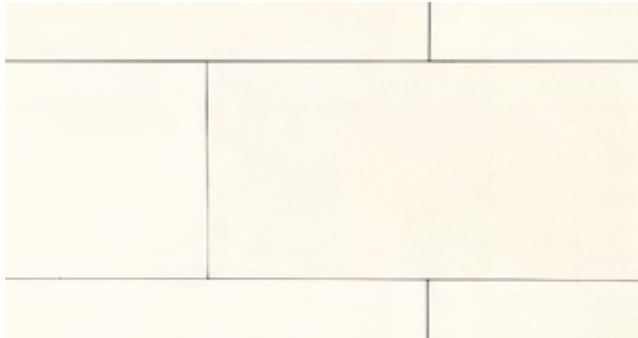
LONGITUDE 24



Foggy Meadow Longitude24

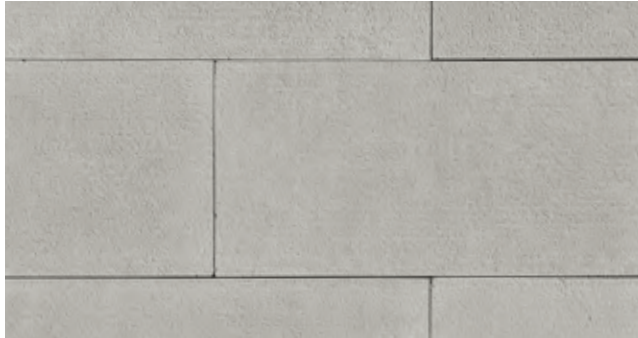


Silent Grey Longitude24



Snowdrift Longitude24

ZEN 24



Nickel Zen24



Soft Light Zen24



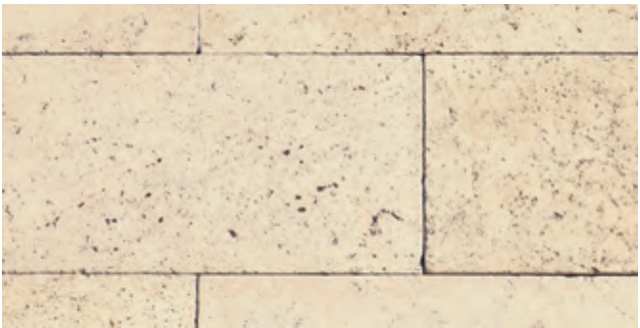
Combine stone profiles to create unique textures and colors. The raked faces of **Soft Light Zen24** adds subtle texture and depth to the smooth surface of **Snowdrift Longitude24**.



MARQUEE 24



Dove Tail Marquee24



Sanderling Marquee24

SIERRA CUT 24



Monument SierraCut24



Zenith Grey SierraCut24

COASTAL REEF®



Pearl White CoastalReef



Oyster Cut Coarse Stone using a dry-stack grout technique.

CUT COARSE STONE®



Madrona Cut Coarse Stone



Oyster Cut Coarse Stone



Seashell Cut Coarse Stone



LEDGECUT33®



Beach Pebble LedgeCut33



Birch LedgeCut33



Ocean Floor LedgeCut33



Sage LedgeCut33



Whitecap™ LedgeCut33

EUROPEAN LEDGE®



Cottonwood® European Ledge



Glacier European Ledge



Iron Mill European Ledge



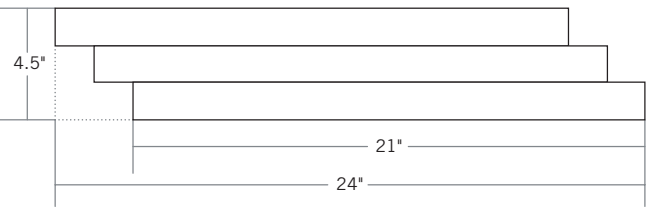
Sea Cliff™ European Ledge



Sidewalk European Ledge



Zinc European Ledge



European Ledge creates a perfect fusion of old-world stonework and modern design. The 1.5" precision-cut ledge stones are molded into 4.5" h x 24" w panels. The stair stepped edge creates a tight-fit, eliminating unsightly vertical joints.



Stacked Stone



Alderwood® Stacked Stone



Black River® Stacked Stone



Nantucket Stacked Stone



Silver Lining Stacked Stone



Castaway® Stacked Stone



Chapel Hill® Stacked Stone



Dark Rundle® Stacked Stone



Daybreak Stacked Stone



Koryak Ridge™ Stacked Stone



Cascade® Rustic Ledge

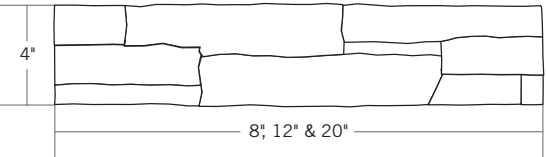


Clearwater Rustic Ledge



Sawtooth® Rustic Ledge

Stacked Stone CONTINUED



Individual **Stacked Stone** panels vary greatly in the cut shapes within their layouts and are available in three different lengths to help avoid repetition while offering quick and convenient installation.

Rustic Ledge®



MOUNTAIN LEDGE



Durango® Mountain Ledge



Mesa Verde® Mountain Ledge



Sierra® Mountain Ledge



Yukon® Mountain Ledge

MOUNTAIN LEDGE PANELS



Pioneer® Mountain Ledge Panels



Russet® Mountain Ledge Panels



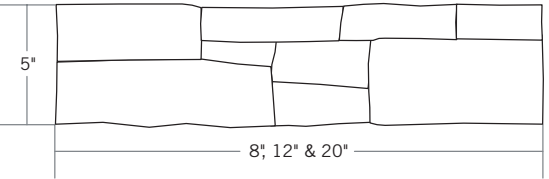
Silverton® Mountain Ledge Panels



Whiskey Creek® Mountain Ledge Panels



Durango Mountain Ledge using a dry-stack grout technique.



Mountain Ledge Panels quickly install with 5" heights and varying stone lengths. The rustic surface textures and random stone heights create a highly authentic appearance.



CLIFFSTONE®



Boardwalk Cliffstone



Lantana Cliffstone



Manzanita Cliffstone



Mesquite Cliffstone



Montecito Cliffstone



Whitebark Cliffstone

LIMESTONE



Grand Banks Limestone



York Limestone



York Limestone with a dry-stack grout technique.
Photo Credit: Nat Rea



BLUFFSTONE



Coos Bay Bluffstone



Mineret Bluffstone



Prescott Bluffstone



Prescott Bluffstone with a dry-stack grout technique.

ROUGH CUT



Autumn Leaf RoughCut



Casa Blanca RoughCut



Loire Valley RoughCut



Moonlight RoughCut



Vineyard Trail RoughCut



COUNTRY RUBBLE



Bella Country Rubble



Cognac Country Rubble



Polermo Country Rubble

CYPRESS RIDGE



Catania Cypress Ridge



Countryside Cypress Ridge



Orchard Cypress Ridge

FIELDLEDGE



Andante Fieldledge



Padova Fieldledge



Meseta Fieldledge

HILLSTONE



Lucera Hillstone



Verona Hillstone



Shadow Rock



Bronze Shadow Rock



Somerset Shadow Rock



Teton Shadow Rock

River Rock



Colorado River Rock



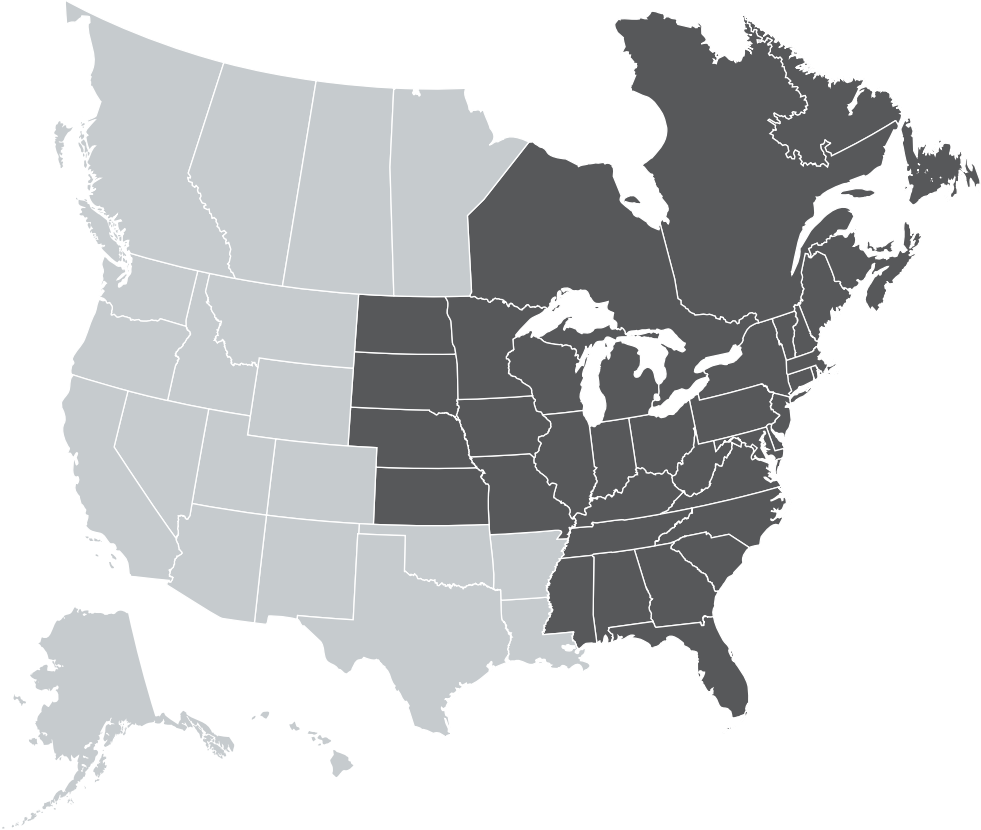
Yakima River Rock



Teton Shadow Rock using a dry-stack grout technique.



EASTERN REGIONAL STONE VENEER



- Alabama

Connecticut

Delaware

District of Columbia

Florida

Georgia

Illinois

Indiana

Iowa

Kansas

Kentucky

Maine

Maryland

Massachusetts

Michigan

Minnesota

Mississippi
- Missouri

Nebraska

New Hampshire

New Jersey

New York

North Carolina

North Dakota

Ohio

Pennsylvania

Rhode Island

South Carolina

South Dakota

Tennessee

Vermont

Virginia

West Virginia

Wisconsin

The Eastern Region has a rich tradition of building with stone since colonial times. The abundance of raw materials was of great use to the skilled European stone masons who settled here.

For product availability outside the Eastern United States & Eastern Canada, visit www.eldoradostone.com to find your local distributor. Regional profiles available in states & provinces indicated above; additional shipping charges apply if ordered outside this region.

BLUFFSTONE



Olive Grove Bluffstone

COUNTRY RUBBLE



Millstream Country Rubble

CLIFFSTONE®



Cambria Cliffstone

COASTAL REEF®



Sanibel Coastal Reef

MOUNTAIN LEDGE



Lexington Mountain Ledge



Asheville Mountain Ledge



Charleston Mountain Ledge



L I M E S T O N E



New Haven Limestone

S H A D O W R O C K



Crescent Peak Shadow Rock



Willow Shadow Rock



Chesapeake Shadow Rock

S T A C K E D S T O N E



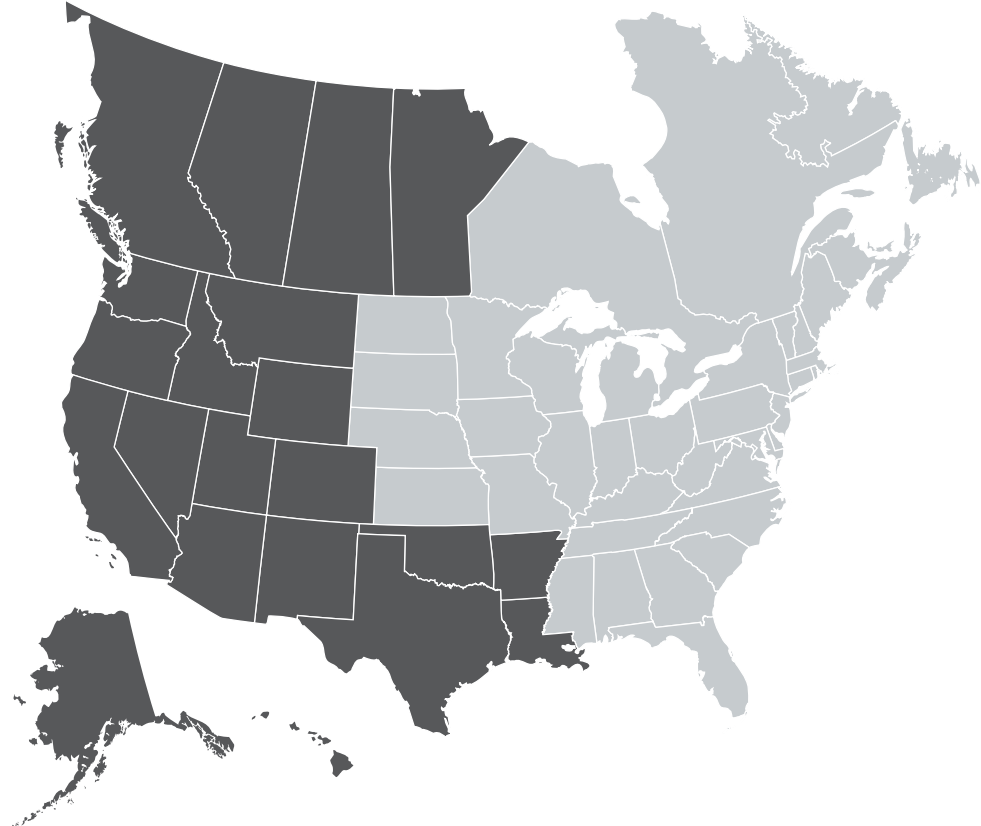
Dry Creek Stacked Stone



Crescent Peak Shadow Rock with a standard grout technique.



WESTERN REGIONAL STONE VENEER



- Alaska
- Arizona
- Arkansas
- California
- Colorado
- Hawaii
- Idaho
- Louisiana
- Montana
- Nevada
- New Mexico
- Oklahoma
- Oregon
- Texas
- Utah
- Washington
- Wyoming

America’s West embraces a diverse architectural palette that mirrors its grand landscapes. The colors, textures and shapes found in this region embody elements of the Pacific coast, Rocky Mountains, Southwest deserts and lush Northwest forests. Our profiles for this region respect the many stone types used across this varied terrain.

For product availability outside the Western United States & Western Canada, visit www.eldoradostone.com to find your local distributor. Regional profiles available in states & provinces indicated above; additional shipping charges apply if ordered outside this region.

COUNTRY RUBBLE



Capri Country Rubble

CLIFFSTONE®



Banff Springs Cliffstone

FIELDLEDGE®



Veneto® Fieldledge

LIMESTONE



Austin Cream Limestone



Shilo Limestone



MOUNTAIN LEDGE



Bitterroot Mountain Ledge



Shasta Mountain Ledge

RIVER ROCK



Rio Grande River Rock

VINTAGE RANCH™

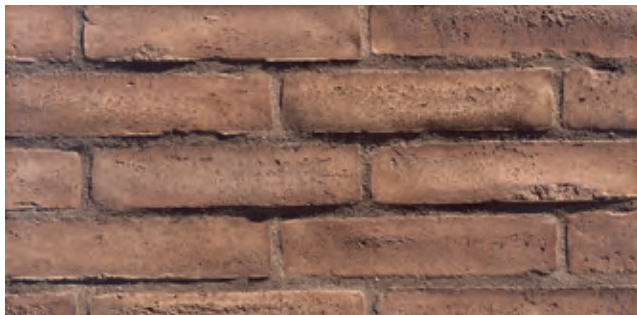


Stratuswood™ Vintage Ranch

MOUNTAIN LEDGE PANELS



Bow Valley Mountain Ledge Panels



Bautista Capistrano Adobe

CAPISTRANO ADOBE



Carmelo Capistrano Adobe

RUSTIC LEDGE®



Sequoia® Rustic Ledge



Saratoga Rustic Ledge

WALL CAPS



Wall Caps approx. 3.5" thick.
Available in 2 sizes:
16" L x 12" D
15.5" L x 7.5" D

RIDGETOP18



Granite Spire Ridgetop18



Whisper White Ridgetop18





Silver Lining Stacked Stone (pg.35) with a dry-stack grout technique





A CHUNK OF HISTORY™



Eldorado Brick isn't simply a great building material; it's a piece of history. Molded from centuries-old European dwellings, Eldorado Brick has distinct earthen textures, irregular size dimensions and comes in both traditional and design-forward colors. Eldorado Brick can help transform any space to your desired style whether it's warm with historical heritage or creative with contemporary sophistication.

Ironside TundraBrick (pg. 59) with a standard grout technique.

TUNDRA BRICK®



Chalk Dusk TundraBrick using a standard grout technique.



Ashland TundraBrick



Chalk Dust TundraBrick



Ironside TundraBrick



Latigo TundraBrick



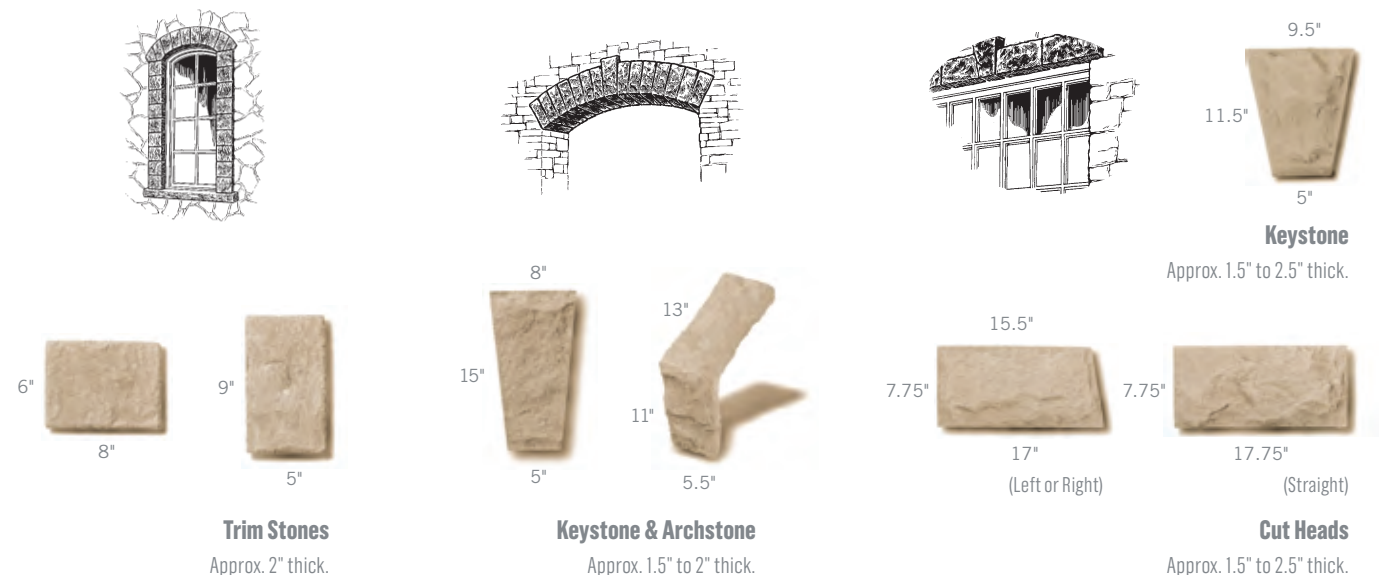
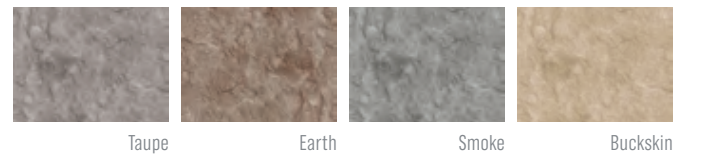
ARCHITECTURAL ACCENTS & ACCESSORIES



It's the final details that make an ordinary project an extraordinary one, and Eldorado Stone Architectural Accents are no exception to this philosophy. Each accent has been created by hand to meticulously emphasize unique color hues and detailed sculptural characteristics... the essence of true masonry craftsmanship.

ASHLAR ACCENTS

Ashlar Accents have been sculpted to create uniform edge details. The consistent shape simplifies the installation process, while providing the characteristics and texture of natural stone. Available in Taupe, Earth, Smoke & Buckskin.



CRAFTSHIELD™

Preserving the Art of Masonry. CraftShield is a protective treatment that preserves the intended artistry and beauty of architectural stone veneer while safeguarding the surface from nature's elements.

Designed for use on concrete and most masonry surfaces including Eldorado Stone and Eldorado Brick veneer, CraftShield goes on wet and dries invisible to the eye.

It's low odor and alkaline-stable formula is ideal for both exterior and interior applications and offers 10-Year Protection to help resist staining, spalling, cracking and other damage related to water intrusion.

Gallon covers 150-200 sq. ft. of surface area.



CHISELED EDGE™ ACCENTS

Historically, masons have worked with natural stone to create unique accent pieces to finalize their projects. Chiseled Edge Accents feature a hand-dressed appearance with a uniform yet rustic detail. Available in Taupe, Earth, Smoke & Buckskin.



Wainscot Sill 90°
8"L (both exterior sides) × 3"D × 2"H (face) to 2.5"H (back)



Wainscot Sill 135°
7.5"L (both exterior sides) × 3"D × 2"H (face) to 2.5"H (back)



Wainscot Sill Straight
19.75"L × 3"D × 2"H (face) to 2.5"H (back)



Hearthstone
20"L × 20"D × 2"H



Peaked Wall Caps
Available in 2 sizes:
20" × 16" (2"H sides with a 3.5"H peak)
20" × 12" (2.375"H sides with a 3.5"H peak)



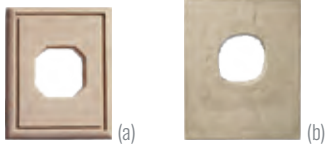
Textured Column Caps
Cap peak approx. 5.5"H.
Available in 3 sizes with or without hole:
26" × 26" (2.5"H sides)
22" × 22" (2.5"H sides)
18" × 18" (2.5"H sides)



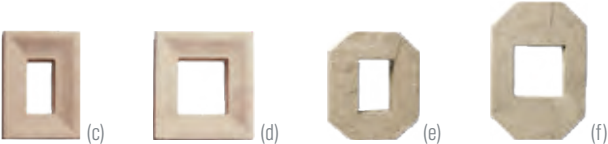
Column & Wall Caps
Column Caps approx. 2.5" thick.
Available in 2 sizes:
30" × 24"
24" × 24"
Wall Caps approx. 2.25" thick.
Available in 3 sizes:
37" × 12"
37" × 9"
37" × 6"

UTILITY ACCENTS

Utility Accents create a simple yet decorative way of transitioning from the utility to the stone or brick veneer. Available in Taupe, Earth, Smoke & Buckskin (see colors above).



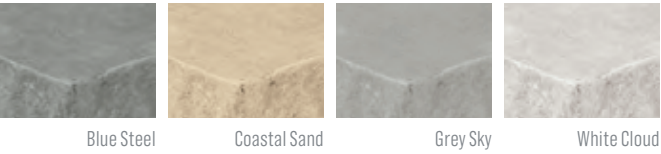
Lightboxes
Approx. 1.75" thick.
(a) 8" × 10"
(b) 9.5" × 11"



Electrical Boxes
(c) 6" × 8" (approx. 2" thick)
(d) 8" × 8" (approx. 2" thick)
(e) 8" × 8" (approx. 1.75" thick)
(f) 8" × 12" (approx. 1.75" thick)

SPLIT EDGE™ ACCENTS

Split Edge Accents feature a 2" guillotined edge to complement our line of modern stones and contemporary color palettes.



Column Caps
Available in 4 sizes:
26"L × 26"D × 2"H
24"L × 24"D × 2"H
22"L × 22"D × 2"H
18"L × 18"D × 2"H



Wall Caps
Available in 2 sizes:
12"L × 30"D × 2"H
9"L × 30"D × 2"H



Hearthstone
20"L × 20"D × 2"H



Wainscot Sill
20"L × 3"D × 2"H (face) to 2.5"H (back)

SNAPPED EDGE™ ACCENTS

Snapped-Edge Accents feature irregular edge details and random undulations that look as if they had been hand chiseled on location. Additionally, each accent features subtle yet contrasting color highlights on the surface and edge details for the ultimate natural appearance. Wainscot Sills have a recessed drip edge on the underside to prevent water from returning behind the stone or dripping onto the face of the stone wall. Available in Walnut, Pewter & Sand.



Column Caps
Available in 3 sizes:
24"L × 24"D × 1.5"H
22"L × 22"D × 1.5"H
18"L × 18"D × 1.5"H



Wall Caps
Available in 2 sizes:
24"L × 14"D × 1.5"H
18"L × 14"D × 1.5"H



Hearthstone
20"L × 20"D × 1.5"H



Wainscot Sill
19.75"L × 3"D × 1.5"H (face) to 2.5"H (back)



ELDORADO PROFILE SIZES

*Measurements are approximate and may vary slightly due to the molding process.

STONE	HEIGHT	LENGTH	AVERAGE THICKNESS	PAGES
Bluffstone	1" - 5"	3 5/8" - 21 1/4"	1-1/2"	40, 47
Cliffstone	1 1/4" - 5 1/2"	4" - 21 1/4"	1-1/3"	1, 10, 18, 38
CoastalReef	4" - 12"	4" - 16"	1-1/3"	30, 47
Country Rubble	2" - 16 1/2"	3 1/2" - 21"	1-3/8"	42, 47, 51
Cut Coarse Stone	3", 6", 9"	12", 18", 24"	1-1/2"	8, 21, 31
Cypress Ridge	1" - 10 1/2"	4" - 21 1/4"	1-1/2"	42
European LedgeSingle Stone	1 1/2"	11"	1-1/2"	8, 33
European LedgePanel	4 1/2"	24"	1-1/2"	33
Fieldledge	1 1/2" - 8"	4" - 19"	1-1/3"	43, 51
Hillstone	1" - 11 1/2"	3" - 16"	1-1/2"	6, 43
LedgeCut33	3"	12", 18", 24"	1-1/2"	8, 32
Limestone	4" - 20 3/8"	1 1/2" - 12 1/2"	1-3/8"	39, 48, 51
Longitude24	11-7/9"	23-5/8"	1"	28
Marquee24	11-7/10"	23-5/8"	1"	4, 30
Mountain Ledge	1" - 4"	3 1/2" - 19"	1-1/2"	36, 47, 52
Mountain Ledge Panels	5"	8", 12", 20"	1-1/2"	37, 52
Ridgetop18	9"	18"	1-3/8"	52
River Rock	2" - 12 1/2"	3" - 14 1/2"	1-1/2"	44, 53
RoughCut	1 1/2" - 11 1/2"	3 1/4" - 18 1/4"	1-1/2"	12, 41
Rustic Ledge	1" - 4 1/4"	4 1/2" - 21 1/8"	1-1/4"	35, 52
Shadow Rock	1 1/8" - 9 1/4"	3 3/8" - 20 3/8"	1-1/4"	44, 48
SierraCut24	11-7/8"	23-5/8"	1-1/2"	20, 30
Stacked Stone	4"	8", 12", 20"	1-18"	4, 8, 14, 22, 34, 48, 55
Vantage30	6"	30"	1-1/4"	27
Vintage Ranch	6"	36"	1-15/16"	25, 53
Zen24	11-7/8"	23-5/8"	1"	28
ADOBE				
CapistranoAdobe	3-1/2"	15-1/2"	1/4"	53
BRICK				
TundraBrick	2-1/2"	7 3/4" - 8"	7/8"	16, 19, 58, 59

Ashland TundraBrick (pg. 59) with an overgrout technique.



Because Eldorado Stone replicates natural stone, variations should, and can be expected. Even though colors in this brochure are as close to the actual stone as possible, photographic and printing techniques — and actual viewing conditions — can alter perception of color. It is recommended to obtain a sample of Eldorado Stone before placing an order.

If you would like more information on prices, availability of stone, the name of your local distributor, or answers to any questions not covered in this brochure, please contact us. We would be happy to assist you with your stone building plans. Detailed installation instructions, specifications, technical information and test data is available upon request.

800.925.1491 eldoradostone.com

Please join us on:



A **BORAL**® Brand



© 2021 Eldorado Stone, LLC
031521





INSTALLATION GUIDELINES

Eldorado Stone endorses and supports the National Concrete Masonry Association – Manufactured Stone Veneer (NCMA-MSV) Installation Guidelines. The mission of the NCMA organization is “To advance the growth of the manufactured masonry veneer products industry through proactive technical, advocacy, and awareness efforts.”

One of the most important projects completed by the NCMA Technical Committee was the development of a highly detailed and carefully researched installation guide. The latest version of that guide can be downloaded at www.eldoradostone.com/resources. These guidelines are intended to share over 50 years of knowledge, experience and understanding regarding the proper installation of manufactured stone veneer products. For any specific or unique installation questions or challenges, including:

- Traditional masonry installation methods
- Installation over cement board using polymer modified mortar
- Installation over thick foam; fastener selection
- Installation of large format profiles

Please contact Eldorado Stone’s Technical Support Service directly at 800.925.1491.



Note: It is important to recognize that Eldorado Stone and Brick veneer products are an adhered veneer or façade which are attached directly to a cementitious substrate for purposes of providing ornamentation and a first layer of weatherization protection. Adhered Concrete Masonry Veneers are not intended as a structural product or a waterproofing element. Most importantly, the real subject matter expert is your local building department and the local building code. Your local building code will supersede all other written or verbal installation guides provided by Eldorado Stone or the NCMA. Go to ncma.org/manufactured-stone-veneer for more information about the NCMA.



A **BORAL**® Brand

Installation Guide and Detailing Options for **Compliance with ASTM C1780**

For Adhered Manufactured Stone Veneer 5th Edition, 4th Printing

NATIONAL
CONCRETE MASONRY
ASSOCIATION



NCM MSV

Figure 3. Wall Assembly Transition

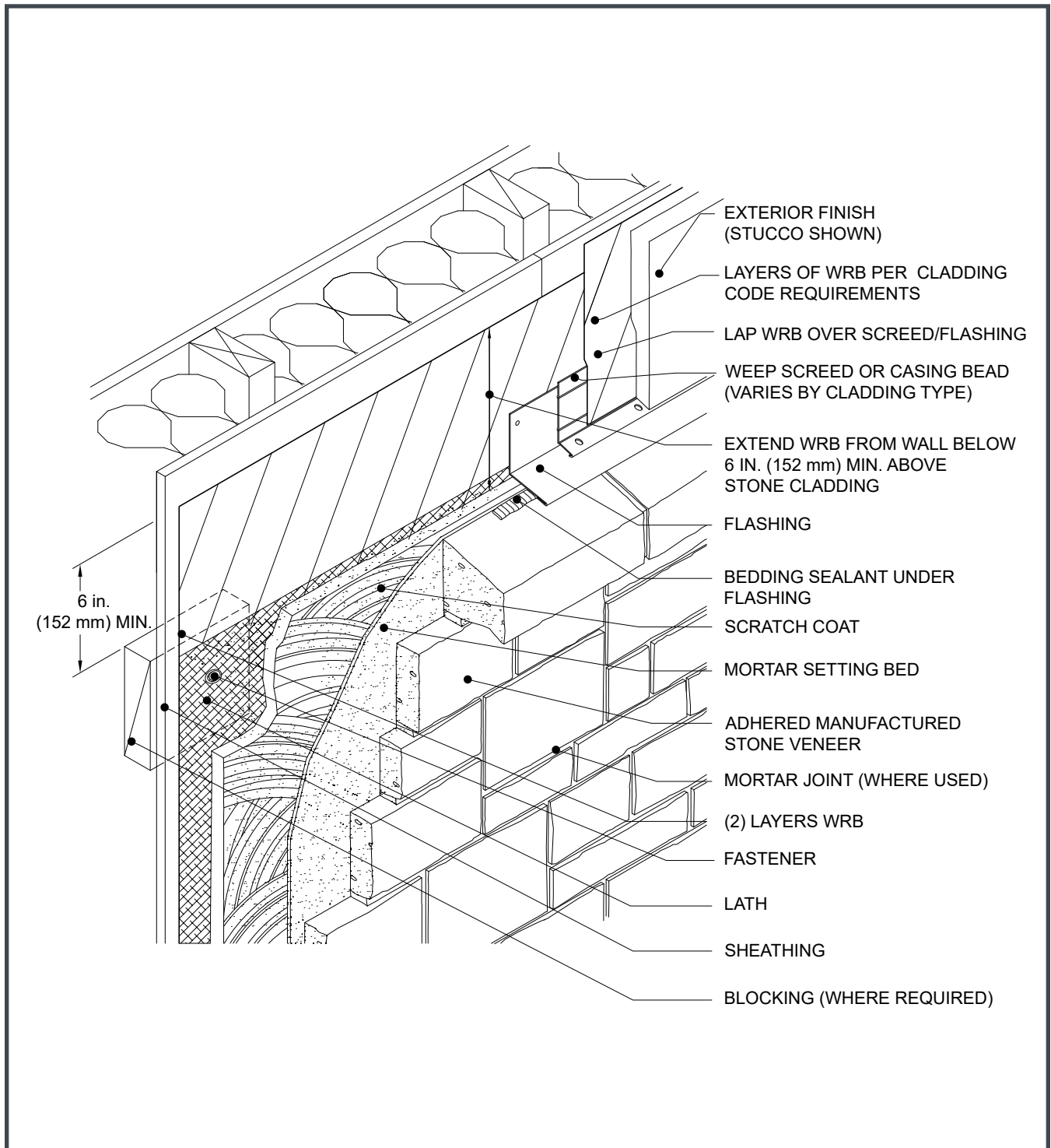


Figure 4a. Typical Frame Wall Section

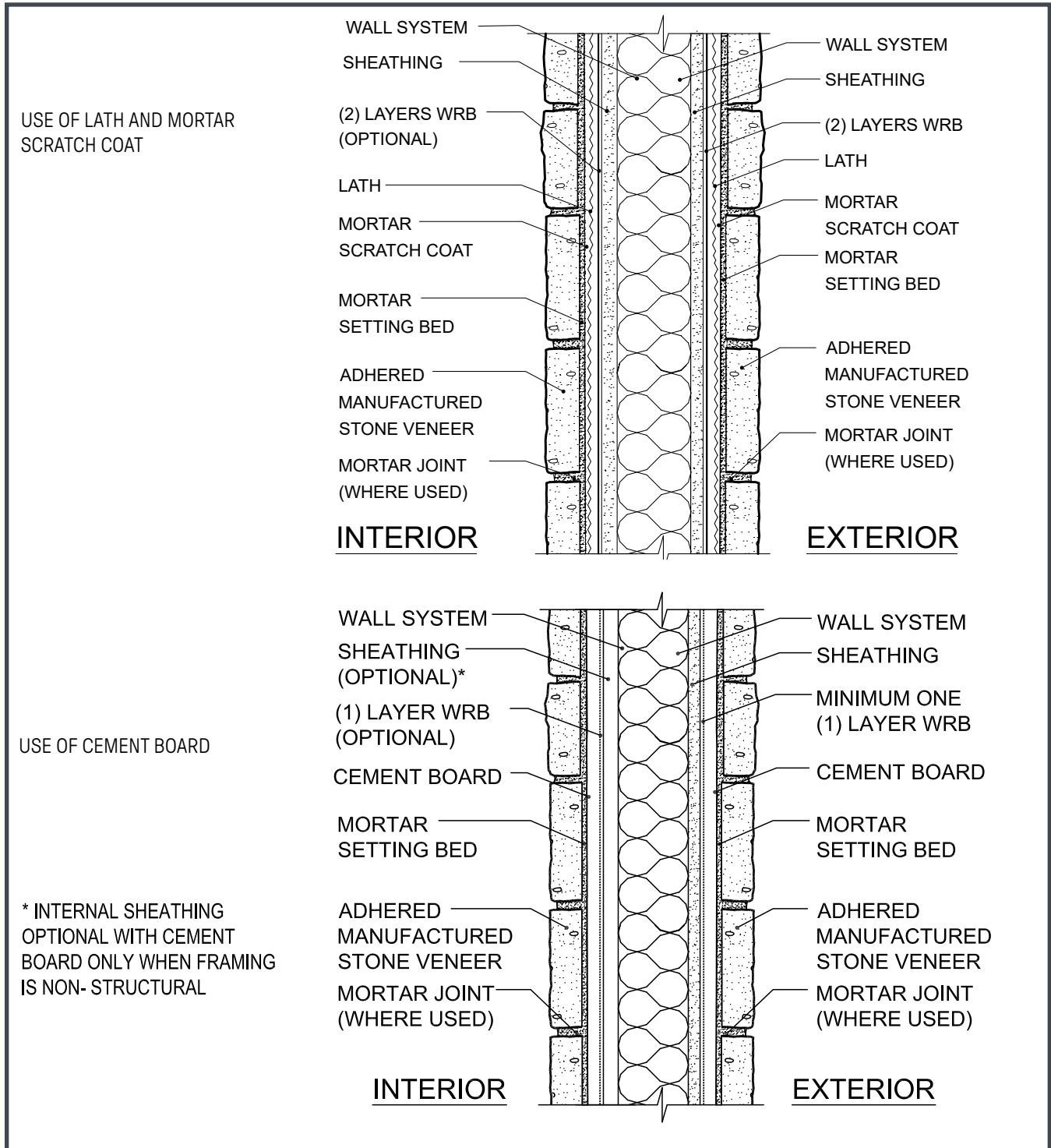


Figure 4b. Typical Wall Frame Section with Continuous Rigid Insulation

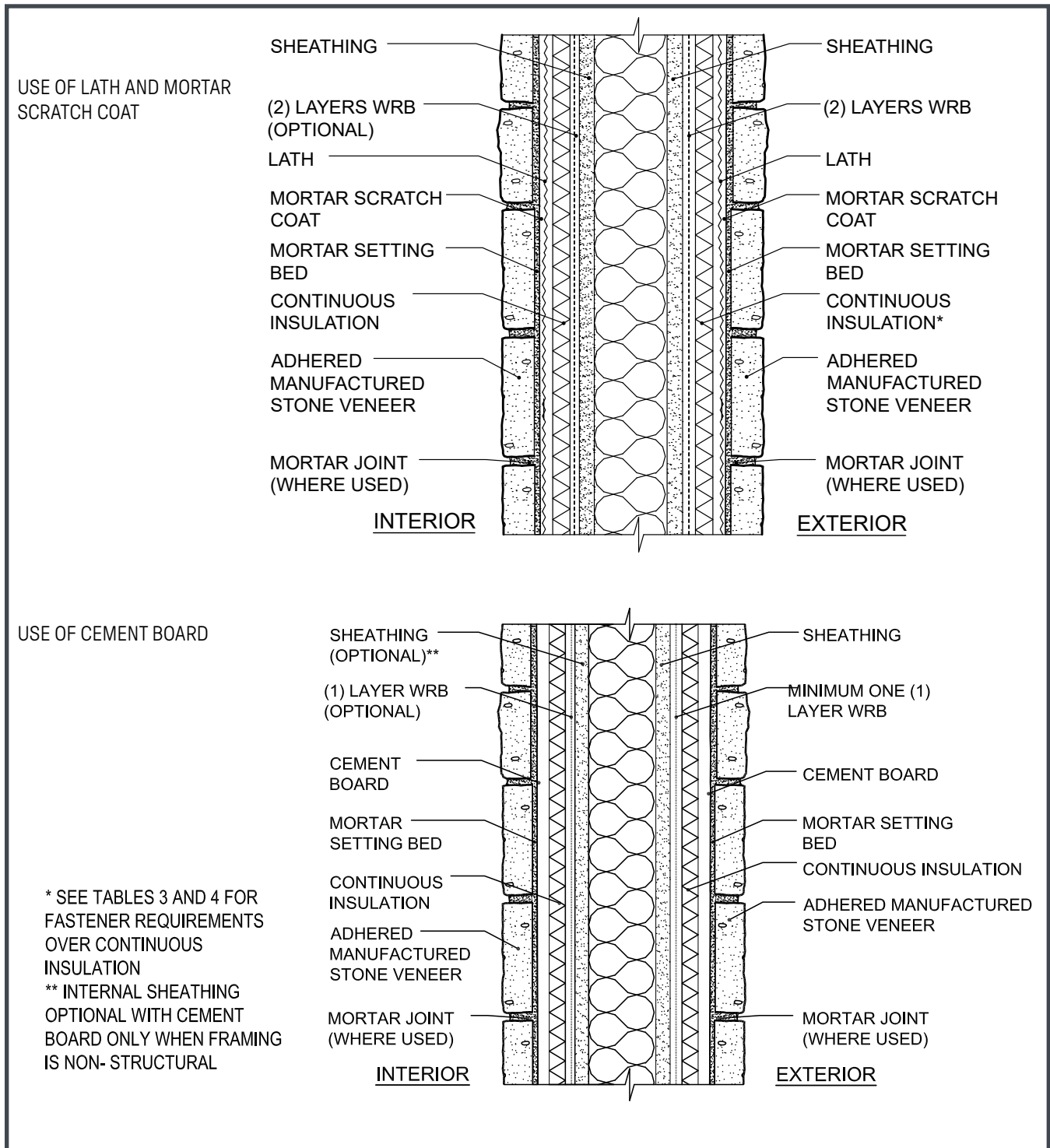


Figure 5a. Foundation Wall Base

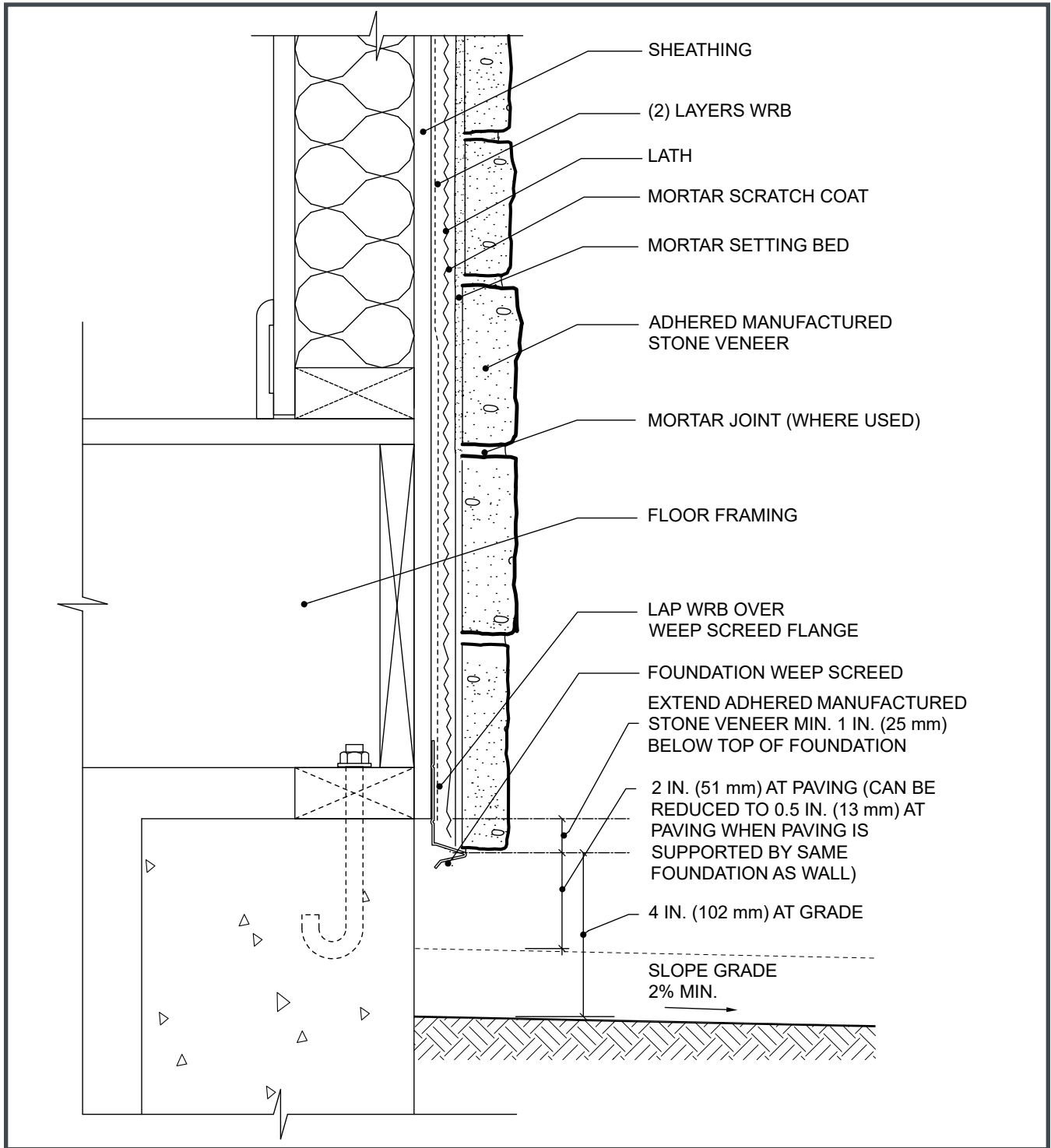
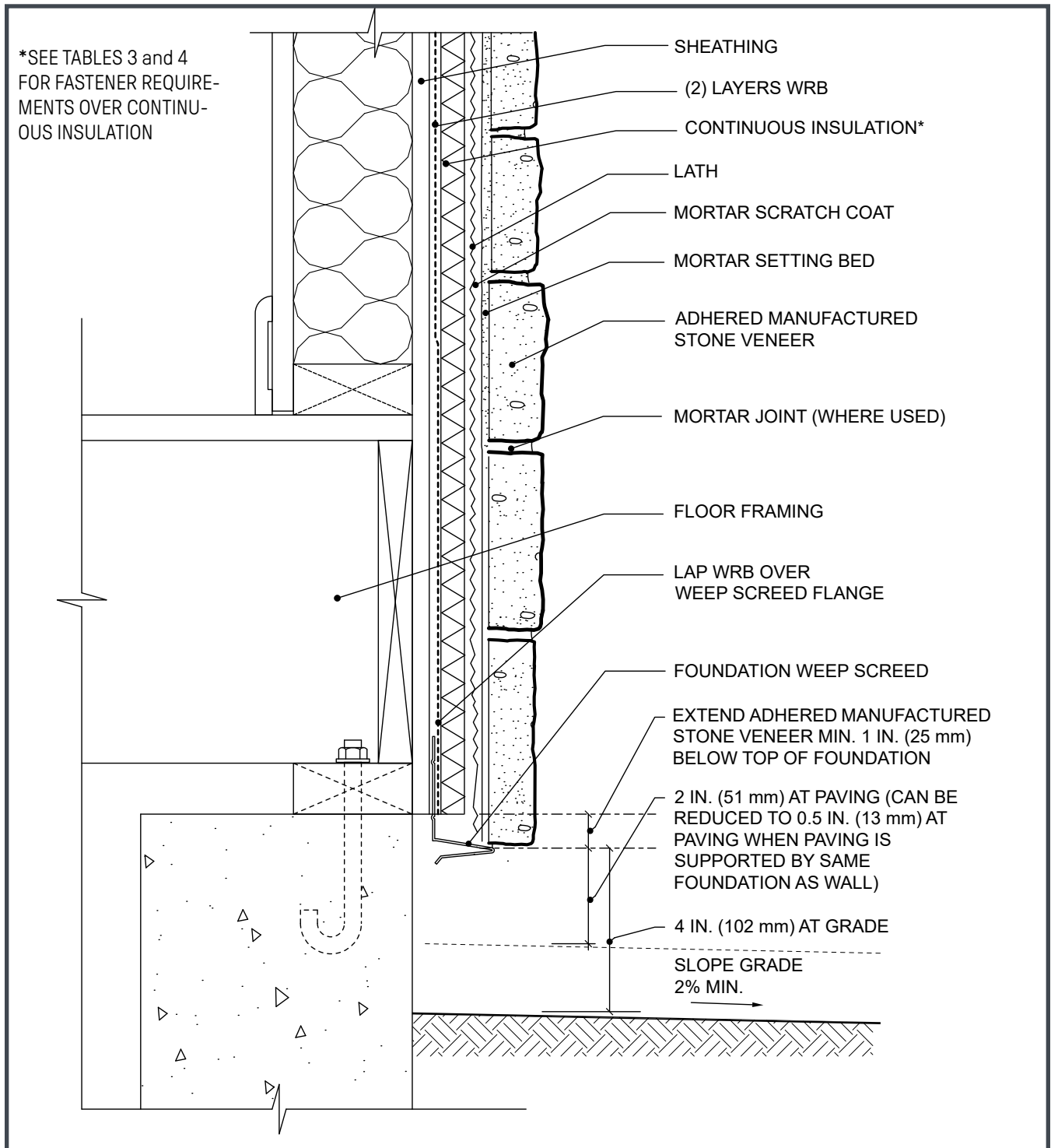


Figure 5b. Foundation Wall Base Over Continuous Rigid Insulation



LONE STAR STONE
"The Natural Choice"

NITTERHOUSE
STONE

NORSE
BUILDING PRODUCTS INC.

Prestige
STONE PRODUCTS LLC

ProVia
THE PROFESSIONAL WAY

SUNSET
STONE

TEXAS STONE
DESIGNS INC.
INTEGRITY • QUALITY • SERVICE

VENEERSTONE
Producers of Quality Manufactured Stone & Thin Brick

Figure 6. Foundation Wall Base – AMSV Overlapping Foundation

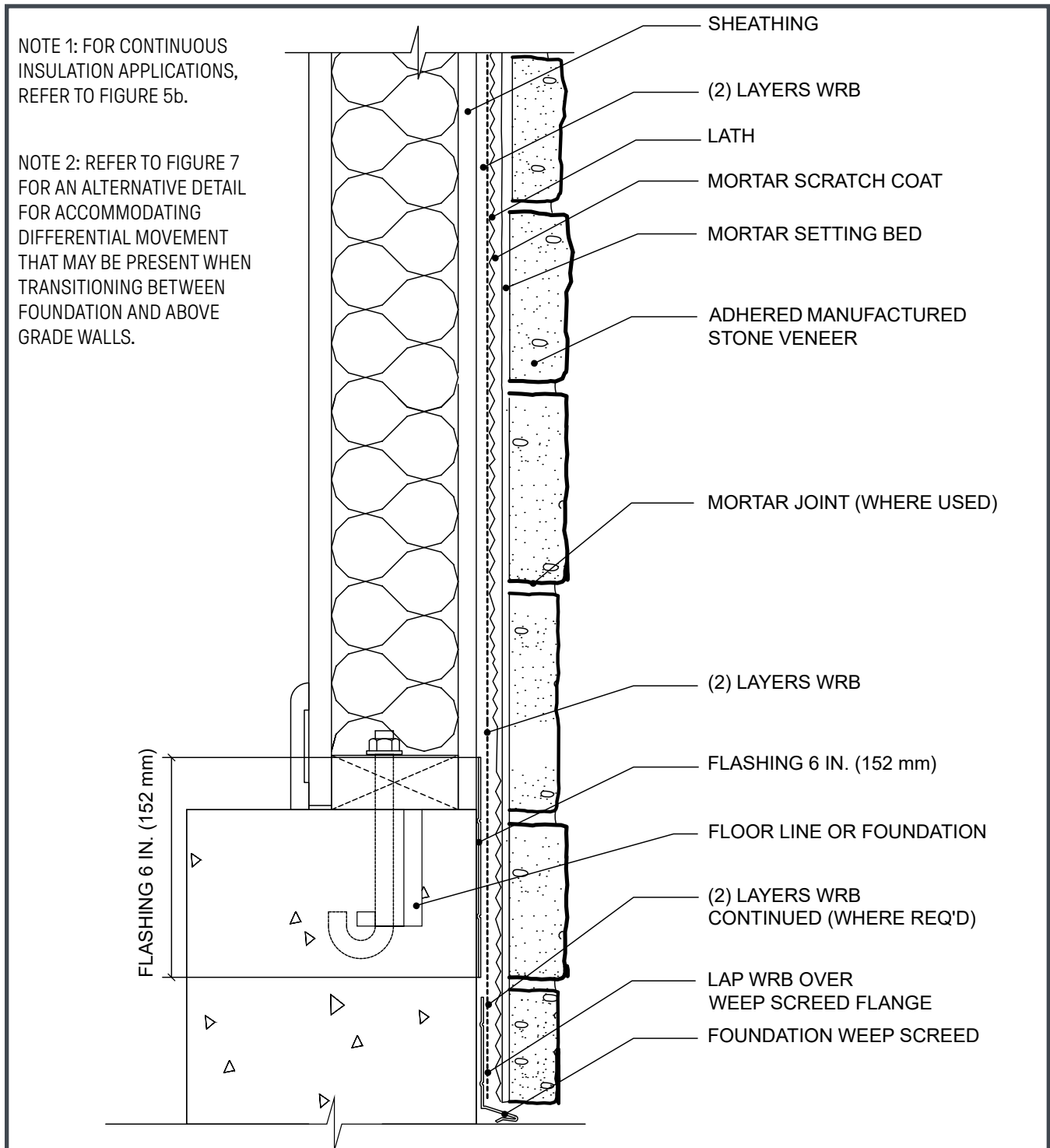
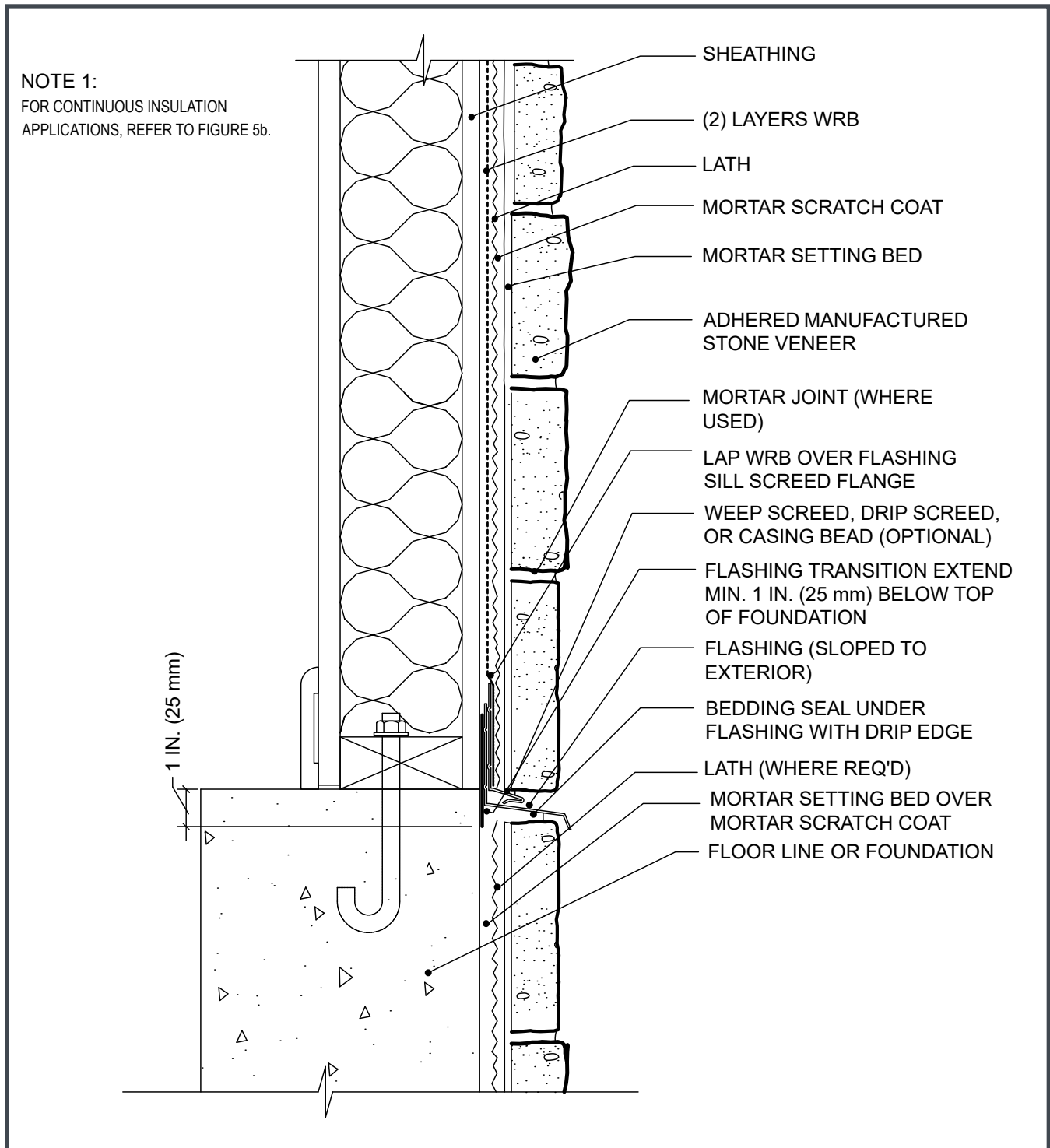


Figure 7. Foundation Wall - Transition to AMSV Continuing Down Foundation



LONE STAR STONE
"The Natural Choice"

**NITTERHOUSE
STONE**
DESIGNS INC.

NORSE
BUILDING PRODUCTS INC.

Prestige
STONE PRODUCTS LLC

ProVia
THE PROFESSIONAL WAY

**SUNSET
STONE**

TEXAS STONE
DESIGNS INC.
INTEGRITY • QUALITY • SERVICE

VENEERSTONE
Producers of Quality Manufactured Stone & Thin Brick

Figure 8a. Cladding Transition

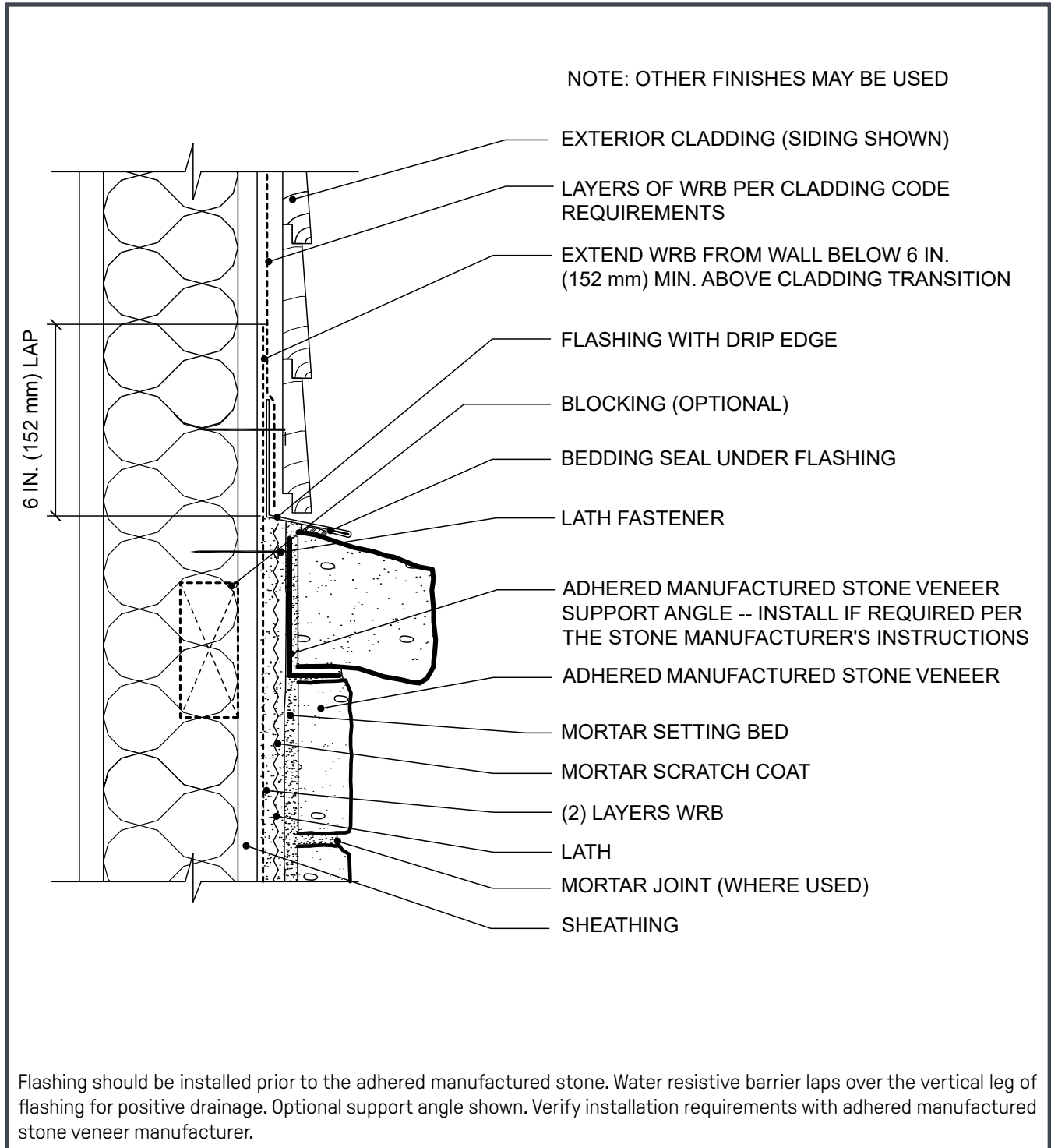
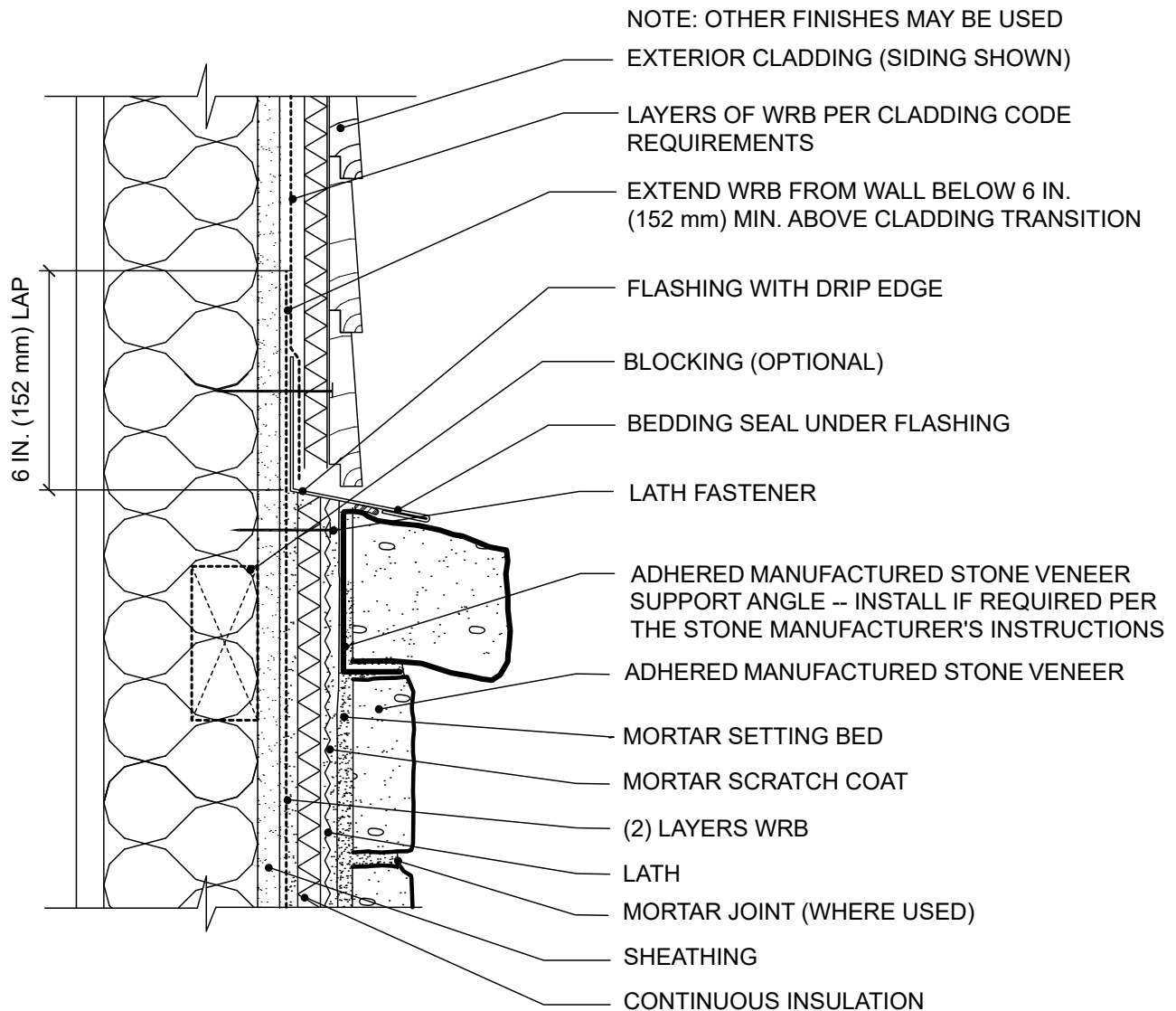


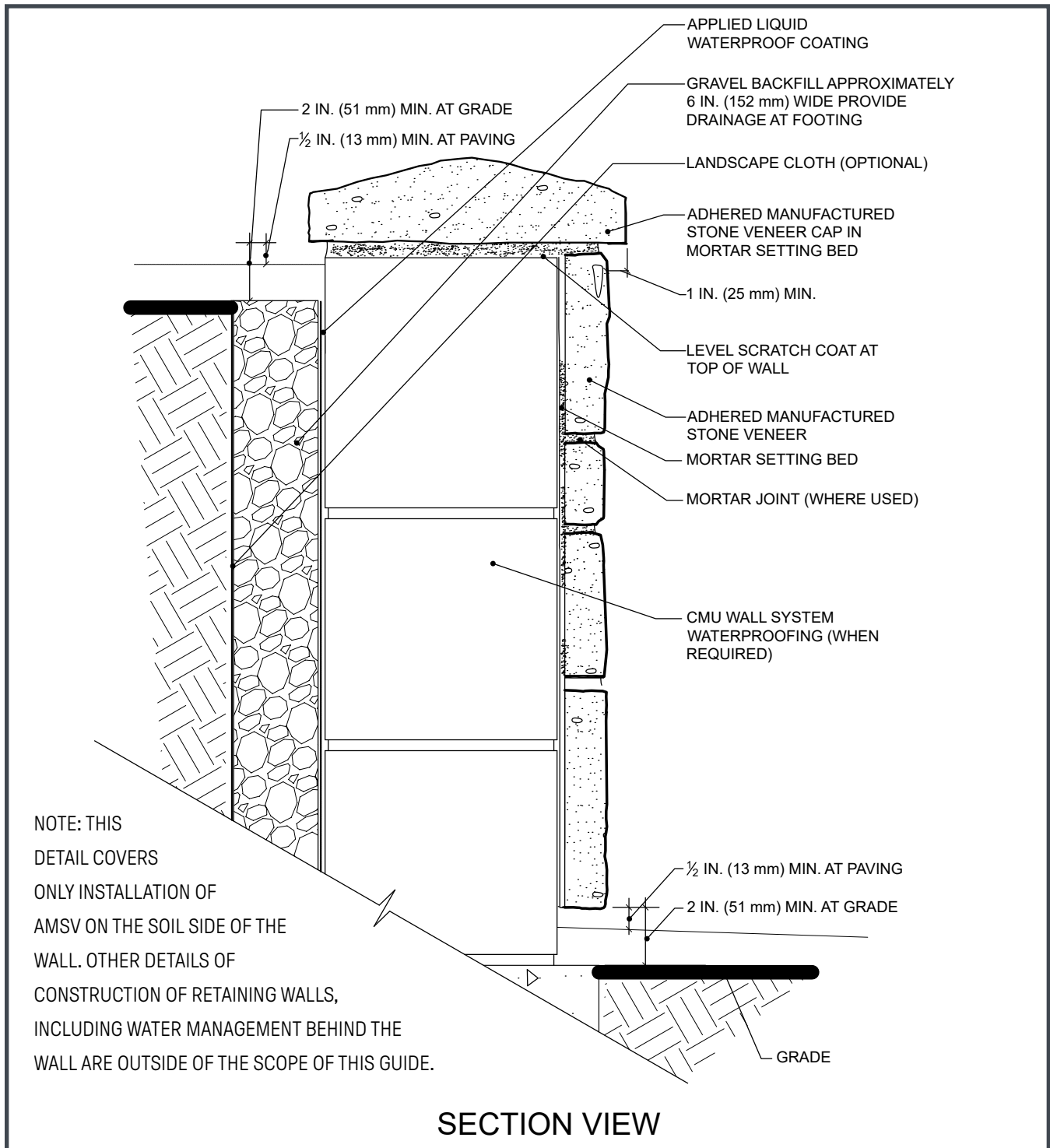
Figure 8b. Cladding Transition Over Continuous Rigid Insulation



Flashing should be installed prior to the adhered manufactured stone. Water resistive barrier laps over the vertical leg of flashing for positive drainage. Optional support angle shown. Verify installation requirements with adhered manufactured stone veneer manufacturer.



Figure 39. Retaining Wall (CMU)



NCMA MSV

MANUFACTURED STONE VENEER

For additional information or questions on the
items contained here, please contact NCMA at:
(703) 713-1900

Copyright © 2020 NCMA All Rights Reserved.
NCMA and its respective logos are trademarks of
NCMA in the United States and other countries.

Invite the Outdoors In

With Striking Stone Veneer

For interior inspiration and stone veneer options, visit boralamerica.com/stone.

BORAL
STONE DIVISION

CULTURED STONE.

ELDORADO  STONE



DUTCH QUALITY STONE
CRAFTSMANSHIP BORN OF TRADITION

VERSETTA
STONE

STONECRAFT
DESIGN


KINDRED
OUTDOORS • SURROUNDS



Add Definition & Differentiation to Any Interior Space.

Bring depth to spaces small and large with unique textures.

Seamlessly add interest to your existing color scheme.

Hundreds of options & endless ways to customize.

What Makes Architectural Stone Veneer Ideal for Interiors?

The varied shapes, sizes, colors and textures of architectural stone veneer provide design versatility that's perfect for creating an inviting space. Our products make it easy to add depth by blending into your current aesthetic, or create a new, show-stopping focal point.

Stone Materials Echo Outdoor Surroundings

The application of nature-inspired solutions creates a more relaxing, human-centric space in our homes and businesses. Architectural stone veneer combines natural world elements with modern interior design practices for a distinctive look that embraces a connection to the outdoors.

Architectural Stone Veneer Enriches Every Interior

No other material offers the depth, complexity of color and pattern, and tactile distinction of architectural stone veneer. With so many options, it's easy to achieve a sleek and modern look, a quaint country feel, a formal atmosphere, or a casually elegant ambiance.

The Quality and Value of Architectural Stone Veneer is Unmatched

With a solid foundation of industry knowledge and manufacturing expertise, the Boral North America Stone Division brings industry-leading stone brands together with products that embody quality, reliability, and consistency. With unmatched performance, our architectural stone veneers provide maintenance-free design solutions that require no painting, coating, or sealing, all backed by a 50-year limited warranty.



For interior inspiration and stone veneer options,
visit boralamerica.com/stone.



It's All About Curb Appeal

According to Remodeling Magazine, 9 out of the top 10 highest return projects are “curb appeal” projects, like those involving manufactured stone veneer. In fact, year after year, manufactured stone veneer continues to provide one of the highest return values of any material.

**CURB APPEAL CAN INCREASE
YOUR HOME VALUE UP TO**

20%*

** According to real estate agents polled in a 2014 Zillow survey.*

Good First Impressions & Faster Sales

An exterior facade made with manufactured stone veneer makes a great first impression on real estate agents and homebuyers. Since it's considered a higher quality finish than many other materials, it can actually lead to higher appraisals and lasting value for homeowners.



Add Character Virtually Anywhere

Front entryways

Garage fronts

Full wall facade accents

Pillars

Chimneys

Exterior wainscoting

Retainer walls

Gardens

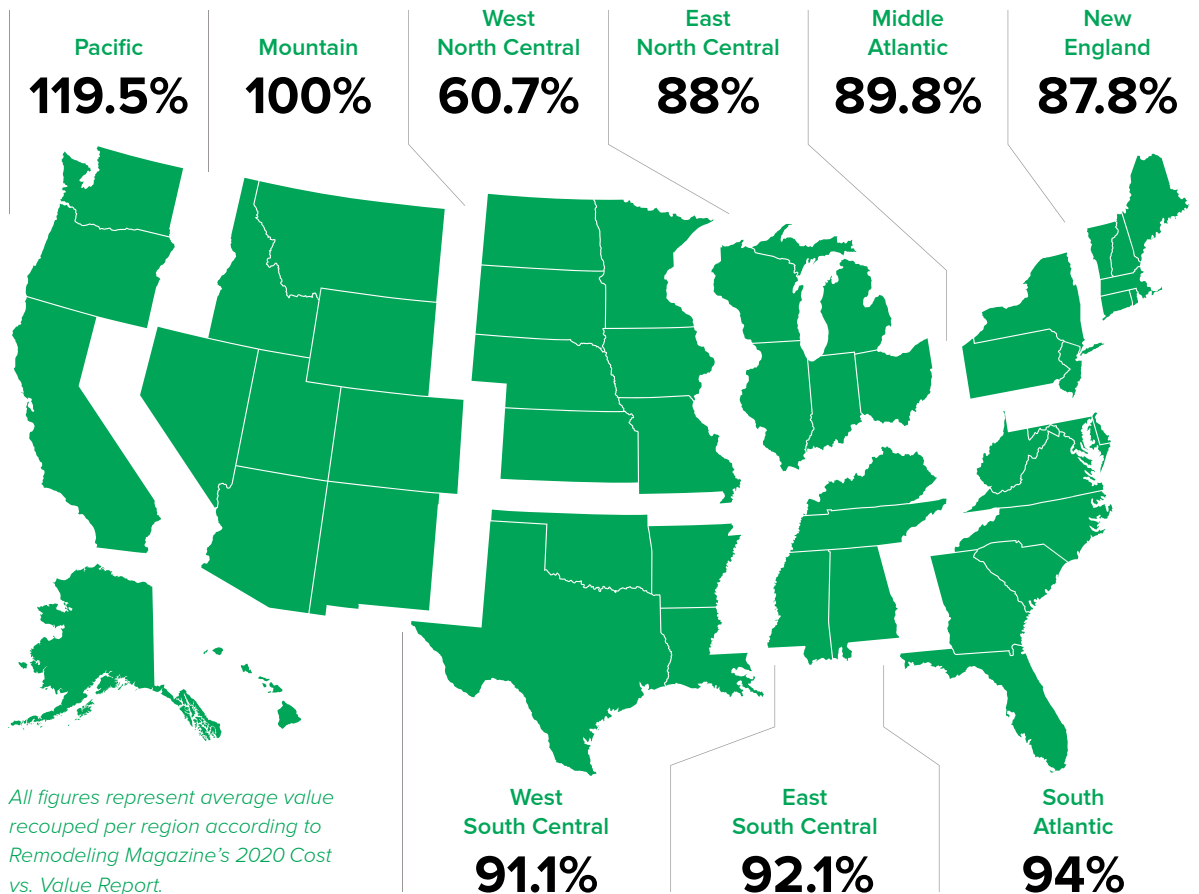
Pool & patio areas

For interior inspiration and stone veneer options,
visit boralamerica.com/stone.



95.6%

The average amount U.S. homeowners recoup from their manufactured stone veneer investment



Manufactured stone veneer doesn't just enliven your outdoor and indoor living spaces. According to multiple sources, it's also one of the most sound investments you can make to increase home resale value. It's cost effective, easy to install, and adds tremendous curb appeal to any number of exterior features.

CULTURED STONE.

ELDORADO STONE

DUTCH QUALITY STONE
CRAFTSMANSHIP BORN BY TRADITION

VERSETTA STONE

STONECRAFT

KINDRED
OUTDOORS + SURROUNDS

Browse our entire portfolio of manufactured stone veneer
at boralamerica.com/stone.





TECHNICAL RESOURCES

ONLINE DIRECTORY

Eldorado Stone is designed to meet or exceed building code requirements. Independent testing confirms compliance with ICC-ES Acceptance Criteria 51 and ASTM C1670, standard specification for Adhered Stone Veneer. Local building codes may vary by area. Always check with your local building authorities before installing stone.

Please visit www.eldoradostone.com/resources to view all digital materials available for download.

CATEGORIES

PRODUCT LITERATURE

- Stone & Brick Brochure
- Craftshield Brochure
- Architectural Solutions
- Interior Design Resources

EDUCATION

- CEU-AIA Courses
- Stone 101 Guide
- Technically Speaking Webinar Series
- FAQs

SPECIFICATIONS & DETAILS

- Technical Evaluation Report
- Safety Data Sheet
- Technical Data Sheet
- Material Safety Data Sheet
- ICC-ES Evaluation Report
- CSI 3-Part Spec
- Wind Load Test
- 910f
- Warranty
- Craftshield Technical Data Sheet
- Craftshield Material Safety Data Sheet
- Craftshield 3-Part Spec

BIM + CAD

- BIM-CAD Files: Stone & Brick
- NCMA CAD Drawings

INSTALLATION & MAINTENANCE

- NCMA Installation Guide
- Supplemental Installation Guide
- Large Format Installation Guide
- Grout Techniques
- Stone Care & Maintenance



A **BORAL**® Brand



EARN CEU CREDITS WITHOUT LEAVING YOUR HOME!

Virtual Presentations

All of our AIA courses are available as virtual presentations led by one of our sales representatives.

On-Demand Courses

Select courses can be taken online independently, without a presenter.

Schedule a Presentation

Contact StoneCEU@Boral.com to schedule a virtual presentation.



CEU Virtual Course Offerings

BORAL STONE DIVISION

The following are CEU courses offered under Boral Stone Division:

Designing Commercial Projects with Manufactured Masonry – AIA

Design guidelines for sustainable manufactured stone veneer buildings, including product innovations and industry related education.

1 LU | HSW

Precision & Performance with Manufactured Stone Veneer – AIA / IDCEC

Explore manufactured stone veneer as an inspirational design element, born from innovative technology and creative solutions.

1 LU | IDCEC

COURSE ALSO AVAILABLE ON-DEMAND
Register Here: culturedstone.com/on-demand



Architectural Stone Veneer: Transforming Spaces Through Color & Texture – AIA

Understand the benefits of specifying architectural stone veneer in your design projects and learn about proper installation techniques.

1 LU | HSW

Architectural Stone Veneer: Designing With Nature in Mind – AIA / IDCEC

Discover how incorporating architectural stone veneer into your project can help promote well-being, sustainability, and design versatility.

1 LU | IDCEC

COURSE AVAILABLE ON-DEMAND
Register Here: eldoradostone.com/on-demand



Understanding Mortarless Stone Veneer and Other Stone Veneer Products – AIA

An examination of the new Mortarless Stone Veneer category of cladding products as it relates to other types of stone veneer, specifically around the areas of installation and applications.

1 LU | HSW

FREQUENTLY ASKED QUESTIONS

Why is Eldorado Stone® considered *The Most Believable Architectural Stone Veneer in the World*™?

Believability. It's the most important ingredient of Eldorado Stone and the most compelling reason why so many architects, builders and homeowners choose Eldorado Stone. Eldorado's distinct process handcrafts molds and creates the natural color palettes that capture all the nuances of real stone. The warmth and richness of Eldorado Stone creates unique spaces of permanence, romance and beauty; inside and out. *The Most Believable Architectural Stone Veneer in the World*. Only from Eldorado Stone.

What is the difference between manufactured stone veneer and natural stone?

Manufactured stone veneer is cast from molds of real stone which makes it lighter than natural stone. Natural stone may require wall ties and footings, which, in turn, can increase installation cost and difficulty. Eldorado's architectural stone veneer is lighter weight, designed to adhere easily to a variety of structurally sound surfaces, and is capable of installations that would normally be very difficult and costly to achieve with natural stone.

What are the benefits of using manufactured stone?

Installed, manufactured stone is approximately 1/3 to 1/2 the cost of natural stone. Its light weight properties eliminate the need for wall ties or footings. Manufactured stone has a 2% (approximately) waste factor versus 10% or more for natural stone.

Where can I install Eldorado Stone?

Eldorado Stone can be applied to any structurally sound surface with the proper preparation. It fits nearly any building plan — large or small, interior or exterior, new residential or commercial projects — or on any remodel. For inspirational installations visit www.eldoradostone.com/imagine.



A BORAL® Brand

FREQUENTLY ASKED QUESTIONS

Can I install Eldorado Stone myself?

In general, installation of Eldorado Stone can be installed by almost anyone. However, installation does require a fundamental understanding of stone masonry. Please review the *Installation Procedures* and *How to Install* at www.eldoradostone.com or contact Customer Service at 800.925.1491.

How does Eldorado Stone withstand freeze/thaw cycles?

Eldorado Stone products are tested for freeze/thaw durability. As with any installation, making sure to incorporate good building practices that include proper flashing and water diversion techniques will help ensure a successful installation.

How much does Eldorado Stone weigh?

Approximately 10-12 lbs. per square foot. Eldorado Stone qualifies as an adhered veneer because it weighs less than 15 lbs. per square foot.

Will Eldorado Stone fade?

The base color is blended throughout and permanent mineral oxide pigments are applied and absorbed when the veneer is cast. Color becomes an integral part of the veneer and, similar to natural stone, there are minimal noticeable color changes after years of weathering.

How important is a good stone installation?

As with any building material, the beauty of that product is greatly enhanced by how well it is installed. With Eldorado Stone, careful consideration regarding the type of profile and color selected, the actual installed stone “pattern”, and the type of grout technique used, are all very important factors to regard. It is always best to create a mock up board with the desired aesthetic appeal prior to installation on your project. For more information download the *Installation Procedures* and *Finishing Details* PDFs from www.eldoradostone.com.



What type of coverage can be expected?

Approximately 100 square feet per day. This varies depending upon the stone type used and the installers ability. Stacked Stone, for instance, sold in 4" modular component panels, is easy to install and will provide coverage of up to 200 square feet in a day. Conversely, Shadow Rock, with its irregular shapes and varying stone sizes, can provide coverage of 70- 80 square feet a day.

Where can I buy Eldorado Stone?

Eldorado Stone is sold by more than 1,000 authorized distributors throughout the U.S. and Canada. Please visit www.eldoradostone.com and select "Contact" to find a distributor near you.

Where can I find knowledgeable masons?

Your local Eldorado Stone distributor can recommend local masons that are familiar with Eldorado Stone products and installation.

Does Eldorado Stone meet building code requirements?

Eldorado Stone complies with all applicable Building Code requirements. A copy of the Eldorado Stone *Technical Data Sheet* is available online at www.eldoradostone.com.

Is Eldorado Stone combustible?

No. Eldorado Stone's listing by Underwriter's Laboratories shows zero fuel contributed and zero smoke developed. It can be installed as a façade to fireplaces and behind stoves. It is recommended the product is at least 18" away from any direct flame.

Can I install Eldorado Stone on overhead horizontal surfaces?

Please verify your installation with your building official and consult with an engineer for specific design issues on your project. There are grout and mortar manufacturers that will support their product's use in these installations. Eldorado Stone's *50 Year Limited Warranty* will still cover our veneer products for manufacturing defects.

FREQUENTLY ASKED QUESTIONS

Can I install Eldorado Stone near water?

It is not recommended for use below the water line in a pool, a fountain or below grade. A high quality penetrating and breathable sealer that is either silane or siloxane-based is recommended in areas where the stone may be subject to frequent water run off.

NOTE: A sealer may affect the stone color and may create a gloss or matte finish. Always test a small area beforehand.

How thick are the stones?

0.625" to 3.625" depending on the texture.

What's the thickness from the substrate to surface of the stone?

There will be (approximately) an additional 0.5"-1" of mortar thickness behind the stone. For example, if your stone profile is 2" thick, you can expect the total thickness from the substrate to the face of the stone to be (approximately) 2.5" - 3" thick.

What is the R-value of Eldorado Stone?

An average of 0.41 per inch of thickness.

What is the installed weight?

The installed weight will vary depending upon the profile chosen and the mortar, grout technique, lath and lath accessories used. Eldorado Stone can weigh up to 15 lb./sq.ft. If a specific weight is needed for a project we recommend having an engineer evaluate the system.

How many square feet will a bag of mortar cover?

A 94 lb. bag covers 8'-12' for the standard, full and overgrout applications and 10'-14' for the drystack applications.

What happens if Eldorado Stone is damaged?

Small chips and cracks can be repaired using our *Color Touch-Up Kit* which includes easy-to-follow instructions. These kits are available from Customer Service at 800.925.1491. *Touch-Up Kits* are not made for coloring aggregate exposed by cutting stones. The best installers will bury cuts into transitions and/or hide them with mortar when grouting.



How do I clean the Eldorado Stone ?

To clean dirt or other particles first try a simple soft bristle brush. If necessary use a solution of mild detergent with water and scrub the surface with a soft bristle brush. Rinse with clean water to remove any cleaning solution that might remain on the surface. If the stone has a white stain deposit (efflorescence) please contact Customer Service at 800.925.1491 for recommendations. Never use wire brushes, acid cleaners, power washers, bleach, paint remover or any other type of concrete cleaner.

How do I clean efflorescence?

When efflorescence occurs, as it does with many masonry products, it is the usually the result of moisture migration through the masonry substrate. Once the moisture is on the masonry surface, it evaporates, depositing dissolved salts in the form of efflorescence. Efflorescence naturally disappears over time as long as the moisture source is controlled or eliminated. If the stain will not wash off, do not apply chemicals or cleaners to the stone. Call Eldorado customer service to discuss optional solutions.

Can I seal Eldorado Stone?

It is not required to seal Eldorado Stone. A sealer will provide added protection and will usually be easier to clean if the surface becomes dirty. If you choose to use a sealer for added protection use only a silane or siloxane-based penetrating, breathable masonry sealer.

NOTE: A sealer may affect the stone color and may create a gloss or matte finish. Always test a small area beforehand.

What about protection against graffiti?

In many areas, Eldorado Stone is considered a protection against graffiti. The color blends and uneven textures are not the best canvas for graffiti “artists.” However, if you should choose to use an anti-graffiti coating please speak directly to the manufacturer of the anti-graffiti coating product and ask your contractor to submit a test prior to installation. There are urethane and wax-based sealers that can damage the surface or cause it to “yellow.” Other sealers may encourage additional efflorescence on the stone’s surface. No type of coating should be applied until the stone has been on the wall for at least 14 to 28 days.

FREQUENTLY ASKED QUESTIONS

Does Eldorado Stone require movement joints?

Expansion joints normally pass completely through a wall. Control joints normally are on the surface of the wall and relieve strain on the skin of the wall. Terminate the veneer installation where control and expansion joints occur in the substrate. Do not span these joints with veneer because this will lead to cracking. Expansion joints in a building must be specified by the architect or engineer. The architect or engineer should consider the ASTM C 1063 control joint requirements when determining the location of control joints on any structure. Normally the weakest point on a wall is immediately above and below penetrations.

How do I install Eldorado Stone when there is an expansion joint?

Treat each section as a “separate” installation. Do not span movement joints with the veneer.

What is Eldorado Stone’s recommendation regarding flashing around windows and doors?

To maintain the weather-resistance of the exterior wall on which the stone products are installed, a rigid, corrosion-resistant flashing — and a means of drainage — should be installed at all penetrations and terminations of the veneer cladding. Flashing type and locations shall be in accordance with the requirements of the applicable code.

Please reference the *Finishing Details* PDF on our website. Also refer to ASTM E2112 and any information from your Window and Door manufacturer.

What kind of Weather Resistive Barrier (WRB) can I use?

It is recommended to use two separate layers of WRB in all applications where WRB is specified.* The WRB must meet the requirements of ICC-ES AC 308 *Acceptance Criteria for Water-Resistive Barriers*. When using Grade D paper, a 60 minute rating is recommended. Felt paper must be clearly marked that it meets the requirements of ASTM D 226 for #15 or #30 asphalt saturated felt.** It is acceptable to use one layer of housewrap covered by a second layer of WRB meeting the requirements above. The WRB should be free of tears or holes.

* *It is acceptable to use one layer of WRB on interior applications.*

** *Felt meeting ASTM D 4869 or non-ASTM #15 felt is not recommended for use behind veneer.*



Should I use a rainscreen drainage plane system?

Eldorado Stone veneer does not require the use of a rainscreen drainage plane system for all applications. However, some building codes now require the use of rainscreen drainage plane systems behind cladding materials such as manufactured veneer. If you are installing veneer in these areas, or wish to provide additional protection against entrapped moisture, download the *Installation Procedures* PDF from www.eldoradostone.com for more detailed information.

What is the fire rating of Eldorado Stone?

Eldorado Stone has been tested for fire hazard and shows zero flame spread and zero smoke developed. Since Eldorado Stone is non-combustible there is no fire rating.

Can we install Eldorado Stone around a fireplace?

Eldorado Stone can be installed around a fireplace. The veneer has to be a minimum of 18" from any open flame. Download the *Installation Procedures* PDF from www.eldoradostone.com for more detailed information.

What measures should be taken for hot/cold weather installations?

For cold weather installations ambient temperature should be 40°F or higher at the time Eldorado Stone veneer is applied. If the temperature is below 40°F, mortar should be heated between 40°F – 120°F (not to exceed 140°F). Any mortar that freezes should be discarded. Wall surfaces may need to be covered and heated after installation of veneer to avoid freezing the mortar. See section 2104.3 of the International Building Code (IBC) for additional cold weather requirements.

Applications in hot weather conditions should follow the requirements in section 2104.4 of the IBC. Mortar should be kept under 120°F and be used within 2 hours of initial mixing.

Does Eldorado Stone need a ledge detail at the bottom for structural support or can it hang freely?

No footings or support ledges are needed. The product is an adhered veneer and is supported on the wall by the bond of the mortar to the stone and scratch coat.

FREQUENTLY ASKED QUESTIONS

What measures should be taken for applications over 30 feet?

Eldorado Stone can be installed on any structurally sound surface. For all applications up to 30' in height we recommend following our *Installation Procedures*. Unless special construction techniques accommodates differential movement — which is approved by a code official — there is a 30' height limit for installations over wood-frame construction. For installations over non wood-framed sheathing (e.g., steel studs, concrete walls, etc.) there's no specific height limitation. However, Eldorado Stone recommends that you consult with a building code official regarding any project exceeding 30' in height.

What kind of wind-load testing has been applied to Eldorado Stone veneer?

Eldorado Stone has tested grouted and dry-stacked applications in accordance with: ASTM E330, *Standard Test Method for Structural Performance of Exterior Windows, Doors, Skylights and Curtain Walls by Uniform Static Air Pressure Difference (Modified)*. Wall samples were subjected to positive and negative structural load tests at 57.6 psf (150 mph wind speed) and 60 psf (153 mph wind speed) pressure differentials. After completion of each load a visual inspection revealed no visible damage or cracking.

Where can I learn more about Eldorado Stone?

Contact your Architectural Representative, visit www.eldoradostone.com or talk to your local distributor to find out more about the many inspirational and technical attributes that make Eldorado Stone *The Most Believable Architectural Stone Veneer in the World™*.



A BORAL® Brand

ELDORADO STONE®

50 YEAR LIMITED WARRANTY

1. Subject to the following terms, Eldorado Stone, LLC (ES) warrants to the original purchaser and subsequent owners that for 50 years from the date of sale its Eldorado Stone manufactured stone or brick veneer (collectively referred to in the remainder of this document as the “product” or the “products”) will not blister, peel, flake, delaminate or crack excessively, as a result of manufacturing defects when used on structures conforming to local building codes and installed in accordance with the National Concrete Masonry Association – Manufactured Stone Veneer Manufacturer’s Association written instructions issued before and closest in time to the beginning of the project. ES will at its option, either: (1) pay the reasonable replacement cost of the defectively manufactured products; (2) provide a replacement of the defective product or pay the reasonable cost for replacement product of a similar design; or (3) pay the reasonable cost for repair of the defective product. This limited warranty applies only to products constituting stone or brick veneer manufactured by Eldorado Stone; it does not apply to any other products or materials, including exterior walls, exterior wall envelopes, backing to which ES veneer is secured, or water-resistive barriers. The definition of “veneer” contained in the International Building Code is determinative for purposes of establishing what products constitute ES manufactured stone or brick veneer and are covered by this warranty.
2. This Limited Warranty is not limited to the original purchaser but covers the stone regardless of whether ownership of the building changes. This warranty runs with the transfer of the property to subsequent owners of the property into which the warranted products have been incorporated, but the warranty period as to such subsequent owners is limited to 15 years from the original date of the installation of the warranted product.
3. No warranty whatsoever is made with respect to the manufacture or performance of materials or components of construction not sold or manufactured by Eldorado, including but not limited to mortar, lath, weather resistant barriers, doors, windows, sealants, flashings, roofing, copings, sheathing and framing. Further, ES makes no warranties whatsoever with respect to aesthetics, design and engineering of the structure into which ES products are incorporated, or workmanship involved in the application of any ES products warranted hereunder. The ES product is not waterproof. The ES product should not be used on exterior or interior steps or risers. The ES product must be incorporated into a wall assembly designed by a building professional that contains adequate mechanisms for water management. ES has no responsibility for damage caused by moisture intrusion through the building envelope or around any of the building envelope components or by vapor transmission from the inside of the building to a moisture sensitive part of the wall assembly.

This warranty is effective for sales after April 1, 2018, and supersedes all previously published versions of this warranty. It shall remain effective until Eldorado Stone publishes a subsequent superseding version, at which time it shall have no further effect.






ELDORADO STONE®

50 YEAR LIMITED WARRANTY

4. This warranty covers only manufacturing defects in ES manufactured stone or brick veneer. ES' manufacturing process has been designed to imitate the random beauty and nature of real stone. As such, stone surfaces may contain small air holes or surface anomalies. These differences add to the overall character of the stone and are not considered manufacturing defects. Changes in the appearance of ES products caused by normal weathering or efflorescence, which is a natural phenomenon of all concrete products, are also not considered manufacturing defects. Normal weathering is defined as exposure to sunlight and extremes of weather and atmosphere, which will cause any colored surface to fade, chalk, or accumulate dirt or stains.
5. Without limiting anything else in this document, Eldorado disclaims and assumes no liability for:
 - a. improper use, application or installation of Eldorado's products,
 - b. use of ES products as part of improperly designed or constructed assemblies or buildings or with defective adjacent materials or assemblies;
 - c. failure to follow applicable specifications, instructions and construction details;
 - d. use of any sealing or coating on the stone other than one that is silane or siloxane based in strict compliance with sealant manufacturer's instructions;
 - e. other design or construction defects, deficiencies and failures on a building where ES' product is used;
 - f. undertaking on-site inspections or any on-site activities or making oral statements at the site;
 - g. any damage or injury whatsoever caused in whole or in part by acts of God, natural phenomenon or physical abuse such as but not limited to falling objects, projectiles, fire, earthquake, floods, windstorm, hail, tornadoes, lightning, hurricanes, other abnormal weather conditions, pests, chemical fumes, foreign substances in the air, misuse, vandalism, civil disobedience, war, damage caused by remodeling or renovation;
 - h. damage resulting from moisture intrusion, mold, settlement of building or other building or wall movement;
 - i. discoloration or deterioration due to airborne contaminants; or contact with any chemicals or paint; staining or oxidations;
 - j. any accumulation of water or moisture in wall assemblies;
 - k. negligence or accidents by any party or parties in maintaining the ES materials, including but not limited to use of pressure washer or harsh or acid chemicals of any nature, including vinegar, to clean;
 - l. replacement of stone if ES' product is mixed with other chemicals or materials not approved by ES in writing;
 - m. any cause beyond ES' control; and
 - n. any workmanship, aesthetics or other damage or injury not solely and directly caused by a manufacturing defect in ES's products as covered under this warranty.

- 
6. THIS LIMITED EXPRESS WARRANTY IS EXCLUSIVE, THE ONLY WARRANTY MADE BY ES, AND IS IN LIEU OF ALL OTHER WARRANTIES OR REMEDIES OF ANY NATURE WHATSOEVER TO THE ORIGINAL OR SUBSEQUENT PURCHASERS OR USERS UNDER ANY THEORY OF LIABILITY, WHETHER IN CONTRACT, TORT, STATUTORY LAW OR OTHERWISE, EXCEPT FOR ACTUAL ECONOMIC DAMAGES FOR PERSONAL PHYSICAL BODILY INJURY. ALL OTHER WARRANTIES, REPRESENTATIONS OR REMEDIES, WHETHER ORAL, WRITTEN, EXPRESS OR IMPLIED OR IMPOSED BY LAW ARE DISCLAIMED BY ES AND ARE WAIVED BY THE PURCHASER, PARTICULARLY THE IMPLIED WARRANTIES OF MERCHANTABILITY OR FITNESS FOR A PARTICULAR PURPOSE OR ARISING FROM A COURSE OF DEALING, USAGE OR TRADE PRACTICE, OR ANY WARRANTY AGAINST PATENT INFRINGEMENT OR WARRANTY FOR WORK PERFORMED IN A WORKMANLIKE MANNER. ELDORADO SHALL NOT BE LIABLE UNDER ANY CIRCUMSTANCES FOR ANY INCIDENTAL, SPECIAL, INDIRECT OR PUNITIVE DAMAGES TO ANY PARTY WHATSOEVER, INCLUDING BUT NOT LIMITED TO, LOSS OF PROFITS, DAMAGE TO THE BUILDING OR ITS CONTENTS, AND ATTORNEY'S FEES. THIS EXCLUSION OF DAMAGES INCLUDES, BUT IS NOT LIMITED TO PAYMENTS OF ANY NATURE MADE BECAUSE OF ACTUAL OR POTENTIAL LIABILITY TO OTHERS, DAMAGES TO ANY OTHER PART OF THE STRUCTURE TO WHICH THE WARRANTED PRODUCTS ARE INCORPORATED OR DAMAGE TO ANY OTHER PROPERTY.
 7. ES shall have no further obligation or liability of any kind, other than as stated in this document, and it is further agreed and understood that the price paid for ES stones is consideration for the limitation of ES liability hereunder.
 8. Warranty coverage is limited to replacement or repair of defective materials as stated above only and does not cover labor to remove or install materials and does not cover the cost of shipping replacement product. The remedies contained herein shall be sole and exclusive.
 9. ES's obligations under this warranty shall only begin if the owner notifies ES, in writing, within sixty (60) days of actual or constructive notice of the alleged defect. ES shall be allowed a reasonable period of time and authorization to remove samples, so as to perform any testing ES deems necessary to investigate and determine the cause of the defect. The Owner shall make temporary repairs in a timely manner to prevent further damage to the structure, contents of the building, and the ES stones until the cause of the defect is determined and permanent repair recommendations may be made.
 10. ES' obligation to supply replacement stone pursuant to this Warranty shall become null and void if in the sole judgment of ES, any of the following events shall occur: (i) if after installation of the ES stones there are any alterations or repairs made to the building that affect any component of the wall assembly of which ES stones are a part in any way; (ii) if the Owner or any of Owner's tenants fail to use reasonable care in maintaining the ES stones before and after installation; (iii) if the ES stones are installed in a manner that causes them to be repeatedly or continuously wet, such as if installed in the direct path of a water sprinkler, pool, jacuzzi, or similar water device; or (iv) if the ES stones are installed in an area that exposes them to de-icing salts or other harsh chemicals.

ELDORADO STONE®

50 YEAR LIMITED WARRANTY

11. Applicability of the Magnusson-Moss Act is hereby disclaimed.
12. Any provision of this warranty that is prohibited or unenforceable in any jurisdiction shall, as to such jurisdiction, be ineffective to the extent of such prohibition or unenforceability without invalidating the remaining provisions hereof or affecting the validity of enforceability of such provision in any other jurisdiction.
13. Eldorado's failure at any time to enforce any of the terms or conditions stated herein shall not be construed to be a waiver of such provisions.
14. This warranty shall be interpreted under the laws of the State of New York.
15. Neither the sales personnel nor other agents of Eldorado are authorized to make warranties about the merchandise described in this contract.

ORAL STATEMENTS BY ELDORADO EMPLOYEES OR AGENTS DO NOT CONSTITUTE WARRANTIES, SHALL NOT BE RELIED UPON BY THE BUILDING OWNER OR ANY THIRD PARTY, AND ARE NOT PART OF THE CONTRACT FOR SALE OR WARRANTY STATED HEREIN. NO DISTRIBUTOR, DEALER, OR REPRESENTATIVE OF ELDORADO STONE HAS THE AUTHORITY TO CHANGE OR MODIFY THIS WARRANTY EITHER ORALLY OR IN WRITING IN ANY RESPECT. THE ENTIRE AND FINAL CONTRACT IS EMBODIED IN THIS WRITING AND NO OTHER WARRANTIES ARE GIVEN BEYOND THOSE SET FORTH IN THIS WRITING.



A **BORAL®** Brand