



PD97 MORTISE LOCKSETS FOR SLIDING AND POCKET DOOR

With X Series Trim Or Surface Pull

INSTALLATION INSTRUCTIONS

(PM-IS2900-E1)



Unison Hardware Inc.

6 Wayne Court, Sacramento, CA 95829, USA

Tel: +1.916.388.1888 Fax: +1.916.388.8322

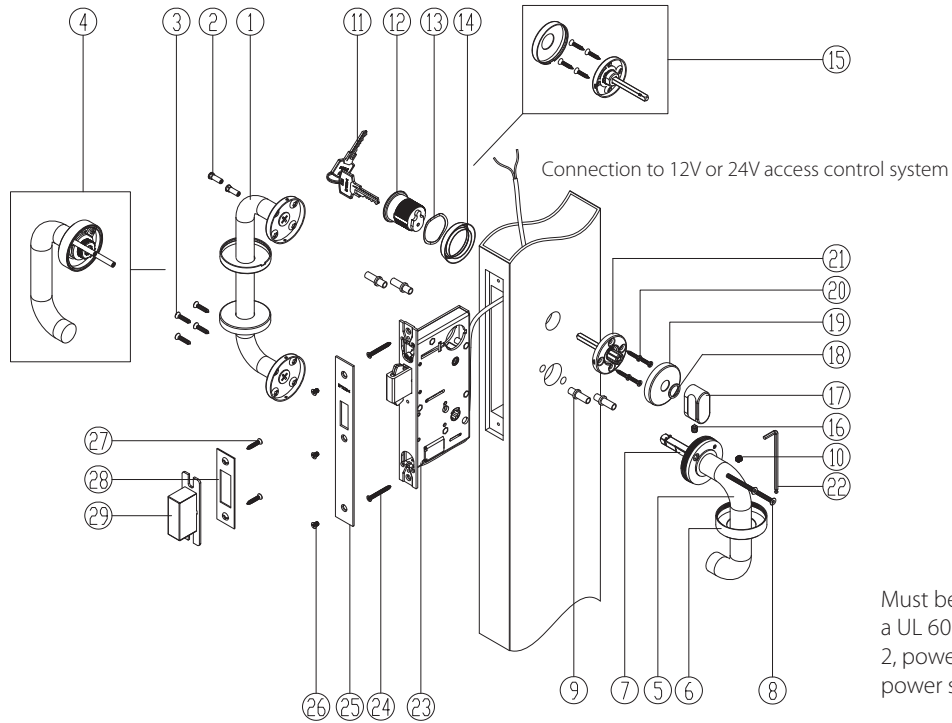
Email: info@unisonhardware.com Web: www.inoxproducts.com

The products are intended to be installed in accordance with the installation wiring diagram, mechanical assembly drawings provided with each product, the local authority having jurisdiction (AHJ) and the National Electric Code, NFPA 70. When installed in fail secure mode, the local authority shall be consulted with regard to the use of possible panic hardware to allow emergency exit from the secure area.

Only the lock body was evaluated to UL 1034. All accessories are shown for reference only.

Static Strength: 500 lbs.
Dynamic Strength: 70 ft-lbs.

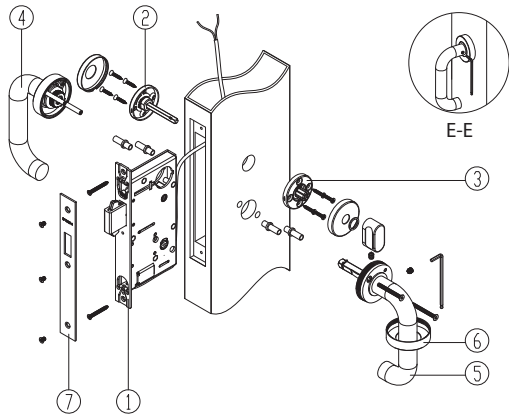
PD97 Series Pocket Door Lock Parts List: (with X series trim or Surface Pull)



Item	No.	Parts List	Function					Note	
			Privacy	Entry	Patio	Classroom	Storeroom	Lever by Lever	Lever by Pull Handle
Lever set Parts	1	Outside surface pull	1 EA	1 EA	1 EA	1 EA	1 EA	N/A	
	2	Bolt sleeves for surface pull	2 EA	2 EA	2 EA	2 EA	2 EA	N/A	
	3	Wood screws for surface pull	4 EA	4 EA	4 EA	4 EA	4 EA	N/A	
	4	Outside X series trim	1 EA	1 EA	1 EA	1 EA	1 EA		N/A
	5	Inside X series trim	1 EA	1 EA	1 EA	1 EA	1 EA		
	6	X series inside rose cover	1 EA	1 EA	1 EA	1 EA	1 EA		
	7	8x1-3/4" (45mm) spring spindle	1 EA	1 EA	1 EA	1 EA	1 EA		
	8	M4x1-3/8" (35mm) machine screw	2 EA	2 EA	2 EA	2 EA	2 EA		
	9	Compression inserts	4 EA	4 EA	4 EA	4 EA	4 EA		
	10	M6 set screw for X series trim	1 EA	1 EA	1 EA	1 EA	1 EA		
	11	Key	-	3 EA	-	3 EA	3 EA		
	12	Mortise Cylinder	-	1 EA	-	1 EA	1 EA		
	13	Washer	-	1 EA	-	1 EA	1 EA		
	14	Escutcheon ring	-	1 EA	-	1 EA	1 EA		
	15	Coin turn rose cover, screw, sub rose	1 EA	-	-	-	-		
	16	M6 set screw for t-turn	1 EA	1 EA	1 EA	-	-		
	17	Thumb-turn rose with spindle	1 EA	1 EA	1 EA	-	-		
	18	Clear Washer	1 EA	1 EA	1 EA	-	-		
	19	Thumb-turn rose cover	1 EA	1 EA	1 EA	-	-		
	20	Screw for thumb-turn	4 EA	4 EA	4 EA	-	-		
	21	Thumb-turn sub rose	1 EA	1 EA	1 EA	-	-		
	22	3mm Allen Key	1 EA	1 EA	1 EA	1 EA	1 EA		
Locks	23	Mortise Pocket Lock	1 EA	1 EA	1 EA	1 EA	1 EA		
	24	Screws for Inner Faceplate	2 EA	2 EA	2 EA	2 EA	2 EA		
	25	Armored Faceplate	1 EA	1 EA	1 EA	1 EA	1 EA		
	26	Screws for Armored Faceplate	3 EA	3 EA	3 EA	3 EA	3 EA		
	27	Screws for Strike Plate	2 EA	2 EA	2 EA	2 EA	2 EA		
	28	Strike Plate	1 EA	1 EA	1 EA	1 EA	1 EA		
Others	29	Dust Box	1 EA	1 EA	1 EA	1 EA	1 EA		
		Door Prep Template	1 EA	1 EA	1 EA	1 EA	1 EA		
		Installation Instruction	1 EA	1 EA	1 EA	1 EA	1 EA		

X series Trim with PD97 Pocket Door Lock Installation Instructions:

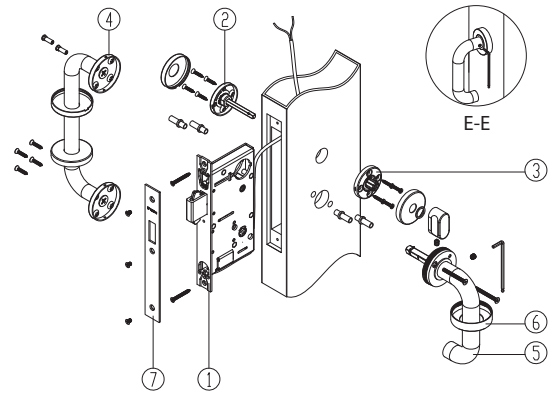
For Privacy w/Emergency Release Function: PD9740



1. Insert the lock wire through the lock slot and pull it out to connect with the electronic control system. Then install mortise lockcase.
2. Install outside coin turn and tighten screws
3. Install inside thumbturn sub rose and tighten screws
4. Install outside dummy lever
5. Install inside X series trim and tighten the screws
6. Mount the emergency release rose cover.
- ▲ Note: please fully tighten the set screw under the lever after it is installed. See Section E-E.
7. Install armored faceplate with screws.

Surface Pull with PD97 Pocket Door Lock Installation Instructions:

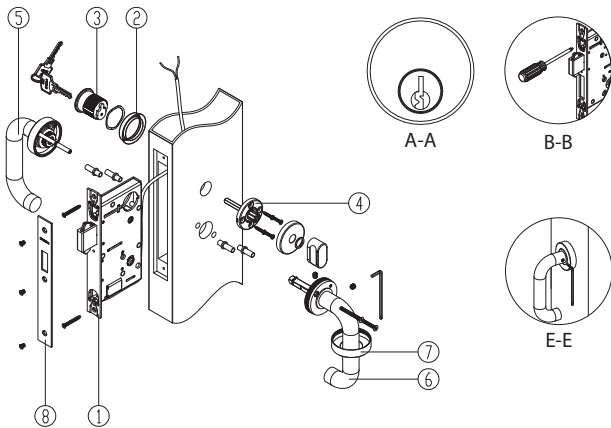
For Privacy w/Emergency Release Function: PD9740



1. Insert the lock wire through the lock slot and pull it out to connect with the electronic control system. Then install mortise lockcase.
2. Install outside coin turn and tighten screws
3. Install inside thumbturn sub rose and tighten screws
4. Install outside surface pull
5. Install inside X series trim and tighten the screws
6. Mount the emergency release rose cover.
- ▲ Note: please fully tighten the set screw under the lever after it is installed. See Section E-E.
7. Install armored faceplate with screws.

X series Trim with PD97 Pocket Door Lock Installation Instructions:

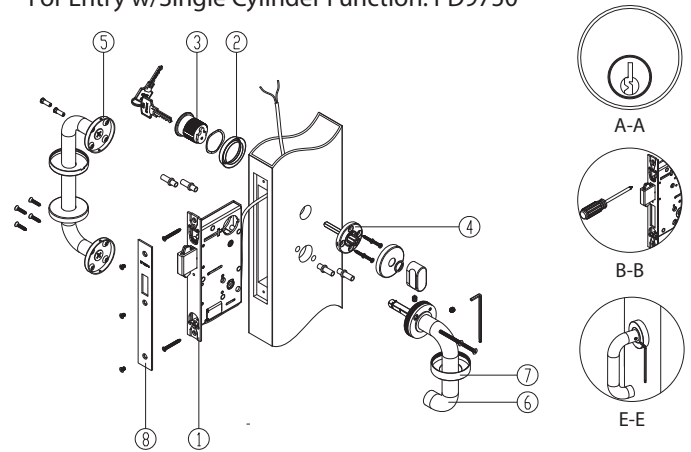
For Entry w/Single Cylinder Function: PD9750



1. Insert the lock wire through the lock slot and pull it out to connect with the electronic control system. Then install mortise lockcase.
- ▲ Note: DO NOT tighten faceplate screws until after installing cylinder.
2. Screw on cylinder with escutcheon ring.
- ▲ Note: Key slot on cylinder should be on lower off-center position. See section A-A.
3. Use a screw driver to tighten yoke inside lock case through faceplate to fix the cylinder in position. See Section B-B.
4. Mount privacy thumbturn rose with 4x#6 screws. Mount rose cover and clear washer before mounting thumb-turn piece. Then tighten the set screw using Allen key.
5. Install outside dummy X series trim
6. Install inside X series trim and tighten screws.
7. Install Rose cover
- ▲ Note: please fully tighten the set screw under the lever after it is installed. See Section E-E.
8. Install armored faceplate with screws.

Surface Pull with PD97 Pocket Door Lock Installation Instructions:

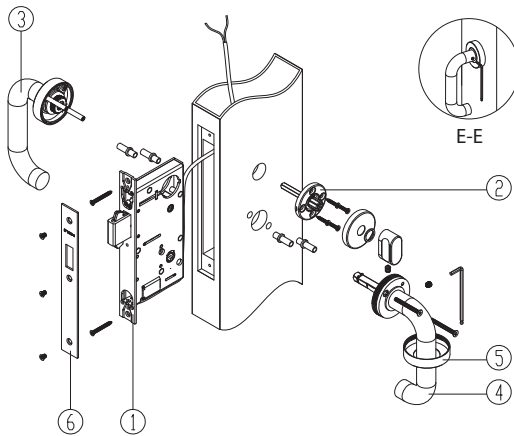
For Entry w/Single Cylinder Function: PD9750



1. Insert the lock wire through the lock slot and pull it out to connect with the electronic control system. Then install mortise lockcase.
- ▲ Note: DO NOT tighten faceplate screws until after installing cylinder.
2. Screw on cylinder with escutcheon ring.
- ▲ Note: Key slot on cylinder should be on lower off-center position. See section A-A.
3. Use a screw driver to tighten yoke inside lock case through faceplate to fix the cylinder in position. See Section B-B.
4. Mount privacy thumbturn rose with 4x#6 screws. Mount rose cover and clear washer before mounting thumb-turn piece. Then tighten the set screw using Allen key.
5. Install Outside surface pull
6. Install inside X series trim and tighten screws.
7. Install Rose cover
- ▲ Note: please fully tighten the set screw under the lever after it is installed. See Section E-E.
8. Install armored faceplate with screws.

X series Trim with PD97 Pocket Door Lock Installation Instructions:

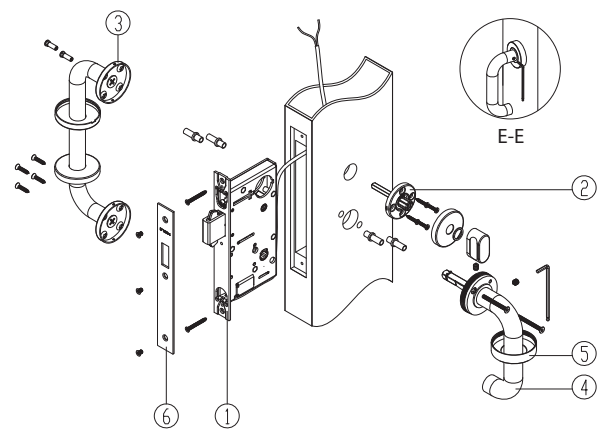
Deadbolt operated by Thumbturn from inside only. Patio Function: PD9760



1. Insert the lock wire through the lock slot and pull it out to connect with the electronic control system. Then install mortise lockcase.
 2. Install inside Thumbturn and tighten screws
 3. Install outside dummy lever
 4. Install inside X series trim and tighten the screws
 5. Mount the rose cover.
- ▲ Note: please fully tighten the set screw under the lever after it is installed. See Section E-E.
6. Install armored faceplate with screws.

Surface Pull with PD97 Pocket Door Lock Installation Instructions:

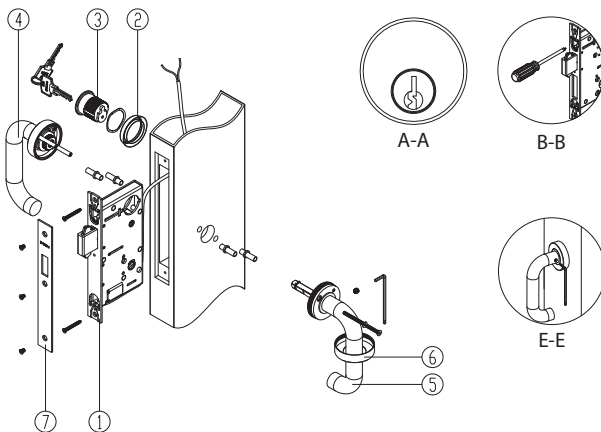
Deadbolt operated by Thumbturn from inside only. Patio Function: PD9760



1. Insert the lock wire through the lock slot and pull it out to connect with the electronic control system. Then install mortise lockcase.
 2. Install inside thumbturn sub rose and tighten screws
 3. Install Outside surface pull
 4. Install inside X series trim and tighten the screws
 5. Mount the rose cover.
- ▲ Note: please fully tighten the set screw under the lever after it is installed. See Section E-E.
6. Install armored faceplate with screws.

X series Trim with PD97 Pocket Door Lock Installation Instructions:

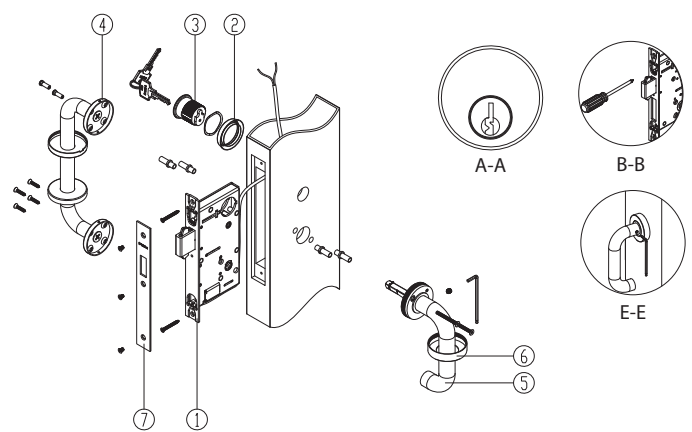
For Entry w/Single Cylinder Function: PD9770/PD9780



1. Insert the lock wire through the lock slot and pull it out to connect with the electronic control system. Then install mortise lockcase.
- ▲ Note: DO NOT tighten faceplate screws until after installing cylinder.
2. Screw on cylinder with escutcheon ring.
- ▲ Note: Key slot on cylinder should be on lower off-center position. See section A-A.
3. Use a screw driver to tighten yoke inside lock case through faceplate to fix the cylinder in position. See Section B-B.
 4. Install outside dummy X series trim
 5. Install inside X series trim and tighten screws.
 6. Install Rose cover
- ▲ Note: please fully tighten the set screw under the lever after it is installed. See Section E-E.
7. Install armored faceplate with screws.

Surface Pull with PD97 Pocket Door Lock Installation Instructions:

For Entry w/Single Cylinder Function: PD9770/PD9780



1. Insert the lock wire through the lock slot and pull it out to connect with the electronic control system. Then install mortise lockcase.
- ▲ Note: DO NOT tighten faceplate screws until after installing cylinder.
2. Screw on cylinder with escutcheon ring and washer.
 3. Use a screw driver to tighten yoke inside lock case through faceplate to fix the cylinder in position. See Section B-B.
- ▲ Note: Key slot on cylinder should be on lower off-center position. See Section A-A.
4. Install Outside surface pull
 5. Install inside X series trim.
 6. Mount the rose cover.
- ▲ Note: please fully tighten the set screw under the lever after it is installed. See Section E-E.
7. Install armored faceplate with screws.

Note: Operation hardware must send power for a minimum of 3 seconds to fully complete the locking & unlocking function. The lock must be correctly aligned with the strike to ensure proper operation. (We recommend using a soft close system for alignment). If an alignment issue prevents the locking operation the alarm will sound & the bolt will retract to the unlocked position. (Correct the alignment & retry operation).