



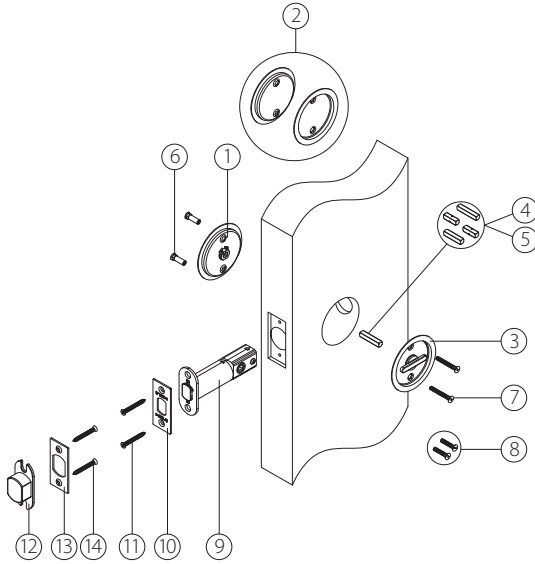
PD2000 EDGE-PULL LOCKSETS FOR SLIDING AND POCKET DOOR

With FH12/FH13/FH22CF/FH23CF Trim

INSTALLATION INSTRUCTIONS

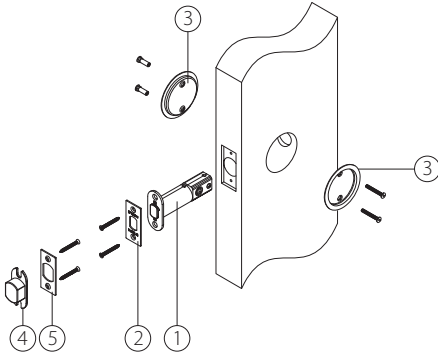
(PM-IS3101-E1)

PD2000 Series Edge-Pull Lock Part List: (with FH12/FH13 trim)



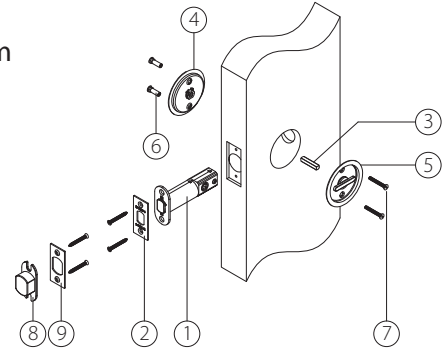
Item	NO.	Parts List	Function	
			Passage	Privacy
Trims	1	Outside Flush Pull	-	1
	2	Passage Flush Pulls	2	-
	3	Inside Flush Pull	-	1
	4	5x28(1-3/8" thick doors) Single Long Spindle	-	1
	5	5x18(1-3/4" thick doors) Small Spindle	-	2
	6	M4x16 Nut	2	2
	7	M4x30(1-3/4" thick doors) Screw	2	2
	8	M4x20(1-3/8" thick doors) Screw	2	2
Locks	9	Edge Pull Lock Case	1	1
	10	Faceplate	1	1
	11	Screws for Faceplate	2	2
	12	Dust Box	1	1
	13	Strike Plate	1	1
	14	Screws for Strike Plate	2	2
Others	15	Door Prep Template	1	1
	16	Installation Instruction	1	1

For Passage Function: PD2061 with FH12/FH13 Trim



1. Install lock case.
2. Mount lock faceplate with screws.
3. Install outside and inside passage flush pulls.
Use proper screws based on the door thickness.
4. Install the strike box.
5. Install the strike plate with screws.

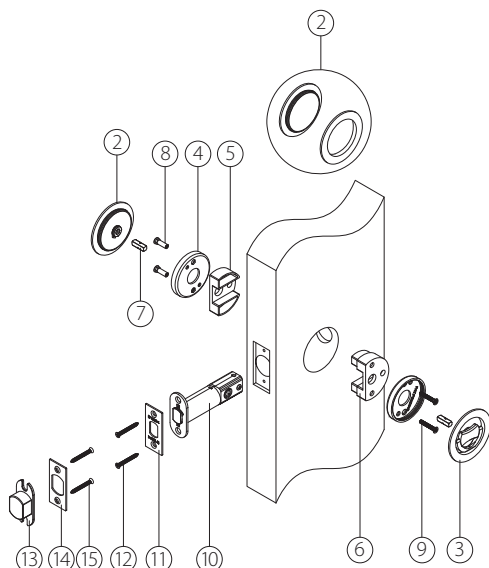
For Privacy Function: PD2062 with FH12/FH13 Trim



1. Install lock case.
2. Mount lock faceplate with screws.
3. Install spindle. For 1-3/8"(35mm) door thickness, please use single long spindle.
For 1-3/4"(45mm) door thickness please use both small spindles.
4. Install outside flush pull with coin release and install the spindle into the thumb-turn hub.
5. Install inside flush pull and make sure the spindle is in the thumb-turn groove.
6. Install outside nuts.
7. Install inside screws. Use proper screws based on the door thickness.
(Do not use power tools for trim screw installation.)
8. Install the strike box.
9. Install the strike plate with screws.

PD2000 Series Edge-Pull Lock Part List:

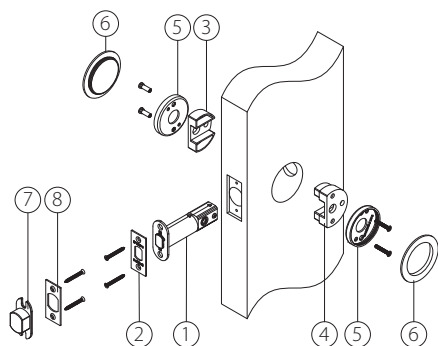
(with FH22CF/FH23CF trim for 1-3/4" Thick doors only)



Item	NO.	Parts List	Function	
Trims			Passage	Privacy
	1	Outside Flush Pull	-	1
	2	Passage Flush Pull	2	-
	3	Inside Flush Pull	-	1
	4	Subrose	2	2
	5	Female Bracket	1	1
	6	Male Bracket	1	1
	7	5x18(1-3/4" thick doors) Small Spindle	-	2
	8	M4x16 Nut	2	2
	9	M4x20 Screw	2	2
Locks	10	Edge Pull Lock Case	1	1
	11	Faceplate	1	1
	12	Screws for Faceplate	2	2
	13	Dust Box	1	1
	14	Strike Plate	1	1
	15	Screws for Strike Plate	2	2
Others	16	Door Prep Template	1	1
	17	Installation Instruction	1	1

For Passage Function:

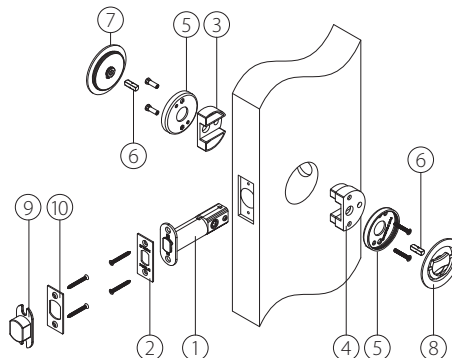
PD2061 with FH22CF/FH23CF Trim



1. Install lock case.
2. Mount lock faceplate with screws.
3. Mount Female Bracket.
4. Mount Male Bracket.
5. Mount outside and inside subrosettes.
6. Install outside and inside passage flush pulls.
7. Install the strike box.
8. Install the strike plate with screws.

For Privacy Function:

PD2062 with FH22CF/FH23CF Trim



1. Install lock case.
2. Mount lock faceplate with screws.
3. Mount Female Bracket.
4. Mount Male Bracket.
5. Mount outside and inside subrosettes.
6. Install inside and outside small spindles.
7. Install outside flush pull with coin release.
8. Install inside flush pull.
9. Install the strike box.
10. Install the strike plate with screws.

Unison Hardware Inc.

6 Wayne Court, Sacramento, CA 95829, USA
 Tel: +1.916.388.1888 Fax: +1.916.388.8322
 Email: info@unisonhardware.com Web: www.inoxproducts.com