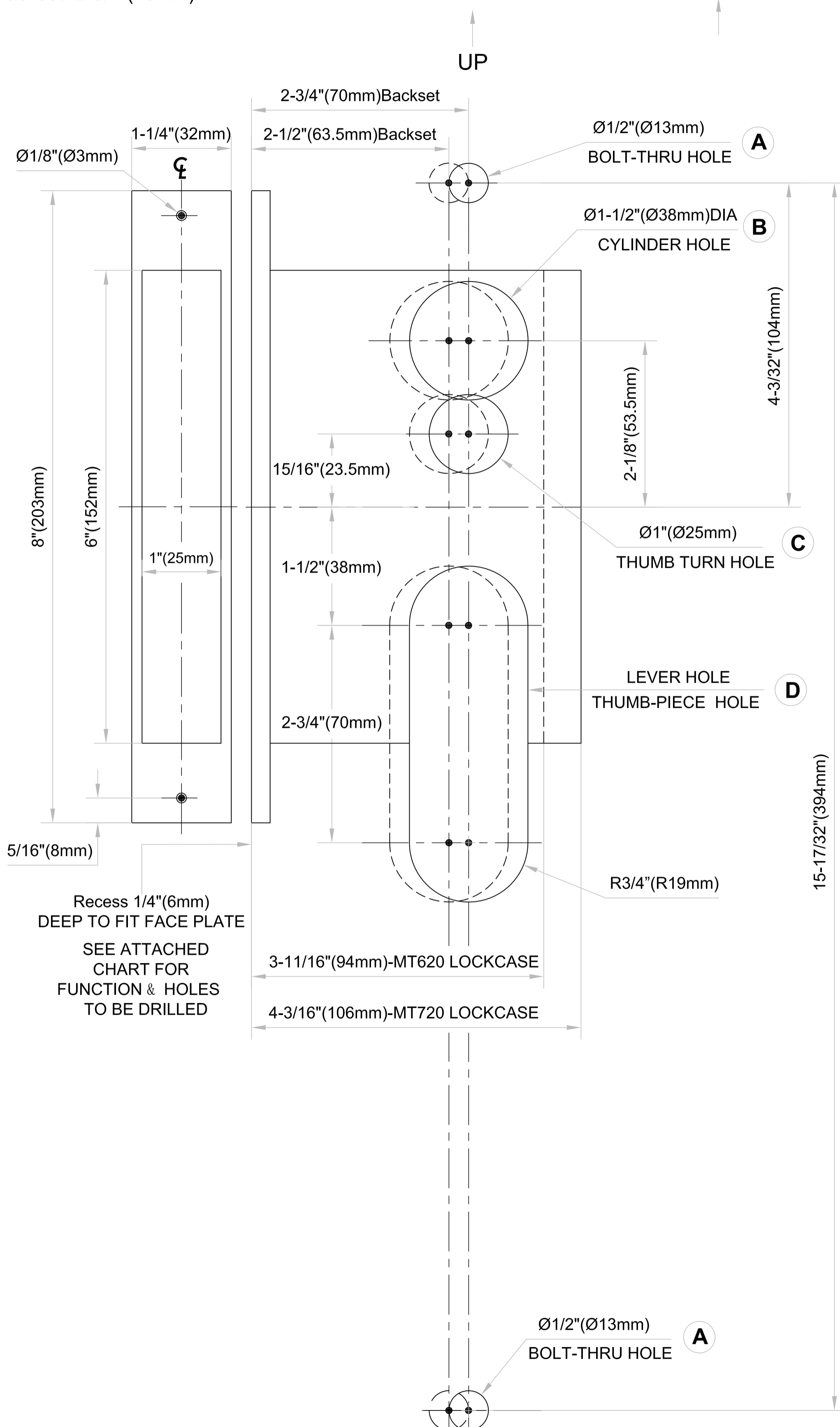


MT620 Case Size: 3-11/16" x 6" x 7/8"(94mm x 152mm x 22mm)
 MT620 Backset: 2-1/2"(63.5mm)
 MT720 Case Size: 4-3/16" x 6" x 7/8"(106mm x 152mm x 22mm)
 MT720 Backset: 2-3/4"(70mm)

Lock Front: 1-1/4" x 8" x 1/4"(32mm x 203mm x 6mm)
 Lever to Cylinder: 3-5/8"(92mm)
 Lever to Thumb Turn : 2-7/16"(62mm)



Door preparation using template supplied.

Please read the Installation Instruction Carefully before drilling any holes on the door.
 Choose the correct holes to drill for the corresponding functions.

Function	Item Ref.	Outside Holes				Inside Holes			
		A	B	C	D	A	B	C	D
Entry	...MT620/720...	●	●			●		●	●
Dummy	...MTEDP...	●	●			●			●

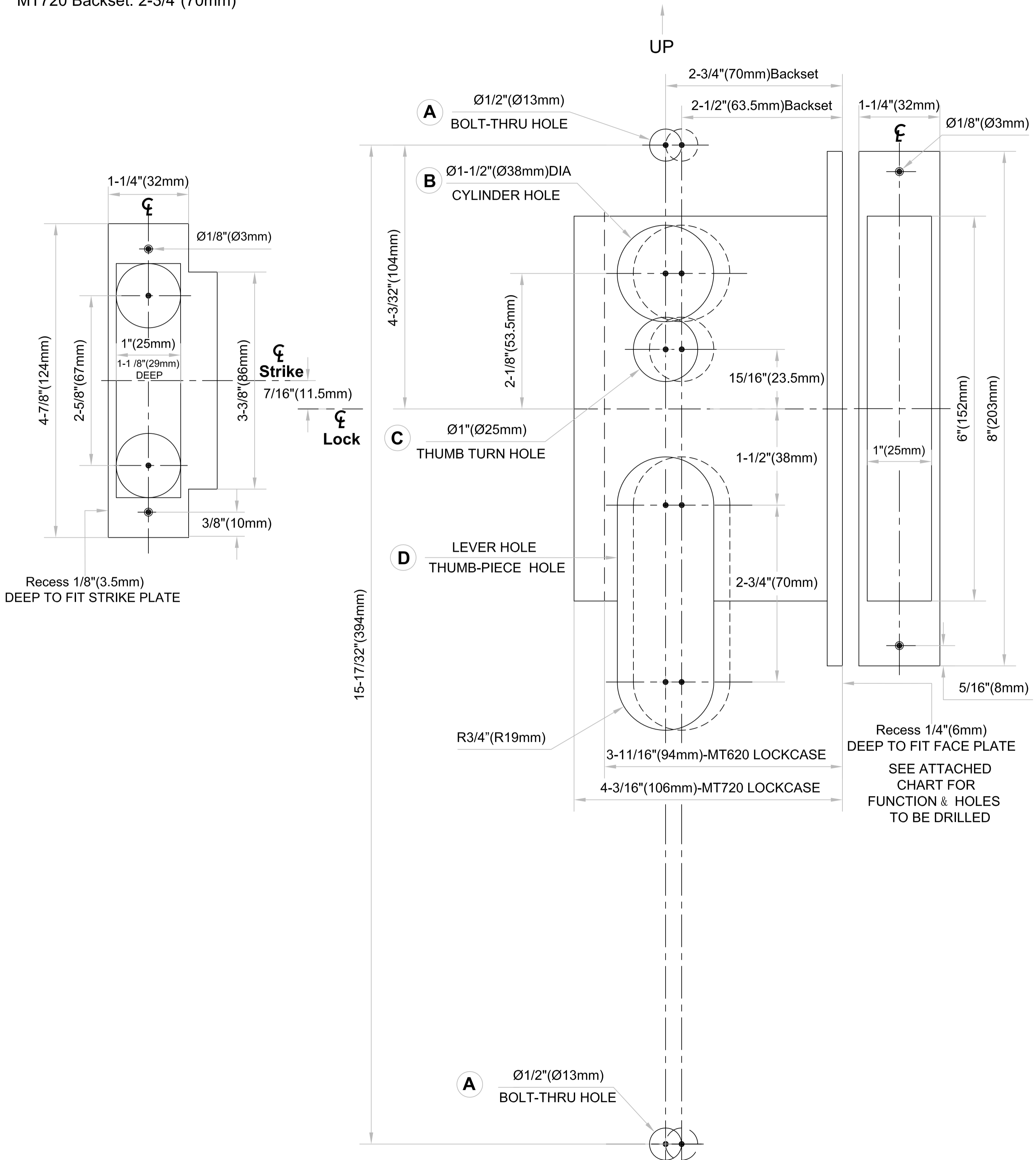
FOR OPPOSITE HAND
PLEASE SEE REVERSE SIDE

Match With Vertical Line Drawn On Door

Dimensions do not provide allowances for door silencers,
 weather stripping, sound proofing or other additions to door or door frames.

MT620 Case Size: 3-11/16" x 6" x 7/8" (94mm x 152mm x 22mm)
 MT620 Backset: 2-1/2" (63.5mm)
 MT720 Case Size: 4-3/16" x 6" x 7/8" (106mm x 152mm x 22mm)
 MT720 Backset: 2-3/4" (70mm)

Lock Front: 1-1/4" x 8" x 1/4" (32mm x 203mm x 6mm)
 Lever to Cylinder: 3-5/8" (92mm)
 Lever to Thumb Turn : 2-7/16" (62mm)



FOR OPPOSITE HAND
PLEASE SEE REVERSE SIDE

Match With Vertical Line Drawn On Door

Dimensions do not provide allowances for door silencers,
weather stripping, sound proofing or other additions to door or door frames.