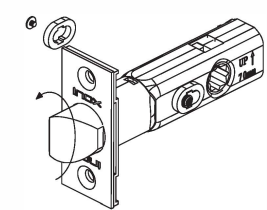


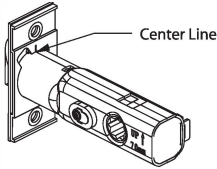


Change Latch Bolt Direction For TL4 Latch

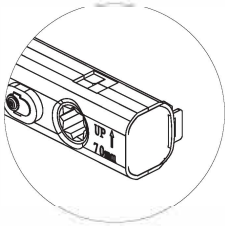
TL4 Latch  
28 degree retraction latch



Determine door handing for latch and remove INSIDE washer ( privacy pin side ). Change the latch direction 180° with the faceplate together .  
Note: Be sure to install the latch with faceplate attached to the latch body.

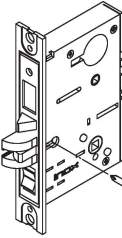


Note: Please ensure the center line on the back of the faceplate meets the center seam of the latch case.

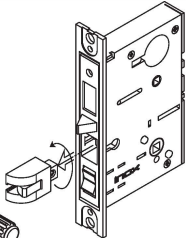


Note: Please ensure the latch has the Arrow facing up.

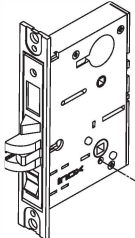
Change Latch Bolt Direction For MC Mortise Lock



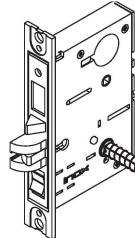
Release the latch screw



Change latch direction and secure with screw



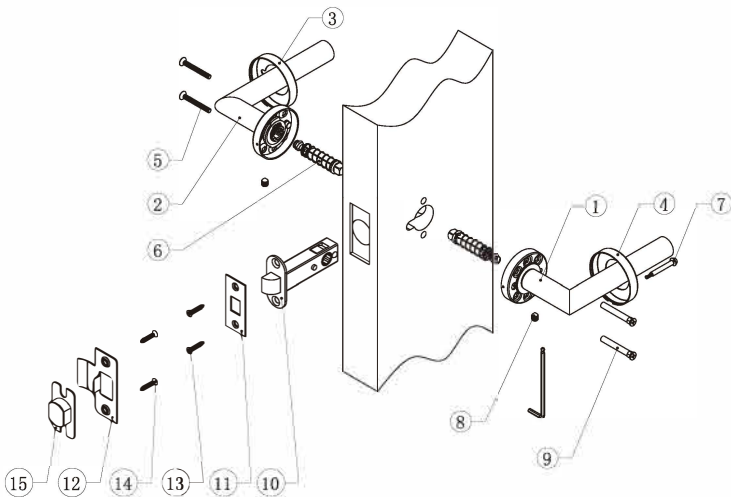
Release set screw under spindle hub to be the outside hub



Use spindle to turn the hub until latch retracts



GT/GS Rose with Tubular Latch Parts List:



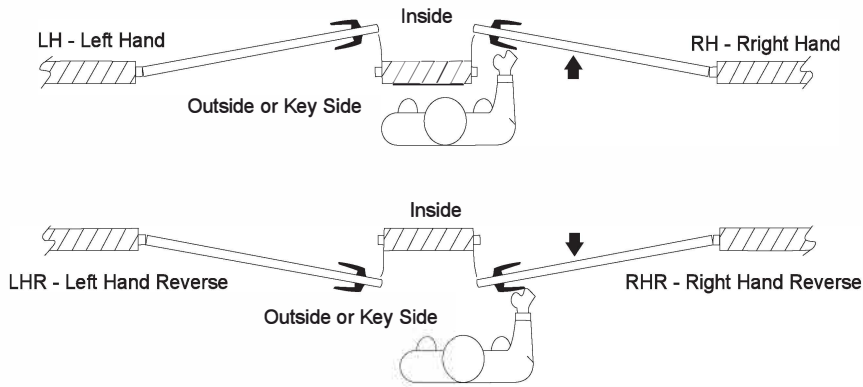
Items	No.	Parts Description	Function				
			Privacy	Passage	Full Dummy	Half Dummy	Half Passage
Lever/set Parts	1	GT Rose Outside w/Lever	1 EA	1 EA	1 EA	1 EA	1 EA
	2	GT Rose Inside w/Lever	1 EA	1 EA	1 EA	-	-
	3	GT Inside Rose Cover	1 EA	1 EA	1 EA	-	1 EA
	4	GT Outside Rose Cover	1 EA	1 EA	1 EA	1 EA	1 EA
	5	M4 x 1-3/8" (35mm) Machine Screw	2 EA	2 EA	-	-	2 EA
	6	8x1-3/4" (45mm) Spring Spindle	2 EA	2 EA	-	-	1 EA
	7	Privacy Pin	1 EA	-	-	-	-
	8	Set Screw	2 EA	2 EA	2 EA	1 EA	1 EA
	9	M4x40mm Bolt Sleeves	2 EA	2 EA	-	-	2 EA
Locks	-	#8x1" Wood Screws	-	-	8 EA	4 EA	-
	10	Tubular Latch	1 EA	1 EA	-	-	1 EA
	11	Tubular Latch Faceplate	1 EA	1 EA	-	-	1 EA
	12	Tubular Latch Striking Plate	1 EA	1 EA	-	-	1 EA
	13	8# Screws for tubular latch faceplate	2 EA	2 EA	-	-	2 EA
	14	8# Screws for tubular latch Striking Plate	2 EA	2 EA	-	-	2 EA
Others	15	Tubular Latch Dust Box	1 EA	1 EA	-	-	1 EA
	-	Door Prep Template	1 EA	1 EA	-	-	1 EA
	-	Installation Instruction	1 EA	1 EA	1 EA	1 EA	1 EA

GT/GS/GR/SR  
Installation Instructions

Tubular Latch  
Mortise Lock  
Privacy Bolt

( PM-TM2000-V120522 )

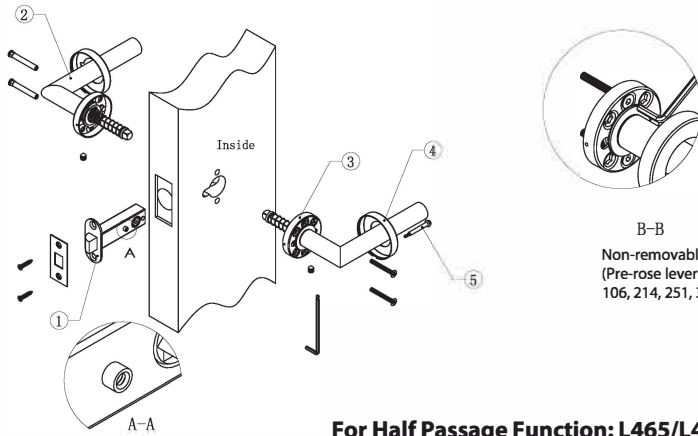
Determine Door Handing and Set Lock Case Direction



GT/GS Rose with Tubular Latch Installation Instructions:

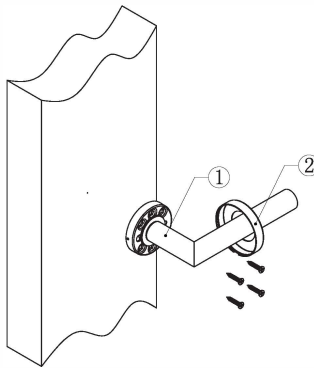
For Passage/Privacy Function: L461/L462/L471/L472

1. Install tubular latch with 2x #8 Screws.  
Note: For privacy, privacy pin hub with thread facing inside of door – see Section A.
2. Install outside lever with 2 EA M4x40mm bolt sleeves.
3. Install inside lever with 2 EA M4x35mm machine screws;  
Then tightening the set screw using allen key.  
Note: For non-removable rose designs, use M4x35mm hexagon with allen key, see Section B.
- ⚠ Note: Please ensure levers on both sides are at horizontal level before tightening machine screws.
4. Mount inside and outside rose cover (snap-on)
5. For privacy function, insert privacy pin into latch privacy pin hub (Section A).



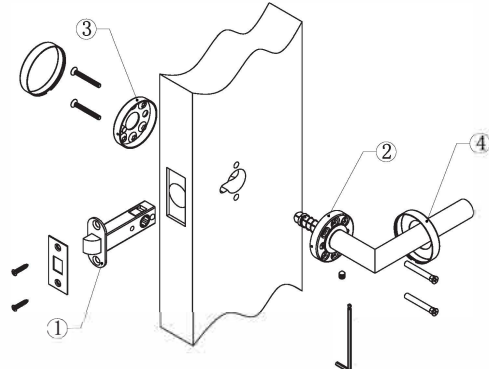
For Dummy Function: DL or DR

1. Install lever with 4 x #8 wood screws  
⚠ Note: Please ensure the lever is at horizontal level before tightening wood screws.
2. Mount rose cover.

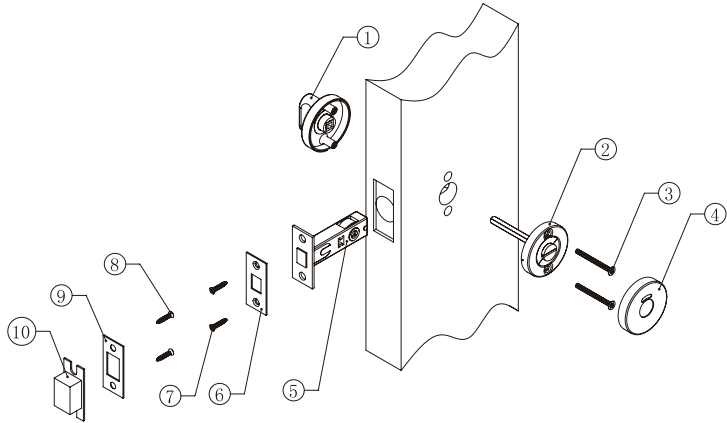


For Half Passage Function: L465/L475

1. Install tubular latch with 2x #8 Screws.
2. Install outside lever with 2 EA M4x40mm bolt sleeves.
3. Mount inside sub rose with 2 EA M4x35mm machine screws.  
Then tightening the set screw using allen key.  
Note: For non-removable rose designs, use M4x35mm hexagon with allen key, see Section B.
- ⚠ Note: Please ensure the lever is at horizontal lever before tightening machine screws.
4. Mount inside and outside rose cover.



GT/GS Privacy Bolt



Parts List

1. GT/GS Inside Rose with Thumb-turn

2. GT/GS Outside Less Cover

3. 2 x M4 Machine Screws

4. GT/GS Outside Cover with or without Indicator Window
5. Tubular Privacy Bolt

6. Faceplate for Privacy Bolt

7. Screws for Face plate (2 x #8 Screws)

8. Screws for Striking Plate (2 x #8 Screws)

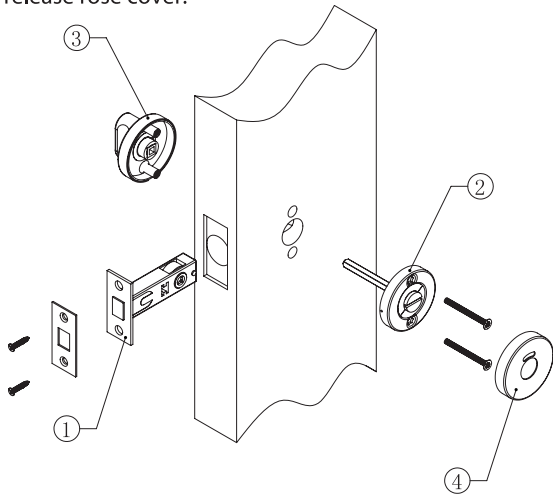
9. Privacy Bolt Striking Plate

10. Privacy Bolt Dust Box

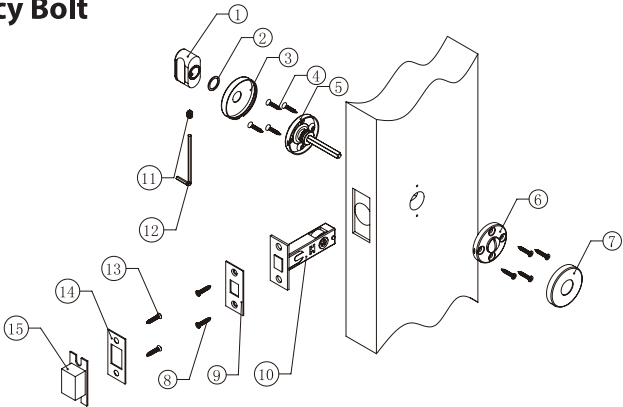
Installation Steps

1. Install tubular deadbolt latch with 2 x #8 Screws.

Note: Please ensure the latch tongue is inside latch casing.
2. Mount privacy release rose with spindle.
3. Mount privacy thumb-turn with rose and then tightening the release rose with 2 EA machine screws.
4. Mount privacy release rose cover.



GR/SR Privacy Bolt



Parts List

1. GR/SR Thumb-turn

2. Thumb-turn Washer

3. GT/SR Privacy Escutcheon

4. 8 x #6 Wood Screws

5. GR/SR Inside Less Cover

6. GR/SR Outside sub cover with release

7. GR/SR Outside Cover
8. Screws for Face plate (2 x #8 Screws)

9. Faceplate for Privacy Bolt

10. Tubular Privacy Bolt

11. Set Screw for Thumb-turn

12. Allen Key

13. Screws for Striking Plate (2 x #8 Screws)

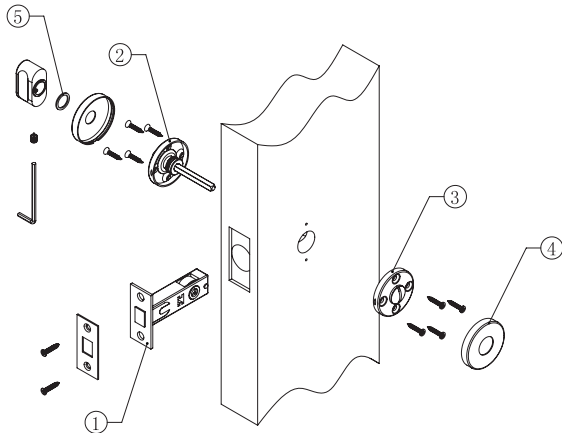
14. Privacy Bolt Striking Plate

15. Privacy Bolt Dust Box

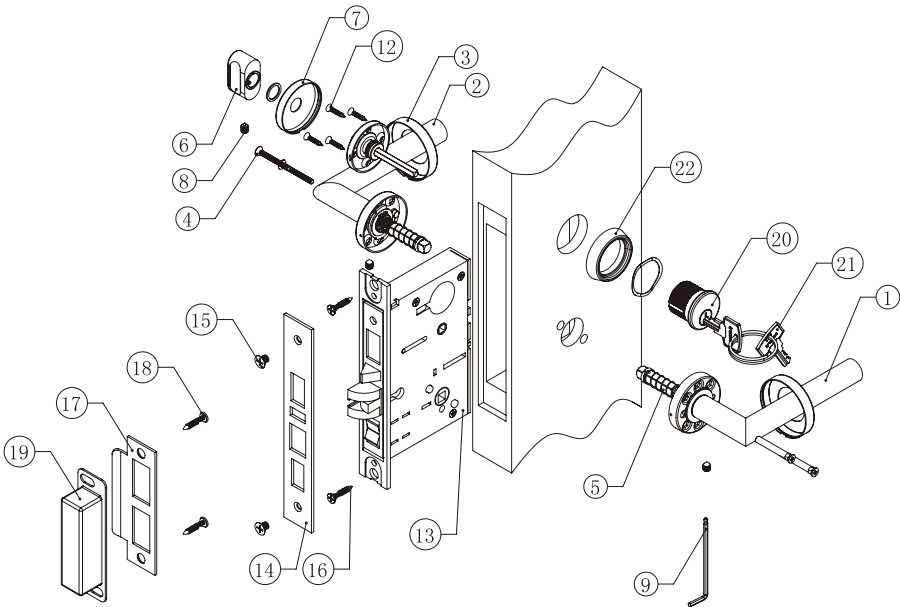
Installation Steps

1. Install tubular deadbolt latch with 2 x #8 Screws.

Note: Please ensure the latch tongue is inside latch casing.
2. Mount privacy thumb-turn rose with spindle with 4 x #6 screws.
3. Mount privacy release rose with 4 x #6 screws.
4. Mount the privacy release rose cover.
5. Mount thumb-turn rose cover and clear washer before mounting thumb-turn piece. Tighten the set screw inside thumb-turn piece using allen key.



GT/GS Rose with MC Mortise Lock Parts List:



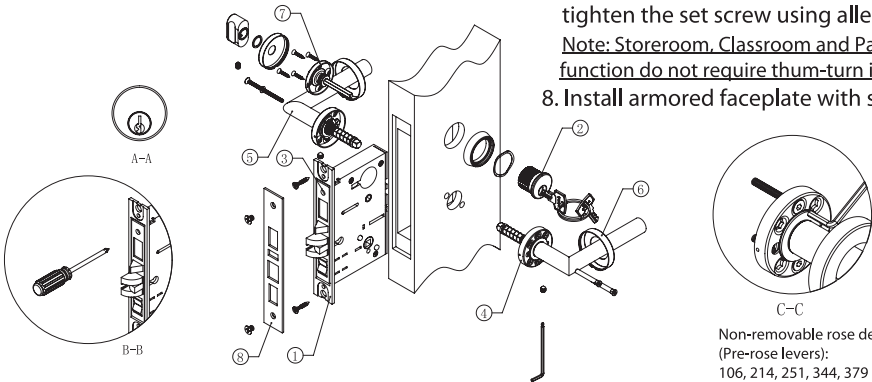
Items	No.	Parts Description	Function			
			Entry (F20/F04/F38	Classroom (F05) Storeroom (F07)	Privacy (F22)	Passage (F01)
Leverset Parts	1	GT/GS Roses outside w/ Lever & Cover	1 EA	1 EA	1 EA	1 EA
	2	GT/GS Roses Inside w/ Lever	1 EA	1 EA	1 EA	1 EA
	3	GT/GS Inside rose Cover	1 EA	1 EA	1 EA	1 EA
	4	M4x1-3/8"(35mm) Machine Screw	2 EA	2 EA	2 EA	2 EA
	5	8x1-3/4"(45mm) spring Spindles	2 EA	2 EA	2 EA	2 EA
	6	TT04 Thumb-turn rose with Spindle	1 EA	—	1 EA	—
	7	Thumb-turn rose cover	1 EA	—	1 EA	—
	8	M6 Set Screw for t-turn	1 EA	—	1 EA	—
	9	3mm Allen Key	1 EA	1 EA	1 EA	1 EA
	10	Privacy Release	—	—	1 EA	—
	11	Privacy Release rose cover	—	—	1 EA	—
	12	#6 screws for TT04 Thumb-turn	4 EA	—	4 EA	—
Locks and Cylinders	13	Mortise Lock Case	1 EA	1 EA	1 EA	1 EA
	14	Armored Faceplate	1 EA	1 EA	1 EA	1 EA
	15	#8 screws for Armored Faceplate	2 EA	2 EA	2 EA	2 EA
	16	#10 screws for Inner Faceplate	2 EA	2 EA	2 EA	2 EA
	17	Striking Plate	1 EA	1 EA	1 EA	1 EA
	18	Screws for Striking Plate	2 EA	2 EA	2 EA	2 EA
	19	Dust Box	1 EA	1 EA	1 EA	1 EA
	20	Mortise Cylinder	1 EA	1 EA	—	—
	21	Key	2 EA	2 EA	—	—
	22	Cylinder Escutcheon Ring	1 EA	1 EA	—	—
Others	—	Door Prep Template	1 EA	1 EA	1 EA	1 EA
	—	Installation Instruction	1 EA	1 EA	1 EA	1 EA

GT/GS Rose with MC Mortise Lock Installation Instructions:

For Entry, Storeroom, Classroom, Passage Function:  
MC720, MC738, MC704, MC705, MC707, MC701

1. Install mortise lockcase;

Note: Do NOT tighten faceplate screws until after installing cylinder.
2. Screw on cylinder with escutcheon ring.  
Note: Key slot on cylinder should be on lower off-center position. See Section A-A  
Note: Use keys to test cylinder and make sure cylinder cam operates deadbolt smoothly.
3. Use a screw driver to tighten yoke inside lock case through faceplate to fix the cylinder in position. See Section B-B
4. Install outside lever with 2 EA M4x40mm bolt sleeves.
5. Install inside lever with 2 EA M4x35mm machine screws; Then tightening the set screw using allen key.  
Note: For non-removable rose designs, use M4x35mm hexagon with allen key. see Section C  
Note: Please ensure levers on both sides are at horizontal level before tightening machine screws.
6. Mount inside and outside rose covers (snap on).
7. For entry function, mount privacy thumb-turn rose with 4x#6 screws. Mount rose cover and clear washer before mounting thumb-turn piece. Then tighten the set screw using allen key. Note: Storeroom, Classroom and Passage function do not require thum-turn inside.
8. Install armored faceplate with screws.



For Privacy Function: MC722

1. Install mortise lockcase.

Note: Do NOT tighten faceplate screws until after installing cylinder.
2. Install outside lever with 2 EA M4x40mm bolt sleeves.
3. Install inside lever with 2 EA M4x35mm machine screws, then tighten the set screw using the allen key.  
Note: For non-removable rose designs, use M4x35mm hexagon with allen key. see Section C  
Note: Please ensure levers on both sides are at horizontal lever before tightening machine screws.
4. Mount inside and outside rose cover.
5. Mount privacy thumb-turn rose with spindle with 4 x #6 screws.
6. Mount privacy release rose with 4 x #6 screws.
7. Mount the privacy release rose cover.
8. Mount thumb-turn rose cover and clear washer before mounting thumb-turn piece. Tighten the set screw inside thumb-turn piece using allen key.

