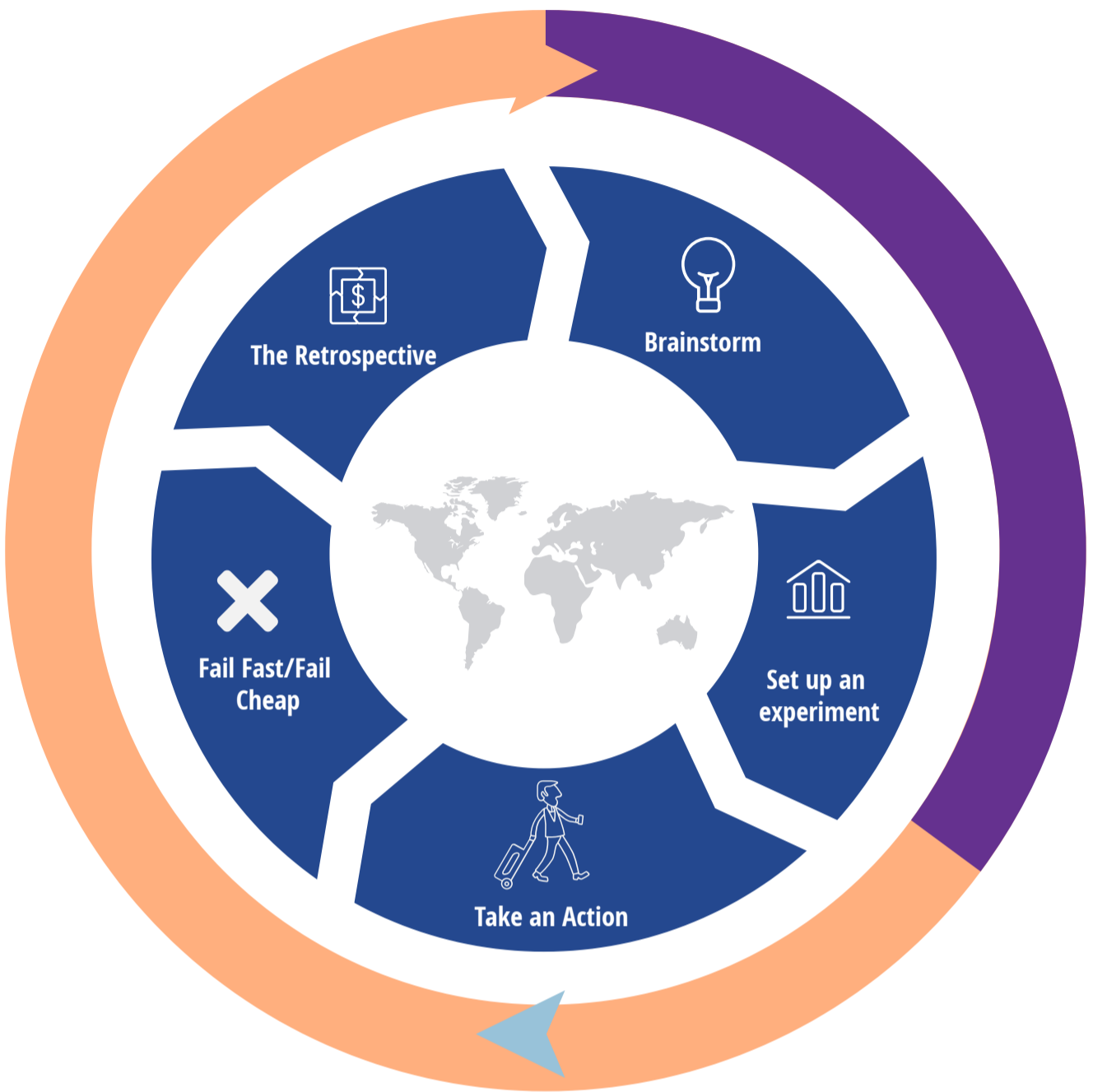


STAGE 2 INNOVATION MODEL

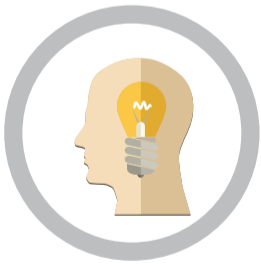
DISCOVERY



IMPLEMENTATION



We get it. Innovation is hard and sloppy. We've experienced it and can guide you through the process.



Start with an idea, any idea. You are going to iterate and iterate along the way.



Set up small experiments. The mantra you need is fail fast/fail cheap



The retrospective is the magic sauce. You get to correct, learn and iterate.

To learn more
www.sustainablebusiness.co

CREATED BY
Josh Patrick/The Sustainable Business.

