

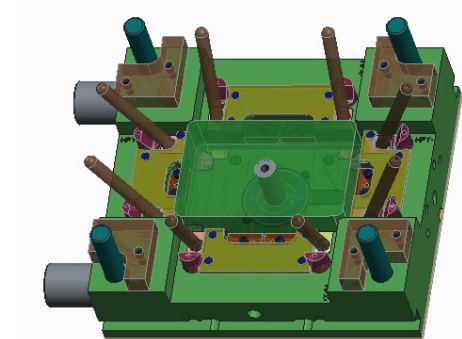
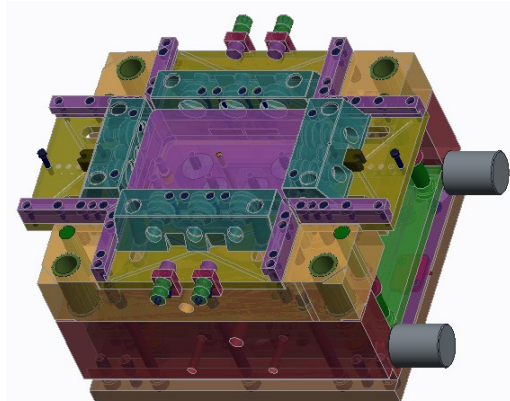
Master Mold Frames & Unit Molds

For Plastic Injection Molded Parts

Master Mold Frames

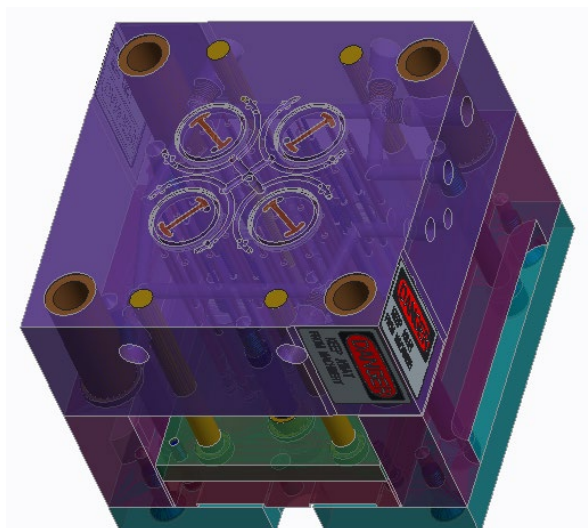
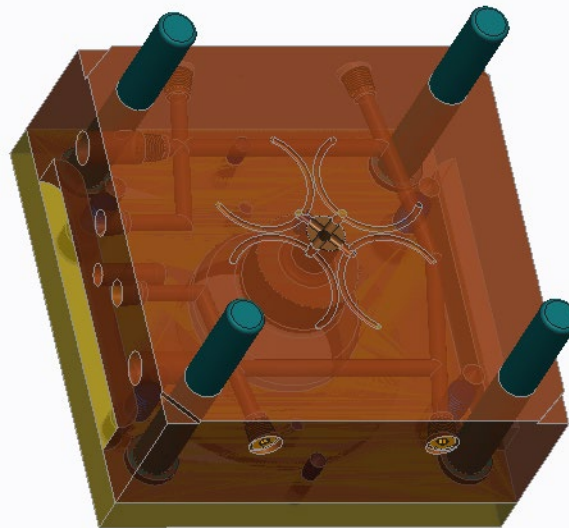
Master mold frames are molds that have interchangeable inserts, which allow for quicker and less expensive mold designs. They can be used where a “stand alone” mold base is not required, and where design time and cost is the primary focus.

For the convenience of our customers, Crescent Industries utilizes a line of master mold frames.

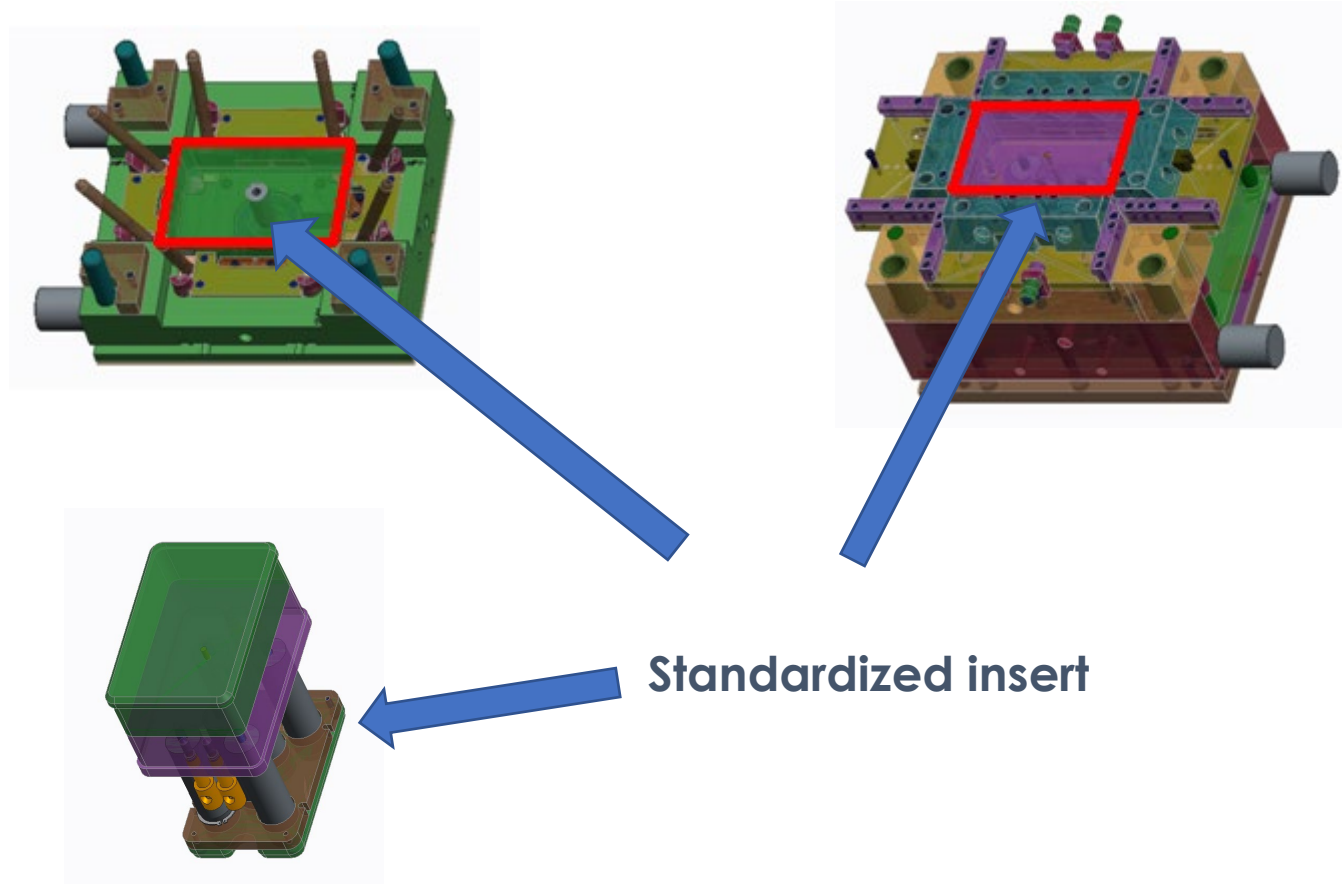


Example of a “stand alone” mold base

A standard, or “stand alone” mold base is one where the part geometry is machined either directly into the mold plates, or into inserts specific only to that mold. In addition to the part, runner and gate geometry, all the mechanical elements of the mold (such as leader pins and bushings, ejector system, sprue bushing, support pillars, etc.) need to be designed, machined and installed for each new mold.

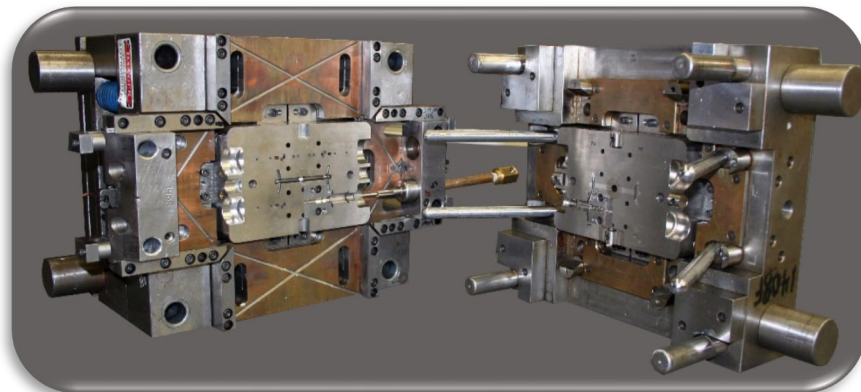


Example of a master mold frame



In a master mold frame, part, runner and gate geometry are cut into standardized inserts that fit into the frame.

Mechanical elements of the mold, such as leader pins, bushings, sprue bushing, support pillars, side actions and the ejector system are part of the master mold frame, and do not need to be re-machined for each new set of inserts.

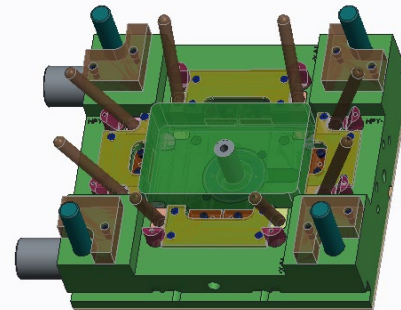
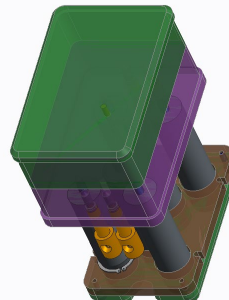
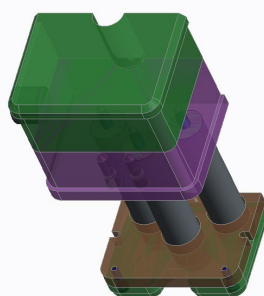
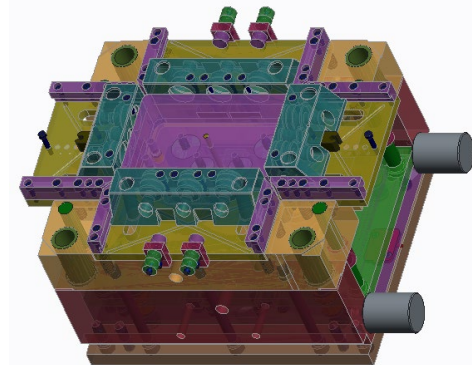


Advantages of using a master mold frame:

- **Cost:** Because only inserts need to be designed and machined rather than an entire mold base, material, labor and design costs are significantly lowered.
- **Lead-time:** The majority of the mold base components and features are in the master frame, and do not need to be machined for each new mold. Also, the lead-time for other vendors, such as mold base suppliers, is eliminated. With this approach, crescent can respond to the customer's needs quickly.
- **Flexibility:** Some of our master action frames have advanced capabilities already designed in, such as side actions with adjustable travel, and the components necessary to run either a cold or hot runner system.

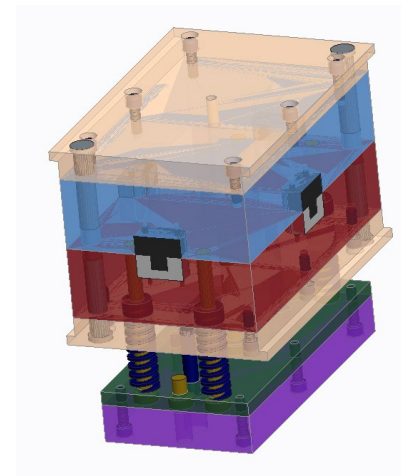
The Master Action Mold Frame

- Designed and built by Crescent Industries.
- Versatile design, allowing a wide array of part designs and mold functionality.
- Four separate mold frames available.
- Four adjustable, spring loaded side actions per frame.
- Ability to run cold sprue or hot drop.
- Insert sizes available:
 - 5-1/4 x 4
 - 8 x 5-1/4
 - 10-1/2 x 8



The MUD Mold Insert

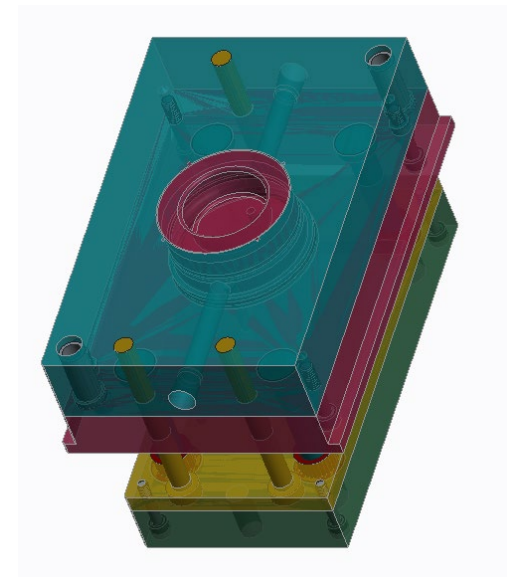
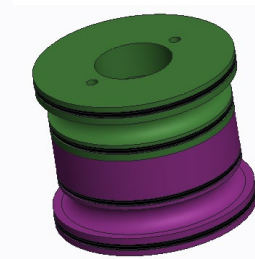
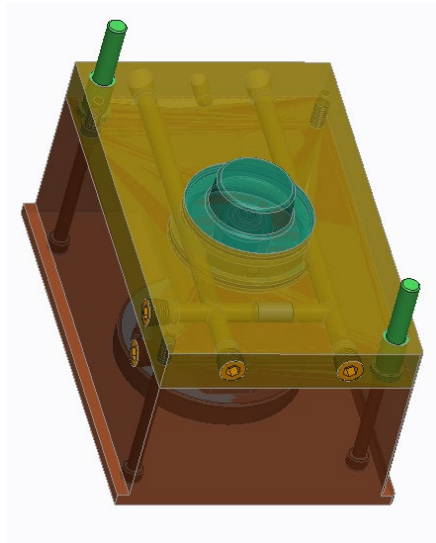
- The mold frames that hold these inserts are widely used and standardized.
- Stocked inserts can be purchased and delivered usually in one day.
- Inserts can contain more advanced mold features, such as side actions, strippers and lifters.
- Sizes:
 - 3-1/2 x 5
 - 5 x 8
 - 8 x 9
 - 7 x 11
 - 10x11



The Master MUD Mold Insert

Version #1: Single cavity

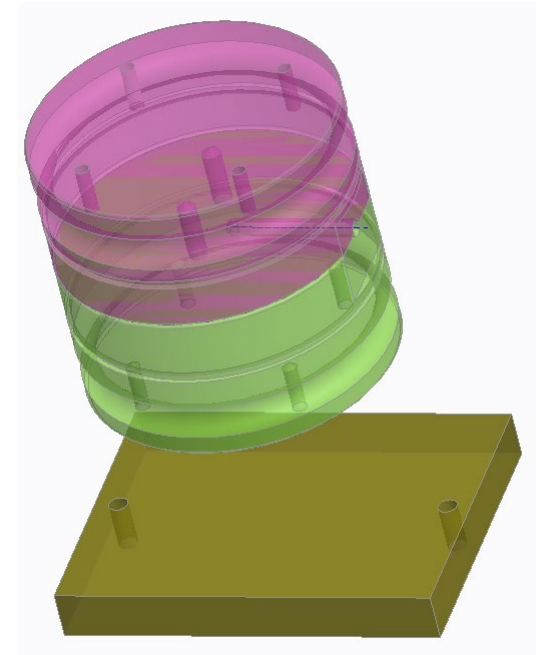
- This is a MUD insert that is pocketed to receive 2-1/2 diameter inserts.
- Designed to run a hot drop.



The Master MUD Mold Insert

Version #2: Two cavity

- This is a MUD insert that is pocketed to receive two 3-1/4 diameter inserts.
- Designed as a cold runner.



Master Mold Frames & Unit Molds for
Plastic Injection Molded Parts



With cost and lead-time being an ever-present issue for its customers, [Crescent Industries](http://www.crescentind.com) has responded with its line of master mold frames and inserts.

Our representatives and engineers are ready to help you determine if this is the right fit for your plastics needs.

CONTACT US!

www.crescentind.com
Phone: 717-235-3844